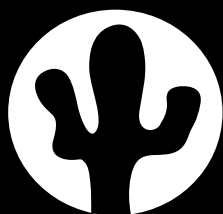


Now Supplying
CHANDLERY



Cactus

Strong on Price & Advice

MARINE ELECTRONICS & ELECTRICAL EQUIPMENT

2016 BUYERS GUIDE

ALL THE NEWLY RELEASED PRODUCTS FROM THE TOP BRANDS



RAYMARINE
ES SERIES



ICOM
IC-M25E



OCEAN SIGNAL
EDF1



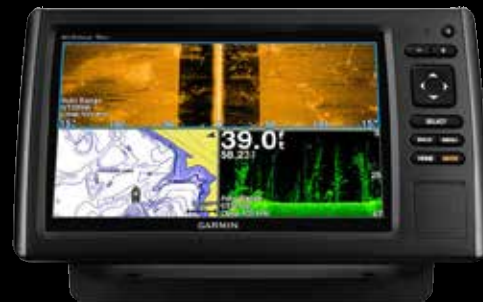
VESPER MARINE
XB6000



FURUNO
NAVNET TZ-TOUCH



HYUNDAI
GENERATORS



GARMIN
ECHOMAP 95SV

100'S OF TOP PRODUCTS INSIDE

Get all the Latest Prices & Order Securely Online www.cactusnav.com

Competitive Prices • Fast Delivery • Reliant Advice • Friendly Knowledgeable Team

CONTENT

Garmin.....	3
Furuno.....	10
Raymarine.....	12
Simrad.....	14
B&G.....	16
Lowrance.....	18
McMurdo.....	20
Vesper Marine.....	21
Ocean Signal.....	22
Spot.....	23
Sterling.....	24
Navionics.....	25
C-Map.....	28
Generators.....	29
Digital Yacht.....	30
NASA.....	36
Victron.....	37
Merlin.....	38
MasterVolt.....	39
Icom.....	40
Shakespeare.....	42
Standard Horizon.....	44
Fusion.....	46
Thrane & Thrane.....	47
Inmarsat.....	47
Iridium.....	47
Scanstrut.....	48
Chandlery.....	50

PRODUCT COLOUR KEY:

Communications, Satcom
and Sat TV

Navigation, Autopilots
and Instrumentation

Sonar, Echo-sounders and
Fish-finders

Electronic Cartography

Power Generators

Chandlery

© 2014 Cactus 020 Ltd. The information in this catalogue is correct at the time of going to press, using manufacturers' specifications. However products are constantly updated, hence Cactus 020 can accept no responsibility for any errors in the description of any of the products featured in this catalogue.

Dear boat owner,

Thanks for picking up our brochure and giving Cactus the chance to supply your next item of navigation and communication equipment. In an Increasingly competitive market, we know that to stay on top we have to give our customers a great service and a unique offering.

Who we are.

Cactus 020 is a privately owned business operating with an office and warehouses In the UK. I started the business after many years In the marine industry, first as an electronics Installation engineer and later as a sales and marketing manager for one of the manufacturers, working in the UK and overseas. Before I started Cactus, marina electronics were either sold from mail order chandlers who sold at low prices but lacked the specialist knowledge, or the local technical dealers who had the knowledge but tended to be expensive. My idea was to offer both good technical expertise and low prices.

We guarantee not to be beaten on price.

Our price promise guarantees you the best price, even in the event you have seen a price cheaper elsewhere. We try to keep our promise as simple as possible and not have lots of exceptions or caveats, so in a nutshell we will always match or better a price providing the product is from an official source, like for like and it's not a discontinued product or promotion we can no longer source.

We are a real business.

We are a bricks and mortar business with premises and a warehouse full of stock. Next time you are looking at online retailers look carefully at their address (if they put it on their site, many don't) thanks to Google Maps, you can even take a look at their premises You will see many of the retailers on the net are just one man bands working from home. But why does that matter? Well without premises they can't hold decent levels of stock - In fact most of these companies don't hold stock, and instead they source from distributors who ship the goods for on their behalf. Many have no idea what they are selling and most importantly have no Infrastructure in place to deal with returning goods or service work.

Free Installation Advice.

Unlike many web retailers our sales team are marine engineers, so as well as being able to guide you through all the options they can talk intelligently about all aspects of the Installation. They can tell you the kit and tools you need, positioning antennas and display even how best to run cables. Our advice makes sure you get the right kit and you get the most out of it. If you don't want to Install the equipment yourself, we offer a comprehensive Installation service.

We are there for you if you get a problem.

If you have a problem we don't hide behind email address or restrict the times you can call us. If something you have bought from us isn't working to your satisfaction, let us know and we will get it sorted.

We've been in the business a long time.

We know the solutions and products that work and ones that don't. Over the years we have supplied equipment to tens of thousands of customers with boats ranging from day sailors to super yachts. Nearly all become repeat customers because they like our pricing, customer service and business approach. We like to build a rapport with our customers and get feedback on how their kit has performed; consequently we are able to give great advice.

We are a solid business, our growth & expansion has been consistent over the years

In an industry where businesses come and go all the time, our strong credit rating and healthy balance sheet, make us one of the safest places to buy from. Remember your product warranty is always with the retailer, so if you get a problem you need to feel safe that the company you bought from is still in business.

We are an authorised dealer for all the brands.

We are one of only a few internet retailers that is a dealer and service agent for all. The major brands. We are not tied to a few suppliers which mean we can offer genuine unbiased advice. Unlike many online stores, we are happy to talk you through a problem. I hope this gives you a brief explanation of why I believe you should buy from us. I also hope that we offer in our catalogue and website is of interest. If you have any questions or queries I would be more than happy to answer them directly through my email address at andrew@cactusnav.com.

Happy Boating,

Andrew Smythe

Cactus 020 Managing Director

www.cactusnav.com

EchoMap™ Chirp 45dv & 55dv - DownVu™

It's time you started fishing with the power of CHIRP sonar. The new easy-to-install, easy-to-use echoMAP CHIRP is compatible with optional transducers for high wide CHIRP sonar and Garmin CHIRP DownVu, the clearest scanning sonar on the water. It Includes Quickdraw Contours software to instantly create your very own HD maps with 30 centimetre contours as you fish. Internal 5 Hz GPS updates position and heading 5 times per second.

45dv



KEY FEATURES

- 4.3 inch display
- Preloaded BlueChart g2 maps for UK, Ireland and North West mainland Europe coast
- Includes Quickdraw Contours custom HD map creation software
- Internal 5 Hz GPS updates position and heading 5 times per second

55dv



KEY FEATURES

- 5 inch display (with GT20-TM transducer)
- Preloaded BlueChart g2 maps for UK, Ireland and North West mainland Europe coast
- Includes Quickdraw Contours custom HD map creation software
- Internal 5 Hz GPS updates position and heading 5 times per second

EchoMap™ Chirp 75sv & 95sv - Plotter/Sounder DownVu™ & SideVu™

It's time you started fishing with the power of CHIRP sonar. The easy-to-install, easy-to-use 7" echoMAP CHIRP 75sv is compatible with optional transducers for high wide CHIRP sonar and Garmin CHIRP DownVu, the clearest scanning sonar on the water. It supports Panoptix sonar and includes preloaded Quickdraw Contours software to instantly create your own HD maps with 30 centimetre contours as you fish. Internal 5 Hz GPS updates position and heading 5 times per second. It provides NMEA 2000® support for engine data, sensors, autopilots and more. Cords plug directly into the mount, allowing you to quickly install and remove your device from power and mount. Transom and trolling motor mounts included.

The Garmin CHIRP Difference

The built-in sonar capabilities of echoMAP 75sv include CHIRP sonar, the most sophisticated sonar technology available for the fishing and boating public. CHIRP sonar provides amazingly clear target separation and definition because it puts even more energy onto the target than traditional sonar. It also includes sonar-recording capability that coordinates the timing of the sonar return with your boat's position and saves digital information for playback on a computer using HomePort™ planning software. Use the user data sharing cable to share waypoints and routes between multiple devices. provides NMEA 2000® support for engine data, sensors, autopilots and more. Cords plug directly into the mount, allowing you to quickly install and remove your device from power and mount. Transom and trolling motor mounts included.

75sv



KEY FEATURES

- Displays DownVu & SideVu when connected to corresponding transducer
- 7-inch colour display with keypad control
- Panoptix™ all-seeing sonar support (transducer not included)
- Preloaded BlueChart g2 maps for UK, Ireland and North West mainland Europe coast
- Preloaded Quickdraw Contours custom HD map creation software
- Display engine data from compatible engines using NMEA 2000 interface



95sv



KEY FEATURES

- Displays DownVu & SideVu when connected to corresponding transducer
- 9-inch color display with keypad control
- Includes GT52-TM transducer with high wide CHIRP, 250 W and Garmin CHIRP DownVu™/SideVu™, 455/800, 500 W transducer
- Panoptix™ all-seeing sonar support (transducer not included)
- Preloaded Canada LakeVu HD maps cover more than 13,500 lakes, of which more than 1,600 are HD lakes with 1-foot contours shore to shore
- Includes Quickdraw Contours custom HD map creation software



GPSMAP 820, 820xs, 1020 & 1020xs Series - 8in & 10in Multifunction Displays

The colour 8" and 10" GPSMAP 800 and GPSMAP 1000 series include keyed chartplotters plus chartplotter/sonar combos for cruising, sailing or fishing. The chart plotter/sonar combo units have built-in Garmin 1kW sonar, CHIRP, and DownVü.i™ scanning sonar with CHIRP technology for a nearly photographic view of fish and structure under the boat (xs versions only). Add a compatible CHIRP transducer (sold separately) for crystal-clear sonar images, remarkable target separation and resolution at extraordinary depths - and you can dial into specific frequencies to target certain species of sport fish (xs versions only).

Wirelessly connect to Apple mobile devices for BlueChart Mobile - Plan and view routes on your iPad, iPhone or iPod then wirelessly transfer them to your networked Garmin chartplotter.

KEY FEATURES

- **GPSMAP 820** - 8" SVGA chartplotter
- **GPSMAP 820xs** - 8" SVGA combination chartplotter/sonar
- **GPSMAP 1020** - 10" SVGA chartplotter
- **GPSMAP 1020xs** - 10" SVGA combination chartplotter/sonar
- Select networking capabilities - share features with other compatible GPSMAP units such as radar, GCV 10 DownVü and SideVü sonar, supplemental maps and user data such as way-points, routes, and tracks
- Optional maps can be shared with multiple networked Garmin displays on the boat
- Supported sailing features include laylines, enhanced wind rose, heading and course over ground lines, and true wind data fields
- Garmin Helm support for chartplotter view and control capability via iPhone or iPad
- Add any Garmin marine GMR series radar for enhanced situational awareness
- Optional 50/200kHz transducers to optimise performance in salt water
- Transmit power: 1kW RMS, 8,000W Peak to Peak (xs versions)
- CHIRP: 600W RMS, 4800W Peak to Peak (xs versions)
- 10Hz GPS - (GPS/GLONASS) provides position and heading updates 10 times per second
- Compatible with BlueChart® g2, BlueChart® g2 Vision® and LakeVü HD Ultra maps (sold separately)
- NMEA 2000® support for autopilot capability and engine data
- Sonar recording and playback using HomePort™ marine planning software (sold separately)
- Two SDTM data card slots for gigabytes of storage



GPSMAP 7400 Series - Touch-screen Displays

Designed for powerboat users, sailors and racing sailors who demand high performance, ease of operation and feature integration, the GPSMAP 7400 series displays with multi-touch wide-screen display have a 10 Hz internal GPS that updates position and heading 10 times per second. The MFD's are fully network capable, including the Garmin Network and NMEA 2000, and offers the conveniences of built-in Wi-Fi® connectivity.

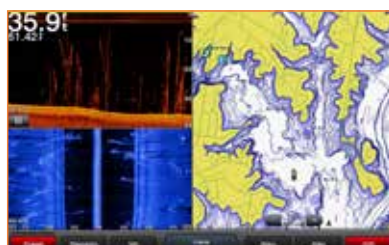
Supported sailing features include laylines, enhanced wind rose, heading and course-over-ground lines, true wind data fields and tide/current/time slider. Gauge displays are designed to provide important need-to-know information at a glance, including true and apparent wind angle, set and drift, true or apparent wind speed, horizontal or vertical graphs, and a data bar with customisable data fields.

KEY FEATURES

- GPSMAP 7407 - 7in 800x480 pixel WVGA
- GPSMAP 7408 - 8in 1024x600 pixel WSVGA
- GPSMAP 7410 - 10in 1280x800 pixel WXGA
- GPSMAP 7412 - 12in 1280x800 pixel WXGA
- GPSMAP 7416 - 16in 1366x768 pixel WXGA
- Multi-touch wide-screen display with worldwide basemap
- High-sensitivity internal 10 Hz GPS/GLONASS
- Fully network capable for Garmin Marine Network and NMEA 2000®, plus NMEA 0183 support
- Supports GSD™ premium sonar and GCV™ scanning sonar modules
- Advanced sailing and sail racing features



STARTLINE FEATURE



BUILT-IN SONAR

With DownVü™ and SideVü™ IXSU Models.



NEW HOMEPAGE

Newly designed, user-friendly homepage.

GHP Reactor - Autopilot

Garmin brings an advanced marine technology once only available to commercial boats to the boating public in a complete package designed for powerboats and sailboats. The GHP Reactor autopilot series is simply the most responsive autopilot system we have ever offered. Both powerboat and sailing features are available in all core packs, including heading hold, wind hold, tack/jibe, step turns and more.

MODELS AVAILABLE

- **010-00705-15** GHP Reactor, Hydraulic Corepack
- **010-00705-65** GHP Reactor, Hydraulic w/Smartpump Corepack
- **010-00705-45** GHP Reactor, Mechanical Solenoid Retrofit Corepack
- **010-00705-80** GHP Reactor SBW Standard Corepack
- **010-00705-81** GHP Reactor SBW Yamaha Corepack
- **010-00705-85** GHP Reactor SBW Volvo Penta Corepack



GMI 20, GNX 21 & GNX 20 - Digital Marine Instrument Display

The GMI 20 digital marine instrument display is perfectly designed for both power and sail vessels. Designed to clearly show depth, speed, wind and 100+ marine and vessel parameters, its large, bright 4" colour display with extra-large digits is easy to read at a distance and has a 170 degree viewing angle. The easy-to-read GNX 20 marine instrument display with black digits on a white or colour background clearly shows depth, speed, wind and 50-plus marine and boat parameters. Its glass-bonded display with anti-glare lens coating provides excellent daytime and night time readability with high-contrast digits scalable up to 36 mm. The GNX 21 marine instrument has an inverted display with white or colour digits on a black background.

gWind™ Wireless Transducer Bundles

- An easy-to-install solution that eliminates running internal cables through a mast
- Includes a WSI connection box that receives dedicated radio signals and a GND™ 10 black box bridge that allows shared communication of critical NMEA 2000® data
- Three-bladed propeller for more accurate True Wind Speed (TWS) in lighter air
- Twin-fin design gives a more stable True Wind Angle (TWA)
- Available as 2 bundles; one with a GNX 20 and one without this marine instrument display



KEY FEATURES - GMI 20

- Large, bright 4" colour glass-bonded lens display with anti-glare finish
- Enhanced night time readability with back-light dimmer and full colour or new red/black or green/black colour schemes
- Low profile flush mount or custom flat mount option

KEY FEATURES - GNX 20 & 21

- Glass-bonded display with anti-glare lens avoids fogging
- -Fully customisable user profiles for sail or power boating to display most important marine and vessel data
- -Low power consumption (25 mA) with 350 mW (no back-light)/400 mW (mid-level back-light)



gWind Sensor



GFS 10 Fuel Sensor

VHF 100i & 200i - Fixed DSC VHF Radio

Now also available in black. With a large backlit 3.2in display, Class D DSC functionality, rotary volume, squelch and channel selection knobs. The VHF 200i also offers two-way hailer plus automatic and manual foghorn signals if connected to a compatible horn speaker and NMEA 2000 compatibility.

KEY FEATURES

- Position tracking: locate and monitor up to three other boats
- LOCAL receiver mode improves performance in busy port environments
- Ergonomic fist mic with built-in speaker
- Programmable international channels
- ATIS and private channel customisation
- 200i - Supports GHS 10i second station
- Waterproof to IPX7 standard
- Easy front flush-mounting option
- NMEA 0183 compatible
- Automatic power-on when boat starts



GPSMAP 751/751xs - 7in Colour

With a crisp 7in sunlight-viewable capacitive multi-touch WVGA colour display, both models have a built-in, high-sensitivity 10Hz GPS/GLONASS receiver that updates your position and heading 10 times per second. Features wireless communication via Wi-Fi and Blue-tooth, with the option to connect engine, fuel, VHF and autopilot via NMEA 2000, as well as radar. The GPSMAP 751xs also has a powerful digital sounder incorporating Spread Spectrum CHIRP technology, with the potential for an output power of 1kW RMS at depths down to 600 m (1kW for traditional sonar with HD-IDTM technology and feature 600W CHIRP sonar).

KEY FEATURES

- Fast processor for rapid zooming, panning and updating of the image.
- Robust and waterproof (IPX7)
- Preloaded with UK & Ireland charts
- Video input
- Fusion media integration - control your Fusion stereo



SOUNDER FEATURES (751xs)

- Spectrum CHIRP sonar capability
- Depth: 600 metres (with dual freq., 1kW transducer)
- Advanced target searching with CHIRP technology
- Up to 1,000 watts (RMS), 8,000 watts (peak to peak), with 1kW transducer
- Supports dual frequency mode (50/200kHz) or dual beam mode (77/200kHz)
- Built in highly acclaimed HD-IDTM sonar technology which also includes built-in Spread

GPSMap 751 & GMR 18 - Radar Bundle

KEY FEATURES

- **GPSMAP 751** Fast processor for rapid zooming, panning and updating of the image.
- Robust and waterproof (IPX7)
- **GMR 18** New Dynamic Auto Gain and Dynamic Sea Filter continually adjust to your surroundings to provide optimal performance in varying conditions
- 48 RPM and 24 RPM speed options with auto adjustment based on range
- Maximum range of 48 nautical miles



AIS300 - Black Box AIS Receiver

This affordable NMEA2000 compatible black box AIS receiver alerts you to potential collisions with other AIS-equipped vessels in your vicinity. It integrates with a Garmin chartplotter and VHF radio to enable automatic AIS target calling and to display AIS target data directly on the chartplotter screen.



KEY FEATURES

- Class A and Class B reception
- Closest Point of Approach (CPA) alarm
- 12-volt and 24-volt boat systems
- NMEA 0183 output with selectable speed
- Inbuilt passive splitter enables one VHF antenna to serve both the AIS 300 and any VHF radio

SUPPLIED WITH

Power/data cable, 2m NMEA2000 cable, NMEA2000 T-connector, VHF interconnect cable, mounting kit

AIS600 - Black Box AIS Receiver

Receive and transmit AIS data. Inbuilt active splitter allows one VHF antenna to serve both the AIS 600 and VHF radio with minimal signal loss. The AIS 600 connects to your existing Garmin marine network and is controlled via the chartplotter, so all the information you need will be right at your fingertips.



KEY FEATURES

- ClearTrack™ technology ensures no interruption of AIS traffic position while the VHF radio is in use
- Integrates with chartplotters & VHF via NMEA2000
- Call With Radio function - initiate a call to any
- MMSI target directly from the chartplotter

SUPPLIED WITH

GPS antenna, pole & surface mount, power cable, SRM cable, 2m NMEA2000 cable, NMEA2000 T-connector, USB cable, 2m VHF interconnect cable, PC/Software CD, mounting kit.

xHD2 Digital Radar

Garmin xHD next-generation digital radar offers high resolution imagery and advanced features. Dynamic Auto Gain and Sea Filter continually adjusts to your surroundings providing optional performance in varying conditions. Data is transmitted over the Network to any Garmin MFD.



KEY FEATURES

- High-definition radar with open array antenna
- High sensitivity for consistent target positions, excellent target separation and reliable operation
- Dual range radar with dual radar support
- No complex user settings; easy to install and start using
- Quiet rotation and reliable operation
- High-definition radar with open array antenna

GMR xHD Series - Radomes

The GMR are the next-generation, 4kW high-definition dome radars from Garmin. They offer features similar to the xHD series of open array radars that make them very easy to use and they offer higher resolution than our previous generation dome radars.



KEY FEATURES

- 18" and 24" dome radars
- Unique styling, improved robustness, quieter operation, and better antenna performance
- No complex user settings, easy to install and start using
- New Dynamic Auto Gain and Dynamic Sea Filter continually adjust to your surroundings to provide optimal performance in varying conditions
- 48 RPM and 24 RPM speed options with auto adjustment based on range
- Maximum range of 48 nautical miles

GC10 - Marine Camera

Durable and waterproof with a small unobtrusive design.

KEY FEATURES

- Can be used with on-board TV
- Video monitors or chartplotters with video input
- No need to add separate hardware to view feed
- Standard-image and reverse-image models
- Automatic infra-red functionality



STRIKER™ Series - Fishfinder / GPS Combo

Finding fish is easier than ever with the new STRIKER Series fishfinders. Mark and return to your hot spots, boat ramps and docks, and share your favorite waypoints and routes with other STRIKER and echoMAP™ combos. Smooth Scaling™ graphics provide uninterrupted imagery when switching between depth-range scales. Sonar history rewind allows you to scroll back through sonar images to mark waypoints you originally may have missed. Plus, it has a built-in flasher and displays speed data. Includes tilt/swivel mount, CHIRP (77/200 kHz) transducer with transom and trolling motor mounting hardware and cable. For high-performance CHIRP, purchase a GT8 or GT15 transducer (each sold separately).

STRIKER™ 4 & 4dv



KEY FEATURES

- **4 & 4dv** - Easy-to-use 3.5-inch color fishfinder with built-in, high-sensitivity GPS
- Find fish; mark and return to hot spots, docks and ramps
- Convenient keypad operation
- **4 only** Includes CHIRP (77/200 kHz) sonar transducer; transmit power (200 W RMS)/(1,600 W peak-to-peak)
- **4dv only** - Garmin CHIRP DownVü™ scanning sonar
- Includes Garmin GT20 transducer with CHIRP (77/200 kHz); transmit power (300 W RMS)/(2,400 peak-to-peak) with 455/800 kHz CHIRP DownVü (300 W power)

STRIKER™ 5dv



KEY FEATURES

- Easy-to-use 5-inch color fishfinder with built-in, high-sensitivity GPS and Garmin CHIRP DownVü™ scanning sonar
- Find fish; mark and return to hot spots, docks and ramps
- Includes Garmin GT20 transducer with CHIRP (77/200 kHz); transmit power (500 W RMS)/(2,400 peak-to-peak) with 455/800 kHz CHIRP DownVü (300 W power)
- Upgrade to high-performance CHIRP with a GT22 or GT23 transducer (each sold separately)
- Share waypoints and routes with other STRIKER or echoMAP™ chartplotter combos

STRIKER™ 7dv & 7sv



KEY FEATURES

- **7dv & 7sv** - Easy-to-use 7-inch color fishfinder
- Mark and return to hot spots, docks and ramps
- Share waypoints and routes with other STRIKER or echoMAP™ chartplotter combos
- **7dv only** - Inc. GT20 transducer with CHIRP (77/200 kHz); transmit power (300 W RMS)/(2,400 peak-to-peak) with 455/800 kHz CHIRP DownVü (300 W power)
- built-in, high-sensitivity GPS and CHIRP DownVü™ scanning sonar
- **7sv only** - High-sensitivity GPS & CHIRP sonar, inc. CHIRP DownVü™ & CHIRP SideVü™ scanning sonars
- Includes GT52 transducer with high wide CHIRP 250 W, 455/800 kHz CHIRP DownVü and CHIRP SideVü with 500 W power
- Smooth Scaling™ software technology for depth range adjustments

GSD 24 - CHIRP Sonar Mod

The GSD 24 features a vastly improved digital sonar design for superior target definition and deep-water performance. With up to 2,000 Watts of transmit power and a high-dynamic range receiver, the GSD 24 brings high-definition imaging to your compatible Garmin chart plotter. The system is dual frequency (50/200 kHz) capable and offers selectable transmit power (600 W, 1 kW and 2 kW, depending on transducer) for pin-point accuracy at depths of up to 5,000 ft (1,500 m). So whether you're out sport fishing or just keeping an eye on hazardous terrain and reef structures beneath your boat, you'll see a clearer picture with enhanced separation of images and deeper bottom detection.



GSD25 - CHIRP Sonar Mod

The GSD 25 sonar module provides outstanding fishfinding and bottom tracking capabilities. It offers dual-channel 1 kW CHIRP, plus Garmin CHIRP DownVü and SideVü sonar scanning for the clearest scanning images on the water. The images sent to your compatible Garmin chartplotter.



GSD 26 - CHIRP Sonar Mod

The GSD 26 digital sonar ushers in the next evolution of sportfishing technology, providing unrivalled target separation at far greater depths than traditional sonar. Discover Spread Spectrum Clarity For serious deep-sea sportfishing, the GSD 26 takes high-definition targeting to a whole new level. With a compatible transducer, the GSD 26's Spread Spectrum technology scans on multiple frequencies at one time, returning vast amounts of data to the receiver. As a result, you can expect precise, shallow-water-like target separation at much greater depths - up to 10,000 ft (3,000 m). A traditional fixed frequency mode allows you to manually adjust frequencies from 25 kHz to 210 kHz for enhanced targeting of specific fish species.



BLUECHART - g2 & g2 Vision

REGULAR COVERAGE MAP



Features Comparison	G2	G2V
Seamless chart presentation	✓	✓
Vector object orientated data	✓	✓
Shaded depth contours & inter-tidal zones with spot soundings	✓	✓
Port plans	✓	✓
Tidal stations for selected countries	✓	✓
Aids to navigation including ranges and light sectors information	✓	✓
Wrecks, restricted areas, anchorages, obstructions	✓	✓
Tidal current graphs	✓	✓
2D or 3D map perspective view	✓	✓
PMarina points of interest and slipways	✓	✓
Full Barometric Fishing charts providing detailed contours	✓	✓
Auto Guidance technology to suggest best passages		✓
Tidal current flow overlay		✓
Aerial photos of ports, marinas, bridges & navigational landmarks		✓
Detailed coastal roads up to five miles inland (non-routable)		✓
POIs such as restaurants, lodging, entertainment and more		✓
Realistic "view from space" high-resolution satellite imagery		✓
True 3D view "MarinerEye 3-D" above-waterline imagery		✓
FishEye 3-D view below-waterline imagery		✓

SMALL COVERAGE MAP



LARGE COVERAGE MAP



EXTRA LARGE COVERAGE MAP



BlueChart g2 Vision

Enhance your navigational experience with BlueChart g2 Vision high-precision charting, including our exclusive Auto Guidance technology, helping to find the best course for you. Garmin's most detailed digital marine data contains premium mapping features including high-resolution satellite imagery, 3D perspectives above and below the waterline, AutoGuidance technology, aerial photography of ports, harbours, marinas and waterways and coastal roads with points of interest.

KEY FEATURES

- AutoGuidance technology finds the best course for navigation
- High-resolution satellite imagery
- Aerial reference photography for "real world" views of ports, harbours, marinas,
- Mariner's Eye View provides 3D perspective of chart information above the waterline for a quick, reliable and easy position fix
- FishEye View gives 3D perspective below the waterline, displaying bottom contours based on bathymetric charting data
- Tidal graphs, current arrows, marine services, coastal roads and points of interest detail
- Land-based information including detailed coastal roads up to five miles inland (non-routable) and business points of interest



Auto Guidance

Just chose your destination and Auto Guidance technology will calculate a safe path for you.



Mariner's Eye 3D

High definition 3D graphics bring land and bottom contours to life.

eTREX 10 - Hand-held GPS

The eTrex 10 retains the core functionality, rugged construction, affordability and long battery life that made eTrex the most dependable GPS available. Garmin have improved the user interface and added a worldwide base-map, paperless geocaching and added support for spine mounting accessories. Durable and waterproof, eTrex 10 features the legendary toughness that's built to withstand the elements - whether it's dust, dirt, humidity or water, none of which are a match for this legendary navigator.

KEY FEATURES

- High-sensitivity, WAAS-enabled GPS receiver
- HotFix® satellite prediction with
- GPS and GLONASS
- Easy to read enhanced 2.2in mono display
- Paperless geocaching
- Waterproof standard: IEC 60529 IPX7
- USB interface
- Measures just 5.3 x 10.1 x 3.3cm, weighs 142g
- Up to 25 hours of battery life, 2 x AA
- Supplied with USB cable



MONTANA 610 BUNDLE - Hand-held GPS

Montana 610 features a bold, color touchscreen, dual-orientation display and includes a 1-year BirdsEye Satellite Imagery subscription. It also supports multiple mapping options like BlueChart® g2 and TOPO U.S. 24K. Handheld includes 3-axis tilt-compensated compass, barometric altimeter and access to both GPS and GLONASS satellites for improved positioning and typically faster fixes.

Montana 610 features a 4-inch, sunlight-readable touchscreen display that offers crystal clear, enhanced colors and high-resolution images. Its easy-to-use interface means you'll spend more time enjoying the outdoors and less time searching for information.

KEY FEATURES

- 4-inch dual-orientation, glove-friendly touchscreen display
- Tracks both GPS and GLONASS satellites
- 1-year BirdsEye Satellite Imagery subscription
- 3-axis compass with barometric altimeter



GPS73H - Hand-held GPS

This easy-to-use handheld is the perfect navigational solution for boats, sailboats or small watercraft that do not have a chartplotter. It's also ideal as an important emergency navigation backup for all vessels. Its high-sensitivity GPS marks and stores 1,000 waypoints and 100 tracks so you can navigate right back to them. Use on land or water — it floats! Features SailAssist, including virtual starting line, heading line, countdown timers and tack assist.

KEY FEATURES

- High-sensitivity GPS marks and stores 1,000 waypoints and 100 tracks
- Marks your favorite locations to easily navigate back to them
- Garmin SailAssist™ for GPS 73 includes virtual starting line, heading line, countdown timers and tack assist
- Sunrise/sunset, estimated time of arrival, other calculations and marine data
- Built-in backlight



GPSMAP78 & 78S - Hand-held GPS

The GPSMAP 78 is a rugged unit with crisp colour mapping, high-sensitivity receiver, moulded rubber side grips plus a microSD card slot for loading additional maps - and it floats too! Supplied with an inbuilt worldwide basemap, you can easily add more maps from Garmin's range of detailed marine, topo graphic and road maps on microSD card. The card slot is inside the waterproof battery compartment, so you don't have to worry about getting it wet.

KEY FEATURES

- 2.6in transreflective 65-K colour TFT display
- High sensitivity GPS receiver
- 1.7Gb internal memory
- 2000 way-points, 200 routes, 200 tracks
- USB (high speed USB on GPSMAP78S) and NMEA0183 interface
- BirdsEye satellite imagery (subscription required)
- Compatible with Custom Maps - transform your own paper and electronic maps into downloadable maps"
- Automatic turn-by-turn routing (with optional road maps)
- 20hr battery life, uses 2 x AA batteries



VIRB® X - HD Action Camera

The VIRB X action camera shoots rich, high-definition, wide-angle footage at 1080p30, 12 megapixel photos at up to 10 frames per second, and captures more of your action.

KEY FEATURES

- Video: 1080p/30fps; 960p/30fps; 720p/60fps; 480p/120 with image stabilisation and zoom levels
- G-Metrix™: Built-in Garmin GPS and sensors track your movements in real-time and display it all in powerful gauges, graphs and more
- 12 megapixels; Burst up to 10 frames per second; Time lapse
- Audio: Exposed microphone for extremely clear audio even underwater; Wireless HD audio from Bluetooth®-enabled headsets or microphones
- Compact and Rugged: small, light and truly rugged water rated up to a depth of 50 meters with no need for an extra case



VIRB® XE - HD Action Camera

The VIRB XE action camera shoots rich, high-definition, wide-angle footage at 1080p60, 12 megapixel photos at up to 30 frames per second, and captures more of your action.

KEY FEATURES

- Video 1440p30, 1080p60, 960p100, 720p120 and 480p240 with image stabilisation and zoom levels
- G-Metrix™: Built-in Garmin GPS and sensors track your movements in real-time and display it all in powerful gauges, graphs and more
- 12 megapixels; Burst up to 30 frames per second; Time lapse
- Audio: Exposed microphone for extremely clear audio even underwater; Wireless HD audio from Bluetooth®-enabled headsets or microphones
- Water rated up to a depth of 50 meters with no need for an extra case

Quatix - GPS Marine Watch

Designed for avid mariners of all types, from yachtsmen and power boaters to dinghy racers and kayaks, quatix provides unrivalled performance and awareness in a rugged marine watch. Whether you're on-board on a high performance race boat or simply cruising along on a day sail, the Garmin Quatix GPS Marine Watch does it all. Garmin Quatix GPS Marine Watch is the only GPS-enabled device in existence to provide this incredible range of marine navigation features including automatic MOB detection¹, remote control of Garmin equipment, and the streaming of real time data such as wind and depth info to your watch.

KEY FEATURES

- High-sensitivity GPS-enabled marine watch with
- Altimeter, barometer and 3-axis compass
- Stream NMEA 2000 data
- Special sail racing features
- Garmin marine autopilot remote control capabilities
- Automatic MOB detection



FURUNO

NavNet TZtouch2 12.1 & 15.6 - 12.1" & 15.6" Multifunction Displays

NavNet TZtouch2, the world's first Multi Function Display with ActiveCaptain functionality*. Share the experience together with other boaters around the world, browse and discover new points of interest. With a community of 250,000 users, reliable and updated information on fuel prices, marinas and obstructions are all available at the tip of your fingers



KEY FEATURES

- ActiveCaptain - Points Of Interest, directly on your NavNet TZtouch2
- Built-in Fish Finder with RezBoost™ technology
- New Graphical User Interface
- Instrument Display & Customization
- NavNet Remote and NavNet Controller* apps for iOS and Android devices
- Built-in GPS antenna
- Designed to perfectly match the NavNet NAVpilot 711C and the FI-70 instrument on your helm
- Compact, waterproof remote control unit for easy operation



New Graphical Interface



Instrument Display & Customization



TZTouch9 & 14 - Displays

Building upon FURUNO's ground-breaking TimeZero architecture, NAVNet TZT displays can be used with Navionics, C-MAP and Raster charts, all presented in stunning 30 including satellite photography and depth shading overlays.



KEY FEATURES

- RotoKey control
- Black Box model with a range of multi touch monitors
- Integrate with Ultra High Definition Radars, Digital Fish Finders, GPS, AIS, Weather Stations, Cameras and fuel tank systems etc.
- View and control the displays using iPad and iPhone with the free
- NAVNet Viewer and NAVNet Remote app
- Wireless hotspot connectivity - download updates and real-time
- Weather data via the internet
- CAN bus, LAN, USB, OVI-D Video Output, 2 x NTSC/ PAL Video
- Input, Line Out and MIC In ports

NAVNet- Upgrade Modules

These optional upgrade modules enable you to add powerful features to your NAVNet 30 system to suit your exact needs.



KEY FEATURES

- DFF1 Digital Sounder Module
- FA30 AIS Receiver
- FA50 Class A & B AIS Transponder
- FAX30 Weather-fax & Navtex Receiver
- PG700 Integrated Heading Sensor
- SC30, SC50 & SC110 Satellite Compasses
- BBWX1 Sirius Satellite Weather Receiver (US only)

NAVNet UHD - Digital Radar



KEY FEATURES

- Compatible with NAVNet 30 and NAVNet TZT
- 30 Target Tracking (ARPA)
- Antenna rotation speed 24, 36 or 48rpm
- Enhanced auto tune, gain and anti-clutter controls
- 48rpm rotation for HSC and river applications
- Adaptive rotation speed according to pulse length
- Accurate radar overlay on both 20 and 30 charts

TECH INFO - Radar Scanners

When ordering your radar system you'll need to specify the antenna you require.

Part No.	Size	Power	Beam	Type	Range
DRS2D	18in	2.2kW	5°	RD	24nm
DRS4DL	19in	4kW	5°	UHD	36nm
DRS4D	24in	4kW	5.2°	RD	36nm
DRS4A	3.5ft	4kW	3.6°	OA	48nm
DRS6A	4ft	6kW	3.7°	OA	64nm
DRS12A	4ft/6ft	12kW	1.8°	OA	72nm
DRS25A	4ft/6ft	25kW	1.18°	OA	96nm

RD - Radome Antenna (enclosed)

OA - Open Array

DRS4W - Wireless Radar

The world's first wireless Radar that you can access directly from your iOS devices. The FURUNO DRS4W is the first radar antenna in the world that allows you to wirelessly access radar images on your iOS devices, combining ease of use with great flexibility.

After installing and setting up the application available from the Apple store for free, you can watch radar images directly on your iPad or iPhone. You are free to move around on your boat whilst still having complete information of your surroundings.



GP33 - 4.3" Colour GPS

Provides accurate and reliable position fixing and displays navigation data in a wide variety of numerical and graphical formats.

KEY FEATURES

- Store up to 10,000 marks/way-points, 100 routes and 3,000 track points
- 7 display modes inc 2 user customise
- NMEA0183 and NMEA 2000

SUPPLIED WITH

12 channel SdGPS antenna



RD33 - 4.3" Colour Data Display

Matching colour 4.3" Multifunction data display

NX300D - Dual Mode Navtex Receiver

Provides accurate and reliable position fixing and displays navigation data in a wide variety of numerical and graphical formats.

KEY FEATURES

- Dual frequency (518/490kHz)
- Printout available via PC
- Can be used as a Nav data repeater
- Low power consumption



M1623 - 6" LCD Radar

BEST SELLER! A great value high contrast, low power consumption LCD radar which gives detailed images of coastline and targets at short ranges thanks to narrow pulse lengths and dual IF bandwidths.

In Watchman mode, the antenna is stopped, the screen displaying nav data only. The radar wakes up at a specified time interval and operates for 1 minute. If a target enters the guard zone, an alarm sounds and the radar goes into its normal operating mode.

KEY FEATURES

- 15" 2.2kW radome, max range 16nm
- Excellent screen clarity, day and night modes
- 12 range scales
- EBL, VRM, TLL output (Target Lat/Long), Cursor Lat/Long input/output, Echo Trail, Guard Zone Alarm
- Interface with GPS and chart plotter
- Way-points displayed as "lollipop" marks
- Automatic receiver tuning, sensitivity and anti-clutter controls



GP1870 - GPS C-Map 4D Chartplotters

Compact, powerful chartplotters with internal GPS for recreational and fishery boats which provide the user with powerful, fast performance and intelligent features. The bright LCD display gives excellent readability even in direct sunlight.



KEY FEATURES

- Bonded LCD to ensure a crystal clear display in all conditions
- Clear visibility even when wearing polarised sunglasses
- Split screen display - dual range 2D chart, 3D chart, nav data display
- Satellite photo overlay function
- Supports detailed C-MAP 40 charts (locally supplied with an SO card)
- RotoKeyM revolving menu and familiar point-and-click operation
- Internal memory: Waypoint! Track 30,000 points, Route 1,000 routes
- Also available - GP1870F dual frequency chart/fishfinders

FCV627 & FCV588 - Dual Freq Colour Fishfinders

Dual-frequency fish finder, equipped with revolutionary new RezBoost™ signal processing technology. Featuring the new RezBoost signal processing technology, these units boast incredible clarity and target separation when using conventional narrow-band transducers, which leads to sharper and more defined echoes. With RezBoost, not only can you expect higher resolution and sharper visuals, the FCV model also has an improved Accu-Fish function.



KEY FEATURES

- ACCU-FISH™ - A unique sh size analyzer
- Bottom Discrimination - Analyze bottom structure
- White Line feature - Discriminate fish lying near the bottom
- Congurable Alarm function around when desktop mounted.
- Share and display information with a chart plotter *Chart plotter required
- Fast transmission rate of 3,000 PRR

FI-70 Series - Instrument Display

All in one instruments, for sailboats and powerboats alike.

KEY FEATURES

- Speed - STW, Max STW, Average STW, SOG, Max SOG,
- Average SOG, Velocity Made Good (VMG).
- Wind - AWS, TWS, Max TWS, AWA, TWA, Beaufort Wind, GWD
- Heading - HDG, Average HDG, Heading on Next Tack, ROT.
- Course COG
- Timer - Count Down Timer 1, Count Down Timer 2, Count Up Timer
- Navigation - Bearing, RNG, WPT, XTE, Position, ETA Time, ETA Date, Trip, Odometer.
- Boat - Rudder Angle, Trim Tabs, Roll/Pitch.
- Engine - RPM, Trip Fuel Used, Fuel Rate, Engine Trim/Tilt, Boost Pressure, Engine Temperature, Engine Hour, Oil Pressure, Oil Temperature, Coolant Pressure,
- 4,1" Colour LCD
- Waterproof (IPX6)



Raymarine®

Multifunction Displays - A, C and E Series

A SERIES - Touch Screen Only



KEY FEATURES

- Screen Sizes (W/H) **A6** - 164 x 144mm, **A7** - 205 x 147mm, **A9** - 250 x 189mm, **A12** - 318 x 238mm
- 50 Channel internal GPS
- Navionics Silver charts included
- Navionics Gold and Platinum+compatible "Fusion Marine Stereo integration
- Multifunction display with chart, radar and fuel management functions "Also available with a dual frequency 600w ClearPulse® digital sonar
- Now available with WiFi

C SERIES - Keypad control



KEY FEATURES

- Screen Sizes (W/H) **C9** - 290 x 173mm, **C12** - 354 x 222mm
- Built-in high-sensitivity GPS receiver
- Wi-Fi streaming to Apple iPhones (4 and above) and iPads (1 and 2)
- Network up to six displays
- Blue-tooth integration
- Dual frequency fishfinder versions

Evolution Autopilots

Race, cruise, or fish - Evolution will take command! No fuss, easy to install and robust, the Evolution autopilot combines Raymarine's autopilot expertise, FUR Systems' R&D, and advanced aerospace guidance technology to create Evolution A.I. control algorithms that deliver a new level of accurate autopilot control.



- EV Sensor Core - 9-axis sensor monitors vessel motion in all three dimensions
- Precision monitoring of heading, pitch, roll, and yaw allowing the autopilot to evolve instantly as sea conditions and vessel dynamics change
- The p70 and p70R control heads feature vibrant colour displays and are powered by Raymarine's intuitive LightHouse user interface
- A pilot for all vessels - wide range of cockpit, hydraulic and linear drives available for your boat. Also compatible with 3rd party drive systems

Instrument Systems - i40 to i70 Series

i40 SERIES



- Compact displays with extra large digits
- Speed, Depth, Bidata, Digital Wind
- Same footprint as ST40 displays

i50 & i60 SERIES



- Dedicated digital (i50) and analogue (i60) displays
- i50 Speed, Depth and Tridata displays

- i60 Wind and Close Hauled displays
- SeaTalk, SeaTalk® and NMEA2000 interfaces

i70 SERIES



- Multifunction display with 4in LCD display and 160° viewing angle
- LightHouse user interface is simple and quick to use
- Display Wind, Speed, Depth, Engine, Environmental, Fuel and navigation data

ST1000+ & ST2000+ Sailboat Pilots

- ST1000+ for sailboats up to 2,500kg
- ST2000+ for sailboats up to 4,500kg
- Inbuilt SeaTalk and NMEA interface
- Autopilot and navigation info display
- Weatherproof design, 2-stage pushrod seal
- Low power consumption



Multifunction Displays - eS Series Hybrid Displays - Touch & Keyboard Control

Whether you fish, sail, or just cruise the open water, eS Series' advanced LightHouse II operating system with HybridTouch™ gives you total control. With the choice of responsive touch screen or keypad control, eS Series puts navigation, sensors, safety, and entertainment right at your fingertips.

NEW

KEY FEATURES

- Screen Sizes (W/H) **eS7** - 244 x 145mm, **eS9** - 299 x 174mm, **eS12** - 358 x 223mm
- The sleek glass bridge design of eS Series will enhance any helm station with bracket, surface and completely flush mounting options.
- Mount eS Series anywhere – flush and bracket mounted hardware included
- Super bright displays with optical bonding technology deliver sharp colors and contrast in all lighting conditions.
- Access your eS Series from anywhere onboard.
- Built in Wi-Fi allows you to stream to Raymarine mobile apps and sync with Navionics Boating.



Engine Intergration



Remote Control Options



Evolution Autopilot

Fishfinders & Fishfinder Plotters - Dragonfly

View the world beneath your boat with the photo like clarity of CHIRP DownVision™ sonar, the first high-resolution CHIRP imaging sonar for anglers. Dragonfly's dual channel CHIRP technology lets you explore structure and target fish like never before.

KEY FEATURES

- Screen Sizes (W/H) **Dragonfly 4** - 145 x 145mm, **Dragonfly 5** - 145 x 145mm, **Dragonfly 6** - 148 x 148mm, **Dragonfly 7** - 191 x 153mm
- Available with Navionics charts included on microSD
- User interface simplifies display choices and menu options
- Ultra-bright 1500 nit optically bonded sunlight display
- Tilt/swivel quick release holster with optional locking core



VHF Communications - 49E, 55E & 240E

RAY50



- Compact, space-saving design saves space on crowded helms
- No compromises; full power transmitter and robust VHF features
- Full-sized controls and LCD are easy to see and operate
- Standard NMEA2000 and NMEA0183 networking for simple connection to on-board systems.

RAY60



- Dual station and intercom capable with optional handset Accessory
- Detachable fist-mic with built-in controls and mic relocation capability
- Standard NMEA2000 and NMEA0183 networking for simple connection to on-board systems

RAY70



- Built-in AIS Receiver and 72 channel WAAS GPS
- 30W Loudhailer output with listen-back and automatic fog signals
- Dual-station and intercom capable with optional handset Accessory

GO7 XSE & GO5 - Multitouch Chartplotter

The new Simrad® GO™ series delivering easy-to-use navigation and built-in TotalScan™ and ForwardScan™ sonar technologies. GO XSE chartplotters are a perfect fit for compact sport boats and day boats requiring a smaller space. The Simrad® GO XSE series opens the brand to new recreational consumers no matter the boating activity. The all-new standalone 5-inch and the expanded 7-inch GO XSE models punch well above their weight class, boasting most of the features found in much larger networked-systems at a lower category price.

KEY FEATURES

- Easy to use multi-touch interface
- Flush, flat or bracket mount display
- Widescreen with bright LED backlight
- Fully customizable interface
- Cruise Charting View TotalScan™ skimmer transducer option provides easy install for all-in-one - StructureScan® HD,
- DownScan Imaging™ and CHIRP sonar
- Triptel™ Technology
- Full-featured Chartplotter
- Insight Genesis® and NV Digital® Charts
- High-speed 10 Hz GPS receiver
- NMEA 2000® Engine Monitoring and Instrumentation
- Integrated GoFree™ Wireless
- Forward scan compatible



IS40 - Instrument & Autopilot



KEY FEATURES

- Full colour displays
- Multiple data pages
- Speed, depth, wind, autopilot and engine data
- 40% larger display than its rivals
- Largest digits available, easy to read day or night
- Bonded LCD with 170° viewing angle
- Daisychain connectivity
- Compatible with NSO, NSE, NSS and OP10

ForwardScan

KEY FEATURES

- Forward-looking 2D sonar imaging
- Bottom Colour Tracking for a simplified bottom view
- Heading Line View combines ForwardScan depth data into heading line on charts
- Shallow depth alarm
- Maximum forward view of 8X current depth, nominally 4-5X current depth
- Operates at 180kHz, reducing interference from traditional 200kHz echosounders
- Built-in temperature sensor
- 50.8mm (2") stainless steel through-hull fitting
- Connects directly to Simrad NSS evo2, or NSO evo2 via SonarHub sounder



SonarHub

KEY FEATURES

- Compact all-in-one sonar module
- StructureScan® HD
- CHIRP sonar technologies.
- Optional transducers include AIRMAR® TM150M, single-channel CHIRP transducer and existing StructureScan HD transducers.
- Plug-and-play compatibility with Simrad NS Series multifunction displays.
- Three built-in Ethernet ports



NAIS-400 - Class B Transceiver

See and be seen on the water. Automatically and dynamically share and update your position to reduce the risk of on water collision.

KEY FEATURES

- Dual Channel
- Low power use
- Compact
- NMEA 2000
- NMEA0183 including multiplexing USB PC interface



RS90 - VHF/AIS Radio

KEY FEATURES

- Premium modular VHF Radio
- Up to 6 Stations: 4 Wired handsets and 2 Wireless handsets
- Works with HS35 Wireless Handset
- Track Your Buddy feature with compatible Simrad MFDs
- PA/Hailer Horn output with Record and Playback feature



HS35 - Wireless Handset

KEY FEATURES

- Wireless Control for RS35 VHF/AIS Radio
- Intercom
- Inductive Charging
- 100m Range
- Fully Waterproof



RS90 - VHF/AIS Radio

KEY FEATURES

- Class D DSC Approved
- Dual Channel AIS Receiver
- Ergonomic fist mic with built in speaker
- HS35 Wireless Handset Option
- Fully Waterproof
- Position Poll, Track & Group Call
- Dual/Tri Watch
- Lat/Long Display
- Loud And Clear Audio including 22 Watt Hailer with listenback
- NMEA 0183® and NMEA 2000 Compatible
- Advanced radio features including AIS



NSS Evo2 - 7, 9, 12 & 16in Touch-screen Displays

The integrated NSS evo2 MFD features a sleek display with Touch Sensible™ multi-touch interaction. TouchSensible, provides precision interaction in any sea condition with its logical keypad input and rotary, push-to-enter knob. With its wide-screen 16:9 display and expandability the NSS evo2 is well suited for center consoles, sportfishing and power cruising boats. Combo versions also available with integrated StructureScan™ and Broadband sonar.



KEY FEATURES

- Embedded, hi-gain 10Hz GPS/GLONASS antenna
- Simrad performance module integration
- Full autopilot integration capability
- Mapping Options: Navionics, C-Map MAX-N, Insight, Insight Genesis, NV Digital and charts produced with Navico Mapcreator

NSO Evo2 - Black Box Nav System

Perfectly suited to blue water powerboats and commercial vessels, NSO evo2 features high-power processing, dual video output for individual display and control of touch and non-touch monitors, sonar, radar, charting and entertainment systems integration.



KEY FEATURES

- Dual independent video output
- Range of 16, 19 and 24" multi-touch touch-screen monitors
- Performance Module Integration with Broadband Radar, WiFi-1, BSM-2 echo sounder and more
- Compatible With C-Map MAX-N, Navionics Gold and others
- Quad-core processor
- Smaller and lighter design for ease of installation
- Optimisation for wide-screen monitors
- Dedicated power cruising navigational panel
- Easy-access widgets for activating components such as SonicHub

WR10 - Wireless Pilot Controller

KEY FEATURES

- Mode: toggles autopilot between Auto and Wind modes
- Course Change Keys
- Standby: switches the autopilot to Standby mode
- Auto: engages the autopilot in Auto mode
- LED: provides flash notifications for key presses, acknowledged/not acknowledged commands and low battery



SonicHub - Marine Audio Server

Marine audio server which lets you control on-board music components from any NS display. A waterproof dock connects an iPod, iPhone or MP3 player while also keeping it protected and secure.



KEY FEATURES

- Audio streaming from a smartphone or tablet
- 50W x 4 amplifier
- NMEA 2000® connection
- audio/entertainment protocol
- Dual USB ports for connecting and charging multiple devices
- Video output via Composite RCA for playing video files from a USB drive
- Pre-amp audio output
- Pre-amp subwoofer output
- Dual Stereo AUX input (AUX1, AUX2)

HALO RADARS - Pulse Compression Radar

Combining the best characteristics of traditional pulse and FMCW broadband radar systems, our Halo™ Radar uses Pulse Compression technology to provide an unprecedented mix of long and short detection range, high target definition, and minimal clutter. Solid State technology means minimal warm-up time and maximum ocean-going reliability, while low-power pulsed transmissions make Halo Radar safe to run in anchorages and marinas.



- Halo3 25W solid-state pulse compression radar with 3-foot open array antenna, 48nm range with Beam Sharpening.
- Halo4 Broadband 25W pulse compression radar with 4-foot open array antenna, 64nm range with Beam Sharpening.
- Halo6 25W solid-state pulse compression radar with 6-foot open array antenna, 72nm range with Beam Sharpening.

KEY FEATURES

- True 72nm range with 6-foot open array antenna
- Beam Sharpening with Target Separation Control
- Compatible exclusively with Simrad NSS evo2 and NSO evo2 multifunction displays
- Dual Range operation
- Advanced signal processing with Custom, Harbour, Offshore, Weather, and BIRD modes
- High-speed 48RPM operation
- InstantOn™, ready in 16-25 seconds from power-on, instant from standby
- MARPA target tracking, up to 10 targets (20 with dual range)**
- Low electromagnetic emissions and radiation
- Low power consumption with 12/24V operation
- Ethernet connectivity
- Unique blue LED accent lighting with brightness control

HD RADARS - HD Digital Radar



- TXL-10S-4 10kW 4ft HD low emission Open Array, 64nm, 1.8 beamwidth
- TXL-10S-6 10kW 6ft HD low emission Open Array, 72nm, 1.2 beamwidth
- TXL-25S-7 25kW 7ft Super HD low emission Open Array, 96nm, 1.0 beamwidth

Radar 4G - Networked

KEY FEATURES

- Crystal clear image
- Automatic clarity
- 10 MARPA tracking
- Dual guard zones
- Instant on
- Low power consumption, extremely low emissions
- 50% greater ranger than 3G
- Dual range
- 48 RPM option
- Advanced target detection



Zeus2 - 7in, 9in and 12in Touch-screen Multifunction Displays

The new Zeus2 chartplotter is packed full of B&G's unique sailing specific features. Additional benefits include an easy to use, highly intuitive and responsive user interface, multi-touch wide-screen with pinch to zoom technology- all backed up by B&G's signature rotary controller. From the ultra-fast processor, which offers seamless chart redraw and super sharp graphics, to the bonded glass, bright LED backlit screen, every inch of the Zeus 2 has been engineered to provide style and performance in the toughest of environments. Zeus2 integrates seamlessly with your network including Broadband Radar, AIS, CZone Digital Switching and much more. Perfect for the sailor who likes to spend more time on the water than at the chart table, the Zeus 2 has an array of options to help improve on water navigation and maximise sailing success.

SailSteer: A composite sailing screen, which combines key sailing data into one clear display. The SailSteer navigation screen shows Heading and COG, Current Layline, Calculated Tide, True Wind Angle indicator, Rudder Angle Indicator and Opposite Tack Layline to name but a few features. All data is shown relative to the boat-so it's quick and easy to relate to reality.

GoFree: Control and view your Zeus2 via your tablet-wherever you are. View data on a Smartphone and carry a chartplotter in your pocket. Requires GoFree WiFi-1 Wireless Gateway Module.

Maximum Mapping: Zeus2 is compatible with leading cartography options, including Navionics, Insight and C-Map, which can be installed via a convenient dual chart slot to give sailors the level of detail they need for confident, expert navigation on the water. Dual media card slots let you to run multiple datasets.

KEY FEATURES

- Responsive multi-touch display- pinch to zoom, tap to select, swipe to pan
- Sail Time calculations- no more reliance on ETAs and distances that are only useful for powerboats
- Enhanced Laylines - see your tacking angles on a chart, even without an active way-point
- Enhanced Tides - internal tidal calculations and Navionics® Dynamic Tides and Currents data (requires Navionics cartography)
- Internal high-sensitivity GPS antenna
- Low power consumption
- Video input output
- Integrated Pilot control
- NMEA 2000, 0183 and Ethernet compatibility
- Forward Scan (requires FS transducer and Sonar Hub)



GoFree WiFi-1 - Wireless Module

The WIFI-1 is a marine grade wireless gateway which allows owners of compatible B&G Zeus and Zeus2 Touch Displays to view data on a wireless device such as an iPhone, iPad or Android device. Multiple tablets or smartphones can be used to view B&G network data. The GoFree Controller app allows Zeus Touch displays to be controlled from the wireless device, including SonicHub control.

The WIFI-1 connects to B&G Zeus Touch via Ethernet and supports wireless connectivity using 802.11 b+g wireless protocols. A number of B&G Zeus Touch units can be used with just one WIFI-1 module, meaning that an entire system can be online with just the addition of one handy wireless gateway.



KEY FEATURES

- Wireless technology
- Full Integration
- Network ready
- Marine Specific
- Zeus Touch compatible
- Rugged and waterproof
- Low Power device
- Easy to install
- Anti-VHF disruption filters

NAIS-400 - AIS Class B Black Box Transceiver

See and be seen on the water with this advanced AIS Class B transponder. Automatically and dynamically share and update your position to reduce the risk of on water collision. Also available is the NSPL-400, a compact low power antenna splitter, with very low signal loss and FM antenna output.

KEY FEATURES

- Class B transceiver
- Dual Channel
- Low Power use
- NMEA 2000 interface
- NMEA0183 including multiplexing USB PC interface
- Compact



3G Broadband Radar - Networked Radar

B&G's Broadband 3G™ Radar provides amazing target resolution, even at an unprecedented 1/32 nm range. Docks, channel markers, moored vessels and other critical targets are displayed with clarity and separation, for added confidence in close quarters. Broadband Radar™ technology also eliminates the "main bang" of a pulse radar — the obscured "dead zone" immediately around the vessel — which interferes with close target detection. Broadband 3G™ Radar allows you to see more targets further away from your boat.

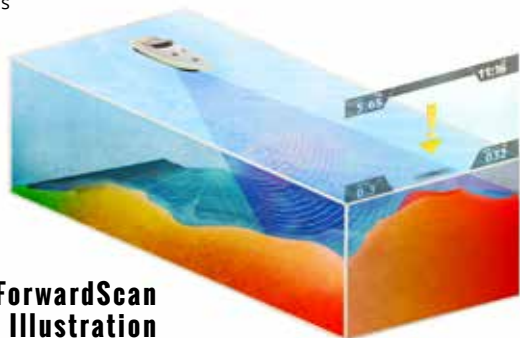


Vulcan 5" & 7" XSE - Touch-screen Multifunction Displays

The new Vulcan 5 & 7 inch series delivers easy-to-use navigation, specific sailing features and built-in ForwardScan sonar capability. The Vulcan series offers a great entry point to the B&G brand for all types of sailors, with the dedicated sailing features you expect from B&G at an eye catching great value price.

KEY FEATURES

- Forward Scan (requires FS transducer and Sonar Hub)
- Award winning sailing features including SailSteer, Sailing Time, etc.
- Compatible with a wide range of charts: C-Map Max-N, Navionics, NV Digital Charts, Insight, Insight Genesis
- Integrated Wi-Fi for GoFree connection
- Control your B&G Autopilot
- Large digit instrument display
- Built-in 10Hz GPS
- Built-in Cruise Sonar
- AIS Integration



ForwardScan Illustration



Triton - Pilot

Clearly read sailing information including wind, speed, depth, heading, pilot status, log, timer and much more on a tough, sunlight viewable, full colour screen that's almost 40% larger than rivals.



KEY FEATURES

- Intelligent sail steering - Steer to compass, true wind angle or apparent wind angle for optimum sailing performance
- Smart Manoeuvre - Tack at the touch of a button to make life easier when you're short handed
- Chartplotter integration - navigate to way-point, or follow a route

VHF - H50, V50 & V90

H50

- Portable VHF handset
- In-built speaker and front mic
- Intercom functionality
- AIS vessel display
- Waterproof to IPX-7
- 200m range handset to handset
- MOB
- 8 hours' battery



V50

- Fixed mount DSC VHF
- Built-in AIS receiver
- Powerful external speaker / PA
- Dual and TriWatch modes
- MOB
- TrackYourBuddy feature

- AIS plot, waypoints, navigation and MOB
- Waterproof to IPX-7
- Plug-and-play marine network integration



V90

- Advanced radio features
- 'Track your buddy' and NMEA connectivity
- Up to 6 stations
- Voice record and replay

4G RADOME

Award-winning Broadband 4G Radar radar will keep constant watch over you and your crew. If you're taking on severe conditions, racing offshore through fog, iceberg fields or at night, you'll be glad that Broadband 4G Radar has a 36nm working range and can even see up to the bow of your boat.

KEY FEATURES

- 36nm Working Range
- Customisable Target Separation
- B&G Precision
- Low Emissions
- InstantOn
- High Target Separation
- No Main Bang



Triton - Instruments

The Triton instrument system brings the outstanding performance synonymous with B&G to the cruising yachtsman and club racer in an easy to use, great value package. Triton navigation systems consist of large and clear instrument displays, an intuitive autopilot controller and sensors packed full of race-winning pedigree, all of which can be easily installed and integrated with other electronics to create a bespoke system designed around you and your yacht.



KEY FEATURES

- Multifunction "do it all" display
- Straightforward user interface
- 4.1in colour display - nearly 40% more area than competing products
- Bonded screens - excellent visibility in all conditions
- Low power consumption typically 100mA - up to 30% less than its rivals
- Dedicated pilot control - or interface with Zeus MFD
- Expandable - choose a simple network and expand it to fit your requirements with full B&G Zeus navigation system compatibility
- B&G Precision - Grand Prix derived sensor technology provides the most accurate information available
- Available as a Speed/Depth/Wind Cruise Pack with 3 displays and transducers
- Easy Installation - Micro-C connectors provide quick and easy daisy-chain connection, ideal for retro-fit or new build.

LOWRANCE®

HDS GEN3 - 7-12in HD Multifunction Displays

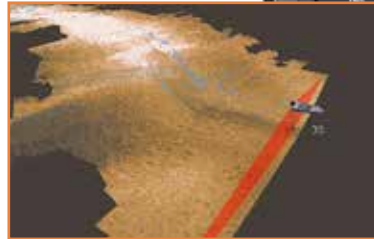
HDS Gen3 fishfinder/chartplotter displays are a revolutionary step forward for the marine electronics industry. Technology is not slowing down. Are you keeping up? HDS Gen3 is a bottom machine that goes well beyond finding. HDS Gen3 gives birth to an exclusive new interface that allows you to fully control functions through either multi-touch or full key pad operation depending on user preference and on-the-water conditions.

KEY FEATURES

- Plug-and-play compatibility with Lowrance performance modules -- Broadband Radar, SonicHub Marine Audio, Class B AIS and DSC VHF -- as well as industry-leading technologies, such as SmartSteer control for MotorGuide PinpointGPS and the Lowrance Outboard Pilot.
- Connects and communicates with HDS Gen2 Touch and HDS Gen2 multifunction displays
- Single Ethernet networking port
- Micro-C connection for NMEA 2000® devices
- Video input via optional adapter cable
- Same flush-mount cutout and bracket as HDS-7 Gen2 Touch
- Supported by Lowrance Advantage Service program
- Structure Scan 3D
- Hydraulic Lowrance pilot



StructureScan 3D



Outboard Pilot - Cable-Steer Pack

Everything you need in one box to fit an autopilot to your cable-steer outboard motor, the Outboard Pilot lets you focus on fishing activity while keeping the boat on course. When connected to a Lowrance HDS Gen2 or Gen2 Touch, the Outboard Pilot can steer to a way-point or along a route, select a turn pattern or simply hold a constant heading. The Lowrance SmartSteer™ user interface allows you to easily switch between electric-steer, trolling-motor control and outboard motor control directly from your HDS display.

KEY FEATURES

- "One-touch" route creation from saved trails.
- Repeat your path with automatic turn patterns.
- Recommended for single-outboard set-ups, on boats that are 30 feet and less, in length.
- VRF (Virtual Rudder Feedback) – simplifies pilot installation -- eliminating the need for a rudder position sensor.
- Easy setup – straightforward guide steps you through first-time install.
- Easy-to-install, plug-and-socket connection – with no complex terminal wiring.



Broadband Radar - Networked

The revolutionary Broadband Radar offers amazing target resolution, even at 1/32nm range. Docks, channel markers, moored vessels and other targets are displayed with clarity and separation. Broadband technology also eliminates the "main bang" of a pulse radar (the dead zone immediately around the vessel) which interferes with close target detection. Because Broadband Radar transmits at 1/2000th the power of typical pulse radars (10 times less than an average mobile phone), the radome can be mounted in locations never before possible. No more waiting ages for a magnetron to warm up - 100% solid-state design provides InstantOn™ capability!



KEY FEATURES

- 19in radome, 5.2" beamwidth
- Crystal clear image of your immediate surroundings
- First radar with no radiation hazard
- InstantOn™ with no tuning required
- Low power consumption, ideal for yachts

SonicHub 2 - Marine Audio Server

The SonicHub2 gives boaters full control of audio and video playback directly from Lowrance® HDS Gen3, Gen2 Touch, Simrad® NSS evo2, NSO evo2, GO7 and B&G® Zeus2 Glass Helm and Vulcan 7 displays. The new system features integrated Bluetooth® for audio streaming from a smartphone or tablet - including two USB ports for audio/video playback and device charging.



KEY FEATURES

- Audio streaming from a smartphone or tablet
- 50W x 4 amplifier
- NMEA 2000® connection
- audio/entertainment protocol
- Dual USB ports for connecting and charging multiple devices
- Video output via Composite RCA for playing video files from a USB drive
- Pre-amp audio output
- Pre-amp subwoofer output
- Dual Stereo AUX input (AUX1, AUX2)

SonarHub - Sounder Module

Compact SonarHub™ module provides an all-in-one solution for adding best-in-class StructureScan® HD and CHIRP sonar capabilities to compatible Lowrance fishfinder/chartplotter displays.



KEY FEATURES

- Compact all-in-one sonar module
- CHIRP sonar with AIRMAR® TM150M transducer delivers extremely efficient pulse generation
- StructureScan® HD offers best-in-class, side-scanning range and resolution, plus DownScan Imaging™
- Optional transducers include AIRMAR® TM150M, single-channel CHIRP transducer and existing StructureScan HD transducers.
- Compatible with ALL-NEW SpotlightScan™
- Plug-and-play compatibility with Lowrance HDS Gen1 (not including SpotlightScan™ and CHIRP sonar), HDS Gen2 and Gen2 Touch fishfinder/chartplotter models.
- Three built-in Ethernet ports

HOOK™ Series

The Lowrance HOOK standalone series combines the trusted Lowrance fishfinder and chartplotter performance all at great value.



KEY FEATURES

- Lowrance® exclusive, brilliant, high-resolution, 4-, 5-, 7, and 9-inch colour displays
- Simple, easy to use interface
- CHIRP Sonar + DownScan Imaging™
- DownScan Overlay™ technology overlays DownScan Imaging onto CHIRP Sonar
- Advanced Signal Processing (ASP™)
- TrackBack™ to review recorded sonar history and pinpoint locations with a waypoint
- Highly accurate, built-in GPS antenna
- Optional chart upgrades include Navionics + and Jeppesen C-MAP MAX-N
- Use Insight Genesis® custom maps created from your own sonar logs
- HOOK-4x, HOOK-5x and HOOK-7x models available with sonar only features

ELITE Ti Series

Lowrance is announcing a new family of fishfinders/chartplotters - the Elite-Ti series, featuring 7 and 5-inch touchscreen displays. The Elite-Ti series combines high-end features with powerful performance at an affordable price. The Elite-Ti series features 7- and 5-inch standalone displays that include a touchscreen, easy-to-use interface, CHIRP Sonar, StructureScan® HD SideScan and DownScan Imaging™, built-in GPS antenna and a wide range of high-definition mapping options.

Elite-Ti models support Low/Mid/High CHIRP and 50/83/200/455/800kHz frequencies. Integrated wireless connectivity allows boaters to not only download software updates directly to the unit, but also gives them the capability to download Insight Genesis custom maps directly to the chartplotter for immediate use.



KEY FEATURES

- High-resolution touch display
- CHIRP Sonar, StructureScan® HD and DownScan Imaging™
- TrackBack™ - Rewind your CHIRP sonar, SideScan or DownScan Imaging history to review structure or fish targets and mark the location with a waypoint
- Internal GPS antenna - Highly accurate, built-in GPS antenna
- Optional chart upgrades
- Built-in wireless connectivity provides access to the GoFree Cloud where you can shop, purchase, download and immediately use Insight maps, and third-party maps from GoFree partners
- microSD card slot

Link-5 - Fixed DSC VHF Radio

Compact and affordable radio with an ultra-rugged waterproof (IPX7) chassis. Meeting the latest international compliance standards, the Link-5 offers ultimate reliability and performance, for unparalleled safety and communication on the water.



KEY FEATURES

- 1/25W transmit power
- Class D compliant with dedicated DSC transceiver
- High quality easy grip rubber fist microphone with speaker
- Quick "favourites" channel access
- Extra large channel 16/9 key and rotary knob
- Dedicated volume and Squelch knob

Link-8 - Fixed DSC VHF Radio Dual Channel AIS Receiver

The Link-8 marine VHF radio combines reliable performance with critical safety features for complete communication anywhere on the water. Features a built in dual channel AIS receiver with AIS plot functionality and NMEA2000/0183 connectivity.



KEY FEATURES

- Extra large, high resolution LCD display
- High quality fist mic with built-in speaker
- MOB feature
- Track Your Buddy option
- PA/Hailer horn output with Listen Back Feature
- 20 user programmable names with MMSI
- Fully waterproof

LINK-2 - Hand-held VHF Radio

With a built-in GPS receiver, the Lowrance Link-2 is a full featured 1/5W hand-held VHF marine radio with the added convenience of a simple plotter with Great Circle way-point navigation, Man Over Board functionality and storage for up to 500 way-points. It's waterproof and it floats too!

KEY FEATURES

- Unique trackplotter screen feature
- "Track-Your-Buddy" - pinpoint and display the location of other vessels via position polling
- "Get Buddy" transmits position at the push of a button
- Save a buddy list of up to 20 people
- Large display with adjustable contrast and backlighting
- 1400mAh Li-Ion battery
- Signal Strength Indicator
- Lat/Long and time display
- Distress call button

SUPPLIED WITH

Rubber duck antenna, desktop charger, mains adapter, wrist strap & belt clip.



Fast Find 220 - 406MHz GPS PLB

The Fast Find 220 uses advanced technology packed into a simple, lightweight palm sized unit, now with 6 year battery life. Using the dedicated 406MHz frequency, the 220 transmits your unique ID and precise GPS position to the global network of search and rescue satellites. Within minutes rescuers are alerted to your situation, and receive regular position updates. Emergency services can also home in on your beacon's 121.5MHz transmission.

KEY FEATURES

- Compact and lightweight
- 6 year battery life
- Floats with buoyancy pouch (included)
- 406MHz transmitter and 121.5MHz homing frequency
- Integral GPS
- Waterproof to 10m
- No subscription fees or call charges
- SOS Morse LED flash light
- Safe-stow antenna
- Simple design, easy to use
- Minimum 24hrs continuous operation



Smartfind G5 - 406MHz GPS EPIRB

Ultra-compact 406MHz EPIRB with a high performance multi-channel integral GPS. Supplied with a Carrysafes mounting bracket, the G5 can be activated manually or automatically by immersion in water. A hydrostatic release casing is also available.

Smartfind EPIRBs are programmed with a unique serial number which must be registered with the national authorities. Where permitted by these authorities, beacons can be re-programmed with the vessel's MMSI or Radio Call Sign.

KEY FEATURES

- 1/25W transmit power
- Class D compliant with dedicated DSC transceiver
- High quality easy grip rubber fist microphone with speaker
- Quick "favourites" channel access
- Extra large channel 16/9 key and rotary knob
- Dedicated volume and Squelch knob



Smartfind S10 - Personal AIS Beacon

The Smartfind S10 AIS Beacon is an innovative manually activated personal safety device which incorporates both AIS (Automatic Identification System) and GPS technology. Smartfind S10 is waterproof, buoyant and compact, intended for carriage by divers, crew and anyone who works or carries out leisure activities on the water. When activated the Smartfind S10 transmits an AIS signal to the vessel the individual has come from and to all AIS enabled equipment within a typical 4 mile range, signalling that help is required in a man overboard or lost diver situation.

KEY FEATURES

- Manually activated personal safety device to aid recovery of persons in difficulty
- Transmits GPS position information over AIS every minute
- Typical range 4nm
- Small and light for unobtrusive carriage
- Waterproof, buoyant and fully submersible to 60m
- Flashing LED light
- Minimum 24 hour continuous operation
- 5 year battery life



Smartfind S20 - Survivor Recovery System

The Smartfind S20 SRS (Survivor Recovery System), is a personal AIS device designed to be fitted to a life-jacket and assist in Man Overboard recovery. It enables AIS equipped vessels to quickly and efficiently locate and retrieve a missing crew member. It also features a flashing LED indicator light to aid detection.

KEY FEATURES

- Life-jacket mounted personal AIS beacon
- Transmits GPS position information over AIS every minute
- Compact and lightweight
- Webbing clip or oral inflation tube mounting
- Provides exact location, distance and bearing to locate a person in need of assistance
- Minimum 24 hour continuous operation
- 7 year battery storage life



Smartfind M15S - Dual Channel AIS Receiver

The SMARTFIND M15S is a low cost receiver that puts AIS technology within the reach of even those on a limited budget. It receives all Class A, Class B, AIS SART, AIS MOB and AIS Base Station transmissions, plotting their positions directly on your chartplotter or PC/Mac using the PC AIS Viewer software supplied.

Supporting integration with existing navigation systems via its NMEA0183 or USB.

The SMARTFIND M15S has the added innovation of a built in VHF Splitter, providing shared antenna capability.



Smartfind M10W - AIS Transponder

M10 AIS Class B Transponder, transmits vessel position information as well as receiving all AIS targets within 20 miles of the boat, typical. Using the built-in GPS receiver, the SmartFind M10 determines position, speed and course, and once this is combined with other navigational information, it is automatically transmitted without any user interaction. When received by other vessels and coast stations, the data built up to provide a live graphical display of traffic in the area. W version includes WiFi for smartphones.



KEY FEATURES

- Supports NMEA2000 and NMEA0183 output,
- WiFi interface as well as USB connectivity.
- SD card slot
- 'Silent' option, allows the user to temporarily stop the broadcast of identifying information on occasions where either privacy or security is required.



WatchMate Vision - AIS Transponder

Brings a new dimension to AIS by the intuitive way it eliminates unwanted alarms and removes clutter from the display. It prioritises only the targets that have a collision risk while allowing you to customise the powerful features to your current situation (Offshore, Coastal, Harbour, Anchored).



KEY FEATURES

- NMEA 2000 I 0183, WiFi and waterproof USB connectivity
- WiFi options; Access Point up to five devices or connected to an existing router
- Worldwide coastal outlines on colour touch-screen
- Screen readable with polarized lenses
- Prioritised target list and split screen views
- Transponder Silent Mode option for privacy
- Free WatchMate app for iPhone/iPad/Android
- Internal high-performance parallel two channel Class B AIS transponder
- 50 channel GPS receiver with internal antenna
- Special alarms when used with all AIS Man-overboard devices

XB-8000 - BlackBox AIS Transponder

A unique Class B AIS transponder with GPS and WiFi allowing AIS and GPS information to be viewed from anywhere on your boat. NMEA 2000 gateway translates instrument data (wind, depth speed, heading, etc) making it available on iPad, iPhone or Android tablet.

KEY FEATURES

- High-performance two channel AIS Transponder
- View AIS & navigate from PC or tablet anywhere on your boat over wireless connections
- Free WatchMate app
- NMEA 2000 and 0183
- Translates and routes NMEA 2000 instrument data over USB and WiFi
- WiFi access point or connect to an external router
- Waterproof
- Transponder Silent Mode option for privacy
- Includes 50 channel GPS receiver with WAAS/EGNOS and external GPS antenna
- Multi-Colour operational status LED



XB-6000 - BlackBox Class B AIS Transponder

This AIS transponder is a unique Class B AIS transponder allowing NMEA navigation information to be used on almost any wired device. Mounting the XB-6000 is made easy with innovative cable connection points that create neat low profile installations.



KEY FEATURES

- NMEA 2000 & 0183, and USB
- Translates and routes NMEA 2000 instrument data over USB and NMEA 0183
- Makes NMEA 0183 data available over USB.
- Internal high-performance parallel two channel AIS transponder
- You can switch this transponder into Silent Mode (receive-only) from your PC, Mac or with a hard-wired switch
- Includes 50 channel high speed 5Hz GPS receiver, built-in GPS antenna which eliminates the need to install the external GPS antenna in many installations.
- Includes our powerful external GPS antenna and 10m (33') cable for those installations that require it
- View AIS and navigate from any AIS-capable chart plotter, multi-function display, and PC or Mac running a wide variety of 3rd party navigation software

SP160 - Splitter

At last An Antenna Splitter with Gain Not Loss. [it was missing the full stop here] Many AIS splitters introduce significant signal loss, some say no loss but this unique Vesper Marine splitter is the only one that provides signal gain - improving AIS reception and increasing range.

KEY FEATURES

- AIS Sensitivity Gain
- Low power consumption
- Simple connections
- Easy installation
- LED status indicators
- AM and FM radio connection
- VHF-in-use indicator
- Fail-safe VHF priority
- The unique antenna quality LED will indicate a problem with the antenna, cable or installation.
- 12 or 24 Volt supply
- Waterproof



WatchMate 850 - Class B AIS Transponder

The WatchMate 850 Transponder incorporates a built-in GPS receiver and antenna with the award winning WatchMate collision avoidance display making it the easiest AIS to install and use. The WatchMate 850 transmits your AIS data and displays data from all AIS equipped vessels in your vicinity. Audible warning alarms are sounded if a potentially dangerous situation exists. The alarm sounds whenever a target is detected that will come dangerously close even though it may still be many miles away. Ultra low power consumption makes it very well suited for energy conscious vessels.



KEY FEATURES

- Ultra low power consumption
- Integrated GPS antenna
- Large 5in sunlight viewable display
- Easy to use
- Direct Selective Calling (DSC)
- AIS SART and MOB
- Target plot display
- CPA and TCPA, Bearing and Range
- CPA, Guard and Anchor alarms
- External alarm output
- Silent Mode
- Graphical plot shows crossing situations
- Meteorological and hydrographic display
- Fully waterproof including USB connection
- External interface

WatchMate 750 - AIS Display & Receiver

The WatchMate 750 incorporates an internal high performance two channel AIS receiver within the award winning WatchMate collision avoidance display. Simply connect to your existing GPS receiver and plug in a VHF antenna and the WatchMate 750 displays data from all AIS equipped vessels in your vicinity. Reduces the clutter on the screen when operating in high traffic areas by prioritising only the targets that pose a collision risk. Customisable filtering and alarms provide maximum flexibility and the unique crossing situation shows graphically whether a target will pass ahead or behind. Sounds internal and external alarms, includes an anchor watch alarm and triggers an alarm for AIS man overboard devices.



KEY FEATURES

- Ultra low power consumption
- Large 5in sunlight viewable display
- Easy to use
- AIS SART and MOB
- Target plot display
- CPA and TCPA, Bearing and Range
- CPA, Guard and Anchor alarms
- External alarm output
- Graphical plot shows crossing situations
- Meteorological and hydrographic display
- Fully waterproof including USB connection
- External interface



ocean SIGNAL - SURVIVAL SOLUTIONS

rescueMe MOB1 - AIS & DSC MOB

Introducing the world's smallest AIS MOB device with integrated DSC – the rescueME MOB1 from Ocean Signal. The MOB1 is compatible with even the most compact inflatable life-jackets. The integrated strobe light ensures maximum visibility in low light conditions.

DAME NOMINATED



The MOB1 communicates with the vessel you have been separated from and other vessels in the vicinity (up to 5 miles range dependent on conditions).

Once activated your MOB1 will transmit an alert to all AIS receivers and AIS enabled plotters in the vicinity. The integrated GPS ensures precise location is sent to your vessel and any others that may be assisting. An additional feature of the MOB1, is its ability to activate the DSC alarm on your vessels VHF, alerting your crew to the situation.

rescueME PLB1 - Personal Locator Beacon (PLB)

The rescueME PLB1 is the world's smallest Personal Locator Beacon. Wherever at sea or on land, the rescueME PLB1 provides the reassurance that emergency services can be alerted by the press of a button.

Despite its ultra-compact size, rescueME PLB1 uses the same Cospas Sarsat search and rescue satellite network as the E100/G EPIRBs. When activated, the rescueME PLB1 transmits your position and unique ID to a Rescue Coordination Centre via satellite link. Rescue services are promptly notified of your emergency and regularly advised of your current location. To assist with search and rescue, a homing signal is transmitted on 121.5MHz, which is received by equipment fitted to both sea and airborne rescue craft. The rescueME PLB1 can be operated with one hand in even the most challenging situations. A spring loaded flap covers the activation button preventing inadvertent use. The integrated strobe light ensures maximum visibility with an incredible 1 candela output. RescueME PLB 1 can be easily fitted to a life-jacket or belt taking up minimal space and ensuring it is easily accessible.



KEY FEATURES

- Waterproof to 15m
- Easily deployed antenna
- 30% (typically) smaller
- Fast accurate positioning
- No Subscription
- 7 year battery life

rescueMe EPIRB1 - EPIRB

The rescueME EPIRB1 provides peace of mind with an impressive 10 year battery life. The world's most compact EPIRB can always be on hand, as its small size allows it to be easily retained within its quick release bracket or placed in an emergency grab-bag or life raft.



KEY FEATURES

- 30%(typ) smaller
- 10 year battery life
- 48+ hours operational life
- 5 year warranty †
- Fast accurate positioning with 66 channel GPS
- Retractable antenna
- Quick release bracket
- Secure lanyard

rescueME EDF1 - Electronic Distress Flare

Offers users a safe and long-lasting solution to visual signalling in an emergency. The unique lens design combined with the use of advanced LEDs and highly efficient circuit technology ensures a constant level of light output throughout the life of the user replaceable battery.

The light output is a beam of over 30° throughout the full 360° azimuth, providing in excess of 6 times more light coverage than other electronic flares*. Light is also distributed throughout the hemisphere above the unit to ensure visibility from the air. Unlike single use pyrotechnic flares the rescueME EDF1 can be used repeatedly in any of its four modes, ensuring continued visibility is maintained over a longer period. The unit is both safe to store and operate while also eliminating any worries associated with disposal.



KEY FEATURES

- Advanced LED technology - Safe operation
- Compact, rugged design
- Superb 360 degree visibility in the Azimuth
- Excellent visibility for aircraft and helicopter SAR
- Up to 6 hours battery use
- Constant brightness maintained throughout the life of the battery
- Four modes of operation plus SOS signalling
- Easy change replaceable battery
- Range up to 7 miles
- Waterproof to 10 meters
- Battery test function

M100/M100x - Maritime Survivor Locating Device

Designed to meet the needs of the professional marine market and its offshore workers. The M100 and M100X can be fitted to a life jacket or immersion suit and will automatically activate on inflation of the jacket or on submersion when fitted to the suit. Once activated the M100 and M100X will transmit an alert to all AIS receivers and AIS enabled plotters in the vicinity. The M100 and M100X also transmit a 121.5 MHz homing signal in addition to the AIS. The integrated 66 channel GPS ensures a position update is provided every minute via AIS. The M100X is designed to meet the European ATEX directive and IECEx approval for use in zone 2 explosive atmospheres



KEY FEATURES

- Designed for automatic activation in life jacket or immersion suit
- AIS transmissions for position plotting
- 121.5MHz transmission for homing
- M100X ATEX and IECEx Zone 2
- >12hours transmission
- 66 channel GPS for fast accurate positioning
- 2 year warranty
- Simple to fit

SAFESEA E100/E100G - 406MHz/121.5MHz GPS EPIRB

SafeSea EPIRBs operate in the 406MHz satellite band and are also fitted with a 121.5MHz homing beacon and high brightness LED strobe light for fast on-scene location.

The SafeSea E100G includes an inbuilt 50 channel GPS providing fast and accurate signal acquisition (typically within 30 seconds).

At 96hrs, battery operating life is the highest in the industry, so an Ocean Signal EPIRB keeps rescue services updated with your location for longer.



High brightness LED strobe light



User replacement non-hazardous battery



KEY FEATURES

- Choice of GPS and non-GPS models
- Meets or exceeds all International standards
- Class 2 (-20°C - +55°C) for general use
- Non hazardous battery
- Replaceable batteries with five year replacement interval
- Operating controls protected from accidental activation
- Manual bracket, manual release housing and float free housing options

Ocean Signal AIS Alarm Box

Designed to ensure that the moment any AIS MOB or AIS SART signal is received an audible alarm is sounded ensuring everyone on the vessel is alerted to a possible MOB or a crew in need of rescue. Its simple design, compact nature and use of NMEA 0183 means that integrating the AIS Alarm Box into your AIS receiver and existing network is straight forward.

The Ocean Signal AIS Alarm has the ability to be programmed by the user with up to 10 individual MMSI numbers, multiple tones to identify the source of the AIS signal (MOB or SART) as well as being waterproof to allow for external mounting.

KEY FEATURES

- Panel or bracket mount
- Detects AIS MOB and AIS SART devices
- Waterproof (for external mounting)
- Multiple tones to identify source
- Alarms on all received or specific targets
- NMEA0183-HS (38400baud) input
- Programmable with up to 10 individual device MMSI numbers



- NMEA through-port for easy integration
- Supplied with power and USB cables

SPOT3 - Gen3 Psnl Tracker/Satellite Distress System

The latest generation of award-winning SPOT devices, giving you a critical, life saving line of communication using 100% satellite technology.

SPOT Gen3's customized tracking features take your SPOT experience to the next level. Only with SPOT Gen3, is tracking motion-activated with Unlimited or Extreme tracking upgrades. A vibration sensor tells your SPOT to send track updates when you are moving and to stop when you do. (This is a great new battery-saving feature! And, you don't have to remember to re-set your tracking after 24 hours.)



KEY FEATURES

- Improved Performance
- Motion activated - SPOT3 sends track updates when you are moving and stops when you do
- Unlimited tracking - no need to reset after 24hrs Extreme tracking - vary tracking rate down to every 2.5 minutes
- Longer battery life - approx twice as much as SPOT2!
- USB power input



SPOT CONNECT - Smartphone Satellite Communicator

No mobile signal? Turn your smartphone into a satellite communicator - simply pair your smartphone with SPOT Connect and get connected to a global satellite network that lets you send messages and GPS coordinates from virtually anywhere on the planet.



KEY FEATURES

- Send custom "Type & Send" 41 char text messages
- Store up to 10 predefined messages
- Provide GPS functionality to non-GPS devices
- Track Progress on Google Maps
- Transmit an SOS message in an emergency
- Send location-based SMS or emails via satellite
- Web and Mobile account management
- Blue-tooth wireless connection
- On device SOS button
- Waterproof and lightweight



Pro Power Quasi Inverter

Tough aluminum extrusion with great looking plastic end caps. Euro and British sockets are on all this range, enabling the unit to be compatible across Europe without problem. The new extrusion design has allowed us to reduce the size of the 1000-2500W units by nearly 40% but still offer their full power and even better performance over the previous models. If you also require a battery charger then look at our new Pro Combi Q range. Noisy fans was always a favorite complaint with our standard range, So for power to size ration this new larger size Pro Power Q range is simply unchallenged.



KEY FEATURES

- Socket Type: British / Euro
- Voltage DC: 12
- Power (continuous) Watts: 2700
- Size L x W x D mm: 370 x 250 x 100
- Weight Kg: 5
- Includes: Remote Control Panel and 10m cable

Pro Combi - Inverter/Charger

The new Pro Combi range is designed to be very competitive, no frills, high performance, and value for money products, presented in a simple, easy to install and use style. If you require power assist, parallel connection, three phase output functions or any other enhanced combi features then this range is not for you. If you're not familiar with these things this ProCombi is perfect for you.



KEY FEATURES

- 30 amp through current
- P.F.C. (power factor correction)
- Includes remote control with 10m cable.
- 4 step progressive charging
- 8 battery type selector
- Charger only select option (on S models only)
- Earth - neutral link when on inverter mode to comply with latest regulations

Pro Charge Ultra

Every so often it becomes necessary in a competitive market to simply raise the bar so high its leaves everyone in your wake, we do this regularly on other products but this year we re-visited our standard battery charger range to make a product so far beyond our competitors for performance, style and value that you simply leave them behind, with this new charger we like to think we have done just that.



KEY FEATURES

- 12 v 50 amp model
- Input voltage range 90-270 v 40-70 hz
- Power Factor at 230 v 0.976
- Efficiency 89.4%
- Full load current (110/230v) 9.8/4.6
- Ripple noise (R.M.S.) 14mv
- Ground leakage 0.5 ma
- Generator/ mains power required to run unit (watts)
- 12 v 50 amp approx 750 watts
- volt metre accuracy +/- 1%
- amp metre accuracy +/- 1%

10wp - PV Logic Flexi Solar Panel Kit

The PV Logic Flexi range of is a tough, fully weather resistant flexible solar panel designed for use in the harshest environmental conditions. Suitable for permanent fixing or stand alone use, the 10wp Flexi kit is ideal for battery maintenance, camping / caravanning, electric fence power and many more applications



KEY FEATURES

- Super tough and powerful semi flexible solar panel
- Crystalline cell for maximum energy per sq metre
- Fully weather sealed system - even against salt water
- Ideal for deck tops, caravan roofs and camper vans
- In built diode prevents battery discharge
- 5 year panel warranty and 20 year cell performance warranty*



20wp - PV Logic Flexi Solar Panel Kit

Suitable for permanent fixing or stand alone use, the 20wp Flexi kit is ideal for battery charging, camping / caravanning, electric gate motors and many more applications.



KEY FEATURES

- Super tough and powerful flexible panel
- Crystalline cell for maximum energy per sq metre
- Fully weather sealed system - even against salt water
- Ideal for deck tops, caravan roofs and camper vans
- 5 year panel warranty and 20 year cell performance warranty*



80wp - PV Logic Flexi Solar Panel Deck / Roof Top Kit

Suitable for permanent fixing or stand alone use, the 80wp Flexi kit is ideal for battery charging, camping / caravanning, boats and many more applications.



KEY FEATURES

- Super tough and powerful flexible panel
- Crystalline cell max. energy per sq metre
- Full weather sealed system inc. salt water
- Ideal for deck tops, caravan roofs and camper vans
- 2 x Built in shading diode prevents hot spots and panel deterioration
- 2 year panel warranty and 20 year cell performance warranty*



60wp - PV Logic Flexi Solar Panel Deck / Roof Top Kit

Suitable for permanent fixing or stand alone use, the 60wp Flexi kit is ideal for battery charging, camping / caravanning, boats and many more applications. The PV Logic Flexi Roof Top Kit comprises all the essential items to permanently mount a Flexi PV solar panel to the roof or deck of a motorhome, caravan, boat or yacht.



KEY FEATURES

- Super tough and powerful flexible panels
- Crystalline cell for maximum energy per sq metre
- Fully weather sealed system - even against salt water
- Ideal for deck tops, caravan roofs and camper vans
- Built in shading diode prevents hot spots and panel deterioration
- 5 year panel warranty and 20 year cell performance warranty*



*Cell performance warranty states that at 20 years the cell output will be no less than 80% of new performance values - i.e the cell degradation rate will be no greater than 20% in 20 years

10Ah - Twin Battery Charge Controller

This controller is for off-grid solar systems and has the additional functionality that it can charge two batteries simultaneously and can work on both 12v or 24v systems.



NAVIONICS+

NAVIONICS+

KEY FEATURES

- One year of Freshest Data service: daily updates to Nautical Chart, SonarChart™ and Community Edits free for the first year from purchase.
- Facilitates the latest features in chart plotters including Plotter Sync and Autorouting.
- Ability to enhance SonarChart™ with sonar logs.
- A global catalogue from which to choose (downloadable version).
- Available in two sizes - XL9 and Small.

Navionics+ offers the best value and the widest database of marine and lakes content. Most importantly, in addition to Nautical Chart and Community Edits, it gives access to SonarChart™, the 0.5 m HD bathymetry map you can enhance. Available either pre-loaded with Nautical Chart and SonarChart™ or blank for you to download your chosen region.



NAVIONICS UPDATES

NAVIONICS Updates

KEY FEATURES

- Provides all the benefits of Navionics+ as detailed above.
- Pre-loaded or blank cards, ready to be unlocked by a compatible chart.
- Designed for existing Navionics customers wishing to update, or upgrade their chart at a preferential price.
- Option to switch media type, e.g. from CF to MSD.

Navionics Updates allows users to:

- **Get updated charts and upgrade to Navionics+.** Eligible charts are Navionics Silver, Gold and Platinum+, including those bundled with some chartplotters.
 - Also provides customers of other brands the least expensive way to switch to a Navionics compatible chartplotter.
 - Eligible competitor charts include C-Map, Garmin, Lowrance (all must be in SD format).
 - Verify if your old chart qualifies using the regularly updated list at navionics.com/compatibility.
- Update a Navionics+ after Freshest Data expires.



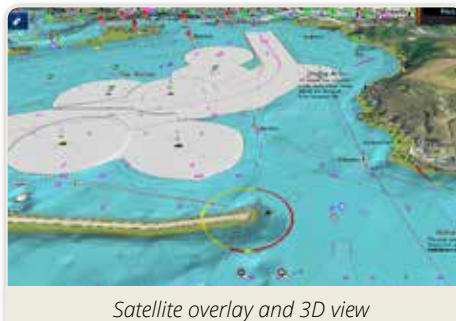
PLATINUM+

Platinum+

KEY FEATURES

- Switch between 2D and 3D.
- Enhance with satellite overlay.
- Panoramic port photos.
- Pilot Books.
- Port Services and Points Of Interest.
- Includes SonarChart™ HD bathymetry map.
- Eligible for one year of Freshest Data daily updates to Nautical Chart, SonarChart™ and Community Edits.

Platinum+ provides exclusive Satellite Overlay, 3D View and Panoramic Pictures along with Navionics+ charts and features: Nautical Chart, SonarChart™, Community Edits and daily updates for one year.



Satellite overlay and 3D view



Panoramic pictures

KEEP YOUR GPS CHARTS UP TO DATE!

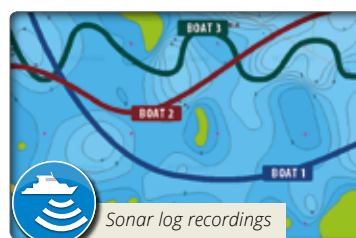
With Freshest Data, Navionics customers enjoy a unique benefit: peace of mind in having the most current charts. We make around 2,000 updates to our Nautical Chart daily by integrating new Hydrographic Office charts, Notices to Mariners, new publications, our own surveys, and reports from users. Plus, several thousand updates are also made to SonarChart™ and Community Edits.

Register online within two months from purchase and get free daily updates for one year.

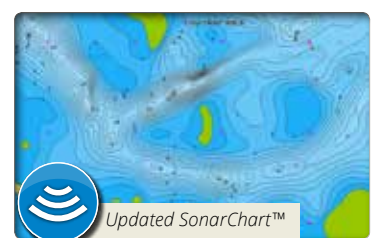


ENHANCE YOUR SONARCHART™ !

Sonar logs recorded with GPS plotters and mobile devices, sent by boaters like you, are continuously integrated by Navionics with existing data to ensure that SonarChart™ becomes more and more precise. You can check the processing status of your logs at navionics.com/sonarchart. You'll be able to enjoy the results on SonarChart™ after about one week on plotter, mobile and PC.



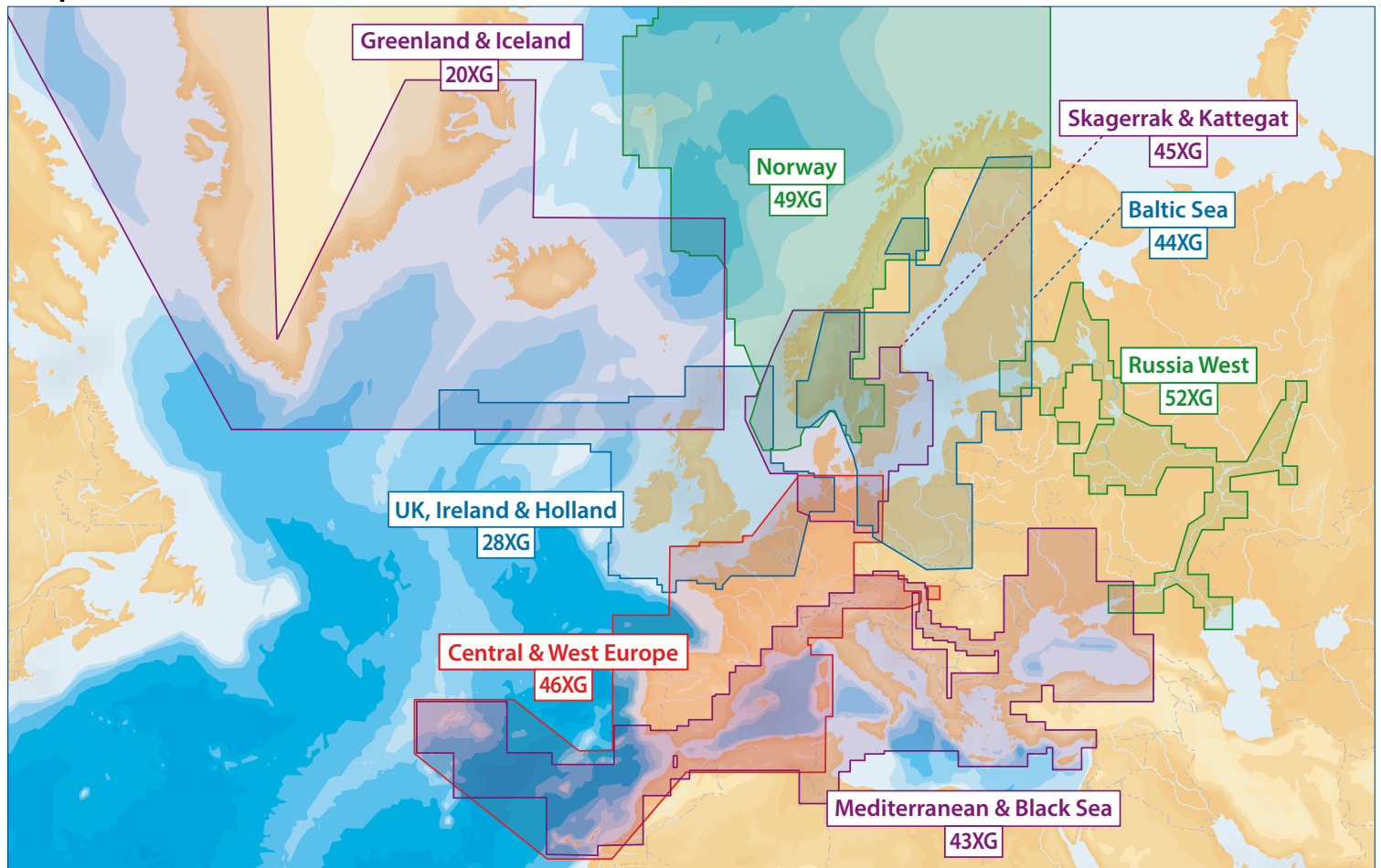
Sonar log recordings



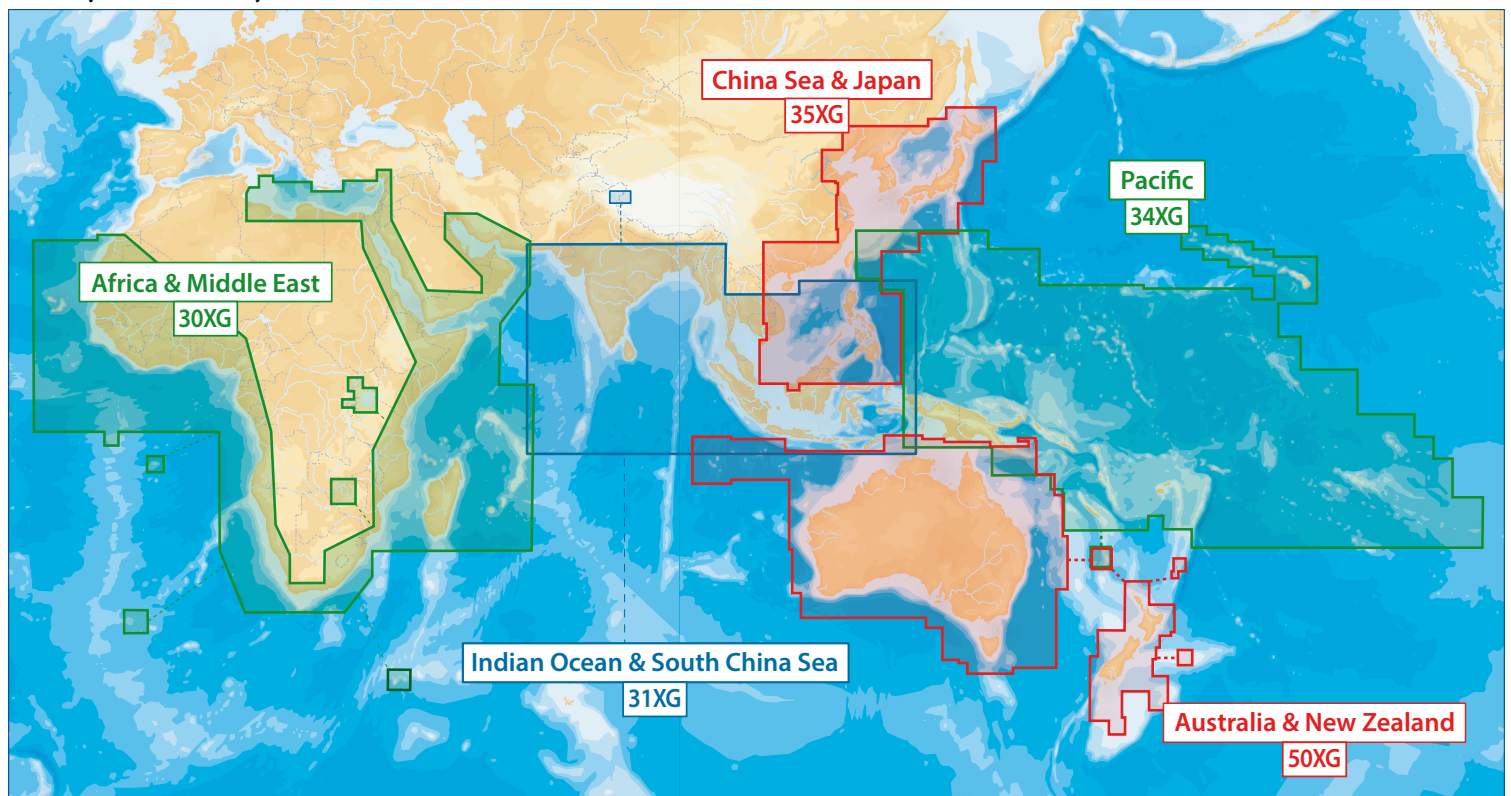
Updated SonarChart™

And now, **SonarChart™ Live**, a free feature of the *Navionics Boating* app, is the most efficient way to enhance SonarChart™ because your sonar logs are automatically sent to Navionics from your mobile. Learn more at navionics.com/sonarchartlive

Europe

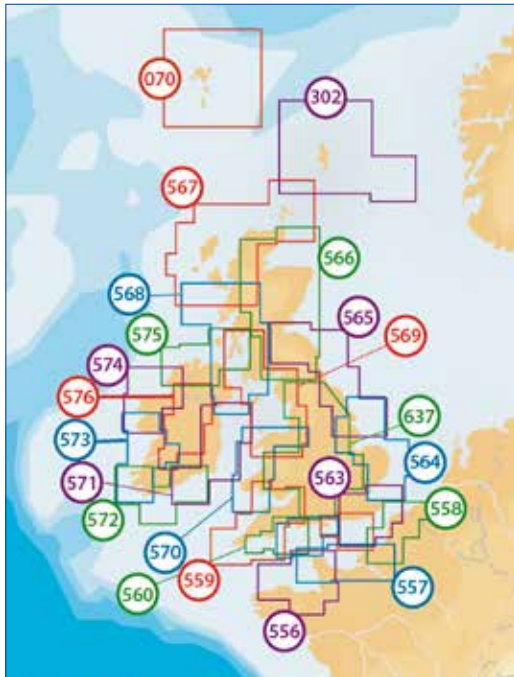


Africa, Middle East, Australasia



NAVIONICS+ SMALL (MARCH 2016)

United Kingdom

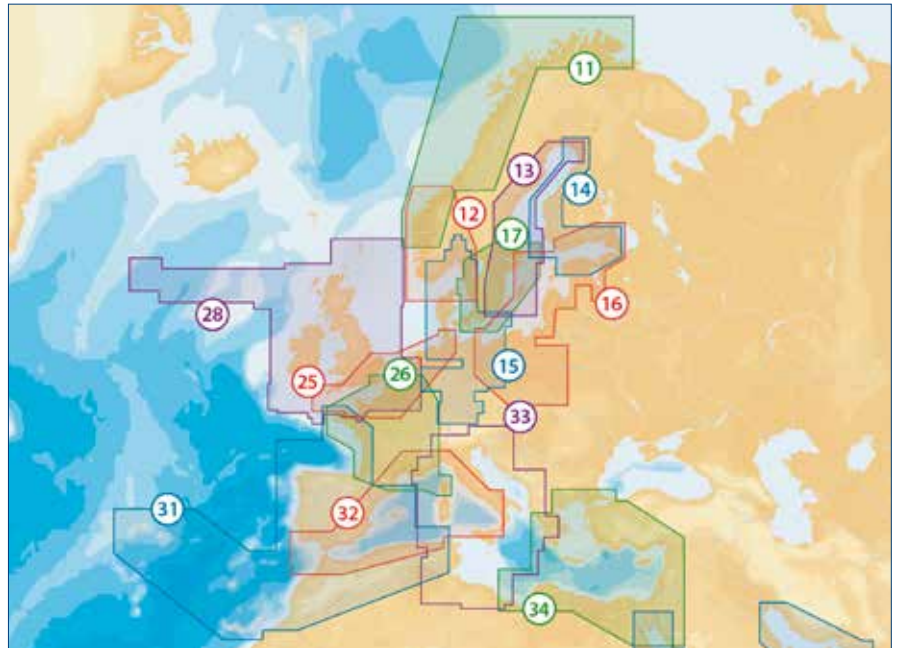


CODE	AREA
070	070S Faeroe Islands
302	5G302S Shetland Islands
556	5G556S2 Ile De Batz-Carentan
557	Jersey-Le Treport
558	St-Valery-Zeebrugge
559	Tenby - Exmouth
560	Falmouth - Weymouth
561	Start Pt-Chichester
562	Keyhaven - Rye Hrb.
563	Littlehampton-Walton
564	Burnham-Scarborough
565	Grimsby - Anstruther
566	Scotland East
567	Scotland North West
568	Scotland West
569	Jura I. - Barmouth
570	Liverpool - Gower
571	Ireland East
572	Ireland South
573	Ireland West
574	Ireland North West
575	Ireland North
576	Shannon - Erne

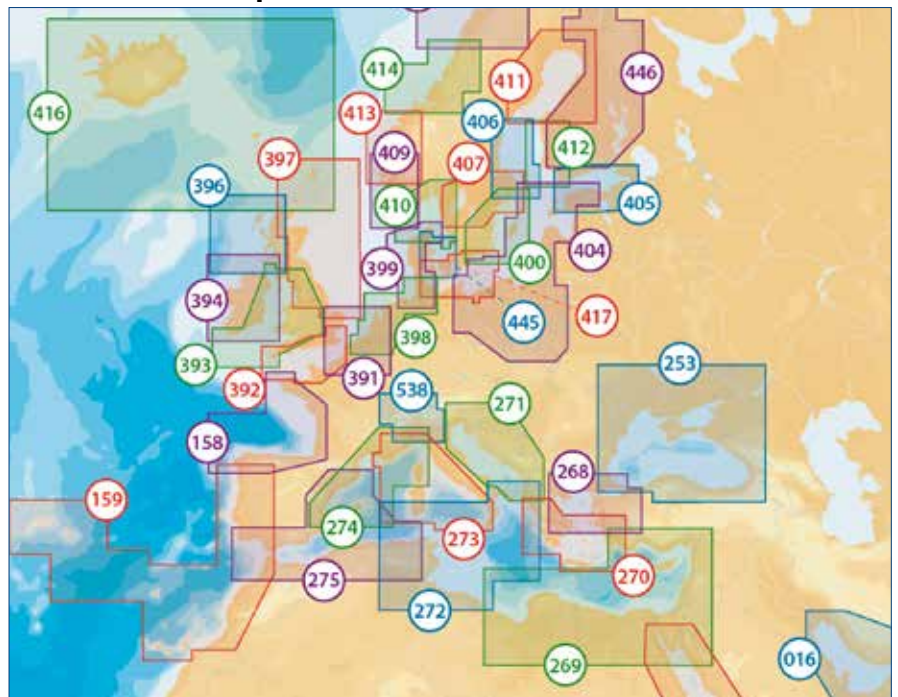
NOTE: This is just a small selection of the coverage areas available from Navionics. Contact us for further information if the area you're looking for is not shown here, or visit navionics.com.

PLATINUM+

Platinum+ XL3 - Europe & Middle East



Platinum+ XL - Europe & Middle East



NAVIGATION PLANNER - PLAN WITH YOUR PC

- Designed specifically for Navionics Charts
- View and copy to your PC
- View SonarChart™
- Create a route with a few mouse clicks
- Uses tidal data for course to steer and optimum departure time
- Create a route/waypoint library to transfer to/from plotter
- Download weather and view forecast conditions from Theyr™*
- Access tide, current and moonrise data,
- Show tidal flow direction and velocity



NEW FOR 2016

- Multiple routes display option
- Improved support for Windows touch-screen tablets
- Supports latest Raymarine GPX route format
- View synchronised weather* and chart tidal data
- Theyr™* weather includes wind, rain, isobars and wave height. Set and view your max. limits for wind and wave in red

Choose NEW NavigationPLANNER+ for all above and

- Connect a compatible GPS to overlay your boat position in real time
- Your PC will then become a back-up to your primary system

*requires subscription from Theyr™

4D

C-MAP 4D is the latest evolution of electronic charting technology, combining award-winning vector chart data with exclusive Dynamic Raster Charts and the ability to view charts in 2D or amazing 3D presentation with high-resolution satellite imagery. Packed with innovative features designed to enhance every cruising, fishing or sailing experience.



KEY FEATURES

- Local and Wide coverage to suit your boating needs and budget
- Ability to add future data segments and features
- 3 Dimensional Chart View
- Satellite Images with 2D and 3D Overlay
- Digital Raster Charts with 2D and 3D Overlay
- Guardian Alarm
- Easy Routing
- Value-Added-Data



MAX

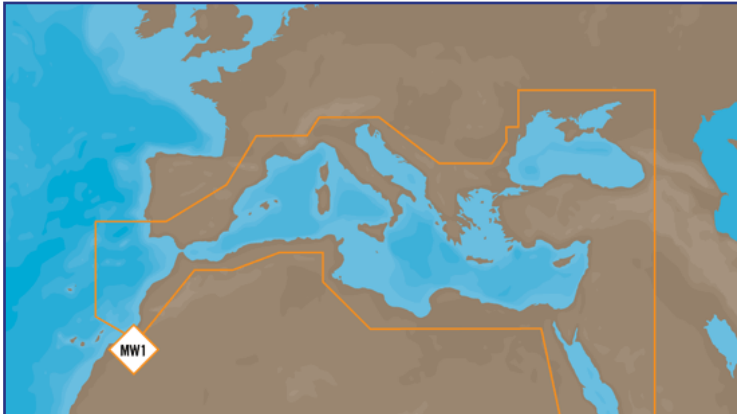
C-MAP MAX electronic charts have been a worldwide standard for years, providing cruisers, sailors and fishermen with the accurate, up-to-date chart data they need to enjoy each day on the water. Still a leading choice of navigators and chartplotter manufacturers around the globe.



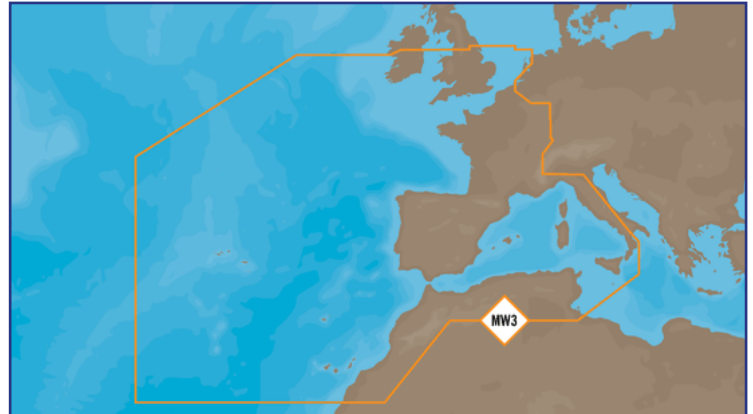
KEY FEATURES

- Updated twice annually to provide all the latest detail and information
- Compatible with dozens of chartplotters
- Extensive coverage of coastal waters, lakes and rivers
- Local, Wide and MegaWide coverage for all charting needs and budgets
- Dynamic Nav aids
- Detailed Harbour Charts
- Dynamic tides and currents projections
- Guardian anti-grounding technology

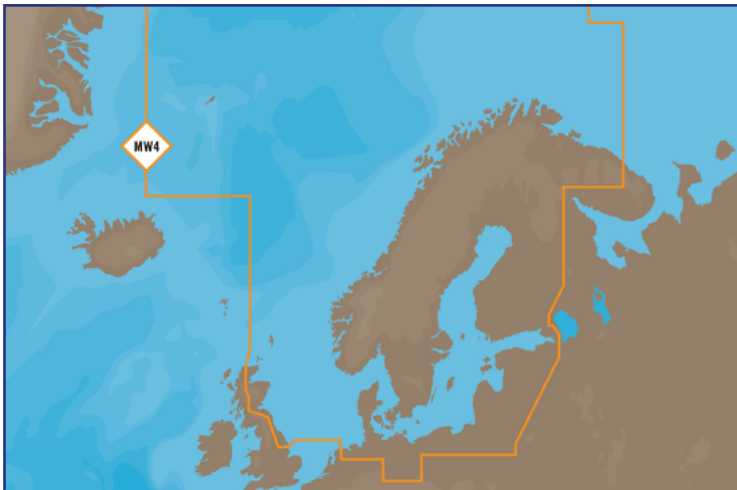
MW1 - Med & Black Sea



MW3 - West Europe (Coast)



MW4 - North & Baltic Seas



MW6 - West Europe (Fresh Waters)



POWER GENERATORS

KIPOR IG Petrol Generators

One of KIPOR's never ending tasks is to produce high quality environmentally friendly generators. Today KIPOR offers digital generator which are considered advance, reliable, and with a high quality output. Silent, portable and reliable power- anywhere Power isn't always available where and when you are working. Take a Kipor portable generator to that far corner instead of running lengthy extension leads. Or rely upon portable power if you need to turn off the main power whilst working.

MODELS AVAILABLE

- **IG770:** Input current -3.04 A, Max. output - 0.7kVA, Tank Capacity -1.55 l
- **IG1000P:** Input current - 3.9 A, Max output - 1 kVA, Tank Capacity -2.6 l
- **IG2000P:** Input current - 7 A, Max. output - 2 kVA, Tank Capacity -3.7 l
- **IG2600P:** Input current - 10 A, Max. output - 2.6 kVA, Tank Capacity -2 l
- **IG2600P/H:** Input current - 10 A, Max. output - 2.6 kVA, Tank Capacity -5 l



Hyundai - Generators

The Hyundai range of leisure inverter generators (commonly known as suitcase generators) are an ideal power solution for the caravan, motorhome and camping enthusiasts. Compact, portable, affordable and quiet, these petrol generators range from 1kW and go up to 3.4kW, which is an impressive power output from generators of this size.

Using pure sine wave technology, these inverter generators are safe to use with your sensitive electronics and half of the models now feature remote and electric key starting methods for maximum convenience. All Hyundai inverter generators are also able to be modified to run off LPG.



1. ELECTRIC START OPTION
2. LPG OPTION

MODELS AVAILABLE

- **HY1000Si:** 1000w inverter generator
- **HY2000Si / SEi:** 2200w inverter generator, also available with remote elec start
- **HY3000Si / SEi:** 2800w inverter generator, also available with remote elec start
- **HY3600SEi:** 3400w inverter generator remote elec start



Rutland 914i - Wind Charger 12/24 Volt

Rutland 914i Wind Charger 12 Volt The Rutland 914i punches well above its size for power, rivalling the claimed outputs of larger turbines owing to its built-in MPPT technology.

This continuously matches the turbine speed and generator to their optimum performance to deliver more ampere hours into your battery and a by-product of this optimised efficiency is a virtually silent wind turbine!



SUITABLE FOR

- Live aboard Cruisers.
- Coastal sailing yachts.
- Inland and narrow boats.
- Versions available:
- 12V
- 24V



Rutland 504 - Wind Charger 12 Volt

The Rutland 504 e-furl is a great choice for wind power charging where portability is key. It's light weight and ease of handling means that you can rapidly have it raised into position and running, generating free power wherever you find yourself.



SUITABLE FOR

- Caravans and Motor-homes
- Remote Locations
- Professional Applications



Aqua2 Adapt PC - Compact 12v Marine PC

The Aqua Adapt PC is a rugged, fanless PC designed specifically for marine navigation and communication applications. It features a powerful Intel i3 processor with 8GB RAM and a 64GB solid state hard drive. Despite its speedy performance, it consumes just 20W and is totally silent. Measures just 17 x 11 x 7cm. Supplied with Windows 10 operating system



KEY FEATURES

- Dual HDMI video outputs
- 5 x USB ports
- 8GB RAM, 64GB SSD
- Built in WiFi and Bluetooth
- Direct 12v DC operation and low power consumption
- No fan to suck in moist salty air



WL510 - Hi Power WiFi Access System

The system has a compact 12v DC below deck 600mW booster/modem and an external 12dBm high gain antenna.

The WL510 modem connects to the PC via a regular RJ45 network cable for plug 'n' play, driver free operation on Windows XP/Vista/7/8, Mac OS X 10.3 (and higher) and LINUX operating systems. It supports 802.11b/g protocols as well as WEP/WPA/ WPA2 encryption. Even if you already have Wi-Fi access you will still want to take advantage of the superior range and speed that this system will offer. Wi-Fi range depends on many factors, we've seen ranges of up to 4-6 miles with this low cost system.

KEY FEATURES

- Ideal for permanent installations and new builds
- Easy to set up and control from any browser via web-based interface
- 600mW Wi-Fi modem and high gain (12dBm) omni-directional antenna
- Industry standard 1in x 14 TPI thread mount
- Supplied with 10m of low loss coax cable
- 1m network cable can be extended with any CAT5 network cable up to 50m
- Requires connection to boat's 12v supply
- Windows XP/Vista/7/8 compatible
- Mac OS X and LINUX compatible



GPS150/USB - DualNav Sensor

Super accurate GPS/GLONASS smart sensor with DualNav technology, a sophisticated algorithm that combines GPS and GLONASS data to offer <1m accuracy. By utilising the industry standard NMEA0183 data format, the GPS150 is ideal for new installations or to replace an old failed GPS, allowing older chart plotters to take advantage of this new technology.

The user can select a variety of different modes and baud rates including TurboNav™ mode which will appeal to racing yachtsmen and performance users where GPS/GLONASS data is output at 10Hz (10 x faster update than normal) and with an interface speed of 115200 baud which is 24 x the speed of normal NMEA data.

KEY FEATURES

- Compact - only 75mm in diameter
- Integral 1"x 14" TPI standard VHF mount
- Mount removable for flush deck mounting
- Ultra tough, waterproof construction
- Configurable 4800, 38400 & 115200 baud NMEA
- Selectable update rates from 1 to 10Hz
- WMS/EGNOS/SBAS enabled for <1m accuracy
- Ultra low 30mA power consumption (at 12V DC)
- 5-30V DC power input
- GPS150USB version with USB connection



INAVConnect - 12v WiFi Router

Easily setup a wireless network on your boat, that is pre-configured and optimised for transferring Routes/WPs between your Raymarine C/E Series plotter or for controlling your Fusion Stereo using the Fusion Link App.



KEY FEATURES

- 12v or 24v DC operation
- Integrates with WL510 long range Wi-Fi Adaptor
- Creates 802.11n wireless network with full WEP/ WPA/WPA2 encrypted password protection
- Preconfigured for Raymarine and Fusion systems
- Easy to install IP54 black box solution

GV30 - AIS/VHF GPS Antenna

Regulations stipulate that all Class B AIS transponders must have a dedicated GPS as well as a VHF antenna or suitable VHF-AIS antenna splitter. The GV30 is a combination VHF/AIS and GPS antenna with twin 10m coax feeds. The cables are terminated with a FME mini connector which makes running the cable easy, as the connector is barely bigger than the 5mm cable. TNC and BNC connectors are included.

KEY FEATURES

- Combination AIS/NHF and GPS antenna
- Specifically tuned to 162MHz
- High gain GPS element
- Mini connectors for easy cable installation
- Standard 1" threaded base for compatibility with a variety of 3rd party mounts
- Under 200mm high for low profile installation



Smartertrack - Navigation Software

Ideal for anyone with a dedicated Navionics Gold, Platinum or Platinum+ chartplotter or is new to electronic charting and wants simple to use PC navigation software with excellent AIS support.

SmarterTrack turns your Windows XP/Vista/7/8 PC into a navigation tool that overlays your position and AIS targets onto the chart. AIS features include colour coded targets, user selectable target labelling, fully configurable CPA and TCPA alarms, visual indication of CPA, AIS targets drawn to scale and more. Programming routes, checking tides, depths or nav-aids on the chart and a host of other navigation tasks can be performed simply and effortlessly.



KEY FEATURES

- NMEA2000 compliant version available
- Weather overlays (GRIB files)
- Transfer route and way-points to your chartplotter
- Optimum departure time capability from tidal data
- Displays all NMEA instrument data with customisable instrument displays
- Full set of configurable alarms
- Display wireless NMEA0183 data from Digital Yacht iAIS, WLN10 & Boatranet

SUPPLIED WITH

CD-ROM, License Voucher and Manual (NMEA2000 version supplied with NMEA2000 to USB interface).

WLN10 & WLN10HS - Wireless NEMA Server

Innovative, cost effective wireless device which creates its own 802.11b+g wireless access point which any other wireless device can connect to, such as a Smartphone, Netbook or Laptop. Connect it to any device or system that has an NMEA0183 output - either 4800 or 38,400 baud and

it'll automatically read the data and transmit it wirelessly to another device via TCP/IP protocol to a suitably compatible application such as SeaPro and Rose Point Coastal Explorer (PC), MacENC (Macs) or iNavX (iPhone, iPad).



KEY FEATURES

- Easy to install IP54 black box solution
- Can be fitted to any AIS unit, instrument system or device with an NMEA 0183 output
- WLN10 - 4800 baud NMEA data rate
- WLN10HS - 38,400 baud NMEA data rate
- Free iAIS App for iPhone, iTouch or iPad

SUPPLIED WITH

1m Power/Data cable, WiFi Antenna, software CD and User Manual

MUX100 - NEMA Multiplexer

With modern AIS receivers and transponders outputting high speed NMEA0183 data at 38400 baud, it is often difficult to connect AIS data and low speed GPS or instrument data at 4800 baud to some chartplotters and/or PCs with just one NMEA 0183 input. With the MUX100, Input 1 accepts AIS data at 38400 baud and Input 2 accepts GPS/instrument data at 4800 baud. All data received on both inputs is then multiplexed and transmitted on Output 1 at 38400 baud.

KEY FEATURES

- Re-transmits high speed GPS data at low speed
- Gives priority to GPS on input 1 but switches to input 2 if position lost on input 1
- Opto isolated inputs and true NMEA differential output capable of driving several devices



SUPPLIED WITH

1m Power/Data cable, WiFi Antenna, software CD and User Manual

Aquawear - Enabling next gen Wearable navigation

Our WLN20 Aqua Wear wireless NMEA gateway is designed to connect your smart phone and other wireless devices to your boat's navigation systems, streaming real time instrument, position and environmental data that can be displayed in a wide variety of Apps and Navigation Software. Featuring two NMEA0183 inputs (38400 and 4800 baud) to allow interfacing with all common marine navigation and instrument systems, the WLN20 is housed in a waterproof and tough enclosure that just requires connection to the boat's 12v or 24v DC supply. With an internal wireless antenna, that creates a "hotspot" with a typical range of 25m, up to 7 wireless devices can connect and receive the NMEA data.



KEY FEATURES

- Wireless NMEA Data server (38400, 4800 baud)
- Reads NMEA0183 data on both ports, multiplexes & transmits wirelessly over 802.11b+g
- Can be fitted to any GPS, Instrument or AIS system that is outputting NMEA 0183 data at 38400 or 4800 baud
- Supports Bi-Directional communication but must be at the 38400 baud rate
- Creates an 802.11b+g wireless access point and transmits data via TCP/UDP link
- TCP allows single device connection, UDP allows multiple devices to receive data
- Fully compatible with many popular Apps and Navigation Software packages
- Easy to install IP67 black box solution

iNAVHub - 12/24v Wireless Hub

iNAVHub combines wireless networking and NMEA data transfer in one easy to install box. Similar to the popular iNavConnect, it creates a wireless network on board the boat that any wireless device can connect to. Once connected; iPhones, iPads, PC's etc, can receive NMEA0183 data wirelessly for use in iNavX and other navigation apps, whilst also sharing the long range internet connection created by Digital Yacht's WL510.

iNAVHub is designed to fully integrate with Digital Yacht's latest WL510 long range Wi-Fi adaptor. Simply plug the WL510 into the dedicated network socket and when you arrive in port and connect to the marina's hotspot, everyone on board will be able to share the connection.



KEY FEATURES

- Easy to install IP54 black box
- All-in-one solution for distributing wireless internet & NMEA data
- Integrates with Digital Yacht's latest WL510 long range Wi-Fi Adaptor
- Includes an NMEA interface that outputs NMEA0183 data wirelessly to multiple devices
- Creates an 802.11n wireless network on-board with full WEP/WPA/WPA2 encrypted password protection
- 5dB detachable antenna

NMEA TO NETWORK ADAPTOR

"A powerful NMEA0183 to Ethernet Gateway for streaming navigation data around your boat's existing wireless or wired network." Wired and Wireless networks are now very common on medium to large leisure boats and once installed are a great way to transfer data to PCs, Macs, phones and tablets.

KEY FEATURES

- 12/24v DC Powered NMEA to Network Server
- Simple solution for distributing NMEA data on existing Ethernet networks
- Allows bi-directional communication at the selected baud rate
- Supports UDP (default) and TCP protocols
- Can be set to get network settings automatically by DHCP (default) or to operate with fixed/static network settings
- Supplied with Windows Configuration Software for initial installation
- Easy to install IP54 black box solution



AIT2000 - Black Box AIS Class B Transponder

The AIT2000 uses the latest AIS Transponder technology to squeeze more performance and interfacing options in to a housing that is half the size of our previous generation transponder. This ultra-compact Class B Transponder has three outputs; NMEA 0183, NMEA 2000 and USB connection, allowing it to work with every AIS compatible chart plotter or software package on the market today. Featuring a remote silence button option, two NMEA 0183 Inputs and Outputs, four status LEDs and rugged vibration-proof mounting brackets, the AIT2000 is the third generation of Digital Yacht AIS transponder and replaces the very popular AIT1000.



KEY FEATURES

- Easy to install black box solution
- Latest generation AIS technology featuring new AIS transponder design
- Ideal for use with existing plotter and radar systems
- Built-in high performance 50 channel GPS receiver (ideal also as a backup GPS)
- USB Interface for simple plug and play connection to a PC or Mac
- Includes N2Net interface and cable for connection to NMEA 2000 network
- 2 x NMEA0183 outputs - one high speed (38,400 baud) with AIS + GPS + multiplexed data and the other 4800 baud for GPS output to DSC VHF Radio
- Comes complete with GPS antenna with integral 1" x 14 TPI thread mount
- Requires VHF antenna or dedicated AIS antenna (available as optional accessory) or splitter (SPL250)
- Remote Silence Switch option
- Supplied with programming software for user programming

AIT1500N2K - Black Box AIS NMEA2000 Transponder

Easy installation utilising an internal GPS antenna brings an AIS NMEA2000 transponder to a new market of smaller boats, tenders, jet-skis and OEM installations. DualNMEA outputs are provided so it can feed a DSC VHF with GPS data as well as a chart plotter. It also features a silence transmit facility so you can mute AIS transmissions but continue to receive AIS traffic. It's waterproof and tough and fits in minutes. A USB connection is available for programming and MAC/PC navigation.



ANT200 & uAIS - USB AIS Smart Antennas

Perfect "all in one" solution for anyone wanting a simple and easy to install AIS receiver. With its NMEA0183 output, the ANT200 is perfect for connecting to any compatible small boat chart plotter, while the uAIS features a 5m USB cable for "plug and play" connection to any PC/MAC running suitable AIS navigation software.

KEY FEATURES

- Integral 1" x 14" TPI thread for fixing to standard VHF mounts
- 5m USB "plug and play" cable connection to a PC (uAIS)
- 10m NMEA0183 cable connection to a plotter (ANT200)
- High performance dual channel AIS receiver
- High speed NMEA output (38,400 baud)

SUPPLIED WITH

5m USB cable, AIS software and User Manual.



AIT 1500 - Black Box AIS Class B Transponder

At last a great quality AIS Class B at a lower price-point and easier installation utilising an internal GPS antenna brings an AIS transponder to a new market of smaller boats, tenders, jet-skis and OEM installations. DualNMEA outputs are provided so it can feed a DSC VHF with GPS data as well as a chart plotter. It also features a silence transmit facility so you can mute AIS transmissions but continue to receive AIS traffic. It's waterproof & tough & fits in minutes. A USB connection is available for programming and MAC/PC navigation.



AIT 3000 - WiFi AIS Class B Transponder & Splitter

Class B AIS transponders have made a remarkable impact on small craft navigation but many potential users or installers are put off by the requirement for yet another VHF antenna. The AIT3000 "Nucleus" Class B transponder changes this. It incorporates not only a full function Class B AIS transponder but also an antenna splitter allowing the main VHF antenna on the boat to be shared with the AIS and VHF.



KEY FEATURES

- Combination Class B AIS transponder with patented ZeroLoss VHF-AIS antenna splitter
- Full connectivity via
- NMEA0183 Dual In/Out Interfaces
- Built in multiplexer for instrument data
- NMEA 2000 output
- USB (PC and MAC)
- Inbuilt WiFi server for tablets & smartphones
- Remote silence switch capability
- Ultra tough, waterproof and compact construction
- FM antenna output
- Supplied with GPS antenna
- Supported range of apps for iOS, Android, PC & MAC

SPL2000 - AIS Antenna Splitter

Digital Yacht's new, zero loss SPL2000 AIS-VHF antenna splitter allows an existing antenna to be used for both AIS and VHF (DSC) and even with an AM/FM radio. Unlike most splitters, it can also be used with a Class B transponder system and it incorporates special circuitry to ensure safe operation of the two transmitting devices.

KEY FEATURES

- Fail safe operation
- Works with all Class B transponders and receivers
- 12v or 24v Operation and low power consumption
- AM-FM radio antenna connection for standard car stereo



NavLink - Nmea2000 To WiFi Server

With more and more equipment now using NMEA 2000 networking, being able to easily connect the network data to mobile devices such as smart phones, tablets and laptops is becoming an important consideration. Navlink converts NMEA2000 data into a wireless data feed that can be received by any mobile wireless device. Using standard NMEA data formats, the WLN2Net is compatible with all software applications that support TCP (single device) or UDP (multiple devices) data transfer.

KEY FEATURES

- Supports Bi-Directional communication for driving an Autopilot
- Free iAIS App for iPhone, iTouch or iPad
- Creates a wireless access point and then transmits data via TCP/UDP link
- Single "plug and play" connection to the NMEA2000 network
- Optional USB connection for providing NMEA2000 data to the boat's computer
- Fully compatible with popular iNavX navigation app for Apple mobile devices



AIS100/AIS100 USB/AIS100 Pro - AIS Receivers

These value priced, entry level AIS receivers are Digital Yacht's most cost effective solution for adding AIS to your boat. Three models are available, all with the same dual frequency receiver for use with existing AIS compatible chart plotters. Connected to an existing VHF antenna via a splitter or to a dedicated AIS antenna, you can receive all AIS targets typically within 20 miles of your boat.



KEY FEATURES

- Low cost entry level AIS receivers
- AIS100 - NMEA0183 output
- AIS100USB - USB output
- AIS100PRO - NMEA0183 and USB output, multiplexed NMEA0183 input
- Requires VHF antenna, dedicated AIS antenna (optional accessory) or splitter
- Easy to install IP54 black box solution

HSC100 - Compass Sensor

Accurate heading data is still a key requirement for marine navigation and the HSC100's fluxgate technology can support many applications including course up and true motion chart display, radar overlay, MARPA/ARPA target tracking and tidal set and drift calculations.



KEY FEATURES

- High Speed (10HZ) NMEA electronic fluxgate compass sensor
- Ideal for use with radar overlay and MARPA target tracking systems
- Industry standard NMEA 0183 "HDG" output • Gimballed to 45°
- New "Rate of Turn" version of the HSC100 now released for Class A transponders (HSC100T)
- 12/24v DC operation with minimal power consumption
- Waterproof to IPx7 and suitable for external mounting on a steel hulled vessels
- Automatic calibration routine and manual compass offset feature
- Additional AD10 heading output for interface to Furuno systems
- LED Status Indicator
- 15m interconnect cable

AISNet - Internet Base Station

AIS base station receiver for use at home or in the office. With the same high performance dual channel AIS receiver as the rest of the Digital Yacht range, AISnet features an ethernet socket so that you can connect it to your broad band router and send AIS data to an online AIS tracking service. There are now a large number of websites which offer a view of AIS equipped vessels on a background chart allowing users to check the position and identity of ships and yachts. If you are close to the coast and you would like to contribute your data to one of these sites, simply register with the company and they will give you an IP address and port number.

KEY FEATURES

- Integrated ethernet network controller for supplying AIS data to AIS websites
- High performance dual channel AIS receiver
- Simple configuration via free setup program
- USB Interface for simple plug and play connection to a PC



AIS Life Guard - AIS Man Overboard Alarm

AIS MOB Alarm designed to work with the new generation of AIS SARTs. Many existing AIS compatible chartplotters don't fully support AIS SARTs, but AIS Life Guard will sound its internal alarm and drive an external alarm. AIS Life Guard will also allow you to test your AIS MOB systems before leaving port. It is compatible with all Digital Yacht AIS receivers and transponders and it is designed to operate on 12v or 24v DC systems.



KEY FEATURES

- World's first dedicated AIS Man Overboard Alarm system
- Listens to AIS data on NMEA0183 Input
- Alarms when AIS SART message 1 and 14 are detected
- Internal 95dB buzzer with option to drive external alarm (not supplied)
- Audible and Visual Alarms
- Push button to silence alarm (short press) and reset alarm (long press)
- Easy to install IP54 black box solution

iAIS - Wireless Tri-Output AIS Receivers

The iAIS is a high performance dual channel AIS receiver with a wireless NMEA interface. This tri-output unit (NMEA0183/USB/WiFi) can drive any device on your boat including your tablet or phone. Connect it to the boat's GPS or instrument system and it will combine and send all of this data to the wireless mobile device as well

Compatible with a large number of Apple and Android Apps, as well as any AIS ready chart plotter with an NMEA0183 input or a PC/MAC running suitable AIS navigation software.



KEY FEATURES

- Tri-output - WiFi, NMEA 0183 and USB
- Integrated 802.11b+g wireless access point
- Fully compatible with iNavX navigation application for Apple mobile devices
- Simple "fit and forget" black box solution
- Requires VHF antenna, dedicated AIS antenna (optional accessory) or splitter

Digital Deep Sea - Introduction

Digital Deep Sea is Digital Yacht's sister division that designs and manufactures products to meet the needs of the fishing, workboat, naval, deep sea, super-yacht and commercial sectors. Digital Deep Sea systems are designed for demanding professional conditions and minimum in service costs, offering great performance and terrific value for the professional mariner.

CLA 1000 - Class A AIS Transponder

A Class A AIS transponder is a mandatory fit on all commercial vessels over 300 tons and is also required on many smaller passenger carrying vessels. The CLA1000 meets all the global approvals and can consequently be fitted on any IMO vessel. It provides an automatic transmission of the vessel's own position, speed and heading to other AIS equipped vessels within VHF range.

It features a large LCD display, which lists all AIS targets within range and can also provide a graphical target plot. All standard IMO specified alarms are supported and the remote break out box provides all of the sensor and NMEA connections for other IMO approved equipment. Measuring just 195mm x 105mm, the CLA1000 is currently one of the world's smallest Class A systems available.

It also incorporates a universal pilot plug which allows quick and easy connection of a PC running electronic chart plotting software, allowing GPS and AIS data to be overlaid onto the chart. Digital Deep Sea have developed their own range of PC programs and accessory cables which allow quick and easy programming of static data into the transponder without the use of the dedicated display.

KEY FEATURES

- Fully approved and MED Wheel Marked Class A AIS transponder
- Full Class A functionality with dedicated controller
- Ultra compact design with 240x128 pixel backlit LCD display
- Automatic transmission of vessel's own position, identity, speed and heading to other AIS equipped vessels within VHF range
- Easy soft key and rotary encoder operation
- Positively identify other AIS targets with name, call sign and MMSI data



- See an overlay of targets on a graphical plot
- Pilot plug for PC connections
- Remote break out box for interfacing with ext alarms, ECS and ECDIS systems
- Inbuilt GPS with GPS antenna supplied

S1000 - AIS SART (Search and Rescue Transponder)

Mandatory fit for live saving apparatus on all vessels over 300GRT. Traditional technology used a radar type device, but new legislation allows an AIS SART to be used with associated performance and cost benefits. AIS SARTs positively identify the casualty and give a regular position update which can be graphically displayed on a Class A MKD, ECDIS or plotter. The S1000 is a fully IMO compliant and approved AIS SART (Wheel Marked) which once activated, will display a target on any Class A or B transponder system or on an AIS receiver. As such it greatly aids recovery of the casualty or life-raft.

KEY FEATURES

- Full IMO Compliant, Wheel Marked AIS SART
- 50 channel GPS receiver built in
- Specialist VHF antenna technology for superior performance
- LED indications for test and activation
- When activated transmits position 8 times per minute
- 96 hour battery life
- Sends SART ACTIVE safety message every 4 minutes
- Easy to change, low cost battery replacement



Pilot Plug Cable - Class A PC USB Connection

Allows Commercial Pilots etc to connect their laptop to a Class A Transponder via its Pilot Plug. The 1.8m cable also allows some Class A transponders to be configured with the static AIS data and I or mandatory voyage data that must be programmed in before starting a passage. Optional 10m extension cable allows you to extend the cable without increasing the USB cable length, which is limited to 5m (sold separately).

KEY FEATURES

- Bidirectional data connection
- Confirms to the IMO SN/Circ.227
- Fully NMEA 0183 compatible (differential RS422)
- Built-in indicator lights flash to show data is being received and transmitted
- Easy plug and play connection to most computers (Windows/Mac/LINUX)



Digital Deep Sea CLB 2000 - Class B Transponder

The perfect solution for all commercial vessels up to 300 tons not mandated to fit a Class A. It uses the latest AIS transponder technology to squeeze more performance and interfacing options into an ultra-compact housing. The three outputs - NMEA 0183, NMEA 2000 and USB allow it to work with every AIS compatible chartplotter or software package on the market today.

KEY FEATURES

- 12v and 24v operation
- Built-in high performance 50 channel GPS receiver (ideal also as a backup GPS)
- Plug & Play USB interface
- Two NMEA 0183 Inputs and Outputs
- High speed NMEA output (38,400 baud) compatible with industry standard plotters
- NMEA2000



PilotLINK - Class A AIS WiFi Interface

PilotLINK connects to the Pilot Plug on a Class A AIS transponder and creates a WiFi navigation network on board the vessel which allows AIS and GPS data from the Class A to be sent directly to any connected mobile devices such as phones or tablets. Compatible with iOS, Android, PC & Mac based systems.

KEY FEATURES

- Creates a wireless access point, typical range 30m
- Supports bi-directional communication for configuring the transponder
- Free iAIS App for iPhone, iTouch or iPad
- Transmits data via TCP/UDP link
- TCP allows single device connection while UDP allows multiple devices to receive the data
- Powered from internal 9v PP3 battery or optional external USB power source



The Onix Series - HD DI

Adapt or be left behind. It's the law of nature. And it's the law of technology. Introducing the next evolution of the all-in-one system: the ONIX Series. Innovative Cross Touch meets powerful built-in sonar and exclusive TriFuel Cartography—to throw the odds squarely in your favour. From targeting your prey to charting your course to navigating treacherous waters, it does it all—effortlessly. Your move, Mother Nature.

Take control of the extreme high-definition XGA LCD Touch Display with multi-gesture support and bright graphics readable in harsh sunlight. Access advanced cartography, save screenshots, sonar recordings and way-points, or even connect a USB device. AutoChart Live™ included.

MODELS AVAILABLE

- **Onix8CI** – 8.4 inch display
- **Onix10CI** – 10 inch display



Helix Series - Fishfinder, Chartplotter

If fishing is in your DNA, there's no such thing as "too early" or "too far." High expectations go with the territory. The new HELIX Series answers the call with an uncompromising, wide-screen colour display. Powerful Side Imaging, Down Imaging and SwitchFire Sonar reveal the lake bottom, while optional GPS mapping shows you the way. Feature for feature, it has what it takes to win the day. Do you? No doubt.

KEY FEATURES

- Side/Down Imaging & DualBeam PLUS with SwitchFire Sonar
- Side/Down Imaging Sonar Freq. (Coverage): 180° coverage / 455kHz ((2) 85° @ -10db)
- DualBeam PLUS Sonar Freq. (Coverage): 200kHz (20° @ -10db) / 83kHz (60° @ -10db)
- Power Output (max.): 500W (RMS); 4000W (PTP)
- Depth Capability: 30.5m (SI/DI) / 183 m (DualBeam PLUS)
- Navionic Gold compatibility

MODELS AVAILABLE

- **5** - Sonar c/w Dual Beam
- **5** - Sonar GPS / Plotter - c/w Dual beam
- **5 DI** - Down Imaging Sonar - c/w Dual beam
- **5 DI** - Down Imaging Sonar / GPS / Plotter c/w Dual beam
- **5 SI** - Side Imaging Sonar / GPS / Plotter c/w Dual beam
- **7 SI GPS** - Side Imaging GPS
- **7 SI GPS KVD** - GPS Combo - Side Imaging
- **7 DI GPS** - Down Imaging Sonar GPS
- **7 SONAR GPS** - Sonar GPS
- **HELIX 7 DI** - Down Imaging Sonar
- **HELIX 7 SONAR** - Sonar
- **HELIX 9 DI GPS** - Down Imaging Sonar GPS
- **HELIX 9 SI GPS KVD**
- **HELIX 9 SI GPS** - Side Imaging GPS
- **HELIX 10 SONAR GPS** - Sonar GPS
- **HELIX 10 DI GPS** - Down Imaging Sonar GPS
- **HELIX 10 SI GPS KVD**
- **HELIX 10 SI GPS** - Side Imaging GPS
- **HELIX 12 CHIRP GPS**
- **HELIX 12 CHIRP DI GPS**
- **HELIX 12 CHIRP SI GPS KVD**
- **HELIX 12 CHIRP SI GPS** - Side Imaging GPS



HELIX 7



HELIX 5



Fishin' Buddy

The Fishin' Buddy® is the easiest to use fishfinder ever. For most anglers, all you'll ever need to do is power on and fish! The Fishin' Buddy® automatically determines depth and makes adjustments to keep the bottom and fish visible on the display. You can use it on your boat, your buddy's boat, a dock, or even a float tube.

KEY FEATURES

- 4" (10.2 cm) Diagonal 4 Level Grayscale LCD; 160V x 128H pixels
- Sonar: Single Beam Down
- Sonar Coverage / Frequency: 34° @ -10db / 200 KHZ
- Power Output: 125W (RMS); 1000W (PTP)
- Depth Capability: 73 m Down & 37 m Side
- Water Temperature Included
- Size: W 10.7 x H 14.6 x D 6.9 cm
- Portable Clamp Mount /
- Waterproof
- 61 cm Fixed Pole Transducer Mount
- Power Input: 6 x AA Batteries



MODELS AVAILABLE

- **197c** - Dual beam + Sidefinder with Clamp mount
- **197c Di** - Dual beam + Sidefinder with Clamp mount

PiranhaMax - 197c Di

The PiranhaMAX 197c DI features a 256 colour 320V X 240H, 3.5" display with 1600 watts PTP power output with Down Imaging and Dual Frequency sonar. The design also allows drop-in replacement for competitive in-dash models. Down Imaging Sonar -- Get a fish-eye's view of what's happening below your boat. Incredible images are created with High-frequency sound waves.

KEY FEATURES

- 3.5" (8.9 cm) Diagonal 256 colour LCD; 320V x 240H pixels
- Dual Beam Sonar
- Sonar Freq. (Coverage): 200kHz (28° @ -10db) / 455kHz (16° @ -10db)
- Power Output (max.): 300W (RMS); 2400W (PTP)
- Depth Capability: 183 m
- Tilt & Swivel Mounting



Clipper Wireless Wind

The Clipper wireless wind is supplied with a wireless masthead transmitter, a base unit and a Clipper Wind display unit. The wireless masthead transmitter is powered by an internal battery which is charged from ambient light using a small solar panel. A few dull days will not affect performance. When fully charged, it is capable of two thousand hours of full operation in total darkness. The masthead transmitter sends data wirelessly to the base unit, which is powered by the vessel's 12 Volt supply, the base unit receives wind speed and direction data from the masthead transmitter and sends it to the Clipper Wind display or any other compatible NMEA display unit.

KEY FEATURES

- Wireless masterhead transmitter
- NMEA 0183 output sentence MWV
- 9 levels of display backlighting
- Wind speed and direction
- Solar powered



Clipper Depth System

KEY FEATURES

- 40mm high digits
- Depth below transducer / below keel / below surface
- Deep and shallow alarms
- User selectable Feet or Metres.
- Intelligent gain control + manual override
- Selectable display and depth averaging rate
- Indicators for Depth trend, No Echo
- High transmit power
- Output for repeater
- Consumption 20mA + 25Ma for backlight (max)



Clipper Wind System

KEY FEATURES

- Supply voltage Nominal 12v DC
- Consumption, 50mA+ (25mA for display illumination max)
- NMEA 0183 output sentence MWV
- Keypad adjustment of masthead alignment
- 7 levels of display backlighting
- Display case size 110 x 110mm
- Depth behind panel 30mm
- Anemometer head 210 x 140mm



Clipper Speed & Distance



KEY FEATURES

- 40mm high digits
- Speed (Knots/ m.p.h.)
- Trip Distance (N.Miles / Miles)
- Total Distance (N.Miles / Miles)
- Trend indicator shows acceleration / deceleration
- Selectable speed averaging
- Tactile keypad
- NMEA 0183 output VHW & VLW



Clipper Duet System

KEY FEATURES

- Depth Sounder in feet and metres.
- Shallow Alarm and Keel Offset.
- Complete with well proven Transducers.
- Speed in MPH, Knots and Km/H.
- Trip and Total Distance in Miles, Nautical Miles and Kilometres.
- Speed Limit Alarm



Clipper GPS Repeater



KEY FEATURES

- Standard 110mm case
- Super larger high contrast LCD
- Four instantly accessible display screens
- Compatible with most GPS receivers - standard NMEA 0183 interface requires sentences RMB and RMC



Easy Navtex

KEY FEATURES

- Power save auto timer on backlight
- Signal quality indicator and message error counter
- Display size (LxHxD): 15.0 x 11.2 x 4.2 cm
- Supply voltage nominal 12V
- Consumption 50mA @ 12V (100mA with backlight)
- Active micro antenna: H-195mm & 7m cable



AIS Plotter

KEY FEATURES

- Ranges 0.125, 0.25, 0.5, 1, 2, 4, 8, 16 and 32 Nautical Miles
- Receives class A, B and SART AIS transmissions
- 161.975 and 162.025 MHZ operation
- Uses standard NMEA0183 GPS input
- High contrast display with white backlight
- Dimensions: W 15.0 x H 11.2 x D 4.2 cm



BM1 - Battery Monitor

KEY FEATURES

- Supply Voltage: 8 - 16 Volts DC
- Supply Current: 1.5 millamps
- Battery Capacities: 5 - 600 AMP Hrs.
- BM-1 - Load/Charge current (Max.): 100A/100A Shunt : Standard 50 millivolt @ 100A
- BM-2 - Load/Charge current (Max.): 199A/199A Shunt : Standard 50 millivolt @ 200A



BM-Compact - Battery Monitor

KEY FEATURES

- Compact size 125 x 62 x 23mm with high contrast LCD
- Supply current 1.5 millamps
- Battery capacities 5 - 600 AMP hour
- Load current 100 AMPS Maximum
- Supplied with precision shunt and prefabricated cables for simple DIY installation.



Energy AGM - Deep Cycle Battery

The AGM range has very low internal resistance making them particularly suitable for high current discharge applications such as for inverters, thrusters and winches as well as engine starting.

MODELS AVAILABLE

- 6V 240Ah
- 12V 8/14/22/38/60/66/90/110/130/165/220 Ah



Energy Quattro - Inverter / Charger

The Quattro can be connected to two independent AC sources, for example shore-side power and a generator, or two generators. The Quattro will automatically connect to the active source.

KEY FEATURES

- Two AC Outputs
- Virtually unlimited power thanks to parallel operation
- Three phase capability
- PowerControl – Dealing with limited generator, shore-side or grid power
- PowerAssist – Boosting shore or generator power
- Solar energy: AC power available even during a grid failure
- System configuring has never been easier



MODELS AVAILABLE

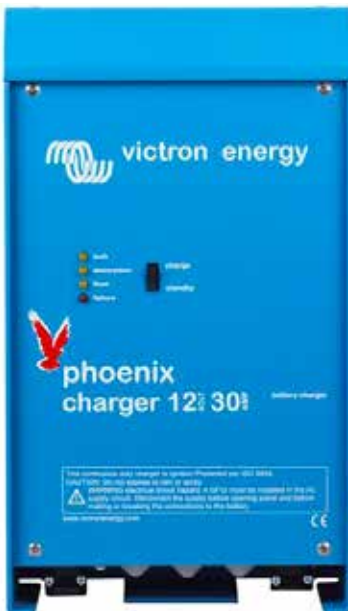
- 12/3000/120
- 24/5000/120
- 24/5000/120
- 12/5000/220
- 24/3000/70
- 24/8000/200

Phoenix - 12/24v Charger

The Phoenix charger features a microprocessor controlled adaptive battery management system that can be pre-set to suit different types of batteries. The adaptive feature will automatically optimise the charge process relative to the way the battery is being used. The inverter is automatically switched off as soon as the 230 VAC mains, shore or generator voltage is available.

The 230 VAC loads are instantly supplied with power by the mains, from the shore, or the generator. The charger automatically charges the batteries. In the event of disconnection from the mains, the shore or the generator voltage, the inverter section of the combined unit automatically takes over the supply of 230 VAC to any equipment you have connected to the output of the Multi.

This takes place so quickly that computers and electronic clocks continue to function without any disruption.



MODELS AVAILABLE

- 12V 30/50A
- 24V 16/25A

Gel Deep Cycle Batteries - 12v

Sealed (VRLA) Gel batteries - Here the electrolyte is immobilized as gel. Gel batteries in general have a longer service life and better cycle capacity than AGM batteries. The GEL range of batteries offer best deep cycle durability and overall longer life. The use of high purity materials and lead calcium grids ensure that GEL products have particularly low self discharge so that they will not go flat during long periods without charge.

GEL batteries are supplied with M8 drilled, flat copper terminals ensuring best possible connection contact and eliminating the need for battery terminals. The batteries are compliant with both CE and UL specifications in ABS fireproof containers and come with Victron's 2 year world-wide warranty.

KEY FEATURES

- VRLA technology - Maintenance free for life. Longer service life and better cycle capacity than AGM batteries.
- Low Self-discharge - Victron VRLA batteries can be stored during up to a year without recharging, if kept under cool conditions.
- Exceptional Deep Discharge Recovery
- Design life 12 years



MODELS AVAILABLE

- 60Ah/66Ah/90Ah/110Ah/130Ah/165Ah/220Ah

Phoenix - Inverter 12/24V

Pure sinewave output, high peak power and high efficiency. Combined high frequency and line frequency technologies ensure the best of both worlds. Models range from 150VA to 3000VA per module.

Scalable: up to six Phoenix Inverters 3000 can be paralleled in single phase, split phase and three phase configuration.



MODELS AVAILABLE

- 12V 180/350/800/1200/1600/2000/3000W
- 24V 180/350/800/1200/1600/2000/3000W



Blue Power - IP67 / IP65 Charger

Completely encapsulated: waterproof, shockproof and ignition protected. Water, oil or dirt will not damage the Blue Power IP65/67 charger. The casing is made of cast aluminium and the electronics are moulded in resin. The highest efficiency ever! Setting a new industry standard: with 92% efficiency or better, these chargers waste three to four times less heat. And once the battery is fully charged, power consumption reduces to less than a Watt, some five to ten times better than the industry standard.

KEY FEATURES

- Completely encapsulated: waterproof, shockproof and ignition protected
- Aluminium chassis (Blue RAL 5012)
- Battery connection: 1.5m black and red cable
- Protection: Battery reverse polarity (fuse), Output short circuit, Over temperature
- IP65/67 Microprocessor controlled Battery Charger
- Input: 230VAC/45-65Hz1 output



SmartBank

SmartBank Advanced is a split charging system that manages all batteries and all charging sources on your boat. For example, it will manage charge from the alternator and how it reaches the engine and domestic batteries. At the same time, the system will also ensure that power from your solar panel reaches all batteries on board. SmartBank Advanced is controlled by the Merlin SmartGauge Battery Monitor to give you ultimate control and knowledge over your battery system



**HOT
PRODUCT**

KEY FEATURES

- All the features of SmartGauge Battery Monitor
- Manages All charge sources on board (eg alternator, battery charger, solar panel, wind turbine etc) – you'll never need another split charging device
- Available for two or three battery bank systems, 12 and 24V DC.
- Zero voltage drop – SmartBank Advanced does not introduce charging losses
- Allows you to mix batteries of different sizes (eg a 75Ah engine start battery and 500Ah domestic). Suitable for battery banks from 50 – 2000Ah.
- Adjustable connect and disconnect voltages.

Kisae - Inverter 12v

Merlin inverters simply and silently convert 12V DC battery power to 230V AC mains electricity. Developing a Pure Sinewave they are suitable for use with all appliances including sensitive professional CCTV, radio and audio/visual equipment.

Protected against overload, overheat, short-circuit, low battery shut-off & high battery voltage. Their output is clean with a Total Harmonic Distortion (THD) of less than 3% (better than normal mains power).

Each inverter is continuously rated at up to 25°C to ensure continuous operation even at full power. Each inverter uses convective (non-fan assisted) cooling at low power and thermostatic fan cooling at higher outputs/temperatures.

Heavy duty DC connection hardware is provided for resistance free connection to your battery system. Each inverter in the range has also been independently tested and complies with the requirements of the European 'e-mark'.



MODELS AVAILABLE • 400W • 1000W • 2000W

AbSo 4 Stage - Battery Charger 12v / 12v

Optimum charging and maintenance for your deep cycle batteries. Multistage battery chargers ensure that your batteries are charged the way battery manufacturers recommend. Small footprint, extremely compact design. Ideal chargers for boaters and RV'ers that do dry camping. Can be set for gel, flooded, AGM and lithium batteries.



MODELS AVAILABLE

- 12V 20/40/60A
- 24V 30A

ABSO Combi - Inverter/Chargers

The Merlin range of AbSo Combi Inverter/Chargers combines the benefits of a Sinewave Inverter and a 4 Stage Battery Charger. Fully automatic in operation, AbSo inverter/chargers are easier to use, install and are significantly more cost effective than inverter and charger 'separates'.

Pure Sinewave Output—ensures interference free operation with all electrical appliances. 4 Stage Smart Battery Charger—By combining an inverter and a charger you are not compromising quality of battery charge. The charger within AbSo units is based on the same technology as the AbSo stand-alone units.

Fast Transfer Switch—switching between inverter and external AC power takes less than 30 milliseconds. This is fast enough to keep most PC's alive and clocks on microwaves or audio visual equipment operating. The transfer between external AC power and inverter power is automatic or can be controlled manually using the unit's front control panel. The transfer switch is rated for systems up to 30 amps AC (7kW).

Built In Control Panel—built in to the front of the unit to allow set up, monitoring and control. Displays battery voltage and output wattage when in use.



**SEEN IT
FOR LESS**
We won't be
beaten on price!

MODELS AVAILABLE

- 12v/1000W/40A
- 12v/2000W/55

M Power - Remote Panel

Designed for use with the 700/1400w M-Power Inverters, the remote panel allows you to conveniently mount your inverter in your engine room/battery compartment and control it remotely. Supplied with 25' (8m) of cable, it simply plugs into the remote jack on the bottom of the inverter.

The panel allows simple switching on/off and a status lamp indicates normal operation or fault. An option Ignition Connection can be made to the remote panel. When connected, the inverter will be automatically switched off when the engine is stopped. This prevents inverters being left on accidentally – useful for hire fleets and charter boats.



SmartGauge - Battery Monitor

SmartGauge is the most accurate battery monitor currently available today. Conventional battery monitors use a Current Measurement Shunt to 'count' amp hours in/out of a battery. The problem is that an amp hour changes according to temperature, discharge rate, charge rate and condition of the batteries. This means that conventional monitors run out of synchronisation and after a time can display misleading information.

**HOT
PRODUCT**



Mass Sine - 12/24V Inverter

Mass sine wave inverters are designed for the toughest conditions for professional, semi-professional and recreational purposes. Even under the most extreme conditions the products from the Mass series operate faultlessly, giving you round-the-clock output when necessary.

The sustainability and technologies that underpin the Mass concept have long been proven in practice. With an MTBF of 280,000 hours at full capacity and 24/7 use, the Mass products are ideal for the toughest tasks and any situation that requires a reliable power supply. You can always rely on their proven and technically advanced components.



MODELS AVAILABLE

- 12V 800/1200/2000W
- 24V 800/1500/2500/5000W

AC Master - Sine Wave Inverter

With a compact, lightweight and silent AC Master you can easily convert the voltage of a 12 or 24 V battery into 230 V/50 Hz AC current the same way you would at home or work.

From microwave to hair-dryer, DVD player to electrical tools, laptop to flatscreen; the pure sine wave preserves your equipment without disruption, humming or lines on the TV screen, while ensuring a longer lifespan of all connected equipment and saving you the costs of all those adapters.

MODELS AVAILABLE

- 12V 300/500W
- 24V 300/500W



AGM Batteries - 12v

In AGM batteries, the electrolyte (mixture of water and sulphuric acid) is largely absorbed in glass fibre. This type of battery is entirely maintenance-free and there is no gas formation with normal use. Not requiring any ventilation, these batteries can be installed anywhere. Their construction gives a very fast discharge at very high currents so AGM batteries are ideal for systems that require high currents (for instance when starting an engine). The battery poles can be unscrewed and this type of battery can be combined with every standard battery terminal.

KEY FEATURES

- Ideal universal battery.
- Excellent starter function.
- Perfect upgrade for wet lead acid batteries.
- Same initial power surge in an
- AGM 12/90 Ah as 180 Ah wet lead-acid battery.
- Glass-fibre technology ensures low internal resistance.
- Use of thicker plates allows deep discharging.
- Also for cyclical use.
- Two-year warranty
- Models available:
 - 12V 55/70/90/130/160/225/270 Ah
 - Slimline 12V 150/185 Ah



ChargeMaster 12/24V - Battery Charger

Make the most of your batteries with the ChargeMaster, plugging in and charging anywhere in the world. Mastervolt's ChargeMaster guarantees fast and complete charging of your batteries no matter where you are.

The ChargeMaster can charge multiple battery banks simultaneously thanks to its combined functionality. Moreover, all ChargeMasters can be easily connected to a MasterBus network with only one cable and one connection. You also have the option of central, local or remote monitoring, configuration and control of your system. The ChargeMaster is available in various models to guarantee you the ideal battery charger for any situation and demand.

MODELS AVAILABLE

- 12V 10A Single Output
- 12V 15A 2 Outputs
- 12V 24/35/50/70/100A 3 Outputs
- 24V 6A Single Output
- 24V 12/20/30/40/60/80/100A 3 Outputs



Mass Combi 12/24V - Chargers/Inverter

The Mastervolt Mass Combi combines the best of both worlds, with an advanced battery charger and silent inverter rolled into one compact device. It is ideal for most boats, from sloops to 16-metre yachts, as well as for heavy mobile applications (the Mass Combi is E-mark certified).



MODELS AVAILABLE

- 12v/1200W/60A
- 12v/2500W/100A
- 12v/4000W/200A
- 24v/1200W/35A
- 24v/2000W/60A
- 24v/4000W/120A
- 12v/1200w/60A
- Ultra24v/3500w/100A

Masterview Easy - Remote Panel

This touch-screen control panel is easy to read and operate. The grey button turns the display on or off or locks it, while all other functions can be controlled using the touch-screen. The first of three control levels provides a short system overview with all the information you may need on a daily basis. The product overview screen shows detailed information. The favourites screen can be custom designed to meet your specific needs for information and control. The MasterBus cable is used for data transfer and as a power supply for the display.



IC-M25EURO - Compact Buoyant Hand-held VHF Radio

Great features mixed with style are the traits of Icom's new IC-M25 buoyant marine VHF radio which floats and flashes when dropped into the water. Sporting an elegant slim design, this new model has the lightest body in the market for a floating VHF radio....just 220g. New for an Icom, this new radio has a tidy USB connector for convenient charging from a variety of electronic devices!

KEY FEATURES

- IPX7 waterproof construction (1m depth of water for 30 minutes)
- 4-step battery life indicator
- Dual/Tri-watch functions
- Instant access to Ch 16 or programmable call channel
- Quick channel selection with the Favourite channel function
- Monitor function for noise squelch control with VOL/SQL button
- Auto scan function
- LCD auto backlighting
- AquaQuake draining function



IC-M91D - Buoyant Hand-held DSC VHF Radio with GPS

The world's first active noise cancelling hand-held with built-in DSC and GPS. The IC-M91D features a new soft-key user interface and advanced safety features including internal GPS, Class D DSC, and built-in compass and navigation functions.

KEY FEATURES

- Built in DSC and GPS
- Active noise cancelling technology reduces background noise by up to 90%
- High definition dot matrix display
- Icom Marine Family User Interface provides simple operation
- Way-point/compass function "Float 'n' Flash" - the LCD, keypad and distress button with flash when IC-M91D comes into contact with water
- 700mW Load Internal Speaker
- Aquaquake draining function provides clear audio
- Waterproof construction equivalent to IPX7 (1m depth for 30 minutes)



IC-M35 - Buoyant Hand-held VHF Radio

Imagine a radio smart enough to adjust its volume level to account for the surrounding noise level. Icom's IC-M35 buoyant VHF marine hand-held does just that with its Clear Voice Boost technology. This measures the ambient sound pressure level so that during a sudden burst of noise the IC-M35 not only automatically adjusts the volume but also the transmit level as well so your conversation is sent and received as clearly as possible no matter how noisy the background is. The inbuilt noise cancelling microphone further enhances the audio quality.

KEY FEATURES

- 6W output power
- Buoyant and waterproof to IPX7
- Clear Voice Boost override button
- Up to 8 hours use on a single charge
- Optional waterproof speaker microphone

SUPPLIED WITH

Li-ion battery pack, charger, belt clip and lanyard.



IC-M73 & IC-M73 Plus - Hand-held VHF Radio

The IC-M73EURO and IC-M73PLUS are Icom's next generation of hand-held transceiver for marine professionals or anyone else who insists on the best. Both models are cosmetically the same, retaining the same durable and rugged body and advanced waterproof protection (1.5m depth for 30 minutes, equivalent to IPX8 rating).

KEY FEATURES

- Last Call Voice Recording (only Euro Plus)
- Active Noise Cancelling Technology (only Euro Plus)
- Bass Boost Function (only Euro Plus)
- Up to 18 hours battery life on a 5-5-90 duty cycle
- 700mW Loud Audio
- 6W RF Output Power
- IPX8 Advanced Waterproofing
- Slim, Hourglass Body, Wide Viewing Angle LCD
- AquaQuake water draining function

SUPPLIED WITH

Battery pack, rapid charger, AC adapter, belt clip and hand strap.



MA-500TR - CLS B AIS Transponder

Designed for non-SOLAS vessels such as pleasure craft and fishing boats, the MA-500TR AIS transponder not only receives information from AIS vessels within range, it also transmits your vessel's information as well, so you will be seen by other vessels. It features a full dot-matrix display and visually shows real-time vessel traffic information.

The MA-500TR can operate as a stand alone unit or it can be connected via NMEA to a PC or compatible chartplotters, radars etc allowing AIS data to be overlayed in real time onto chart and radar displays. It can also be integrated with the Icom IC-M505 and IC-M603 fixed VHF radios which allows you to send DSC individual calls to a selected vessel instantly without the need to manually enter the vessel's MMSI number (requires firmware upgrade).



KEY FEATURES

- Dual channel receive capability
- 3 lines of NMEA0183 Input/Output
- IPX7 waterproof protection - 1 metre depth for 30 minutes
- Features collision-risk management functions including CPA (Closest Point of Approach), TCPA (Time to CPA), Target list and dangerous list and collision alarm
- External alarm connection

SUPPLIED WITH

Comes complete with the MXG-5000 GPS

MXA-5000 - Dual CHNL AIS REC

This black box dual channel AIS receiver allows boat owners to receive AIS info (both Class A and Class B signals) on two channels simultaneously and output the information onto compatible PCs, combi displays, chartplotters or radars, aiding navigation and collision avoidance.



KEY FEATURES

- Dual channel receive capability
- 3 lines of NMEA0183 Input/Output
- IPX7 waterproof protection - 1 metre depth for 30 minutes
- Features collision-risk management functions including CPA (Closest Point of Approach), TCPA (Time to CPA), Target list and dangerous list and collision alarm
- External alarm connection

IC-M323 & M323 G - Fixed DSC VHF Radio

The entry-level IC-M323 VHF/DSC transceiver brings exceptional features at a entry level price. It features the Icom Marine Family User Interface with intuitive "soft-keys" permitting faster access to radio functions. A rotary selector and directional keypad provides intuitive operation.

When connected to an external GPS receiver, current position and time are shown on the display. When receiving DSC information from another vessel, the IC-M323 can transfer it to a navigational device via NMEA 0183 connectivity.



KEY FEATURES

- Waterproof to IPX7
- AquaQuake water draining
- Function
- MarineCommander compatible
- Can be integrated with MA-500TR
- Class B AIS Transponder
- M323G - version with GPS built-in

IC-M400BB - Black Box DSC VHF Radio

The IC-M400BB's black box configuration allows the transceiver unit to be fitted out of sight, with all function control including DSC operation made from the HM-195B COMMANDMIC™ supplied. The IC-40088 uses the Icom Marine Family User Interface for simple, intuitive operation.

Connect the optional MA-500TR Class B AIS transponder and the AIS target call function allows you to set up an individual DSC call from the MA-500TR.



SEEN IT FOR LESS
We won't be beaten on price!

KEY FEATURES

- MarineCommander™ compatible
- AquaQuake™ water draining function
- IPX7 waterproof protection
- Inbuilt 10W amplifier increases audio output from external speaker
- Public Address and Foghorn functions
- HM-195CMI Dual station option available

SUPPLIED WITH

Black box transceiver, HM-105B Commandmic, power cable

IC-M506 - VHF/DSC Radio with NMEA 2000

The IC-M506 is packed full of features including NMEA2000 connectivity, 'Last Call' voice recording function, 'Active Noise Cancelling' technology plus Icom's new intuitive menu-driven user interface and large dot matrix display making it really easy to use. When connected to an external hailer horn, you can talk to people on the deck or shore and can hear people's reply via the hailer speaker. Horn and RX hailer functions are also available.



KEY FEATURES

- NMEA 2000™Connectivity
- Last Call Voice Recording
- Active Noise Cancelling
- Intuitive User Interface
- Optional COMMANDMIC™
- IPX8 Waterproofing
- 25W Two-Way Hailer

IC-M423G - Fixed DSC VHF Radio

The IC-M423G fixed mount VHF/DSC includes an integrated GPS Receiver which allows current position and time to be used for DSC calls. This radio also has a striking new white backlight LCD which improves visibility, along with a smart looking new HM-205B Speaker-microphone which has a large 45mm diameter speaker.



KEY FEATURES

- Built-in GPS Receiver
- Simplifies Installation
- White Backlight LCD
- Optional HM-195GB/GW COMMANDMIC, with White Backlight LCD
- Active Noise Cancelling Technology reduces background noise by up to 90%
- Intuitive User Interface
- 10W Loud Audio, Public Address and Foghorn Capability
- Built-in Class D DSC capability
- Waterproof construction equivalent to IPX7 (1m depth for 30 minutes)

HM-195B COMMANDMIC - Full Function Remote Fisticmic

The HM-195 COMMANDMIC allows you to use the IC-M423 from a separate cabin or tower up to 18.3m (60ft) away from the IC-M423.

All functions of the IC-M423, including power switch, distress call, DSC, and PA functions can be controlled from the COMMANDMIC. The COMMANDMIC can also be used as an intercom with the IC-M423.



KEY FEATURES

- IPX7 Submersible Protection
- Class D DSC full control capability
- DSC "Distress" button on the back of the unit
- Large 45mm speaker for superior audio
- Black and white versions available.
- Also compatible with IC-M400BB and IC-M506

IC-M802 - SSB Transceiver

The IC-M802 marine single-sideband (SSB) transceiver is available for customers who operate or sail under a non EU flag.

It's a marine SSB which includes Digital Selective Calling (DSC) for automated ship-to-ship and ship-to-shore messaging that doubles as a powerful MF/HF radio transceiver, and triples as an e-mail conduit for wireless computer-to-computer connections. Digital Signal Processing (DSP) virtually eliminates noise and interference.



KEY FEATURES

- 150W (PEP) output
- Wide band receive coverage (0.5 - 29.9999MHz)
- Pin-drop clear voice reception
- Digital processing improves data efficiency
- Industry standard 110mm x 220mm size remote controller
- Easy to install
- Same faceplate proportions as many other marine electronics devices
- Family look with Icom marine VHF family

GM600 - VHF GMDSS TRANSCEIVER with CLASS A DSC

The GM600 meets stringent standards required for SOLAS regulated commercial vessels and MED, 'wheel mark' approval for European merchant ships. The GM600 features a modern design and layout. A colour TFT LCD provides a user-friendly display and quick recognition of screen information. Day and night modes can be selected according to the lighting conditions.



KEY FEATURES

- Satisfies the SOLAS carrying requirements: GMDSS and MED
- ITU Class A DSC facility
- Large and high contrast 4.3 inch TFT colour LCD with day and night mode
- New intuitive user interface for straightforward operation
- 10W audio output power with external speaker
- Compact body for simple installation
- IPX7 waterproof construction for the front panel (1m depth of water for 30 minutes)
- NMEA 0183 interface for GPS connection
- Supports new VHF marine channel plan effective from January 1st, 2017

GM800 - GMDSS MF/HF TRANSCEIVER with CLASS A DSC

The GM800 meets stringent standards required for SOLAS regulated commercial vessels and MED, 'wheel mark' approval for European merchant ships. The GM800 features a modern design and layout. A colour TFT LCD provides a user-friendly display and quick recognition of screen information. Day and night modes can be selected according to the lighting conditions.



KEY FEATURES

- Satisfies SOLAS Carriage Requirements for a MF/HF Class A DSC Radio
- Meets MED* "Wheel Mark" Requirements
- ITU Class A DSC (ITU-R M.493-13)
- New intuitive user interface for straightforward operation
- Large and high contrast 4.3 inch colour
- TFT LCD with day and night mode
- IPX7 waterproof construction for controller (1m depth of water for 30 minutes)
- 125W* (PEP) output power
- Built-in 24V DC-DC converter

IC-GM1600E - GMDSS Survival Craft 2-Way VHF Radio

The IC-GM1600E Marine VHF handheld has been designed for GMDSS compliant survival craft communications. The radio is engineered to survive and function in the extreme environmental conditions common in marine emergencies and brings the latest Search and Rescue technology to the marketplace.

KEY FEATURES

- Meets strict environmental requirements for GMDSS survival craft radio. The IC-GM1600E meets "Wheel mark", MED certification
- High capacity BP-234 Lithium battery pack
- Tough, waterproof construction
- Large keypad with positive button action for easy operation while wearing gloves
- Wide viewing angle LCD display
- Easy to operate, even for an unskilled operator
- Highly visible yellow coloured body
- Optional VOX headset



WebWatch

Take your entertainment wherever you go. WebWatch lets you access the internet from a Wi-Fi Hotspot or cellular network with up to 4G speeds and share it wirelessly or through Ethernet. Now, you don't need another antenna for your TV. Access your favorite local TV channels through the WebWatch's built in TV receiver. Web and Watch, on your boat, recreational vehicle, cabin or AnyWhere else.



KEY FEATURES

- Antenna diversity
- Auto switch between Wi-Fi and Cellular
- iOS and Android app, web-based management
- Wi-Fi hotspot or Ethernet port network
- SMS and app reboot function
- High performance CPU and SDRAM
- Single cable for power and TV

WebWhip

Stay connected to the world of information wherever you go. Increase the coverage of public hotspots with the WebWhip, our fully integrated Wi-Fi antenna, radio and router, for hassle-free internet reception on your boat, RV, cabin or AnyWhere® else. Access the internet directly through LAN or wirelessly, by connecting WebWhip to any standard Wi-Fi router. Manage the network without any software installation through any device with a web browser. Simple, powerful, AnyWhere



KEY FEATURES

- 28dBm receiver
- Long range Wi-Fi reception on land or water
- Built-in router
- Works with normal Wi-Fi router
- Power over Ethernet (PoE)
- Fully plug and play
- Web-based device manager
- Manage device easily on any device with an internet browser
- FCC certified radio

QuickConnect

Stemming from the popularity of the quick connecting feature on Shakespeare's high-end Phase III® marine antennas, the new QuickConnect product line brings you the ease of connecting and disconnecting your marine antenna in a series of entry-level antennas.



KEY FEATURES

- QuickConnect™
- High quality connection
- Splash protection cap
- Centerpin® PL-259 Connector
- Standard mount design



V-Tronix Antennas and Fittings

This is just a small sample of the full range of Shakespeare's range of antennas and accessories. **Contact us for advice and full details.**

YHK Hawk

Stainless Steel Whip & Hawk Wind Indicator.

- Low windage
- 20m cable
- Solderless connection
- PL259 plug



427-N Kit (MD-10S)

1.5m GRP Antenna with polycarbonate ferrule.

- Ideal for smaller power boats & workboats
- 6m cable, PL259 plug
- Complete with white nylon
- Ratchet Mount



4186 (ARMNT-P)

Ratchet Mount, Nylon.

- Four-way swivel
- Deck or side mount
- Quick release lever
- UV resistant
- Suitable for antennas less than 2.4m



4720 (ARM-S)

Economy Rail Mount, S/Steel.
• 22 & 25mm round or square rails
• Vertical or horizontal fit
• Can be mounted on flat surfaces
• Complete with nylon adaptor



WS200-P

Speaker.

- UV resistant ABS construction
- Surface or flush mounted
- Solderless connector
- Can be used on 4-ohm or 8-ohm systems



ART 3

Radio Tester

- Die-cast aluminium construction
- Blister packed



MD23 & MD23 AIS

Helical VHF Antenna.

- 0.31m helical antenna
- Robust VHF antenna
- Ideal for RIBs and Sports boats operating in tough conditions



YWX Whipflex

Stainless Steel Whip.

- Low windage
- 20m cable
- Solderless connection
- PL259 plug



427-S (RV-120)

1.5m GRP Antenna with stainless steel ferrule.

- Ideal for smaller power boats & workboats
- 6m cable, PL259 plug
- Complete with white nylon
- Ratchet Mount



4187 (ARMNT)

Ratchet Mount, Stainless Steel.

- Four-way swivel mount
- Deck or side mount
- Quick release lever
- UV resistant



4722 (ARM-P)

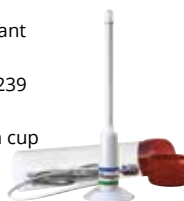
Fixed Rail Mount, Nylon.
• 22 & 25mm round or square rails
• With adaptor, rubber gasket & hexagonal key
• Complete with nylon adaptors



5911 Stowaway

Emergency VHF Antenna.

- 25.5cm whip
- Weather-resistant plastic tube
- 3.6m cable, S0239 connector
- Rubber suction cup
- Velcro straps included



WS200-P

Extension Loudspeaker

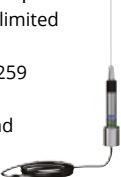
- Surface or flush mount
- Weatherproof,
- UV resistant
- Suitable for 4 or 8 ohm systems



5250 Skinny Mini™

0.9m Stainless Steel Whip

- Ideal for vessels with limited space
- 4.5m RG58 cable, PL-259 connector
- Standard 1" x 14 thread
- Requires mount with
- Centre hole for cable



HA156C & HA156C-AIS

Stub Antennas

- Low windage for racing yachts
- Helical construction
- 20m cable
- PL259 plug
- No ground-plane required



427-N (RV-120P)

1.5m GRP Antenna with Nylon ferrule.

- 3dB antenna.
- Ideal for smaller power boats & workboats
- 6m of RG58 cable plus
- PL259 connector



4190 (ARMRM-S)

Ratchet Mount, Stainless Steel.

- 22mm & 25mm vertical/horizontal rails
- Quick release lever



4365 (ALDHM)

Fixed Base Mount, Stainless Steel

- 100mm high, 75mm dia. base
- Ideal for fitting to radar arches
- Excellent for GPS & marine TV antennas



5187

Quick Release Ratchet Mount.

- Stainless Steel
- 4 way swivel.
- 5° adjustment.
- Sleek design



ACC105

Deck plug & socket

- For RG58 cable
- With N-type connector,
- Shroud & s/steel screws
- With 2 protection caps



5101-S (RV-240)

2.4m GRP Antenna with Stainless Steel ferrule

- 6dB antenna.
- Ideal for power and work boats
- 1" x 14 TPI thread
- 6m RG58 cable with PL259 connector



YRR & YRR-W Raider

RIB Antenna

- Specially designed for rigid inflatable boats
- Short helical design to avoid snagging
- Solderless connection
- 8m cable
- PL259 plug



AIS-MAST Whip

- Stainless steel whip
- Solderless connection
- Low windage
- Cranked nylon bracket for masthead mounting
- 20m of RG-58 cable with PL-259 plug



4721 (ARMRM-P)

Ratchet Rail Mount, Nylon

- For 22mm & 25mm vertical/horizontal rails
- Complete with rubber gasket
- Quick release lever



4711 (ALDHM-P)

Flange Mount, Nylon

- 25mm high, 70mm dia. base
- Suitable for moderate
- Duty operations



BS-2S

Blue-tooth Wireless Speaker

- Waterproof design, ideal for marine
- Can be used to answer telephone
- Suction cup mounting for ease of installation



PV3i

DC-DC Converter

- Converts 24v-12v
- 3/6 amp
- Isolated Switchmode



HDTV 8"

Marine External TV Antenn

- 200mm (8") Tall
- Ideal for mounting in tight spots
- 10m 75 Ohm RG59 cable
- 2x F connectors
- IEC to F connector



GX1300E - Fixed DSC VHF Radio

The GX1300E is an affordable ultra-compact ITU-R M.493-13 Class D VHF radio that has been re-engineered to meet the IPX8 submersible waterproof rating of 1.5m or 4.92 feet for 30 minutes, redesigned with a new Easy to Operate Icon/Menu System featuring an oversized full dot matrix LCD (31 mm x 55 mm) to increase the size of the channels and navigation information* displayed.



KEY FEATURES

- New Ultra-Compact rear chassis design
- Easy to Operate Icon/Menu System
- Oversized Full dot matrix display (31 mm x 55 mm)
- Built in Separate Receiver for CH70 (Receiving DSC Calls)
- DSC test call and Auto DSC channel change selection
- GPS position and Time Shown on a Full-dot Matrix Display
- NMEA In and Output Connections to a Compatible GPS Chart Plotter
- Programmable soft keys
- Automatically poll the GPS position of up to 4 ships using DSC
- Submersible JIS-8/IPX8 waterproof rating (1.5M or 4.92 feet for 30 minutes)
- User programmable ATIS mode



GX1700E - Fixed DSC VHF Radio with GPS

25W Marine VHF/FM Transceiver with integrated 12 Channel WAAS GPS receiver. GPS antenna built in to the front panel allows reception when bracket or flush mounted.



KEY FEATURES

- Built in GPS receiver
- Ultra thin and compact rear case design (3.5" depth)
- DSC with Individual, All Ship, Position Report, Request and Distress calls
- Navigation to a DSC Distress Call with compass page
- Automatically poll the GPS position of up to 4 ships using DSC
- GPS Compass and navigation (LAT/LON, SOG, and COG) display
- Submersible JIS-8/IPX8 1.5M (4.92ft) for 30 minutes
- Noise cancelling microphone with channel UP/DOWN, 16/9 and H/L keys
- Programmable Scan, Priority Scan, and Dual Watch
- NMEA Input and Output
- Programmable soft keys
- Compatible with CMP30B Remote Access Microphone
- User programmable ATIS mode

CMP30B - RAM3 Second Station Mic

This submersible remote has an oversized LCD display and backlit keys. It operates as a second station to the radio allowing full control of the VHF at the flybridge, in the cockpit, tower or location of your choice.



KEY FEATURES

- Control all VHF functions including PA, foghorn, DSC
- Inbuilt distress alert button
- Display shows channel names and repeats GPS info
- Also controls AIS and way-point functions when used with the GX2000E and GX2100E

SUPPLIED WITH

Bulkhead socket assembly and mounting clip.



GX1600E - Fixed DSC VHF Radio

Mounting a VHF radio has never been easier! The GX1600E's ultra thin, compact rear case is only 3.5in deep - half the depth of comparable VHF radios on the market. Submersible to IPX8 1.5m or 4.92 feet for 30 minutes standard with three year waterproof guarantee!



KEY FEATURES

- Oversized dot matrix display
- Customisable channel names
- Programmable soft keys
- GPS compass and navigation (LAT/LON, SOG, and COG) display
- Enter, save and navigation to way-point
- Navigation to DSC Distress Call position
- Automatically poll the GPS position of up to 4 ships using DSC
- Noise cancelling microphone with channel select, 16/9 and H/L keys
- NOAA weather channel selection with alert
- Programmable Scan, Priority Scan, and Dual Watch
- NMEA input and output
- Compatible with CMP30B Remote Access Microphone
- Submersible JIS-8/IPX8 waterproof rating (1.5M or 4.92 feet for 30 minutes)
- User programmable ATIS mode

GX2000E - Fixed DSC VHF Radio

Compact AIS enabled DSC VHF with large, clear 1.8in dot-matrix displays. The GX2000E receives external AIS data via NMEA input - AIS targets are displayed in a radar style format*. Connect to a GPS and both models can store up to 100 way-points, which can be navigated to using a unique compass display. The display also shows position, speed, course and bearing to way-point.

*GX2000E requires an external AIS input



KEY FEATURES

- AIS info - MMSI, call sign, ship name, bearing, distance, speed and course*
- Closest Point of Approach (CPA) alarm*
- No need to enter the MMSI number to call a specific AIS vessel - simply select the target and press the call button!*
- Position polling, ideal for flotillas and fishing fleets
- 30 Watt PA/loudhailer pre-programmed with fog signals
- Output AIS data to chartplotters etc via NMEA*
- ClearVoice noise cancelling speaker microphone
- Rugged die cast chassis, waterproof to JIS7 I IPX7
- Compatible with CMP30B
- User programmable ATIS mode

*Requires GPS AIS input

HX280E - Waterproof Hand-held VHF Radio

Compact, rugged submersible hand-held with all International, USA and Canadian channels and a highly legible LCD display with automatic back-light. The pre-set key allows you to recall the 10 most frequently used channels.

KEY FEATURES

- 16hr duty cycle from 1600mAh Li-ion battery
- Dual Watch
- Battery charge level indicator
- ATIS mode (via dealer programming)

SUPPLIED WITH

1600mAh Li-ion battery pack, belt clip



HX290E - Waterproof Floating Hand-held VHF Radio

An affordable floating hand-held radio with speaker microphone socket and large easy to read display.

KEY FEATURES

- Submersible JIS-8/IPX8 (3.3 feet for 30 mins)
- 1 and 5 Watt transmit power output
- Glow-In-the-Dark strip
- Huge channel display
- Key lock
- Optional speaker microphone or headset capable
- All USA, International and Canadian Marine Channels
- Programmable Scan, Priority Scan and Dual Watch
- Pre-set key used to recall up to 10 favourite channels
- NOAA Weather channels and Weather Alert
- User programmable ATIS mode



SUPPLIED WITH

Li-ion battery, belt clip, AC charger, cradle with charging indication, wrist strap.

HX300E - Waterproof Floating Hand-held VHF Radio

The world's first hand-held with a USB charging port. The compact, ergonomic case is a result of the new ultra small, large capacity 1380 mAh 3.7V Li-Ion battery. The intuitive menu system allows easy access to all of the setup functions of the radio, making it easy to customise settings.

KEY FEATURES

- Floats & submersible IPX8
- 5 Watt transmit power
- Water activated LED light
- 600 mW loud internal speaker audio
- User programmable ATIS mode



SUPPLIED WITH

1380 mAh 3.7V Li-Ion Battery, AC USB Plug and charging cable.

GX2200 - Fixed DSC with AIS & GPS

The GX2200 MATRIX AIS/GPS, features a 66 channel WAAS GPS antenna integrated into the front panel of the radio, now there is no need to hassle with wiring the radio to a GPS for DSC (Digital Selective Calling) or AIS (Automated Identification System). Out of the box and ready to go, acquiring AIS and AIS SART targets, DSC calling, position sharing, way-point navigation, and navigation to DSC distress calls can all be performed with just a few simple steps.



KEY FEATURES

- 66 Channel WAAS GPS antenna
- Integrated dual channel AIS (Automatic Identification System) receiver
- AIS / AIS SART target display: MMSI, Call Sign, Ship Name, BRG, DST, SOG and COG
- 4800 or 38400 NMEA baud rate selection, for plotters with 1 NMEA port
- Submersible IPX7 (3.3 feet or 1 meter for 30 minutes) front panel
- GPS Compass, Way-point and GPS status pages
- User programmable ATIS mode



HX870E - Floating Hand-held DSC VHF Radio

The HX870S FLOATING CLASS D DSC VHF hand-held features a 66-channel WAAS GPS receiver allowing the radio to transmit a DSC distress call with your vessels position or navigate to a way-point. The new Oversized full dot matrix LCD (1.7" (W) x 1.7" (H) or 2.3" diagonal) and Easy to Operate Icon/Menu System makes this the most intuitive hand-held on the market: DSC calling, position sharing, way-point and route navigation, navigation to DSC distress call can all be performed with just a few simple steps making the HX870 perfect for everyday use or adding to your ditch bag.

KEY FEATURES

- DSC with built-in 66 channel GPS receiver
- Oversized full dot matrix display (1.7" (W) x 1.7" (H) or 2.3" diagonal)
- MOB (Man Over Board) Function
- 6W Transmit Power
- User programmable ATIS mode
- Floating
- Group monitoring



L247DRS Super Slim - 24in LED Combi

The new ultra slim framed L247DRS LED TV / DVD / PVR combi with built-in DVB-T2 and DVB-S2 allows you to enjoy high definition TV programmes received through your aerial or a satellite dish, without the need for an extra decoder box. The contemporary yet practical design has resulted in the L247DRS having a 24" screen but with the dimensions typically attributed to 21.5" model. The all new Avtex DRS range sets a new standard in mobile portable entertainment.

KEY FEATURES

- 24" FULL HD wide-screen [1080p]
- DVBT & DVBT2 digital tuner
- DVB-S & DVB-S2 digital satellite tuner
- HD built-in for terrestrial and satellite channels
- DVD/CD player
- AQT one button tuning system
- Pause/playback live TV/ Instant record to USB on both
- Satellite and TV
- Timer record from programme guide (EPG)
- 2xHDMI/2xUSB/phono/headphone/audio in/co-axial audio-out
- CI socket for access for pay TV's
- Wall mountable VESA standard
- 240v AC / 12v24v DC



Satellite TV options available

MS-BB100 - Sound Core

SOUND CORE BLACK BOX ENTERTAINMENT SYSTEM



KEY FEATURES

- A2DP BLUETOOTH® AUDIO STREAMING WITH AVRCP
- FUSION-LINK™ CONTROL (WIRED)
- FUSION-LINK CONTROL (WIRELESS)
- ANDROID AOA AUDIO PLAYBACK
- MULTI-ZONE™ TECHNOLOGY
- USB connector
- EASY MOUNT CHASSIS
- IPx7 waterproof remote
- EMBEDDED BLUETOOTH MODULE
- APPLE AUDIO PLAYBACK
- Vertical Convection Technology (VCT) allows circulation of airflow around the heat sink edges for enhanced cooling
- DAB+ READY



MS-RA50 - Marine Stereo

The MS-RA50 has a shallow mount depth of only 55mm, perfect for small boats and personal water-craft. It features iPod/iPhone music playback and Fusion's innovative easy to use True Marine music interface. With a maximum output of 80 watts, this 2 channel stereo is capable of powering a set of speakers.



KEY FEATURES

- Large 2.3in LCD display
- Total control of iPod music library through fully integrated iPod user interface
- Connect iPod/iPhone via optional cable or water resistant docking unit
- Left and Right AUXIn, Left and Right line out connections
- Water resistant to IPX5

650 SERIES

Introducing the exciting new Fusion 650 Entertainment Series, available in two models: MS-UD650 Internal UNI-Dock and MS-AV650 DVD/CD system. Offering superior playback of your favourite USB, Apple iOS and MTP Android/Windows media devices, the 650 features Fusion-Link NMEA2000 control, Blue-tooth A2DP audio streaming capabilities and Pandora radio support, for a true symphony of audio technologies.



KEY FEATURES

- Internal UNI-Dock (MS-UD650 only)
- Component and composite video connections (AV650 only)
- 360 degrees IPX5 water resistant
- Built-in Class D 280W Amplifier
- Optically bonded LCD



MS-RA70N - Marine Stereo



KEY FEATURES

- 4x50W Class A Amplifier
- FUSION-Link and NMEA Network
- Single Din rear and face will fit into a traditional car stereo hole
- Great for new and retrofit installs.
- AM/FM/iPhone/iPod/Android interface
- Built-in high level Bluetooth
- Rear USB connection
- Full Apple and Android Interface via UNIDOCK or Panel Mount USB
- Optically Bonded Glass Display
- Front IPX6 when mounted
- 2-Zone with 1 discrete Pre-Out and Sub-Out
- 1 Aux-In

MS-DAB100A

The new MS-DAB100A module offers users a plug-and-play converter for existing FUSION stereo systems, allowing access to the latest DAB and DAB+ radio stations. Gaining in popularity, DAB stations now service 94% of the UK, Germany, Netherlands and Scandinavia, with more stations moving to the format regularly. The FUSION DAB module is IPx3 rated and, like all FUSION Entertainment components, is designed to withstand the harsh marine environment. Installations are discreet as the unit has a compact footprint and the included adhesive pad or screw-mounted bracket make set-up easy.



750 Series

Introducing the flagship 750 Marine Entertainment Series, the pinnacle of Fusion ingenuity and craftsmanship, which is setting the standard for the entire marine industry. Available with an internal UNI-Dock (MS-UD750) or marine DVD/CD player (MS-AV750) and supporting the latest Apple iOS, MTP Windows/Android and USB media devices.

KEY FEATURES

- Internal UNI-DOCK (MS-UD750 only)
- HDMI conn. (MS-AV750 only)
- 360 degrees IPX5 water resistant
- Built-In Class D 280W amplifier
- Optically bonded colour LCD



MS-RA205 - Marine Stereo

The MS-RA205 features FUSION-Link NMEA 2000 connectivity. This fully featured compact marine stereo delivers powerful, clear and dynamic sound. Powered by the advanced ARM-9 Processor, the MS-RA205 offers quick and intuitive audio control. FUSION's iPod interface allows navigation of the iPod menu structure and offers selection of songs by artist, song, playlist, album, genre or composer. MTP (Media Transfer Protocol) allows you to connect your supported Windows/Android smartphone and access your entire music library.

KEY FEATURES

- Sources: AM, FM, VHF, USB, iPod/iPhone, MTP, Blue-tooth (requires MS-BT100 or MS-BT200 sold separately, AUX)
- NMEA 2000 certified & VHF Receiver
- iPod/iPhone video playback (with supp. iPod models and MS-DKIPUSB Dock)
- Multi-Zone Technology



Thrane & Thrane 150 & 250 Sailor Fleet - Voice & BB Internet Access

Sailor 150 FleetBroadband features a small and light antenna, which enables simple user-installation, so smaller vessels with a requirement for reliable, high quality global internet and voice can enter the broadband era with a true IP solution. The Sailor 250 FleetBroadband harnesses the flexibility of Inmarsat's latest 1-4 satellite technology. It offers budget conscious fishing vessels, workboats and private yachts the opportunity to enter the broadband arena whilst providing the reliability and functionality expected of systems for large commercial vessels.

KEY FEATURES

- Data rate - 150kbps (150), 284kbps (250)
- Antenna diameter less than 30cm
- Weight - 3.9kg (150), 5kg (250)
- Competitively priced hardware and airtime
- Voice and data simultaneously
- IP connection for e-mail, internet & Intranet access
- LAN interface
- IP Handset interface



Thrane & Thrane Sailor TT-6110 - Mini-C System

No professional seaman ever compromises the safety of his crew and vessel, and the new Sailor 6110 mini-C GMDSS is the world's most powerful, user-friendly and reliable satellite transceiver system for all ship tracking, monitoring, messaging and distress communications.

As the latest in the exceptional range of Inmarsat-C systems that have been watching over seamen for the last two decades, the SAILOR 6110 mini-C features a range of unique enhancements, such as superior durability, ThraneLINK compatibility, SSAS compliance and a Galileo-ready 50 channel GPS module.

KEY FEATURES

- First ever approved touch screen terminal for GMDSS use
- External storage via SD card or USB flash disk
- Innovative approach to cabling for simple networking and expansion
- Accurate, reliable 50 channel GPS module that is also Galileo ready
- ThraneLINK



Inmarsat iSatphone 2 - Hand-held Sat Phone

The new-generation iSatPhone 2 joins iSatPhone Pro in our hand-held satellite phone portfolio - bringing more choice to customers wanting the reliability Inmarsat delivers. iSatPhone 2 is a tough phone for a tough world. It offers unrivalled battery life - 8 hours of talk time and up to 160 hours on standby.

KEY FEATURES

- Dependable connectivity
- High voice quality
- Voice-mail, text and email messaging
- Extended battery capacity
- Assistance button - sends GPS location & text to pre-set emergency number
- Tracking - sends location information
- Blue-tooth for hands-free use
- Incoming call alerts with antenna stowed
- Ergonomic and ruggedised handset



Iridium 9555 & 9575 - Hand-held Satellite Phones

The 9555 is a compact, light and easy to use hand-held Iridium phone with SMS and email capabilities and an upgraded mini-USB data port. Water and shock resistant, it is engineered to perform in demanding and industrial environments.

KEY FEATURES

- True global coverage
- Retractable antenna for compact carrying
- Illuminated, weather-resistant keypad
- Menu configurable in any of 21 languages
- Programmable international codes for automatic dialling
- Built-in help function
- Integrated speaker-phone
- Mini-USB data port
- Standby time up to 30 hours, talk time up to 4 hours
- 9575 Extreme - GPS-enabled location-based services
- 9575 Extreme - Online tracking
- 9575 Extreme - Accessories to create instant Wi-Fi hotspots
- 9575 Extreme - Certified S.E.N.D. by RTCM



Thuraya XT Lite - Hand-held Sat Phone

The Thuraya XT-LITE provides reliable satellite phone connectivity with unbeatable value. It is designed for cost-conscious users who need to stay securely connected, without compromising on a clear and uninterrupted connection. It is very easy-to-use. You can make phone calls and send SMS messages in satellite mode, whether you are crossing the desert, sailing at sea or climbing mountains.

With the Thuraya XT-LITE, staying connected via satellite has never been this easy.

KEY FEATURES

- Calls and text messages in satellite mode
- Long-lasting battery life
- Supported by Thuraya's robust and powerful satellite network



Thuraya XT Pro - Hand-held Sat Phone

The Thuraya XT-PRO is the first satellite phone with built-in GPS, Beidou and Glonass capability for highest flexibility in all regions. It has the biggest display on any satellite phone and comes with hardened Gorilla® glass for harsh environments. The screen is designed for glare resistance which allows for optimal visibility in bright sunlight and it includes a brightness sensor to automatically adjust the backlight of the display.

KEY FEATURES

- Global Navigation Satellite System
- Dedicated SOS button
- Calls, SMS, fax and Internet connectivity in satellite mode
- Supported by the most robust and powerful satellite network



Iridium SC4000 - Fixed Sat Phone

Suitable for any size of vessel, comprises transceiver, intelligent handset and small marinised antenna. Ideal for crew calling use with pre-paid scratch cards.



KEY FEATURES

- True global coverage - voice and data
- Data rate 9.6kps when compressed
- Rugged construction, lightweight waterproof antenna
- Flexible installation - up to 50m between handsets
- RJ11 port for secondary analogue telephone

SUPPLIED WITH

Transceiver, antenna, handset. Antenna cable sold separately (10, 15, 20 & 30m sizes)

Lifedge Waterproof iPhone Case - 5/5S

Use every feature of your iPhone for navigation, photography and communication, safe in the knowledge that it's 100% waterproof and protected from the elements.

KEY FEATURES

- Shockproof
- 100% waterproof and dust-proof to IP68.
- Abrasion resistant, sensitive touch screen protector
- Access all iPhone functions
- Exceptional sound transmission and call clarity.



Waterproof Charge Sync Cable

Ultra-tough, completely fray-proof and 2.0 (6.5ft) long, the Lifedge 100% Waterproof Lightning to USB Cable is supplied with a Lifetime Guarantee and Tangle-Free Cable Carrier. Approved by Apple and compatible with iPhone, iPad and iPod.



Lifedge Waterproof iPad Case

Go anywhere- inshore, offshore, on-board, overboard. Integrate with your on-board systems. Retains full touch-screen and camera functionality.

KEY FEATURES

- 100% Waterproof. Shockproof
- Rated to IP67 - dust tight and waterproof to 1m
- Anti-glare screen for sunlight viewing
- Comfortable handstrap for ease of use
- For iPad 2,3 and 4



Mast Mounts - Platforms

Scanstrut Mast Mounts are a popular choice for mounting radar or satcom antenna onto your yacht's mast, raising the antenna clear of any obstructions or interference.

KEY FEATURES

- Universal Mounting: Attach to any mast with four swivel feet
- Strong Fixing: 12 point fixing using high quality monel rivets
- Safety wire kit independently attaches scanner to mast in case an accident damages the installation



Self-Levelling Radar Mounts

TESTED BY YACHTING MONTHLY AND PROVEN TO GIVE PICTURE PERFECT RADAR PERFORMANCE.

Ensures radar stays level with the horizon at all times for optimum antenna performance. Hydraulic damping eliminates minor oscillations. Single GPS I VHF mounting accessory available.

MAST MOUNTED

- Reduced weight aloft, weighs only 3.4 kg

BACKSTAY MOUNTED

- Options to mount fore or aft of backstay
- Suitable for single and split backstays
- 2.6m aluminium mounting pole
- High strength universal base eliminates loading on backstay
- Deck, transom or chain plate mount



POLE MOUNTED

- 360° adjustable base enables installation on sloping transoms and level decks
- 2.5m mounting pole
- Option to install both satcom and radar on one pole mount



SC100 - Pole Mount

Available in Aluminium and a complete kit with everything needed for quick and easy installation.

KEY FEATURES

- Two heights - 1.9m recommended for deck mounting and 2.5m recommended for transom mounting"
- 360° adjustable base fits angled decks and sloping transoms
- Supplied with two support modules for maximum fore/aft support

ALSO AVAILABLE

- **SC2 Pole Mount** for larger radomes, open array antennas and satcoms, choice of 1m deck mounted and 3m or 4m through deck mounted versions

ACCESSORIES

- Lifting Crane, 55W Halogen Deck Flood Light, Light & GPS/VHF Antenna Mounts



Scanpod - Instrument Mounting Pods

For mounting chartplotters, radar displays, instruments and autopilot controls, manufactured from acrylic capped ABS plastic in high gloss white.

KEY FEATURES

- **Helm Pod Rail Mount** - To fit 1 standard instrument or 7in display
- **Helm Pod Arm Mount** - To fit 1 standard instrument or 7in display
- **Compact Scanpods** - To fit 7, 8 & 12in displays from Raymarine and Simrad



HELM PODS

- No drill fixing kit - unique clamping system provides universal fit to all pedestal rails 25mm - 33.7mm dia.
- Fits rail widths from 178mm (7in)

FLEX MOUNT SYSTEM ACCESSORY

- Tilt display forward I back and side to side for best viewing angle
- Clamp onto existing rail or steering binnacle - install Helm Pod as normal



MAST PODS

- Universal mounting system fits a wide range of mast sizes (76 - 223mm)
- Carbon Mast Pod - lightweight unit designed to fit 3 or 4 maxi instruments

DECK PODS

- Quick release lever to alter the angle of the screen quickly
- Adjustable base allows a range of movement and multiple mounting angles



Rokk Mount - Electronics Mount

Multi position mount for small electronic devices on-board.

ADJUSTABLE DECK MOUNT

- "Set & forget" system ensures zero loss of clamping force over time
- Easily adjusted. Unlock, reposition, lock again

ADJUSTABLE RAIL MOUNT

- Fits to rails from 25.4mm to 33.7mm diameter

RAIL MOUNT

- Install instruments direct onto pushpit or pedestal rails.
- Fits rails from 25.4mm to 33.7mm dia.



PowerTower - Antenna Mount

Mount 2kW, 4kW radomes or small satcom antennas on the cabin roof, flybridge or radar arch, giving a clear view of the horizon for maximum antenna performance. Pre-fitted IP65 cable gland and watertight base seal.

COMPOSITE POWERTOWER

- Choice of 150 or 350mm heights
 - 200mm² footprint
 - 30° aft leaning profile

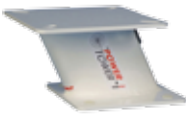


STAINLESS POWERTOWER

- Small footprint - 150mm² mounting footprint makes it ideal for use on narrow arches or RIB A-frames
- 150mm height
- 30° aft leaning profile

ALUMINIUM POWERTOWER

- Choice of 130 or 250mm heights
- 30° aft leaning (open array) or 25° forward lean (radomes) profiles
 - 180mm² footprint



SATCOM POWERTOWER

- For 30cm, 40cm and 60cm satcom antennas
- Raises antenna by 300mm for maximum performance
- Two models available- 30° aft leaning stainless steel and vertical profile Aluminium



CAMERA POWERTOWER

- Choice of 150 or 300mm heights
 - 30° aft leaning profile

Dual PowerTower - Antenna Mount

For radomes or open-array antenna and 30cm, 40cm or 60cm satcom antennas.

KEY FEATURES

- Installs satcom antenna above the radar - eliminates antenna interference, ensures maximum performance
- Accessory available - install additional lights



Satcom Antenna Mount - Dome Mounts

For 30cm, 40cm and 60cm satcom/tv antennas.

KEY FEATURES

- Reduce antenna footprint by up to 60%, providing greater choice of antenna position
- Watertight seal and gland systems



Tapered Mast - Antenna Mount

Combination mount for radar, lights, GPS I VHF antennas, cameras and searchlights, with each item positioned for maximum performance.

KEY FEATURES

- Removable wings for safe low cost shipping
- Hollow wings and stem allow hidden cabling
- Option to fit search light or camera
- Mount additional satcom



T-Bar / T-Pole / Rail Mount - Antenna Mounts

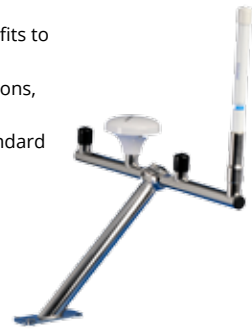
Cost effective mounts for up to 4 GPS I VHF antennas. Easy to install and ideal for both sail and powerboats.

KEY FEATURES

- **T-Pole** - 1.5m adjustable height, fits to flat or sloping surfaces
- **T-Bar** - Mount to upright stanchions, sloping transoms, cabin roofs
- **Rail Mount** - Mount to rails, standard 1in by 14 tpi thread



Rail mount



T-Bar



T-Pole

Deck Seal - Waterproof Cable Routing

100% WATERPROOF- IPX6 & IPX7 tested and approved. Provides waterproof cable routing with options for 2mm to 40mm connectors. Supplied with both pre-drilled and blank inner seals.



MULTI DECK SEAL

- Supplied with 1 blank seal
- Marine grade aluminium with hard anodised finish to resist impact marks



Ultra Compact Pods - Cable Seal

Designed with the latest generation screens in mind, the new Ultra Compact 7" Scanpod Range is as low profile as it can get. Achieves a neat, streamlined look overall and is perfect for installations where there is limited space available. Arm, Rail or Deck mounting options are available.



Aluminium PowerTower

Save time, eliminate sealant and ensure a 100% watertight installation for your radar or satcom with the new APT150/250 PowerTower. Available in 2 heights, both models are supplied with an internally mounted Scanstrut Deck Seal to ensure watertight cable management. An optional Central Accessory Bar will mount up to 3 GPS/ VHF or navlights.



Micro & Horizontal Deck Seals

New Mini Deck Seal models designed to fit cable diameters from 2mm - 6mm (0.08" - 0.24")

DS3



DS11





CHANDLERY

New for 2016

Cactus now supply the complete range of chandlery and marine equipment, all at great low prices. We also do great package deals, if you need more than a few items or are refitting.

Here is just a small selection of the 10,000 extra products we now supply with lots more being added.

Anchors

Anchors from Plastimo including the award winning Kobra anchor.



Liferafts

Liferafts from Ocean Safety, Crewsaver and Plastimo.



Lifejackets

Budget and professional life jackets from Crewsaver and Plastimo.



Bilge pumps

Electric and Manual bilge pumps from Whale.



Windlass's

Huge range of Quick windlass'.



Bow Thrusters

Bow Thrusters from Lewmar and Quick.



Navigation Lights

LED and traditional navigation lights from Hella.



Interior Lighting

A wide range of interior lights.



Compasses

Handheld and fixed compasses from Plastimo, Richie and Garmin.



And much, much more... See online for details

GET THE LATEST PRICES ONLINE

- See our full product range on our website www.cactusnav.com
- Get up-to-the-minute prices and buy securely online
- See the very latest unbeatable mega deals
- Looking for a specific product? Use our online search
- Function to find what you're looking for
- Seen it cheaper elsewhere? Try our Price Match function we regularly check prices

PAYMENT

We accept the following methods of payment - cash, cheque and most credit and debit cards



- Cactus will not charge your credit/debit card until the goods are shipped unless it is a highly specialised item, in which case we may ask for a small deposit at the time of order.

TRADE CUSTOMERS

We have a trade website which offers attractive trade terms for trade customers including Chandlers, Brokerages, Boat Builders, Marine Engineers, Yacht Charter, and Marine Electronics resellers.

To qualify you must be able to answer yes to the following questions:

1. Do you run a business whose principle activity is in the marine sector?
2. Have you been established for at least 2 years?
3. Do you have a valid UK or EU VAT number?
4. Can you provide 2 marine trade references?

If the answer is yes to these simple questions just complete the online application form, once approved you can then create an account online and we can activate for trade terms.

INTERNET PARTNERS WANTED

If you want to set up a website dealing in marine electronics we want to hear for you, we can help with the design, technical aspects, and supply of products. Please email andrew@cactusnav.com for details.

IMPORTANT ADVICE

We work very hard to provide a high level of customer service and if you follow our simple advice we can ensure that your shopping experience with us is pleasant and stress free.

Please allow a reasonable time for ordering and delivery - although we keep plenty of stock in our warehouse many marine electronics manufacturers find it difficult to predict demand, so delivery times can vary, particularly during the season. We will always tell you if the product you are buying is about to change, so there is no need to leave ordering to the last minute.

Buy PC software at least 2 weeks before you plan to use it. Loading and configuring marine software is generally not straightforward, often there are issues with unlock codes and drivers that can take a few days to resolve, plus you might need to order additional PC peripherals so everything functions correctly.

Because of the number of PC operating systems, navigational applications, and electronic chart formats available, we are unable to provide telephone support for marine software. However, we provide a full in-house commissioning and setup service, please ask the sales team for details.

When calling please give us plenty of information about your boat and how you intend to use the equipment, even if you are just phoning up for a price. This provides a useful check to ensure you are purchasing the right product for you.

If you are ordering accessories or electronic charts, please check compatibility with us before ordering. Formats and specifications change all the time so it is worth double-checking even if you think you know what you need. This will avoid the trouble and expense of returning items that were incorrectly ordered.

If you have any comments or feedback on our service or the products please email me directly (andrew@cactusnav.com) and I will do my best to help.

naut**E**bike THE NEXT GENERATION

Sturdy, robust, strong and with the same power and drive as full sized electric bikes; the NautEbike is a formidable accessory to anyone's freedom.



Not all folding bikes with this frame are the same and the NautEbike has been designed to maximise rider comfort and offer a high level of specification. The frame is 2" longer than many similar looking bikes and with the curved handlebar, a further 1" is gained. This extra 3" length makes the riding position much more comfortable, while the 2.15" chunky tyres give good grip on paths and tracks.

High quality components have been used - such as the sealed bottom bracket, Tektro branded brakes, 4 mode pedal assist with thumb throttle. All are designed to improve your riding experience.

A range of accessories are available, including a 16" wicker basket that does not impede folding, a carry bag and panniers made specifically for smaller wheels.

AVAILABLE FROM: www.cactusnav.com

Bike Model	NautEbike folding	Climbing ability	15° throttle only	Lights	Reflectors only as standard
Battery	36 volt x 10Ah (16Ah available)	Charge time	4/6 hours full charge depending on battery size	Rack	Rear parcel shelf. 25Kg safe working load
Power	250 watt brushless motor	Wheels	20" Double wall alloy rims	Power control	ON/OFF button, 4 pedal assist modes, thumb throttle
Weight	20Kg	Frame	17" hand welded aluminium alloy	Handlebar	Aluminium alloy folding handlebars
Load capacity	100Kg	Range	15-20 miles throttle, 25-30 miles pedal assist	Tyres	20X2.125" Kenda
Maximum speed	15mph under power for UK law	Suspension	Zoom coil suspension forks	Folded size	L: 30" (84cm) H: 26" (74cm) W: 19" (47cm)



Strong on Price & Advice

TEL: +44 (0) 1752 548845

EMAIL: sales@cactusnav.com

WEBSITE: cactusnav.com

CALL: +44 (0)1752 548845 VISIT: WWW.CACTUSNAV.COM

Phone-lines: Monday to Friday 9.00am to 5.00pm

25 YEARS OF EXPERIENCE • TECHNICAL SUPPORT • AUTHORISED DEALER



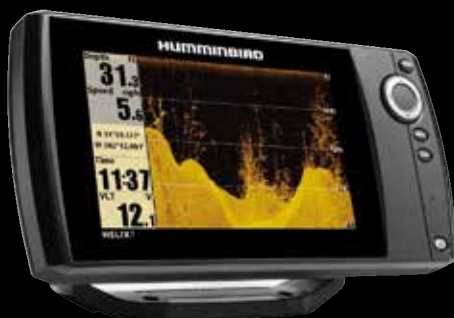
**SHAKESPEARE
WEB WHIP**



**LOWRANCE
HDS GEN3**



**GARMIN
STRIKER 4**



**HUMMINBIRD
HELIX SERIES**



**FUSION
MS-BB100**

BRANDS STOCKED

NASA-
GARMIN
Raymarine
SIMRAD
FUSION

LOWRANCE
HUMMINBIRD
SCANSTRUT
victron energy
Thrane & Thrane
inmarsat

B&G
ICOM
spot
KVH
DIGITAL
YACHT

mcmurdo
Shakespeare
MERLIN
MASTERVOLT
THE POWER TO BE INDEPENDENT
NAVIONICS
ocean SIGNAL

C-MAP
by JEPPESEN
FURUNO
vespermareine
Intellian
STANDARD HORIZON
iridium

AND MANY MORE!