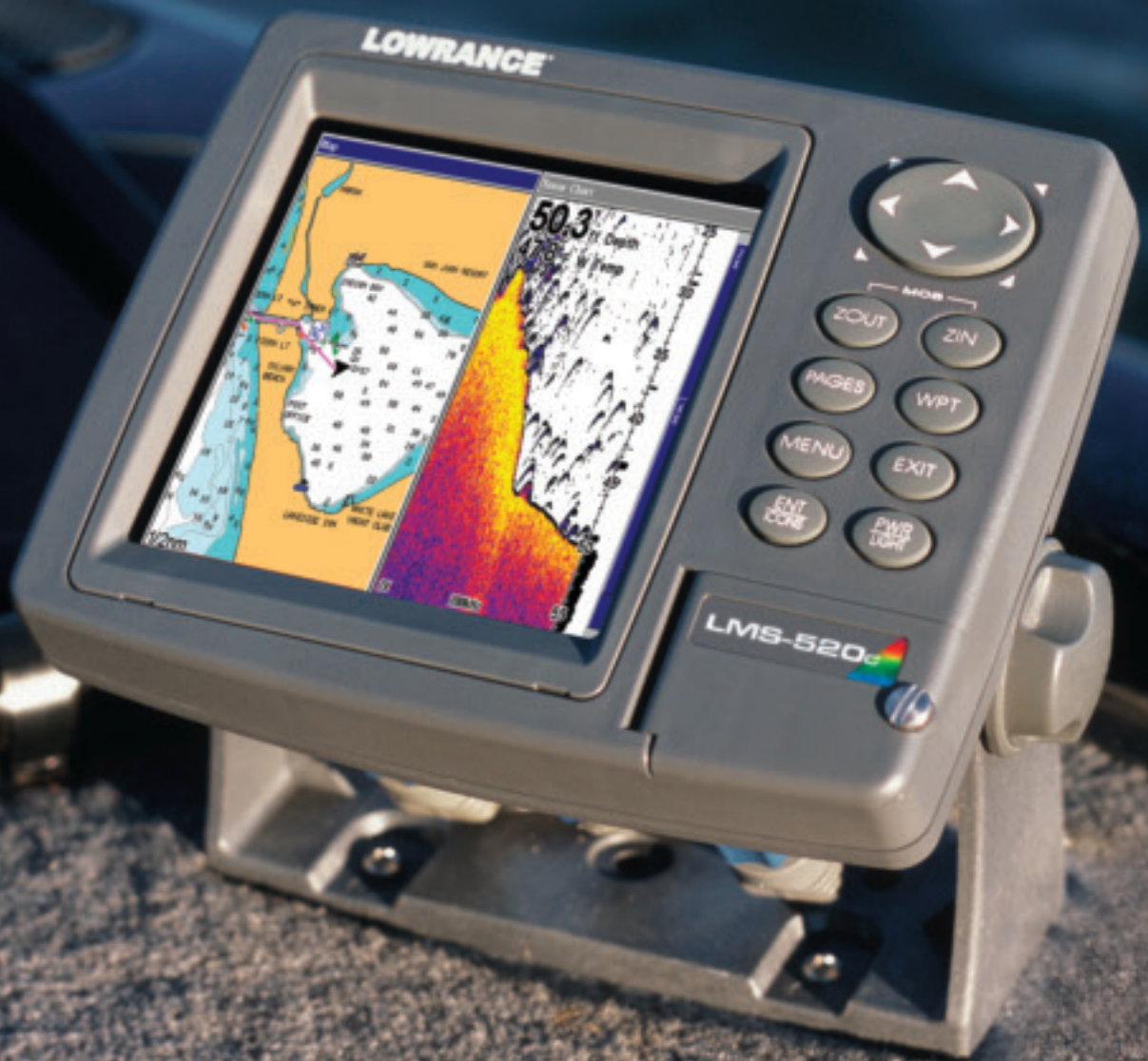


Lowrance
product catalog
'07





From the almost magical portable “Green Box” with a spinning flasher display, developed in 1957, and later known as “Fish-Lo-K-Tor”, Lowrance has taken a tremendous step towards being a world leader in marine electronics. Lowrance has a unique history of innovation and experience, combined with reliability and the newest in technology. Entering the navigation market in the late eighties, a forerunner in use of GPS technology in the early nineties, Lowrance offers the best of technology, also in handheld navigation,

“Lowrance is your supplier for any enjoyable tour, either by sea or land.”

CONTENTS

Chartplotters/Echosounder multi function units	4-7
Chartplotters	8-11
Echosounders	12-15
LowranceNET™	16-17
Transducers	18
Radar	19
Instruments	20-21
Cartography	22-23
Handheld Navigation	24-25
Technical Specifications	26-29



Chartplotter/Echosounder multi function units



Excellence in navigation and fishfinding

80% of the fish are in only 20% of the water – find them with Lowrance

The new line-up for 2007 reflects the results of Lowrance's ongoing screen development programme. With the latest advances in their super-high resolution, sunlight readable, 16-bit color, TFT, SVGA screens you will experience excellent readability even in direct sunlight.

Plug Lowrance NauticPath™ marine cartography. No mapping configuration needed.

Couple that with nearly 50 years of experience in building the world's best echosounders with many technology firsts. Advanced Signal Processing (ASP™) is used in all Lowrance echosounders and has been for 15 years in order to give you the sharpest, clearest picture free from clutter and unwanted signals.





Chartplotter/Echosounder multi function units

LCX series – From big game tournaments to leisure boating

BIG SCREEN

LCX-112C, 10,4"

A POPULAR LARGE-SCREEN CHOICE WITH SUPER VGA RESOLUTION.

- 16-bit color SVGA TFT SolarMAX™ with fluorescent cold-cathode screen-keypad backlighting
- Resolution: 600x800 pixel
- 8,000W, Max Depth 915 m
- NMEA 2000® compatible



NEW



LCX-37C, 8,4"

A NEW MID-SIZE, HIGH-DETAIL SUPER VGA CHOICE IN LARGE-FORMAT DISPLAY.

- 16-bit color SVGA TFT SolarMAX™ with fluorescent cold cathode screen-keypad backlighting
- Resolution: 600x800 pixel
- 8,000W, Max Depth 915 m
- NMEA 2000® compatible



NEW



LCX-27C, 7"

A COMFORTABLE DISPLAY WITH EYE-CATCHING VGA COLOR RESOLUTION.

- 16-bit color SVGA TFT SolarMAX™ with fluorescent cold cathode screen-keypad backlighting
- Resolution: 480x640 pixel
- 8,000W, Max Depth 915 m
- NMEA 2000® compatible



NEW



LCX and LMS Common Features

GPS/MAPPING

- 12 Parallel Channel GPS+WASS Antenna
- New red connectors to easily add NMEA 2000® certified products to the network
- Radar compatibility
- Ethernet port for Cameras etc*
- NMEA 0183 Output for DSC VHF etc
- 1,000 Waypoints, 100 Routes
- 42 Graphic Icons
- Custom Overlay Data - Digital or Analogue
- Custom Window Resizing
- Up to 100 Savable/Retraceable Plot Trails
- SD/MMC Card Slot(s) for Electronic Charts/Maps

* will become available in 2007

GENERAL

- SD/MMC Card Slot(s) for Recording GPS Trip Details
- Screen/Keypad Cover
- Sealed & Waterproof
- Free menu software update

ECHOSOUNDER

- Choice of Single or Dual Frequency Models
 - Single Frequency = 200 kHz
 - Dual Frequency = 50 & 200 kHz
- Transom Mount Transducer as Standard but Optional through hull,
- Shoot through hull Available
- Digital signal processing – ASP™
- Record and play back
- Exclusive echosounder recording and playback capability

LMS series – Maximum info in minimum size

5" SCREEN

LMS-522C iGPS COLOR DISPLAY

- Internal GPS Antenna
- 16-bit color TFT Display
- 480Vx480H Pixel resolution
- 2,400W, Max depth 270m
- NMEA 2000® compatible

LMS-520C

- As Above With External GPS/WAAS/Egnos Antenna



NEW



LMS-527C iGPS DF DUAL FREQUENCY COLOR DISPLAY

- Internal GPS
- 16-bit color TFT Display
- 480Vx480H Pixel resolution
- 4,000W, Max depth 750 m
- NMEA 2000® compatible

LMS-525C DF

- As Above With External GPS/WAAS/Egnos Antenna



NEW



LMS-480M & LMS-480M DF DUAL FREQUENCY GREYSCALE

- 16 Level Greyscale
- 480Vx 480H Pixel Resolution
- NMEA 2000® compatible

LMS-480M

- 4,000W, Max Depth 300m

LMS-480M DF

- 4,000W, Max Depth 750m

NEW



**M52i S/GPS 4" GREYSCALE
EASY QUICK MOUNT**

- 16 Level Greyscale
- 240Vx 160H Pixel Resolution
- 12 Channel Internal GPS
- 1,000 Waypoints, 100 Routes
- NMEA 0183 Output
- 200kHz Transom Mount Txdr.
- 800W, Max Depth 183 m



No mark ever missed, no man ever lost.

BackTrack waypoint feature allows to drop waypoint on the echosounder reading, never miss the mark that went past the screen!



Chartplotters



The only name in GPS plotters that gives you SolarMAX™

The line-up for 2007 reflects the results of the ongoing screen development programme for Lowrance chartplotters. With the latest advances in their super-high resolution, sunlight readable, 16-bit color SolarMAX™ TFT, SVGA screens now available for the first time. These developments bring ever-greater picture clarity across the range, offer even wider viewing angles and breath-taking resolution in all light conditions.

The Lowrance chartplotters were early adapters in bringing GPS to the public, and their history goes back to 1992. Since then the Lowrance chartplotters have been leading in advancing new and helpful GPS features, functions, cartography, easy use and reliability.





Chartplotters

GlobalMap® – split screen for simultaneous detailed position information and route planning

SAME FUNCTION – SCREEN SIZE TO MATCH YOU NAVIGATION NEEDS

GLOBALMAP® 9200C 10,4"



NEW

- 16-bit color Sunlight Viewable SVGA TFT Screen
- 600Vx 800H Pixel Resolution
- Radar compatible
- NMEA 2000® compatible



GLOBALMAP® 8200C, 8,4"



NEW

- 16-bit color Sunlight Viewable SVGA TFT Screen
- 600Vx 800H Pixel Resolution
- Radar compatible
- NMEA 2000® compatible



GLOBALMAP® 7200C, 7"



NEW

- 16-bit color Sunlight Viewable VGA TFT Screen
- Exceptional 480Vx 640H Pixel Resolution
- Radar compatible
- NMEA 2000® compatible



GLOBALMAP® 5200C, 5"



NEW

- External GPS/WAAS Antenna
- 16-bit color Sunlight Viewable SVGA TFT Screen
- 480Vx 480H Pixel Resolution
- Radar compatible
- NMEA 2000® compatible

5300C/iGPS

As Above with internal GPS/WAAS Antenna



Visit www.lowrance.com and download your free Product Emulator. Insert your Navionics MMC card into your Lowrance MMC Card Reader and create waypoints and routes from the comfort of your living room ready for you next adventure.

GlobalMap® – great display for detailed information

5" SCREEN

GLOBALMAP® 5150C

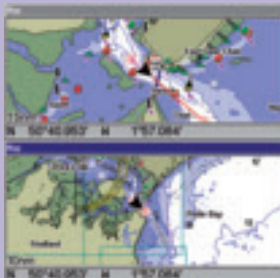
- 16-bit color Sunlight Viewable TFT Screen
- Brilliant 640V x 480H Pixel Resolution
- Supplied with NauticPath™ Europe West Chart
- NMEA 0183 Output For DSC VHF etc

NEW



GLOBALMAP® 4800M

- High Contrast 16 Level Grey Display
- 480Vx 480H Pixel Resolution
- NMEA 2000® compatible



NauticPath™

Optional split screen for details and full overview.



NAVIGATION SCREEN

COMMON FEATURES:

- 12 Parallel Channel GPS+WASS Antenna
- New red connectors to easily add NMEA 2000® certified products to the network
- Radar compatibility*
- Ethernet port for Cameras etc*
- 1,000 Waypoints, 100 routes with up to 100 Waypoints per route
- 42 Graphic Icons
- Custom Overlay Data - Digital or Analogue
- Custom Window Resizing
- Up to 100 Savable/Retraceable Plot Trails
- Up to 10,000 Points per Trail
- SD/MMC Card Slot(s) for Electronic Charts* */Maps
- SD/MMC Card Slot(s) for Recording GPS Trip Details
- Screen/Keypad Cover
- Sealed & Waterproof

* Option not available on the GM5150c

All units accept NauticPath™ and Navionics® charts.



Echosounders



Excellence – fish and bottom detection

The Lowrance echosounders were the world's first high frequency transistorized echosounders designed and built for sports fishing and boating. They were released for the first time in 1957. Ever since, Lowrance echosounders have been at the forefront of design and can be credited with many "firsts" during this time.

An exceptional high speed bottom tracking up to 61 knots, and automatic bottom tracking and range change without disrupting the echosounder reading. It also includes exceptional target and bottom discrimination for superior fishfinding and bottom feature detection to depth down to 750 metres.

Suitable for everyone from serious anglers to dedicated sport fishers. Or really anyone who demands the best in innovation, target detail/separation and trusty total echosounder performance at the best price.





Echosounders

X series - excellent fish and bottom detection

5" SCREEN

NEW

X510C/X515C DF

- 16-bit color TFT Screen
- 480V x 480H Pixel Resolution
- Max Depth 270 m/750 m
- NMEA 2000® compatible



X135/X136 DF

- 16 Level Greyscale
- 480V x 480H Pixel Resolution
- Max Depth 300 m/750 m
- NMEA 2000® compatible



X125/126 DF

- 16 Level Greyscale
- 480V x 480H Pixel Resolution
- Max Depth 270 m/510 m



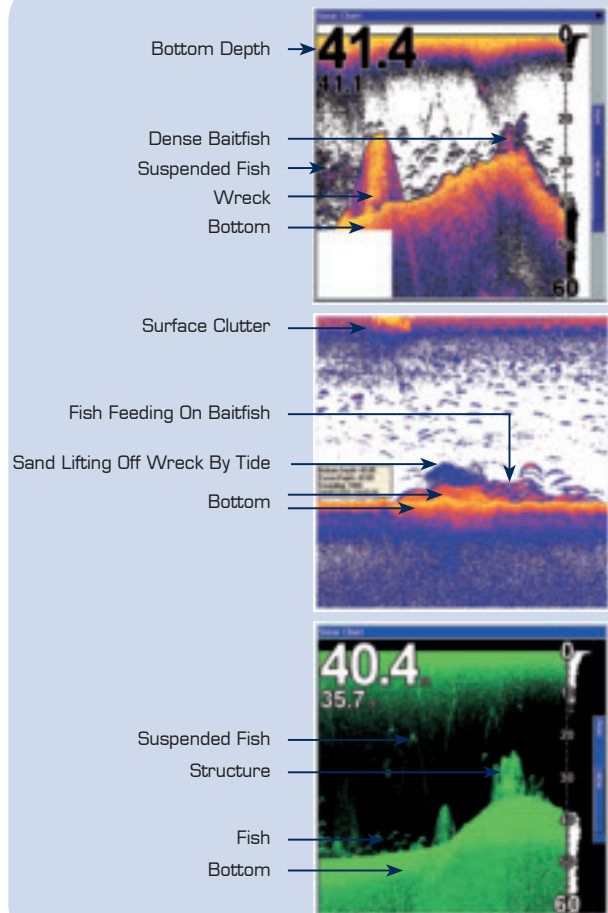
X96

- 16 Level Greyscale
- 320V x 320H Pixel Resolution
- Max Depth 240 m



COMMON FEATURES:

- Patented GRAYLINE® or COLORLINE™ which separates Fish & Important Structures on or near the bottom from the bottom
- Advanced Receiver Design for Enhanced Sensitivity & Target Detail with Greater Resistance to Electrical Interference
- Advanced Signal Processing using ASP™ for the best picture in virtually all fishing situations
- Multi-Zoom Options
- Transom Mount Transducer as Standard but Optional through hull, shoot through hull available
- Superior Screen Control with a wide variety of settings including Pre-set Display Modes
- Simplified Menus - Drop Down Menu similar to PC
- Waterproof





SPECIALTY & COMPACT FISHFINDERS

X86 DS , 4,5"

DUAL SEARCH FOR BETTER FISH DETECTION

- 4 Level Greyscale
- 240V x 240H Pixel Resolution
- 200kHz Transom Mount Txdr.
- Max Depth 300 m



X50 DS, 4"

DUAL SEARCH FOR BETTER FISH DETECTION

EASY QUICK MOUNT

- 4 Level Greyscale
- 240V x 160H Pixel Resolution
- Max Depth 300 m



X52/X59 DF 4" COMPACT

- 16 Level Greyscale
- 240V x 160H Pixel Resolution
- Max Depth 180 m/450 m



X67C 3,5" COMPACT COLOR

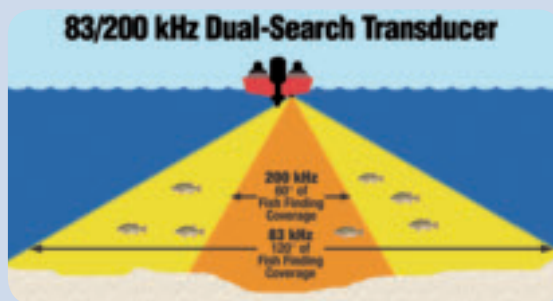
EASY QUICK MOUNT

- 16-bit color TFT
- 320V x 240H Pixel Resolution
- 200kHz Transom Mount Txdr.
- Max Depth 180 m

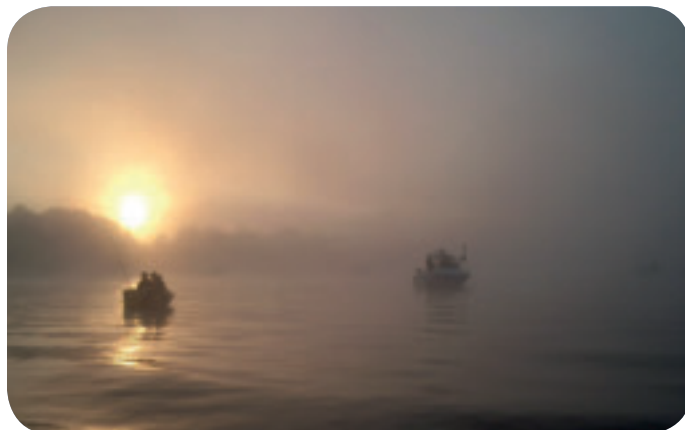


DUAL SEARCH 83 200KHZ ECHOSOUNDERS

Lowrance Dual-Search (DS) 83/200 kHz technology produces the best in expanded echosounder excellence, thanks to new applied technology in an incredibly easy-to-use and easy-to-afford complete echosounder package.



QUICK MOUNT





A new era of convenience and simplicity

LowranceNET™ - does for Marine Electronics what Microsoft did for personal computers.

From a single Lowrance display you can call up and view every piece of information generated by any NMEA 2000® device connected to the network, regardless of brand.

LowranceNET™ introduces a new era of convenience and simplicity - no more complicated wiring, can be fitted in just a few hours, and you just plug in your chosen NMEA 2000® compatible equipment and turn it on for instant results.

Navigation equipment, outboard motors, instrumentation NMEA 2000® is out there waiting to make your life simpler.

LOWRANCENET™ ELECTRONIC PROBES (EPS)

For use with all compatible data-sharing networks are an advanced and innovative array of NMEA-2000® certified Electronic Probe sensors. Each EP has its own built-in microprocessor "smart module" that transmits its monitored data (e.g. water temp, speed, fuel flow, etc.) in the NMEA 2000® format. The data travels through the network "backbone" to every device installed within the network for data display — such as LMF multi-function gauges, and a host of Lowrance sonar/GPS head units. Plus, each EP is fully programmable for the greatest accuracy in data delivery and includes T-connector and 10' cable for network installation.

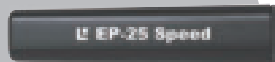
EP-10 FUEL FLOW
- Petrol, one per engine



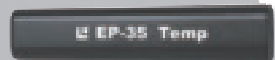
EP-15 FUEL LEVEL
- Petrol, oil and water



EP-25 SPEED
- Paddle wheel speed



EP-35 TEMPERATURE
- Water, livewell etc



Imagine that the engine and other electronic equipment can communicate with your Lowrance units – its happening!



NMEA 2000® DEVICE



NMEA 2000® ENGINE





EXAMPLE OF DATA AVAILABLE FROM NMEA 2000® DEVICES:

- Wind Speed
- Wind Direction
- Barometric Pressure
- Depth
- Water Speed
- Water Temperature

EXAMPLE OF DATA FROM OUTBOARD ENGINES:

- Engine Rev's
- Fuel Economy
- Oil Pressure
- Engine Trim
- Engine Hours
- Engine Temperature

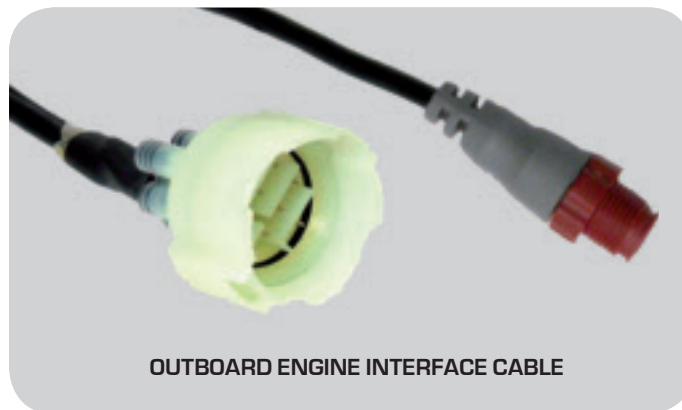
**LowranceNET™ & NMEA 2000®:
CONVENIENT, UNCOMPLICATED AND COST EFFECTIVE**

LOWRANCE FUEL MANAGEMENT SYSTEM – WHAT IT CAN DO FOR YOU

You already know that reducing the revs by even a small amount on your outboard engine can have a significant impact on your fuel consumption, but were you aware of just HOW MUCH?

Tests performed last year* with a Suzuki V6 250 showed that a reduction in revs from 5,000 to 4,000 rpm caused a fall in fuel consumption from 44 litres per hour to just 18 litres an hour, and for a modest reduction in speed. With a Lowrance Fuel Management System installed you can watch yourself make big savings.

The gains are also significant for smaller engines at lower revs, so be kind to your wallet and the environment and invest in a Lowrance Fuel Management System. The system works with Suzuki, Evinrude and Yamaha outboard motors.



* The tests were carried out by RIB International Magazine on a Ballistic 7.8m/ four-man crew and showed that the cable investment was paid for after running 20 hours.



Transducers

High performance transducers – fits any boat

Lowrance offers a wide selection of transducers to accommodate your Lowrance echosounder, your boat, your type of fishing, and especially, your enjoyment in superior shallow and deep-water performance.

EXCLUSIVE SKIMMER® TRANSDUCERS

Popular and proven, the patented hydrodynamic design of high-speed Skimmer® transducers offer the smoothest flow through water without sonar-interfering bubbles. So you get the best sounding performance and cleanest echosounder readings, even at boat speeds up to 70 mph/61 kts. Perfect for even aluminum- and steel-hull boats, Skimmer® transom-mount transducers include a built-in sensor for water surface temp, and feature a special “kick-up” bracket to help prevent accidental strike damage. Recommended for outboard and stern-drive (I/O) powered boats.

200 KHZ SKIMMER® TRANSMOUNT

Perfect for inland freshwater and shallower in-shore coastal saltwater fishfinding. Features built-in temp sensor and up to 60° of effective fish detection coverage when using high sensitivity settings. Can also be used for shoot-thru sounding (without temp readings) on solid fiberglass hulls with proper installation.



200 KHZ SKIMMER® PORTABLE

Great for go-anywhere fishfinding portability, and a handy option for IceMachine™ portables. Includes easy-mounting suction cup bracket. Features up to 60° of wide fish detection coverage, and built-in temp sensor. Not for high-speed use.



50/200 KHZ SKIMMER® TRANSMOUNT

Specially designed for salt water or downrigger tracking with built-in temp sensor, and up to 90° of effective fish detection coverage with 50 kHz – and up to 40° with 200 kHz – using high sonar sensitivity settings. Not for shoot-thru-hull installation.

VERSATILE 200 KHZ POD TRANSDUCER OPTIONS

Super underwater coverage with the flexibility of trolling motor mount, or shoot-thru-hull installation on solid fiberglass hulls. Contour curve top and slots for hose clamp make motor-mounting easy. Available with or without built-in temp sensor, all offer a wider fish detection coverage area with high sonar sensitivity settings.



HIGH PERFORMANCE THRU-HULL TRANSDUCERS

Lowrance also offers a wide selection of bolt-thru-hull transducers designed for ultimate deep-sounding performance while reducing or eliminating drag. Choose from 50/200 kHz dual-frequency bronze transducers including high-power, multi-element models with optional high-speed fairing blocks... to a 200 kHz plastic flange-mount for steel or aluminum hulls.



Radar

Exceptional radar performance

Lowrance now delivers advanced performance and choices in X-Band radar. Each offers outstanding features such as Interference Rejection up to 3 levels, FTC rain clutter rejection, STC sea clutter rejection and Gain Adjustment up to 256 levels each. Range scales provide coverage from a 1/8 nm minimum scale to 24, 36, or 48 nm maximum range* scales. All five models feature Automatic Tuning and offer 7 levels of Trail Settings functions. Plus, Lowrance radar uniquely offers EBL/VRM tracking for up to 3 targets, and a selectable safety zone off mode.

*Radar range depends on fog, rain and other atmospheric conditions.

RADOME SCANNER

LRA-1000

- 2kW, 1' Radome Module
- 7° Horizontal Beamwidth, 25° Vertical Beamwidth
- Up to 16nm Range

LRA-1500

- 2kW, 1.5' Radome Module
- 4.7° Horizontal Beamwidth, 25° Vertical Beamwidth
- Up to 24nm Range

LRA-2000

- 4kW, 2' Radome Module
- 4° Horizontal Beamwidth, 25° Vertical Beamwidth
- Up to 36nm Range



OPEN SCANNER

LRA-4000

- 4kW, 4' Open Ray
- 2.4° Horizontal Beamwidth, 25° Vertical Beamwidth
- Up to 48nm Range

LRA-5000

- 4kW, 5' Open Ray
- 1.7° Horizontal Beamwidth, 25° Vertical Beamwidth
- Up to 48nm Range





Instruments

Advanced data information or simple temperature readings.

From simple display gauge to multi-function NMEA 2000® capable data displays, the Lowrance instruments will bring info to your dashboard – alone or in a network.



LowranceNET™ Multi-function Gauges

SAME FUNCTION - TWO SIZES

LMF-400/200

Advanced multi-function, high-contrast round dot matrix gauges display graphic and numerical digital data. Each are NMEA 2000® data communications compatible, and connect within a high-performance LowranceNET™ network. Displays real-time readings from an array of compatible electronic probes like

- Fluid level
- Temp
- Speed

Featuring advanced LED backlighting, with connectivity to a remote speaker for alarms.



RELIABLE IN DASH DIGITALS

LCF-1440 LCD FLASHER

Add a dash of real-time fishfinder performance in this digital LCD flasher that offers more features, easy in-dash fit, better viewing, temp readings, plus superb high-speed operation with glare-free viewing, all at a great price.

- 200 kHz transom-mount Skimmer® transducer w/temp sensor and up to 60° fish detection coverage
- 800 w peak-to-peak / 100 w RMS; depths to 600' / 183 m*
- 7 Auto and Manual depth ranges: 10', 20', 40', 80', 160', 320' and 640'
- Automatic Advanced Signal Processing (ASP™) operation



LST-3800 DIGITAL DEPTH/TEMP

The next generation of Lowrance sonar digitals for reliable digital depth display, now with temp readings. Perfect for both inland and inshore coastal boaters.

LST-3800 without transducer

- High-contrast dot matrix display with advanced LED backlighting
- 200 kHz transom-mount Skimmer® transducer w/temp sensor
- Depths to 700' / 213 m*
- Shallow and deep depth alarms
- Temp readings to nearest 0.1° F
- Compact size fits standard 2-1/8" (55 mm) dia. hole



NEW

LDT-3200 DIGITAL TEMP

Precise, sensitive water surface temp digital readings in an attractive, compact gauge.

- Display: 2.5" / 6.3 cm diag. Film SuperTwist full dot matrix, 4-level gray scale with white LED screen-keypad backlighting
- Resolution: 132x132 pixel
- Case WxD: 3.8 x 3.5 in. / 9.7 x 9.1 cm





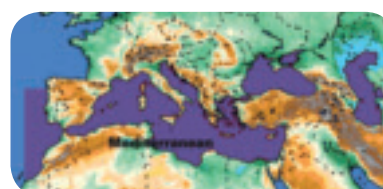
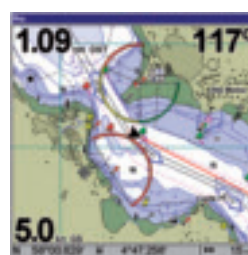
Cartography
Lowrance NauticPath™ International



Lowrance have recently launched NauticPath™ Charts for Europe and the rest of the World. Unbelievable coverage, excellent detail combined at an awesome price. Combine NauticPath with the outstanding Lowrance 16-bit color TFT displays for the best possible packages available on the market today

When going global, you can experience the same high-level NauticPath™ offshore/coastal navigational electronic chart detail and information, with worldwide coverage choices, at an affordable price point compared to any other. Each NauticPath™ International choice is preloaded on MMC/SD memory card for plug-&-play convenience with your compatible Lowrance GPS equipped with a memory card slot. For exhibits on individual chartcard coverage areas, visit the Mapping/Charts area of the Lowrance website.

- NP-Caribbean
- NP-Central America/West
- NP-South America
- NP-Europe West
- NP-Europe North
- NP-Mediterranean
- NP-Africa/MiddleEast/India
- NP-SEAsia/PacificIsland
- NP-Australia/NewZealand
- NP-Japan/East Asia



NauticPath
Mediterranean



Handheld Navigation

Wherever you go, track your route and find your position

Lowrance has been a world leader in the design, manufacture and marketing of high-quality instruments for the Outdoor & Marine enthusiast for 50 years.

Continue the heritage of innovation, Lowrance current range of Handheld GPS's offers a product suitable for every application.

Whether you want basic navigation the compatibility of high detail maps and charts, marking important spots, or sing along to your favorite tunes, Lowrance has a GPS for you.

Choose 'Easy' or 'Advanced' Mode for more or less features.

NEW TO GPS?

'Easy' Mode makes it quicker to get started with simple functions like "One Touch Waypoint"

GPS PRO?

'Advanced' Mode allows access all the latest features you would expect including Routes, Data Transfer



Get up and go

iFINDER® GO

- 16 channel GPS -WAAS & EGNOS
- 2" diagonal display size
- 200 x 140 pixel resolution
- 16 level greyscale screen
- 1,000 Waypoints, 100 routes
- Over 48 hrs on 2 x AA battery
- Waterproof to IPX-7
- PC compatible
 - upload waypoints from programs like Memory Map
- Size (mm): 131H x 54W x 32D
- Weight: 152g with batteries
- NMEA 2000® compatible



*CHARTS



NauticPath™

Detailed Lowrance cartography on optional SD card

*CHARTS



NAVIONICS Gold

Detailed Marine cartography on optional SD card

** MAPS



Freedom Maps

Detailed roads, rivers available on optional SD card*

*Do not cover Asia and The Pacific

*** PC



memory-map™

Upload waypoints, routes to GPS & download tracks to PC to review where you've been via SD card.

On the water

iFINDER® H2OC

- Basic model displays common features
- Grayscale



iFINDER® H2OC

- Basic model displays common features
- Color



Hiking or biking

iFINDER EXPLORER™

- Scout Mode – Maps borders / perimeters
- Electronic compass, barometer & altimeter
- Comes with 12V operation cord



iFINDER EXPEDITION™ C

- Scout Mode – Maps borders / perimeters
- Electronic compass, barometer & altimeter
- Comes with 12V operation cord
- MP3 player
- Voice note



Hunting

iFINDER® HUNT

- Voice note
- Scout Mode – Maps borders/perimeters
- Electronic compass, barometer & altimeter
- Comes with 12V operation cord
- MP3 player
- Exclusive, hunting-specific graphic icons



iFINDER® HUNTc

- Color display

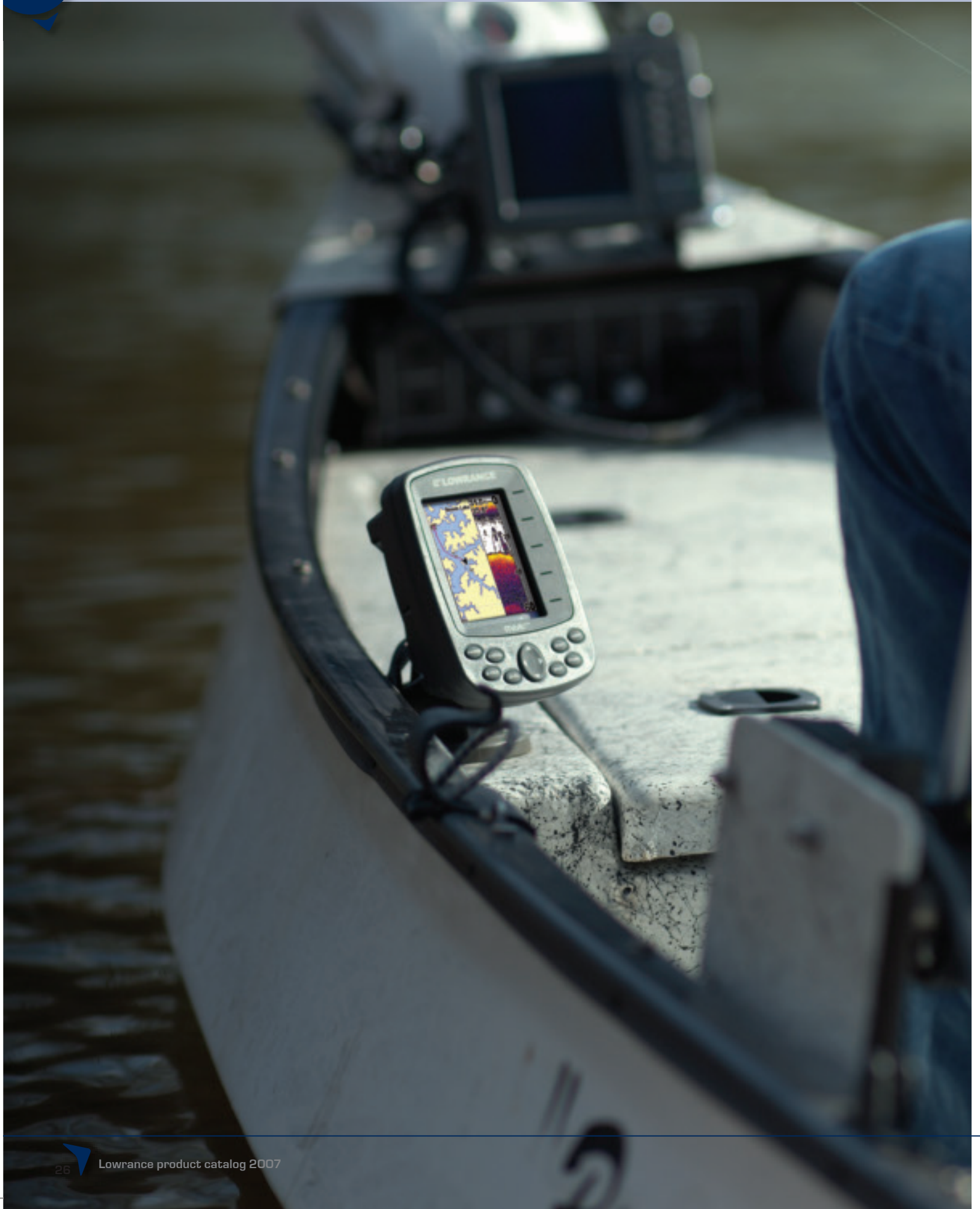


COMMON FEATURES:

- Grayscale: 12 channel GPS receiver – WAAS, 240 x 180 pixel resolution, 16 level grayscale screen
- Color: 16 channel GPS receiver – WAAS, 320 x 240 pixel resolution, 16-bit color TFT screen
- 3" diagonal display size
- 1000 Waypoints
- 100 Routes
- Accepts charts, maps & PC
- Waterproof to IPX-7
- NMEA 0183 Out./In
- Size (mm): 142H x 65W x 30D
- Weight: 247g with batteries



Technical specifications



CHARTPLOTTER/ECHOSOUNDER MULTI FUNCTION UNITS

Echosounder functions:

							
Echosounder Detail	LCX-112c	LCX-37c	LCX-27c	LMS-522c iGPS/520c	LMS-527c iGPS DF/525c DF	LMS480/LMS480m DF	M52i S/GPS
Display	10,4"	8,4"	7"	5"	5"	5"	4"
Resolution	600x800	600x800	480x640	480x480	480x480	480x480	240x160
Backlighting	Fluorescent Cold Cathode Screen-Keypad	Fluorescent Cold Cathode Screen-Keypad	Fluorescent Cold Cathode Screen-Keypad	Fluorescent Cold Cathode Screen-Keypad	Fluorescent Cold Cathode Screen-Keypad	White LED Screen -Keypad	White LED Screen -Keypad
Power	Up to 1.000 Watts RMS (8.000 Watts peak-to-peak)	Up to 1.000 Watts RMS (8.000 Watts peak-to-peak)	Up to 1.000 Watts RMS (8.000 Watts peak-to-peak)	300 Watts RMS (2.400 Watts peak-to-peak)	500 Watts RMS (4.000 Watts peak-to-peak)	500 Watts RMS (4.000 Watts peak-to-peak)	100 Watts RMS (800 Watts peak-to-peak)
Frequency	50/200kHz	50/200kHz	50/200kHz	200kHz	200kHz/50/200kHz	50/200kHz	200kHz
Depth	900m	900m	900m	270m	700m DF	300m/750m DF	180M
Water temp	Standard w/select transducers	Standard w/select transducers	Standard w/select transducers	Standard w/select transducers	Standard w/select transducers	Standard w/select transducers	Standard w/select transducers
Speed/distance	Standard w/50/200kHz Packs only	Standard w/50/200kHz Packs only	Standard w/50/200kHz Packs only	Optional	Standard w/select transducers	Standard w/50/200kHz DF Packs only	Optional
Key Features	COLORLINE™ ASP™, Split-Screen, Zoom, Hyper-Scroll, Digital Record, NMEA 2000®	COLORLINE™ ASP™, Split-Screen, Zoom, Hyper-Scroll, Digital Record, NMEA 2000®	COLORLINE™ ASP™, Split-Screen, Zoom, Hyper-Scroll, Digital Record, NMEA 2000®	COLORLINE™ ASP™, Split-Screen, Zoom, Hyper-Scroll, FishReveal Digital Record, NMEA 2000®	COLORLINE™ ASP™, Split-Screen, Zoom, Hyper-Scroll, FishReveal Digital Record, NMEA 2000®	GRAYLINE® ASP™, Split-Screen, Zoom, Hyper-Scroll, FishReveal Digital Record, NMEA 2000®	GRAYLINE® ASP™, Split-Screen, Zoom, Hyper-Scroll, Digital Record,
Alarm	Deep/shallow/Fish/Zone	Deep/shallow/Fish/Zone	Deep/shallow/Fish/Zone	Deep/shallow/Fish/Zone	Deep/shallow/Fish/Zone	Deep/shallow/Fish/Zone	Deep/shallow/Fish/Zone
	231x310x94 mm	198x269x94 mm	185x244x94 mm	138x176x86 mm	138x176x86 mm	138x176x86 mm	147x108x66 mm

GPS/Chartplotter functions:

GPS receiver	12-Parallel Channel (GPS-WAAS)	12-Parallel Channel (GPS-WAAS)	12-Parallel Channel (GPS-WAAS)	12-Parallel Channel (GPS-WAAS)	12-Parallel Channel (GPS-WAAS)	12-Parallel Channel (GPS-WAAS)	12-Parallel Channel (GPS-WAAS)
GPS antenna	External	External	External	Internal/External	Internal/External	External	Internal
Key Features	2 slots for MMC/SD digital memory cards to record GPS trip details & ewchosounder graphs, tp display plug-&-play electronic chart options NMEA 2000®	2 slots for MMC/SD digital memory cards to record GPS trip details & ewchosounder graphs, tp display plug-&-play electronic chart options NMEA 2000®	2 slots for MMC/SD digital memory cards to record GPS trip details & ewchosounder graphs, tp display plug-&-play electronic chart options NMEA 2000®	1 slot for MMC/SD digital memory cards to record GPS trip details & ewchosounder graphs, tp display plug-&-play electronic chart options NMEA 2000®	1 slot for MMC/SD digital memory cards to record GPS trip details & ewchosounder graphs, tp display plug-&-play electronic chart options NMEA 2000®	1 slot for MMC/SD digital memory cards to record GPS trip details & ewchosounder graphs, tp display plug-&-play electronic chart options NMEA 2000®	GRAYLINE® ASP™, Split-Screen, Zoom, NMEA 0183®
Position Points	Up to 1.000 waypoints & 1.000 event markers	Up to 1.000 waypoints & 1.000 event markers	Up to 1.000 waypoints & 1.000 event markers	Up to 1.000 waypoints & 1.000 event markers	Up to 1.000 waypoints & 1.000 event markers	Up to 1.000 waypoints & 1.000 event markers	Up to 1.000 waypoints & 1.000 event markers
Routes/Trails	Up to 100 routes & plot trails	Up to 100 routes & plot trails	Up to 100 routes & plot trails	Up to 100 routes & plot trails	Up to 100 routes & plot trails	Up to 100 routes & plot trails	Up to 100 routes & plot trails
Zoom	37 range (0,05-4.000 nm)	37 range (0,05-4.000 nm)	37 range (0,05-4.000 nm)	40 range (0,02-4.000 nm)	40 range (0,02-4.000 mnm)	38 range (0,04-4.000 nm)	40 range (0,02-4.000 nm)

CHARTPLOTTERS



	GlobalMap 9200C	GlobalMap 8200C	GlobalMap 7200C	GlobalMap 5200C/ 5300C iGPS	GlobalMap 5150C	GlobalMap 4800M
Display	10,4" 16-bit color TFT SVGA	8,4" 16-bit color TFT SVGA	7" 16-bit color TFT VGA	5" 16-bit color TFT iGPS	5" 16-bit color TFT	5" Film Super Twist
Resolution	600x800	600x800	480x640	480x480	480x480	640x480
Receiver	12-Parallel Channel	12-Parallel Channel	12-Parallel Channel	12-Parallel Channel	12-Parallel Channel	12-Parallel Channel
Antenna	External	External	External	External / Internal	External	External
Speed & Distance	Optional	Optional	Optional	Optional	Optional	Optional
Key Features	2 slots for MMC/SD digital memory cards to record GPS trip details & display plug-&-play electronic chart options NMEA 2000®	2 slots for MMC/SD digital memory cards to record GPS trip details & display plug-&-play electronic chart options NMEA 2000®	2 slots for MMC/SD digital memory cards to record GPS trip details & display plug-&-play electronic chart options NMEA 2000®	1 slot for MMC/SD digital memory cards to record GPS trip details & display plug-&-play electronic chart options NMEA 2000®	1 slot for MMC/SD digital memory cards to record GPS trip details & display plug-&-play electronic chart options NMEA 2000®	1 slot for MMC/SD digital memory cards to record GPS trip details & display plug-&-play electronic chart options NMEA 2000®
Position points	Up to 1.000 waypoints & 1.000 event markers	Up to 1.000 waypoints & 1.000 event markers	Up to 1.000 waypoints & 1.000 event markers	Up to 1.000 waypoints & 1.000 event markers	Up to 1.000 waypoints & 1.000 event markers	Up to 1.000 waypoints & 1.000 event markers
Routes/Trails	Up to 100 routes & plot trails	Up to 100 routes & plot trails	Up to 100 routes & plot trails	Up to 100 routes & plot trails	Up to 100 routes & plot trails	Up to 100 routes & plot trails
Zoom	0,05-4000nm	0,05-4000nm	0,05-4000nm	0,02-4000nm	0,02-4000nm	0,04-4000nm
Dimensions	231X310X94mm	198X269X94mm	173X236X94mm	138X176X86mm	138X176X86mm	138X176X86mm

ECHOSOUNDERS



	X515cDF/510c	X136DF/X135	X126DF/X125	X96	X50DS/X86DS	X59DF/X52	X67c
Display	5" 16-bit color TFT	5" 16 level Grayscale	5" 16 level Grayscale	5" 16 level Grayscale	4" / 4,5" 16 level Grayscale	4" 16 level Grayscale	3,5" 16-bit color TFT
Resolution	480x480	480x480	480x480	320x320	240x460/240x240	240x160	320x240
Power	4.000/2.400W peak-to-peak 500/300W RMS	2.400W peak-to-peak 300W RMS	800/2.400W peak-to-peak 100/300W RMS	1.500W peak-to-peak 188W RMS	1.500W peak-to-peak 188W RMS	2.400/1.500W peak-to-peak 300/188W RMS	2.400W peak-to-peak 300W RMS
Frequency	50/200kHz/ 200kHz	50/200kHz/ 200kHz	50/200kHz/ 200kHz	200 kHz	*83/200 kHz (dual search)*	20/200kHz/ 200kHz	200 kHz Freshwater or saltwater packs
Depth	750m/270m	750m/300m	510m/270m	240m	300m/300m	450m/150m	180m
Temperature	Standard (w/select transducers)	Standard (w/select transducers)	Standard (w/select transducers)	Standard (w/select transducers)	Standard (w/select transducers)	Standard (w/select transducers)	Standard (w/select transducers)
Speed & Distance	Standard (w/select transducers) /Optional	Standard (w/select transducers) /Optional	Standard (w/select transducers) /Optional	Optional	Optional	Standard (w/select transducers) /Optional	Optional
Alarm	Deep/Shallow/ Fish/Zone	Deep/Shallow/ Fish/Zone	Deep/Shallow/ Fish/Zone	Deep/Shallow/ Fish	Deep/Shallow/ Fish	Deep/Shallow/ Fish	Deep/Shallow/ Fish
Key Features	COLORLINE™ ASP®, Split-Screen Zoom, Hyper-Scroll FishReveal NMEA 2000®	GRAYLINE™ ASP®, Split-Screen Zoom, Hyper-Scroll FishReveal NMEA 2000®	GRAYLINE™ ASP®, Split-Screen Zoom, Hyper-Scroll FishReveal	GRAYLINE™ ASP®, Split-Screen Zoom, Hyper-Scroll FishReveal	GRAYLINE™ ASP®, Split-Screen Zoom, Hyper-Scroll FishReveal	GRAYLINE™ ASP®, Split-Screen Zoom, Hyper-Scroll FishReveal NMEA 2000®	GRAYLINE™ ASP®, Split-Screen Zoom, Hyper-Scroll FishReveal
Dimensions	138x176x86mm	136x176x86mm	136x176x86mm	136x176x86mm	147x108x66/ 138x176x86mm	132x136x66mm	147x108x66

HANDHELD NAVIGATION

				
	iFINDER® HuntC/Hunt	iFINDER Expedition™ C / Explorer™	iFINDER® H20C / H20	iFINDER® G02
Display	2,83", 256 color TFT/ 3" Film Super Twist	2,83", 256 color TFT/ 3" Film Super Twist	2,83", 256 color TFT/ 3" Film Super Twist	2" Film Super Twist
Resolution	320x240/240x180	320x240/240x180	320x240/240x180	200x140
Receiver	16-channel/12-channel GPS+WAAS	16-channel/12-channel GPS+WAAS	16-channel/12-channel GPS+WAAS	16-channel GPS+WAAS
External GPS Antenna	Optional	Optional	Optional	NO
Key Features	Compass, Barometer, Hunt Mode, Scout Mode, MP3, Voice Notes, 10 languages, NMEA 0183, Back-up memory	Compass, Barometer, Scout Mode, MP3, 10 languages, NMEA 0183, Back-up memory	10 languages, NMEA 0183, Back-up memory	10 languages, NMEA 0183, Back-up memory
Position points	Up to 2.000 waypoints & 1.000 event markers	Up to 2.000 waypoints & 1.000 event markers	Up to 2.000 waypoints & 1.000 event markers	Up to 2.000 waypoints & 1.000 event markers
Routes/Trails	Up to 100 routes & plot trails	Up to 100 routes & plot trails	Up to 100 routes & plot trails	Up to 100 routes & plot trails
Zoom	0,03 km - 8.000 km	0,03 km - 8.000 km	0,03 km - 8.000 km	0,02 km - 8.000 km
Dimensions	65x142x30 mm	65x142x30 mm	65x142x30 mm	54x131x31,5 mm
Battery Life	Up to 16/12 hours	Up to 14/12 hours	Up to 14/12 hours	Up to 50 hours
Weight	247 g	247 g	247 g	152 g

RADAR

					
	LRA 1000	LRA 1500	LRA 2000	LRA 4000	LRA 5000
Type	Radome	Radome	Radome	Open Array	Open Array
Size & Weight	30 cm/4kg	45 cm/6kg	60 cm/10kg	4 fot (1,2 m)	5 fot (1,5 m)
Output Power	2 kW	2 kW	4 kW	4 kW	4 kW
Range	16 NM	24 NM	36 NM	48 NM	48 NM
Beam width	7°/25°	4,7°/25°	4°/25°	2,4°/25°	1,7°/25°
Cable	10 m	10 m	10 m	10 m	10 m





For more information and world wide distribution,
visit www.lowrance.com or www.navico.com
HEAD OFFICE: Navico Norway AS, PO Box 274, 1353 Lysaker, Norway

