



**MARINE
ELECTRONIC
SERVICES
LTD**

**Marine Electronics
Buyer's Guide 2009**

Call Now! 01179 114111

NEW FOR 2009

RAYMARINE C SERIES WIDE

Raymarine update their popular combi displays with these fantastic widescreen units



**AFFORDABLE
SATELLITE TV!**

DigitalYacht's breakthrough new Digital Vision system is an affordable system, and with no subscription fees!



- THE LATEST PRODUCTS
- THE LOWEST PRICES, THE BEST DEALS
- EXPERT, UNBIASED ADVICE
- CALL 01179 114111 OR BUY ONLINE @ WWW.MESLTD.CO.UK

GARMIN GMI10 INSTRUMENTS

Take a closer look at this fantastic colour system - page 16



SAVE!

UNBEATABLE DEALS ON ALL THE LEADING BRANDS!

INNOVATIVE DESIGN

GARMIN 4000 & 5000 SERIES



Garmin have really raised the bar with their innovative range of combi displays - see them on pages 14&15

LOW COST PILOT

DIGITALYACHT DIGITAL PILOT



An affordable inboard pilot that doesn't compromise on performance

LOOK NO WIRES!

TACKTICK T033 WIND



Tacktick unveil their entry-level wireless wind system

PLUS OVER 500 OTHER GREAT PRODUCTS INSIDE!

JUST A SMALL SELECTION OF OUR FULL RANGE OF OVER 6,000 PRODUCTS VISIT WWW.MESLTD.CO.UK FOR THE LATEST PRICES AND SPECIAL OFFERS

THE MARINE ELECTRONICS BUYER'S GUIDE 2009



Welcome to our latest Buyer's Guide with hundreds of exciting new products including radars, plotters, autopilots, instruments and satellite communications. Over the past 20 years, Marine Electronic Services Ltd has grown to become Europe's leading specialist marine electronics supplier. Our philosophy of expert advice, a passion for customer service and competitive prices offers a winning combination – unmatched by any of our competitors. Our specialist advice and an unbiased selection make choosing the right electronics for your application even easier. Plus, our well stocked showrooms offer the biggest selection ever and the ability to compare products from the world's leading manufacturers. Most importantly, our team don't just answer the phone – they provide solutions and expert knowledge

Plus, with installation and service facilities in the UK and Europe, we're your first choice for a professional installation. Our two new offices in Poole and Chichester will look after all your S Coast installation needs and if you can't find an office close to you, take advantage of our mail order and export facilities - fast despatch to anywhere in the world at globally competitive prices. The choice is yours - call in, call up or click on our online store www.mesltd.co.uk - your route to a better marine electronics solution.

Finally, remember that what you see here is just a selection of our 6000+ product line - if it works on wires and fits on boats, then we like to think we do it!

Good Boating!

NICHOLAS HEYES
Managing Director



© 2009 Marine Electronic Services Ltd. The information in this catalogue is correct at the time of going to press, using specifications supplied by the manufacturers. However, products are constantly being updated, hence MES can accept no responsibility for any errors in the description of any of the products featured in this catalogue.

i By Manufacturer

Jeppesen Marine (C-Map)	34-35
DigitalYacht	38-41
Digital Vision	40
EasyAIS	21
Echopilot	31
Furuno	23-25
Garmin	11-17
Icom	44-45
Intellian	36
Iridium	46
KVH	28
Lowrance	18
Marine Pods	37
M B Quart	29
McMurdo	30
Moerer	21
NASA	19
Navionics	32-33
Nobeltec	41
Northstar	26-27
Raymarine	3-10
Scanstrut	20
SeaMe	29
Simrad	26
Standard Horizon	42-43
Tacktick	22
Thrane & Thrane	46
Thuraya	46
Vesper Marine	21
V-Tronix	44

i By Product

Active Radar Reflector	29
AIS	4, 19, 21, 39
Antenna Mounts	20
Autopilots - Cockpit	6
Autopilots - Inboard	7, 16, 25, 41
Cameras	5
Cartography	12, 32-35
Chartplotters	3-6, 13-15, 18, 23-24, 26-27, 39, 43
Combi Units	3-6, 14-15, 18, 23-24, 26-27, 39, 43
Entertainment	29
EPIRBs	30
Fishfinders	3-6, 13-15, 17-18, 23-27
Forward Looking Sounders	31
GPS - Fixed	24, 39
GPS - Handheld	11
Instruments	9, 16, 19, 22, 41
Loudspeakers	36
Marine Monitors	5, 38
Marine Pods	20, 37
Navtex	19, 21, 24, 30
PC Software	10, 24, 39, 41
PC Systems & Peripherals	12, 38
PLBs & SARTS	30
PMR Radios	44
Radars	3-6, 14-15, 18, 23-27, 39
Satcoms/Satellite Internet	28, 46
Satellite Compass	25
Satellite TV	8, 28, 36, 40, 46
Satnav	11, 13
SSB Radios	19, 45
VHF - Fixed	8, 16, 25
VHF - Handheld	6, 42, 44
VHF Antennas	44
Weather Receivers	4, 19, 39
WiFi	38

C Series & A Series Displays

RAYMARINE C SERIES WIDESCREEN

9, 12 & 14in Colour Combi Displays



The all new C Series Widescreen expands the capabilities of the original multifunction display with larger, brilliant displays, increased performance, expanded networking and video integration. Available in 9, 12 and 14in display sizes the new C Series now offers dual station networking capability, a high sensitivity internal GPS receiver and high quality embedded charts. The optically bonded LCD display dramatically improves contrast, eliminates condensation and improves readability.

KEY FEATURES

- Internal high sensitivity GPS sensor eliminates need for an external antenna for most installations
- Embedded chart options: Europe, Coastal US, Latin America-Asia-Oceania
- Also compatible with Navionics Gold and Platinum
- Low profile flush mounting
- Rugged IPX6 waterproof housing
- Dual display networking via SeaTalkhs
- Sunlight viewable, super high resolution displays :
C90W: WXGA resolution (800x480)
C120W: WXGA resolution (1280x800)
C140W: WXGA resolution (1280x800)
- Intuitive softkeys for essential navigation functions
- New Unicontrol™ integrates 'OK', Cursor & Rotary controls into one
- Highly customisable user interface with multiple page and split window combinations
- Processors are 2.5 times faster
- Faster pans & screen refresh
- On board graphics accelerator
- Smoother 3D graphics and video
- Composite Video In
- Optional on board cameras
- Smartpilot X Series autopilot control
- Compatible with Digital Radar, Digital Sounder Module, AIS and SIRIUS Weather Module

SUPPLIED WITH

Power & interface lead, mounting bracket.

RAYMARINE A SERIES

5, 5.7 & 6.4in Colour Chartplotter & Chartplotter/Fishfinder Displays



The feature-packed, all new A-Series are available as standalone chartplotters or combination chart/fishfinders with a powerful inbuilt 500W 50/200kHz HD Digital sounder. All are available with preloaded with Navionics charts and can be further expanded with optional Navionics Hotmaps, Gold or Platinum cartography on compact flash. Each A Series features a high sensitivity internal WAAS GPS receiver providing pinpoint chartplotter accuracy, or add a RayStar 125 GPS antenna for situations where an external GPS antenna is needed.

KEY FEATURES

- A50 - 5in Chartplotter
- A50D - 5in Chartplotter/Fishfinder
- A57D - 5.7in Chartplotter/Fishfinder
- A70 - 6.4in Chartplotter
- A70D - 6.4in Chartplotter/Fishfinder
- Rugged IPX6 waterproof housing
- Sunlight viewable, high resolution VGA displays
- Intuitive softkeys for essential navigation functions
- Create customisable pages for engine data, trim tabs, instrument data etc via NMEA2000/SeaTalkng
- Two NMEA0183 In/Outputs
- High speed chart redraw
- Compatible with SIRIUS Weather Module
- AIS target tracking (with optional AIS250 module)
- Smartpilot X Series autopilot control

ORDER CODES - CALL FOR DETAILS

RAYMARINE HD & SHD DIGITAL

Radar Scanners

Raymarine's exclusive Super HD Digital technology gives amazingly clear radar images with unmatched target separation and lifelike presentation that virtually eliminates noise, clutter and false echoes. Super HD Digital processing delivers a radar image that can't be matched by similar analogue or digital radar systems, and brings you a level of performance that rivals that of systems of more than twice the size and power output.



RADOME KEY FEATURES

- Narrow horizontal beam angle - 4.9° for 18in and 3.9° for 24in
- Custom designed LNC (Low Noise Converter)
- Lowest noise on the front end of the system, superior sensitivity and weak target acquisition
- Greatest number of pulse lengths, pulse repetition frequencies and IF bandwidths
- Optimises range discrimination and target detection performance over the entire range scale
- Quieter belt drive operation
- Superior auto functions
- Thin interconnect cable (12.3mm)



OPEN ARRAY KEY FEATURES

- Twice the performance of analogue radar systems
- Reduces the effective horizontal beam width giving the target resolution of a much larger radar array
- Adaptive digital receiver automatically adjusts to changing environmental and sea conditions for a dramatically clearer picture
- Fast digital receiver processor
- 256 color target levels
- Dual range capable
- Thin interconnect cable (12.3mm)
- 12 or 24 volt operation

Tech info

Raymarine Radar Scanners

When ordering your C or E Series radar you'll need to specify the antenna you require -

Part No.	Size	Power	Type	Range
RD418D	18in	4kW	RD	48nm
RD424D	24in	4kW	RD	36nm
RA1048HD	48in	4kW	OA	72nm
RA1048SHD	48in	4kW	OA	72nm
RA1072HD	72in	4kW	OA	72nm
RA1072SHD	72in	4kW	OA	72nm

RD - Radome Antenna (enclosed)

OA - Open Array

Call us to discuss your requirements if you are in any doubt.

Turn to the back page for pricing and ordering info NOW!

RAYMARINE E SERIES

8.4 & 12.1in Colour Multi-Station Combi Displays



Raymarine's E80 and E120 Series multifunction, multi station navigation displays combine chartplotter, fishfinder, radar, instrument data and on-board video displays into a single, rugged, easy to use unit that is compatible with the very latest Navionics Platinum cartography. The amazing 8.4in (E80) and 12.1in (E120), 256 colour ultrabright displays are sunlight viewable and waterproof, so are equally at home mounted above or below decks. The multi station facility means you can fit one at the chart table and another at the flybridge, in the cockpit or wherever you need to keep in touch with what's going on - and the superfast 100 megabit SeaTalk_{hs} networking means data and images are transmitted virtually instantaneously.

KEY FEATURES

- Single, dual or multi-station configurations
- **NEW!** Display Navtex info from external engine
- Radar chart overlay option
- **NEW!** AIS chart overlay from external AIS engine
- Plug & play - connect up to 8 SeaTalk_{hs} devices
- Display remote video sources from CCTV cameras, entertainment systems and more
- Export navigation video to remote monitors or displays
- Display NMEA2000 compatible engine system data

- Network with SeaTalk, SeaTalk2, SeaTalk_{hs}, NMEA0183 or NMEA2000 instruments
- Patented digital sonar technology for precise targeting of fish and bottom structure
- Optional Raymarine Keyboard - see and control your E Series anywhere on board!
- Bracket or flush mount

SUPPLIED WITH

Power & interface lead, mounting bracket.

ORDER CODE E80 - ZRAYE02011

ORDER CODE E120 - ZRAYE02013

RAYMARINE AIS250

Black Box AIS Receiver

The Raymarine AIS250 easily integrates with existing VHF antennas using an inbuilt VHF splitter. The AIS250 then interfaces to Raymarine A, C, E or G Series systems, allowing AIS targets to be graphically overlaid in both chartplotter and radar modes.



KEY FEATURES

- Receives Class A and B AIS broadcasts
- Displays target name, course, speed and status
- Reconcile AIS and radar targets for added safety
- Inbuilt antenna splitter
- Two NMEA 0183 inputs, two NMEA 0183 outputs
- Inbuilt NMEA multiplexer

ORDER CODE - ZRAYE03015

RAYMARINE SR100

Sirius Weather Receiver (US Only)

Graphically display up to the minute animated weather forecasts on your A, C, E or G Series system. The SR100 delivers state-of-the-art forecast information. A monthly Sirius Marine Weather subscription is required.



KEY FEATURES

- WSI NowRad® Weather Radar
- Lightning and Storm Tracks
- Sea Surface Temperature
- Warnings, observations and buoy reports
- Surface Pressure, Wind and Wave forecast and more

ORDER CODE - ZRAYE03008

RAYMARINE DSM30 & DSM300

HD Digital Sounder Module

Add HD Digital sounder technology to the C and E Series combi displays with the DSM30 (600W) and DSM300 (1000W) digital sounder modules. Choose from a wide range of transducers (see below).



KEY FEATURES

- DSM30 - 600 Watt, 12v
- DSM300 - 1000 Watt, 12 or 24v
- 50/200kHz dual frequency
- Submersible to IPX7 standard
- hsb2 networking compatible with "Plus" series radars, chartplotters and fishfinders
- HD Digital technology virtually eliminates clutter
- Auto Adaptive Gain control - no adjustment required
- Digitally Adaptive Transmitter Receiver with infinite receiver bandwidth settings and digital filter
- A-Scope (Real-Time Display): Split second real time representation of fish and bottom features
- Auto or manual zoom (x2, x4 or x6)
- Bottom lock and white line

SUPPLIED WITH

Transducers must be specified. If fitting to an E Series a SeaTalk_{hs} crossover coupler or SeaTalk_{hs} Network Switch is required

ORDER CODE DSM30 - ZRAYE63074

ORDER CODE DSM300 - ZRAYE63069



Tech info

Raymarine Echosounder Transducers

Suitable for the Digital Sounder Modules and most Raymarine stand-alone fishfinders (except A Series).

P319	Plastic thru hull 600W, 50/200kHz Depth only	
B744V	Bronze thru hull 600W, 50/200kHz Depth, speed, temp Also available with long stem B744VL (shown)	
P66	High speed transom mount 600W, 50/200kHz Depth, speed, temp	
P79	Adjustable in-hull 600W, 50/200kHz Depth only	
SS555	Stainless steel thru hull 600W, 50/200kHz Depth only	
B256	Bronze thru hull high perf 1000W, 50/200kHz Depth, temp	
B260	Bronze thru hull v high perf 1000W, 50/200kHz Depth, temp	

We accept most major credit and debit cards

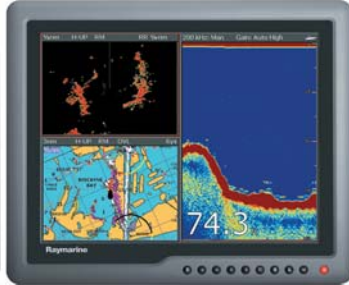


G Series Navigation System

RAYMARINE G120/G150/G170/G190

Marine Monitors

These superb marine monitors not only integrate perfectly with the rest of the G Series Navigation System, but can also be used with a wide range of other devices - onboard PCs, CCTV cameras, satellite TV, DVD, game consoles - in fact anything with a VGA or DVI output. With 9 video inputs, all onboard navigation, security and entertainment systems can be centralised via one set of displays.



KEY FEATURES

- 12, 15, 17 and 19 inch displays
- High resolution: 1024 x 768 pixels (XGA)
- Ultra bright sunlight viewable display technology with anti-reflective filter
- 9 video inputs (3 Analogue VGA, 2 DVI, 3 Composite Video, 1 S-Video)
- Wide viewing angle and sharp contrast, adjustable backlighting with night mode
- On Screen Display (OSD) menu for more advanced management
- Direct access keys provide quick access to each video input source as well as PIP (Picture in Picture), brightness and night mode controls

- Picture In Picture - resize/reposition second window anywhere on the display
- Impact resistant glass fascia bonded to LCD prevents condensation
- Low profile, thin bezel for unobtrusive, professional looking installation

SUPPLIED WITH

Sun cover, VGA cable, power cable, mounting hardware

ORDER CODE G120 - ZRAYE02034

ORDER CODE G170 - ZRAYE02036

ORDER CODE G150 - ZRAYE02035

ORDER CODE G190 - ZRAYE02037

RAYMARINE GPM400 (Europe)

G Series Processor Module

The core of the G Series system, with a super fast processor, high performance graphics hardware and an inbuilt shock resistant, high capacity hard drive. The rugged aluminum housing is designed for cool, quiet, trouble-free operation under any conditions.



KEY FEATURES

- Pre-loaded with Navionics Platinum charts for the whole of Europe (no unlock codes required)
- Up to 10 times faster than other embedded marine navigation systems
- Compact Flash card reader for card-based charts
- Two high performance DVI/VGA video output ports
- 3000 waypoints/45,000 trackpoints
- Can be used with DSM300/400 sounder module
- Connections for SeaTalkNG, SeaTalkhs, SeaTalk, NMEA2000, NMEA 0183
- Multiple GPM400 module support via SeaTalkhs

ORDER CODE - ZRAYE02047

RAYMARINE GVM400

G Series Audio-Video Module

Video server for interfacing up to 4 external video devices to the G Series System. SeaTalkhs networking eliminates the need to route multiple video signal cables throughout the system.



KEY FEATURES

- Integrated video observation system
- 4 composite inputs or 3 composite + 1 S-Video with stereo audio
- View up four video streams simultaneously
- Two GVM400 video modules can be added for up to eight video streams on the network
- Compatible with Raymarine CAM50 and CAM100 marine cameras

ORDER CODE - ZRAYE02043

RAYMARINE COMMAND CTR

G Series Command Centre Keyboard



The control point for the G-Series Navigation System, the Command Centre Keyboard offers simple, intuitive control of all system features and functions. Can be dash installed or wireless mounted.

A single keyboard can be used to control anything from a single GPM400/G-Series Monitor combination on a smaller vessel right up to multiple monitors and processors on a superyacht.

KEY FEATURES

- Control multiple GPM400 processor modules and display combinations
- LCD identifies each nav station and display in use
- Full remote control of each G-Series display
- Optional wireless kit
- Intuitive softkey interface and alphanumeric keypad
- Inbuilt autopilot control
- Optional wireless upgrade kit and base station

ORDER CODE - ZRAYE02044

RAYMARINE CAM100 (PAL)

Day and Night Vision Video Camera

Transforms the G & E Series into a powerful onboard video observation systems. Improve docking safety by monitoring blind spots or keep track of the engine room and crew. Use multiple cameras for a total view of your vessel's surroundings. Reverse image version also available.



KEY FEATURES

- Plug & Play with G and E Series
- Automatic switching between true colour (day) and black & white (night) use
- Up to 15m total darkness visibility in night mode.

ORDER CODE - ZRAYE03006

RAYMARINE HD DIGITAL RADAR

Open Array Radar Antennas



HD Digital technology brings the power of digital signal processing with a truly adaptive transmitter and receiver that automatically adjusts to changing environmental and sea conditions. HD Digital radar gives a dramatically clearer radar picture with crisp, well-defined echoes and life-like target presentation. Super HD Digital processing delivers a radar image unmatched by similar analogue or digital systems, giving a level of performance that rivals systems of more than twice the physical size and power output.

MODELS AVAILABLE (OPEN ARRAY)

RA1048D - 4kW 48in HD Digital, 72nm

ORDER CODE - ZRAYT52071

RA1072D - 4kW 72in HD Digital, 72nm

ORDER CODE - ZRAYT52074

RA1048SHD - 4kW 48in Super HD Digital, 72nm

ORDER CODE - ZRAYT52085

RA1072SHD - 4kW 72in Super HD Digital, 72nm

ORDER CODE - ZRAYT52087

RA3048SHD - 12kW 48in Super HD Digital, 72nm

ORDER CODE - ZRAYT52086

RA3072SHD - 12kW 72in Super HD Digital, 72nm

ORDER CODE - ZRAYT52088

RAYMARINE CAM50 (PAL)

Dome Camera

Ideal for interior installations, the unobtrusive dome design is ideal for mounting in the saloon, wheel house or engine room. Can be ceiling or wall mounted.



KEY FEATURES

- Plug and play with Raymarine G & E Series
- Manually adjustable pan and tilt
- High quality imager, excellent colour reproduction
- Reverse image version also available

ORDER CODE - ZRAYE03017

Turn to the back page for pricing and ordering info NOW!

RAYMARINE END OF LINE OFFERS

Big Savings On Discontinued Products

Due to our purchasing power, we are able to offer superb savings on end of line products - sometimes less than half the original retail price! Check our website for current deals and prices, and remember that these offers are always subject to availability - when they're gone, they're gone!!!

RAYMARINE C SERIES

6.5, 8.4 and 12.1in Colour Combi Displays

Superb single station multifunction navigation displays with a choice of screen sizes from 6.5 to 12.1in high resolution 256 colour daylight viewable. The C-Series brings all aspects of navigation into one location, acting as a central hub and giving total navigation control from a single station - chart, instrument, autopilot, GPS, and fishfinder. Screen configuration is simple and the split screen function displays information sources simultaneously.



MEGA DEAL OFFER!

See website for details

On their own, the C Series are powerful chartplotters. The SeaTalk and NMEA ports enable it to be easily connected to autopilots, instruments, DSC VHF radios and more. To unlock their real power, simply add plug in a radar antenna and/or the DSM300 digital sounder module and the C Series becomes a multi-function combination display - chart, radar and echosounder.

These fantastic combi displays are available as standalone units or radar bundles. Check out website for the latest prices and availability.

RAYMARINE RC400

Portable 3.5in Colour Chartplotter

This great little handheld chartplotter has been very popular and still remains highly sought after - and we have the only remaining stock! Both fixed mount and portable, the RC400 comes standard with a mounting bracket and cables for 12 volt power and NMEA0183 interfacing. The battery compartment holds 4 AA rechargeable Nickel metal hydride (NiMH) batteries and also accepts standard alkaline batteries.

KEY FEATURES

- 3.5in Daylight viewable transfective colour LCD
- Waterproof to IPX7
- Built in world map
- Navionics Gold cartography
- North Up, Course Up and Head Up
- 16 range scales 1/8 to 4096nm
- PC Waypoint transfer (via NMEA WPL sentence)
- Arrival / XTE / anchor / fix alarms
- Tidal information supported (height and current)
- Sunrise/Sunset prediction
- Man OverBoard (MOB)
- Unlimited waypoint, route and track storage using compact flash cards
- Raymarine SmartRoute automatically builds routes from previous tracks
- Autozoom Mode intelligently maintains your vessel and your waypoint on the best chart scale while underway
- Screen Amplifier automatically offsets your vessel position for maximum "look ahead" on the chart display

MEGA DEAL OFFER!

See website for details



EXTREMELY LIMITED STOCKS - BUY NOW OR MISS OUT!!!

RAYMARINE ST1000+/ST2000+

Cockpit Tiller Autopilot

Raymarine's range of tiller autopilots are suitable for most tiller-steered sailboats. Easy to use and install they feature a useful backlit display.



KEY FEATURES

- ST1000+ suitable for sailboats up to 2,500kg
- ST2000+ suitable for sailboats up to 4,500kg
- Inbuilt SeaTalk and NMEA interface
- Autopilot and navigation info display
- Weatherproof design, 2-stage pushrod seal
- Low power consumption
- Intelligent course holding software

ALSO CONSIDER

- Eagle ETP10, ETP22, ETP33

ORDER CODE ST1000+ - ZRAYA12004

ORDER CODE ST2000+ - ZRAYA12005

Optional Extras

Add second station control to your ST1000, ST2000 and SPX5 Cockpit Pilots by adding the wireless S100 controller.



RAYMARINE SPX5/SPX5GP TILLER PILOT

High Performance Cockpit Tiller Autopilot

The ultimate tiller autopilots, with a fixed control head and compass unit and two very powerful drive unit options but still with low power consumption.



NEW FOR 2009

KEY FEATURES

- For sailboats up to 6,000kg (SPX5) and 7,500kg (SPX5-GP)
- Inbuilt SeaTalk and NMEA interface
- Weatherproof design with two stage pushrod seal
- Intelligent course holding software

ORDER CODE SPX5 - ZRAYE12203

ORDER CODE SPX5 GP - ZRAYE12204

RAYMARINE SPX5 WHEEL PILOT

Cockpit Wheel Autopilot

Fully enclosed wheel mounted autopilot - no belts or untidy trailing wires. Features wheel mounted drive and a fixed control unit with large backlit display. The convenience of an inboard pilot at the cost of a cockpit pilot.

KEY FEATURES

- Low power consumption
- Backlit display and keypad
- SeaTalk and NMEA interface
- Navigational information repeater
- Intelligent course holding software
- Suitable for sailboats up to 7,500kg
- Can be used on hydraulically steered boats (with optional rudder feedback)

SUPPLIED WITH

Control unit, drive/gearbox unit, fluxgate compass and cabling

ORDER CODE - ZRAYE12201



NEW FOR 2009

Optional Extras

Add second station control to your ST1000, ST2000 and SPX Cockpit Pilots by adding the wireless SmartController.



We accept most major credit and debit cards



RAYMARINE SMARTPILOT X SERIES

Inboard Autopilot System

Raymarine's new SmartPilot X range of inboard autopilots offer more power and greater steering accuracy with advanced steering software and powerful new features. The new ST70 autopilot control enables you to take full advantage of the SmartPilot X Series capabilities and performance. Each system must include at least one ST70 autopilot control, but additional ST6002, ST7002 or ST8002 control heads can also be added for multi-station control. The pilot can also be engaged directly from a Raymarine combi display.

SMARTPILOT X KEY FEATURES

- Complete all in one autopilot options
- Linear, hydraulic and sterndrive options
- Inbuilt rate gyro sensor
- AST (Advanced Steering Technology) and SmartSteer gives superior steering in all conditions and speeds
- Smart Rudder Sense eliminates rudder feedback unit
- SeaTalkng compatibility with ST70 instruments
- Control the pilot from your Raymarine combi display
- New automatic fishing patterns

ST70 AUTOPILOT CONTROL KEY FEATURES

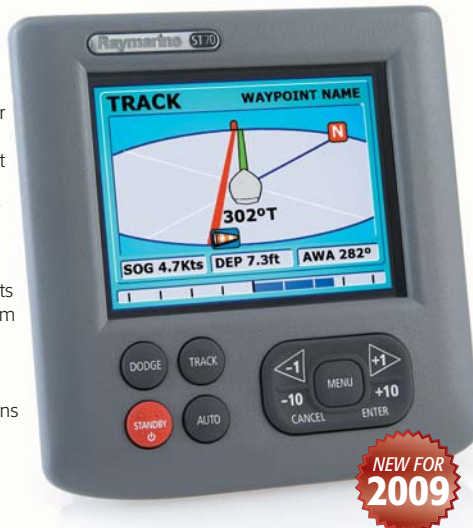
- Primary control head for SmartPilot X Series autopilots
- Unlock the full functionality of the SmartPilot X system
- 3.5in sunlight viewable colour display
- SeaTalkng and NMEA2000 interface
- Digital, compass or 3D isometric displays
- Extra heads can be added for multi-station installations
- Simple intuitive setup and calibration
- Surface or flush mount
- Intuitive dodge function

SUPPLIED WITH

Control, course computer, gyro compass, drive. See box on this page for package information and call us for more details

ALSO CONSIDER

- Furuno NavPilot
- Simrad AP25 and AP26



NEW FOR 2009

ASK US ABOUT INSTALLATION

RAYMARINE ST6002

Second Station Control Head

The ST6002 is a basic optional secondary control unit that can be used alongside the main ST70 control head. It features a large clear display with an analogue rudder angle indicator.

KEY FEATURES

- Large display with analogue rudder angle indicator
- Inbuilt SeaTalk & NMEA interface
- Autopilot, navigation and instrument displays
- Multi station control options
- Remote control ST60/ST60+ instruments



RAYMARINE ST7002

Second Station Control Head

Optional secondary control head takes all the features and performance of the ST6002 and adds a multi-function control unit with large, clear LCD display.

KEY FEATURES

- All the features of the ST6002
- Large display with analogue rudder angle indicator
- Inbuilt SeaTalk & NMEA interface
- Autopilot, navigation and instrument displays
- Multi station control options
- Remote control ST60/ST60+ instruments



RAYMARINE ST8002

Second Station Rotary Control Head

Optional secondary control head with all the features of the ST7002, but with a large, easy to use rotary control knob and power steer option.

KEY FEATURES

- Large display with analogue rudder angle indicator
- Inbuilt SeaTalk & NMEA interface
- Autopilot, navigation and instrument displays
- Multi station control options
- Remote control ST60/ST60+ instruments



Tech info

Selecting your SmartPilot X Series

The Raymarine Smartpilots are designed to suit virtually any kind of boat that is afloat up to 35,000kg (77,000lb) displacement. The flexible modular system allows you to build up a package of drive, electronics core pack and control unit to suit your unique requirements -

1. Drive Selection

Raymarine offer a selection of drives to suit the size and steering type of your boat -

Linear Drives 12 & 24v (specify)			
Type	Drive	Stroke	Displacement
1*	Mech	12in	11,000kg (24,000lb)
2S	Mech	12in	15,000kg (33,000lb)
2L	Mech	16in	20,000kg (44,000lb)
2	Hyd	10in	22,000kg (48,000lb)
3	Hyd	12in	35,000kg (77,000lb)

Reversing Pumps 12 & 24v (specify)

Type	Ram Capacity (Min-Max)
0.5*	50-110cc (3.1-6.7in ³)
1	80-230cc (4.9-14in ³)
2	230-350cc (14-21in ³)
3	350-500cc (21-30.5in ³)

Rotary Drive 12 & 24v (specify)

Type	Displacement
1*	11,000kg (24,000lb)
2	20,000kg (44,000lb)

* 12v only

2. Core Pack Selection

The core pack is the electronics package for the autopilot which includes the course computer, compass and feedback unit (X-30 & X-SOL only).

There are three core packs available, and these are specified depending on the drive unit type selected in stage 1 -

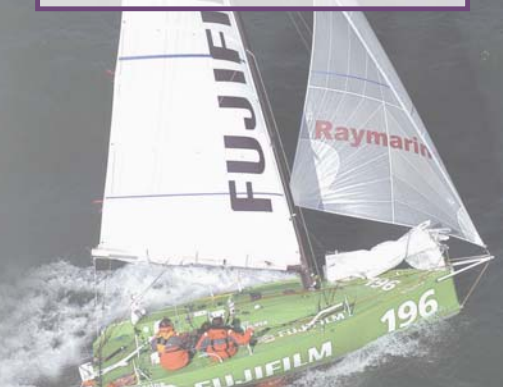
Core Packs			
Type	Voltage	Drive Current	Drives
X-10	12/24v	10amps	Type 1
X-30	12/24v	30amps	Type 2 & 3
X-SOL	12/24v	-	Solenoid

3. Additional Control Unit Selection

If required, choose additional control units -

ST70	Full function control unit
ST6002	Compact control unit
ST7002	Large screen control unit
ST8002	Large screen unit with rotary control

Please call us to discuss your requirements and to ensure you select the correct package for your boat.



Turn to the back page for pricing and ordering info NOW!

RAYMARINE RAY49

DSC VHF Radio

The new Ray49 is a compact, rugged, submersible (IPX7) VHF radio with easy-to-use rotary controls for volume, squelch and menu operation, a large 7-segment, backlight LCD display and the fistmike includes integrated channel controls and an inbuilt speaker. The receiver offers excellent noise rejection and best-in-class audio output. Features four scan modes and programmable scanning.

KEY FEATURES

- Class D DSC - distress key transmits GPS position and a digital mayday
- NMEA0183 input for chartplotter position polling
- Programmable Scanning, dual and Tri Watch
- Quick Access channel 16/9 Key
- NOAA Weather Alert (US only)
- External loudspeaker option
- Available in gray or white
- Optional flush mount kit

SUPPLIED WITH

Radio, microphone, sun cover, mounting bracket, power/speaker/data cable



NEW FOR
2009

ORDER CODE RAY49E Grey (Europe) - ZRAYE43035
ORDER CODE RAY49E White (Europe) - ZRAYE43039
ORDER CODE RAY49 Grey (US) - ZRAYE43034
ORDER CODE RAY49 White (US) - ZRAYE43038

RAYMARINE RAY240E

Modular DSC VHF Radio

Modular multi-station system with separate transceiver unit that can be mounted out of sight, with only the waterproof handset and remote loudspeaker on show. Each handset provides full VHF and DSC functionality plus intercom facility between stations.

KEY FEATURES

- Full function alphanumeric keypad
- Programmable scan and tri-watch
- Loudspeaker with on/off switch and volume control
- Optional fog horn/loudhailer

SUPPLIED WITH

One handset, loudspeaker, transceiver unit, cables

ORDER CODE - ZRAYE42002



RAYMARINE 37STV

Satellite TV Antenna System

If you want the benefits of satellite TV onboard, but you've always thought your boat was too small, then the 37STV system is the solution, which will fit on most boats 25-40ft in length.

KEY FEATURES

- All the key features in a small boat package
- Footprint of only 14.5in, weighs only 8.6kg
- Watch on TV, monitor, G Series or E Series display
- Engineered for the harshest marine environments
- Quickly acquires signals from all DVB compatible service providers

SUPPLIED WITH

Antenna, Antenna Control Unit. You will need to purchase and activate a DVB compatible satellite TV receiver with the provider of your choice and provide a television monitor or other suitable video display

ORDER CODES - CALL FOR DETAILS



RAYMARINE 45STV & 60STV

Satellite TV Antenna System

Satellite antenna systems for DVB compatible digital satellite television receivers, featuring a compact dome with a fully automatic, marine stabilised antenna providing uninterrupted satellite television reception in almost any conditions. It quickly identifies compatible DVB satellites using a unique Wide Range Search algorithm. Highly accurate satellite tracking at sea is achieved using Dynamic Beam Tilting technology, ensuring a clear picture in the most challenging conditions.

KEY FEATURES

- 45STV suitable for vessels of all sizes, footprint of only 19.2in, weight is only 14kg
- 60cm 60STV for vessels of 50ft and above offers greater signal range and improved reception
- Watch satellite TV on a television, monitor, G Series marine monitor or E Series display
- Engineered for the harshest marine environments
- Simplified cabling for easy installation
- Display E-Series feature video input for interfacing with satellite television receivers
- Dual LNB Design - watch the weather at the helm while others watch TV down below
- Supports multiple receivers
- Wide Range Search algorithm allows for fast identification and acquisition of satellites

SUPPLIED WITH

Antenna, Antenna Control Unit. You will need to purchase and activate a DVB compatible satellite TV receiver with the provider of your choice and provide a television monitor or other suitable video display

ORDER CODES - CALL FOR DETAILS



RAYMARINE RAY55E

DSC VHF Radio

The Ray55E features rotary controls for volume, squelch and menu operation and an extra large LCD display. The fistmike includes integrated channel controls and an inbuilt speaker. The Ray55E is also expandable to 2 stations with full duplex intercom capability using the optional Raymic Full Function Handset.

KEY FEATURES

- Position, COG & SOG display via NMEA input
- Chartplotter position polling
- Favourite channel softkeys
- Dual Channel Display shows active and stand by channel simultaneously
- All Scan, Saved (Memory) Scan, Priority All Scan and Priority Saved Scan
- Submersible (IPX7) rugged housing
- Low profile bezel, optional flush mount kit

ALSO AVAILABLE

- Ray218 - Adds an inbuilt 30 Watt Hailer with "Listen Back" capability and automatic foghorn to the features of the Ray55E

SUPPLIED WITH

Radio, microphone, sun cover, mounting bracket, power/speaker/data cable

ORDER CODE RAY55E (Europe Only) - ZRAYE43037
ORDER CODE RAY218E (Europe) - ZRAYE43033
ORDER CODE RAY218 (US) - ZRAYE43032



RAYMARINE RAYMIC

Remote Station Handset

Add full function remote control of the Raymarine Ray55 and Ray218 VHF radios with the Raymic remote station handset.

KEY FEATURES

- Full control of all features and functions of the Ray55 and Ray218 VHF radios
- Extra large dot matrix LCD
- Speaker microphone
- Submersible (IPX7 Standard)
- Full duplex intercom between stations

SUPPLIED WITH

Handset, cradle

ORDER CODE - ZRAYA46051



RAYMARINE ST70

Instrument System

The ST70 Multifunction Colour display offers a brand new way of visualising instrumentation and navigation data. Designed for simple setup and extensive user customisation, ST70's capabilities include depth, speed, wind, navigation data, autopilot status, engine monitoring and more.

ST70 systems use Raymarine's new SeaTalkng Next Generation data bus which enables simple interconnection of multiple ST70 instruments, transducers and NMEA2000 compatible devices as well as existing Raymarine SeaTalk and SeaTalk2 systems.

To build a complete ST70 instrument system choose from the complete line of ST70 transducer pods and SeaTalkng networking components (sold separately.)

KEY FEATURES

- Fully customisable displays for depth, speed, wind, navigation data, engine data and more
- Full colour graphical displays, virtual analogue displays and histograms
- 8 user defined instrument data pages
- 16 screen layout options for each data page
- Eleven languages available
- High contrast sunlight viewable TFT colour display with wide viewing angles.
- Day and Night mode colour palettes.
- Fully waterproof to CFR-46 standard
- Easily retrofitted to ST60 surface mount installations
- Compatible with SeaTalk, SeaTalk2, SeaTalkng and NMEA 2000 devices.
- Intelligently converts first-generation SeaTalk data to SeaTalkng



SUPPLIED WITH

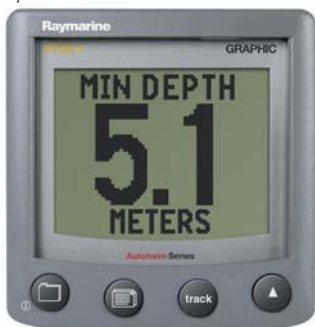
- Snap-on sun cover, surface and flush mounting kits, SeaTalkng backbone cable, SeaTalk adapter cable

ORDER CODE - ZRAYE22105

RAYMARINE ST60+ GRAPHIC

Multifunction Dot-Matrix Display

Versatile multifunction dot matrix display that can show any data on the SeaTalk network bus.



KEY FEATURES

- Intuitive Chapter and Page control keys
- Up to seven user configurable favourites pages
- View and control multiple data sources
- Large digit, graphical or multi-line format displays
- Single, split or quad screen displays

ORDER CODE - ZRAYE22075-P

RAYMARINE ST60+ COMPASS

Compass System

KEY FEATURES

- Heading
- Average course
- Course Over Ground*
- Man overboard display
- Keypad heading alignment



ORDER CODE - ZRAYE22014-P

RAYMARINE ST60+ SPEED

Speed/Log System

KEY FEATURES

- Boat speed 0-60kts
- Log & Resettable Trip
- Sea temperature
- Pilot Status display*
- Max & avg speed, VMG*
- Speed over ground*
- Stopwatch/lap timer
- Race start timer



ORDER CODE - ZRAYE22009-P

RAYMARINE ST60+ DEPTH

Depth System

KEY FEATURES

- Water depth 0.8-180m
- Depth trend indicator
- Transducer, waterline or keel offset
- Pilot status display*
- Shallow, deep & anchor alarms



ORDER CODE - ZRAYE22010-P

RAYMARINE ST60+ WIND

Wind System

KEY FEATURES

- Apparent wind speed
- True wind speed*
- True wind direction*
- Max wind speed alarm
- Beaufort, knots, m/sec
- Master or repeater operation



ORDER CODE - ZRAYE22012-P

RAYMARINE ST60+ TRIDATA

Combi System

KEY FEATURES

- Combined Speed and Depth multi-line display
- Boat speed 0-60kts
- Water depth 0.8-180m
- Speed over ground
- Automatic switching of depth sensors when depth sounder module is detected, to avoid interference



ORDER CODE - ZRAYE22013-P

*Requires relevant data to be present on SeaTalk

RAYMARINE ST40

Entry Level Instrument System

Elegant and simple to operate, with large digits and razor sharp LCD displays. Optional snap-on bezels, three levels of back lighting including buttons and waterproof to USCG-CFR 46. SeaTalk compatible, all necessary transducers are supplied with the units.



SPEED ORDER CODE - ZRAYE22043
DEPTH ORDER CODE - ZRAYE22044
WIND ORDER CODE - ZRAYE22047
COMPASS ORDER CODE - ZRAYE22048
BIDATA ORDER CODE - ZRAYE22045

Turn to the back page for pricing and ordering info NOW!

RAYMARINE RAYTECH RNS 6.1

PC Navigation Software Suite

Raytech RNS V6.1 is a powerful PC based electronic charting system supporting raster, vector and aerial photo cartography. Plan waypoints and routes, transferring them between your PC and Raymarine plotters and combi displays. With a customisable user interface, SeaTalk^{h/s} network support, an inbuilt worldwide tides and currents database and the option to download weather forecasts from raymarine.com just some of the features of this system you can unlock the real potential of your onboard PC.

NEW IN V6.1 FEATURES

- Seamless integration with Raymarine E-Series and G-Series displays via SeaTalk^{h/s} and Ethernet - access charts, transfer waypoints and routes
- 3D Chartplotting using Navionics Platinum and Platinum+ Multidimensional charts
- Navionics Silver, Gold, Gold + and HotMaps Premium chart compatibility
- Support for Navionics USB Multicard Reader for access to Navionics charts on CompactFlash
- AIS Target tracking via NMEA0183 or SeaTalk^{h/s}
- Support for DSM400 HD Digital Sounder Module
- HD and Super HD Digital Radar Compatibility
- Record, pause and play-back HD Digital fishfinder display from your networked sounder module

KEY FEATURES

- Customisable user interface - organise navigation data into easy to use pages
- Download and animate weather forecasts from the Raymarine website
- Navigation and tactical tools - monitor wind, lay lines, other vessels and weather to enable you to make better decisions on the race course
- DataTrak time-based graphs - monitor wind trends and compare instrument data and the boat's performance
- Polar data collection and analysis - calculate your optimum speed and heading under varying conditions
- Route optimisation - identify the ideal route based on ocean current, wind speed and direction and your boat's polar characteristics

MINIMUM SYSTEM REQUIREMENTS

- Pentium 4 processor (or equivalent)
- 512Mb RAM
- Windows 2000/XP
- CD-ROM drive (if installing software from CD-ROM)
- Monitor capable of displaying 1024 x 768 resolution, 16 bit colour

OPTIMUM SYSTEM REQUIREMENTS

- Intel Core 2 Duo processor (or equivalent)
- 2Gb RAM or higher.
- NVIDIA GeForce FX graphics card or greater
- Windows XP

ALSO REQUIRED (DEPENDING ON SYSTEM)

- Serial port - if connecting to NMEA or SeaTalk.
- Ethernet port - if using SeaTalk^{h/s}
- PCMCIA port - if connecting to a Pathfinder hsb2 system using a PCMCIA to hsb2 adaptor
- USB2 port - if connecting to a Pathfinder system using a USB2/PCMCIA adaptor

COMPATIBLE CHARTS

- Navionics Gold, Platinum and Hot Maps
- C-Map NT+ C-Cards (requires USB C-Card reader)
- C-Map NT+ PC charts
- MapTech raster charts
- Softchart raster charts
- NDI Canadian charts

SUPPLIED WITH

RayTech RNS v6.1 Software on CD-ROM, Software License Key, Handbook and Installation Guide, Navionics Multicard Chart Reader, Complete USA Raster Charts on DVD-ROM, SoftChart Coastal Planning Charts on CD-ROM, C-MAP NT+ Worldwide Planning Charts (Charts install automatically with RayTech RNS v6.1)

ORDER CODE - ZRAYE112111



Radar/Chart Overlay



AIS Targets



3D Chart Display

RAYMARINE RAYTECH PLANNER

PC Navigation Planner Software



Limited version of RayTechRNS 6.1 software designed for planning and transferring waypoints and routes, between your PC and Raymarine chartplotters and multifunction displays

KEY FEATURES

- PC navigation software for the "at home" navigator
- Create and plan routes with a simple point and click interface
- Features built in planning charts for the entire world
- Compatible with a wide range of chart formats including, Navionics Gold, Platinum, C-MAP NT+, and raster charts
- Based on the powerful RayTechRNS 6.1 software

ORDER CODE - ZRAYE112113

NAVIONICS CARD READER

Multichart Card Reader

Use in conjunction with your RayTech RNS 6.1 or RayTech Planner Software to read your Gold, Gold+, Platinum or Hot Maps Premium charts on your PC. Transfer waypoint and route data between your PC and compatible navigation systems like the A65, C Series, E Series and G Series.



ORDER CODE - ZRAYE86026

RAYMARINE KEYBOARD

USB Navigation Keyboard



The USB Navigation Keyboard takes advantage of the powerful RayTech RNS interface through dedicated navigation buttons and intuitive softkeys. A built in cursor and rotary knob are standard, along with a convenient alphanumeric keypad. Designed to be both "built-in" and handheld, the USB Navigation Keyboard's mounting cradle mounts flush in the dash and allows the keyboard to be removed for convenient hand held operation.

KEY FEATURES

- Full control of Raytech software
- Dedicated control keys, alphanumeric keypad, rotary control, cursor pad and softkeys
- Can be used as a fixed or handheld unit

ORDER CODE - ZRAYE05001

We accept most major credit and debit cards



GARMIN FORETREX 101/201

Wearable GPS

Hands-free GPS navigation for outdoor and marine users - at just 77 grams, they're lighter than most watches. The Foretrex 101 uses two AAA batteries and the Foretrex 201 features a rechargeable internal Lithium Ion battery, both offering 15hrs typical use.



KEY FEATURES

- Trip computer
- Accuracy <15m normal GPS mode, <3m WAAS
- Racing timers - configurable start sequence, alert tones and large-number digital readout
- 500 waypoints with graphic marks, 20 routes

SUPPLIED WITH

Wrist strap, Expandable strap, A/C desktop charger with pc interface cable (Foretrex 201 only)

ORDER CODE 101 - ZGAR010-00364-00

ORDER CODE 201 - ZGAR010-00361-00

GARMIN GPSMap76Cx & 76CSx

Colour Handheld GPS

Handheld chartplotter featuring a 256 colour display, 115Mb of memory, an Atlantic Autoroute basemap and a Marine Point database. Fast USB connectivity makes loading charts and maps quick and easy.



KEY FEATURES

- Up to 30 hours battery life using 2 x AA batteries
- 1000 user waypoints, 50 routes
- 10,000 point automatic track log, 20 saved tracks
- Compatible with most MapSource products inc. BlueChart, City Select etc
- Barometric altimeter and electronic compass (GPSMap76CSx only)

SUPPLIED WITH

PC Cable, Wrist strap

ORDER CODE MAP76Cx - ZGAR010-00468-01

ORDER CODE MAP76CSx - ZGAR010-00469-01

GARMIN GPSMap60Cx & 60CSx

Handheld GPS Chartplotter

Rugged colour chartplotter with inbuilt international basemap and auto-routing capabilities. Compatible with BlueChart and City Select MapSource* products.

* Not recommended for use with Metroguide

KEY FEATURES

- 500 waypoints, 20 routes, 10,000 point tracklog, 20 saved tracks
- Serial and USB interfaces
- Anchor, arrival, off-course, waypoint and clock alarms
- 56Mb internal memory
- Battery life: 30 hrs (typical use)
- Trip computer and stop watch
- Built-in celestial tables
- Barometric altimeter and electronic compass (GPSMap60CSx only)

SUPPLIED WITH

PC/USB cable, Lanyard, belt clip

ORDER CODE MAP60Cx - ZGAR010-00421-01

ORDER CODE MAP60CSx - ZGAR010-00422-01



GARMIN eTREX H

Handheld GPS

The eTrex H includes a high sensitivity receiver for ultra-accurate positioning, with all the features of the standard eTrex handheld in a 100x50mm package that weighs only 170g.



KEY FEATURES

- Waterproof
- 18 hrs battery use
- WAAS enabled
- Up to 500 waypoints with graphic icons
- TracBack™
- Animated graphics
- Wide range of models to suit all applications

ALSO AVAILABLE

- eTrex - basic model
- eTrex Summit - includes an altimeter and electronic compass
- eTrex Legend - World city database, 1Mb internal memory, MapSource compatible

ORDER CODE - ZGAR010-00631-00

GARMIN GPS72

Handheld GPS

One of the best entry-level handheld GPS on the market, this rugged waterproof unit is WAAS-enabled, has a large, 4-level grayscale screen and it floats!

KEY FEATURES

- 500 waypoints, 50 routes
- Large digit option
- Alarms for anchor drag, arrival, off-course, proximity waypoint and clock
- Trip computer with odometer, stopped time, moving average, overall average, total time, max speed and more
- Automatic track log - 10 saved tracks let you retrace your path in both directions
- Course and speed filtering
- Built-in celestial tables
- Available as marine bundle pack with marine mounting bracket, 12v cigarette lighter cable and carrying case



ORDER CODE - ZGAR010-00309-00

ORDER CODE BUNDLE - ZGAR010-00309-05

GARMIN OREGON

Handheld Touchscreen Chartplotter

The rugged Oregon range features a 3in sunlight-readable colour touchscreen display with an easy-to-use interface. Both durable and waterproof, Oregon is built to withstand the elements and is ideal for marine and land use.

KEY FEATURES

- Slim and lightweight, waterproof to IPX7
- High sensitivity WAAS GPS
- 16hrs battery life (2 x AA)
- USB compatible
- Internal basemap
- 1000 waypoints, 50 routes, 10,000 track points, 20 saved tracks
- MapSource and BlueChart g2 Vision compatible
- Turn by turn routing on roads
- Supports geocaching GPX files
- Inbuilt hunting/fishing calendar, sun and moon information and tide tables
- Oregon200 - 24Mb internal memory
- Oregon300 - as Oregon 200, plus 850Mb memory, NMEA0183 compatible, electronic compass and altimeter, wireless data transfer
- Oregon400 - as Oregon 300, plus preloaded with topographic maps



ORDER CODE OREGON 200 - ZGAR010-00697-00

ORDER CODE OREGON 300 - ZGAR010-00697-01

ORDER CODE OREGON 400 - ZGAR010-00697-06



GARMIN NUVI 500/550

Colour Touchscreen Multi-Purpose Navigator

The rugged, waterproof nüvi 500/550 combines an in-car sat-nav with a handheld GPS/Chartplotter. The intuitive touchscreen user interface offers four user modes with customised features for driving, boating, walking and cycling. Ideal for the occasional boating enthusiast who wants one navigational device for all uses, it fits in your pocket with a rechargeable lithium-ion battery that packs in eight hours of power. nüvi comes equipped with sophisticated NAVTEQ™ mapping data and waterproof card slot to load different types of mapping.

KEY FEATURES

- Built-in compass
- High-sensitivity GPS receiver and HotFix™ satellite prediction
- European street maps and topographic shaded contours
- Journey track log and integrated Whereigo™/geocaching player
- European speed camera database
- Optional traffic services for live traffic alerts
- Plug in optional topographic mapping
- Voice-prompted directions via Bluetooth
- Garmin Lock™ anti-theft protection system
- World travel clock with time zones, currency and measurement converter, calculator, integrated picture viewer and more
- Third-party travel guides



ORDER CODE NUVI 500 (US) - ZGAR010-00700-10

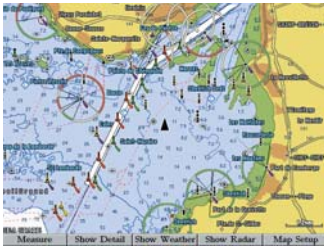
ORDER CODE NUVI 550 (EURO) - ZGAR010-00700-00



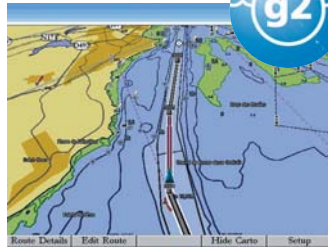
Turn to the back page for pricing and ordering info NOW!

Electronic Cartography

GARMIN BLUECHART g2 Electronic Cartography



Shaded map areas & navaids



3D chart representation



Port plan photography



Newly redesigned for 2009 g2 BlueChart charts feature smoother layering and better integration of map graphics for easy panning, scrolling and zooming. It features richer colours and shading for easier interpretation and improved visibility and improved IALA navaid symbology and marine services. And, best of all, it features a choice of "Mariner's View" map perspective, or the familiar 2D direct-overhead view - to make chart reading and orientation easier. It is styled to match the appearance of paper charts, when displayed on your Garmin chartplotter.

KEY FEATURES

- Large coverage areas
- Shaded depth contours
- Smoother layering, enhanced colour
- 2D or 3D display perspective
- Port plans and geo-indexed photos
- Improved IALA symbology
- Intertidal zones with spot soundings
- Navaids with view range and coverage
- Data on tides and currents
- Coastal roads, marinas, points of interest
- Wrecks, restricted areas, anchorages, shoals, spoilage and more

GARMIN REGULAR CHARTS UK & Ireland

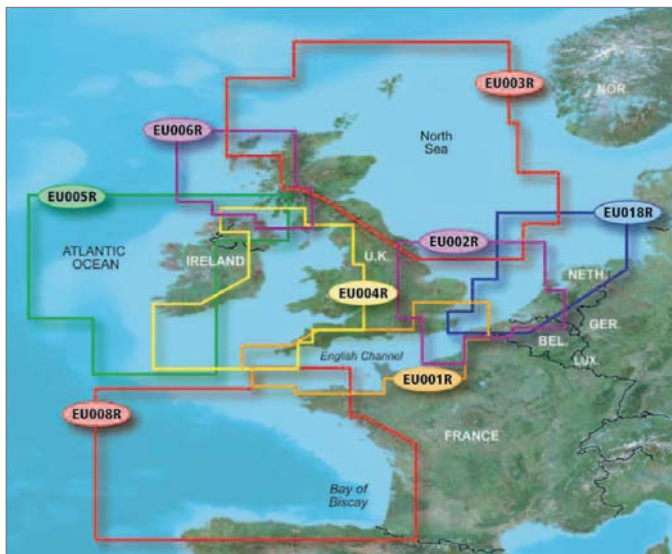


Chart format suffixes - **2**EU001R - Bluechart g2
VEU001R - Bluechart g2 Vision

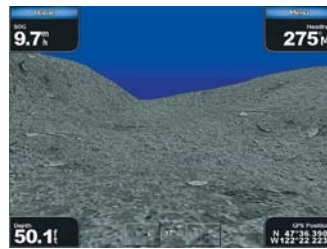
GARMIN BLUECHARTS g2 VISION Electronic Cartography



High resolution satellite images



Mariner's Eye View



Fish Eye View



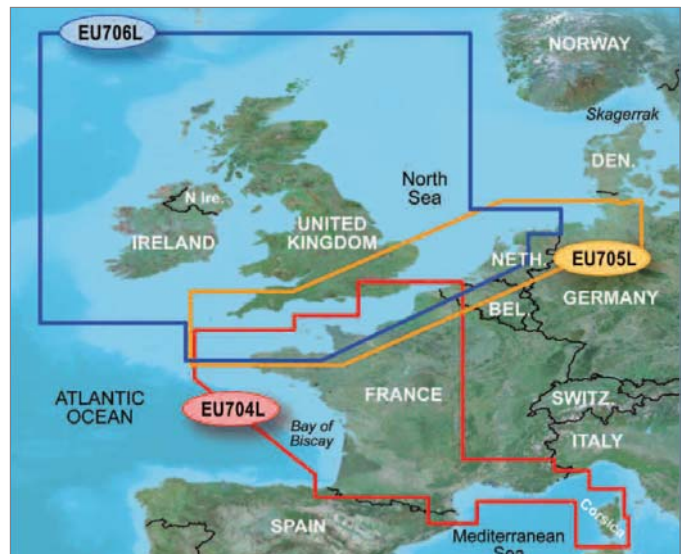
Auto Guidance

BlueChart g2 Vision offers the high detail charting of BlueChart g2 plus high-resolution satellite imagery, above and below water 3D perspective, auto guidance, aerial photography and coastal roads with points of interest. All new Garmin plotters feature basic worldwide satellite imagery for a realistic "view from space" depiction. With optional g2 Vision cards, these images are upgraded to super high-detail aerial photomapping. It's the most realistic chart display you've ever seen on a graphical chartplotter. And you can "navigate on the picture" with a clear dynamic presentation of your boat's current position.

KEY FEATURES

- Aerial reference photography provides "real world" photos of ports, harbors, marinas, waterways, navigation landmarks and other points of interest
- Mariner's Eye view - a 3D perspective of chart information
- Fish Eye view - 3D perspective below the water line for displaying bottom contours based on bathymetric charting data
- Auto Guidance technology searches chart data to suggest the best passage to a destination
- Fishing charts allow you to hide navigation data from the SD card while leaving the bottom contours and depth soundings
- Includes tides, currents, marine services, coastal roads and points of interest

GARMIN LARGE CHARTS UK & Ireland



We accept most major credit and debit cards



Chartplotters & Chartsounders

GARMIN GPSMap276 & 278

3.8in Colour Marine/Automotive Chartplotters

All-in-one, versatile, colour chartplotters and automotive navigators, perfect for land or water. Both units feature a 256-colour TFT display that's easy to read in bright sunlight along with a built-in marine and automotive basemaps. The 278 also features voice-prompts and comes ready preloaded with detailed European City Navigator® NT street maps, including Eastern Europe and contains millions of points of interest, including restaurants, hotels, petrol stations, marinas, attractions and more.

KEY FEATURES

- Built-in worldwide basemap
- BlueChart™ g2 compatible
- 3000 waypoints
- 50 routes (300 waypoints/route)
- 10,000-point automatic track log
- Optional remote antenna
- Serial and USB interfaces
- 2 NMEA ports
- Built-in tide and celestial tables
- Turn-by-turn voice prompts (GPSMap 278)
- Alarms: anchor drag, arrival, off-course, proximity waypoint, and clock

SUPPLIED WITH

Preloaded basemap, preloaded City Navigator NT maps*, USB cable, power/data cable, marine mount, automotive mount*, universal friction mount*, vehicle power cable with speaker*, AC charger, Trip & Waypoint Manager

*GPSMap 278 only

ORDER CODE GPSMAP276 - ZGAR010-00331-01

ORDER CODE GPSMAP278 - ZGAR010-00569-01



GARMIN GPSMap620

5.2in Colour Touchscreen Marine/Automotive Chartplotter

Navigate by land and by sea with the Garmin GPSMap 620. This full-featured marine chartplotter has a high resolution 5.2in 800x400 pixel WVGA touchscreen display and features an automotive mode when loaded with optional City Navigator NT road maps. The GPSMap 620 comes preloaded with a worldwide satellite basemap of shorelines and other surface features in the area. In marine mode, the GPSMap 620 provides 3D "mariner's eye view" above the waterline, "fish eye view" below the waterline and Auto Guidance technology that searches chart data to suggest the best passage with optional BlueChart g2 Vision data.

KEY FEATURES

- Built-in worldwide basemap
- BlueChart™ g2 Vision compatible
- 1500/1000 waypoints (marine/automotive)
- 50/10 routes (marine/automotive)
- 10,000-point automatic track log
- AIS and DSC compatible
- Optional remote antenna
- Serial and USB interfaces
- Built-in tide and celestial tables
- Turn-by-turn voice prompts

SUPPLIED WITH

Preloaded worldwide satellite basemap, marine mount with integrated vehicle power cable, lithium-ion battery pack, AC charger, USB cable, protective cover

ORDER CODE - ZGAR010-00696-01



GARMIN GPSMap450/450S

4.5in Colour Chartplotter/Fishfinder

Available as a chartplotter (Map450) or a combination chartplotter/fishfinder (Map450S), this unit features an ultra-bright 4in colour QVGA display. The GPSMap450s comes with powerful dual frequency or dual beam sonar to clearly paint depth contours, fish targets, structure, etc. It's also CANet capable, allowing sounder data to be shared with other plotter displays on your boat. Supplied preloaded with UK/Eire Bluechart cartography.



KEY FEATURES

- CANet compatible, satellite-enhanced 3D worldwide basemap
- Upgradeable to BlueChart g2 Vision cartography with optional plug in card
- Simple user interface for easy operation
- Simplify navigation with Auto Guidance

SUPPLIED WITH

Internal GPS antenna (optional external antenna), unit cover, tilt/swivel mount, cables, transducers sold separately

ORDER CODE MAP450 - ZGAR010-00515-52

ORDER CODE MAP450S - ZGAR010-00516-5A

GARMIN GPSMap550/550S & 555/555S

5in Colour Chartplotter/Fishfinder

These units offer all the features of the GPSMap 450/450S with a larger 5in colour QVGA display. Supplied preloaded with UK/Eire Bluechart cartography. Also available are the GPSMap 555 and 555S with a higher resolution 480x640 pixel VGA display.



KEY FEATURES

- All the features of the GPSMap450 and GPSMap450S
- 240x320 pixel QVGA display (GPSMap 550 & 550S)
- 480x640 pixel VGA display (GPSMap 555 & 555S)

SUPPLIED WITH

Internal GPS antenna (optional external antenna), unit cover, tilt/swivel mount, cables, transducers sold separately

ORDER CODE MAP550 - ZGAR010-00616-00

ORDER CODE MAP550S - ZGAR010-00617-00

ORDER CODE MAP555 - ZGAR010-00603-00

ORDER CODE MAP555S - ZGAR010-00604-00

Turn to the back page for pricing and ordering info NOW!

GARMIN GPSMap4008

8.4 Colour Combination Display

With an 8.4in 640x480 VGA display, this compact but powerful unit combines video-quality resolution and luminous colour with the latest in sensor and data options. Worldwide satellite imagery enhances the standard vector basemap format, and add the optional BlueChart Vision card for high-resolution aerial reference photos which help in navigating tricky harbours and channels or locating places such as marinas, fuel barges or restaurants. The g2 Vision plugin data card also allows the units to graphically depict a true 3D "mariner's eye" topside view or "fish eye" underwater navigation perspective.



KEY FEATURES

- Worldwide satellite basemap
- Auto Guidance searches all the chart features to suggest the best known charted route for navigation
- Dual Bluechart g2 card slots
- 4000 waypoints, 50 routes, 300 waypoints/route
- 3 network, 2 composite video, 1 VGA video & 4 NMEA0183/NMEA2000 ports
- Anchor drag, arrival, off-course, shallow water, deep water, proximity waypoint, clock and battery alarms
- Inbuilt celestial tables for sun and moon calculations
- Add radar with optional GMR series digital antennas
- Radar/chart overlay and split screen modes
- MARPA target tracking
- Add sonar with optional GSD21 analogue or GSD22 digital remote sounder

SUPPLIED WITH

GPS 17 WAAS sensor, A/V cable, power/data cable, mounting bracket, unit cover, flush mount, bail mount

ORDER CODE - ZGAR010-00592-00

GARMIN GPSMap4010

10in Colour Combination Display



Like the GPSMap4008, the 4010 serves as an all-in-one "nerve centre" for the Garmin Marine Network. This chartplotter has crisp, video-quality resolution on a 10.4in diagonal SVGA display as well as a worldwide, satellite-enhanced basemap. Add sonar, radar and more by connecting to the Garmin Marine Network. For even more enhanced features, add the optional BlueChart® g2 Vision card.

KEY FEATURES

- 10in 800x600 pixel SVGA display
- Worldwide satellite basemap
- Dual Bluechart g2 card slots
- Add radar with optional GMR series digital radar antennas
- Radar/chart overlay and split screen modes
- MARPA target tracking
- Add sonar with optional GSD21 analogue or GSD22 digital remote sounder

SUPPLIED WITH

GPS 17 WAAS sensor, A/V cable, power/data cable, mounting bracket, unit cover, flush mount, bail mount

ORDER CODE - ZGAR010-00690-00

GARMIN GPSMap4012

12.1in Colour Combination Display

The power of networking meets the brilliance of great design in this large-screen chartplotter, which serves as your all-in-one "nerve centre" for the Garmin Marine Network. The GPSMAP 4012 has crisp, video-quality resolution on a large 12.1in XGA display as well as a worldwide, satellite-enhanced basemap. By connecting to the Garmin Marine Network, you can add sonar and radar. For even more enhanced features, you can add the optional BlueChart® g2 Vision card.



SUPPLIED WITH

GPS 17 WAAS sensor, A/V cable, power/data cable, mounting bracket, unit cover, flush mount, bail mount

ORDER CODE - ZGAR010-00591-00

We accept most major credit and debit cards



Touchscreen Combi Displays

GARMIN GMR 18 & 24

Digital Radomes

Garmin's digital radomes bring the power of digital marine radar to all Garmin combi displays via the Garmin Marine Network. Processing takes place in the antenna itself, allowing any combi display on the network to control the radar. Digital processing also allows for more precise recognition, enhancement and filtering of radar echoes making the image easier to read and interpret.



KEY FEATURES

- GMR 18 - 18in, 4kW, 36nm range
- GMR 24 - 24in, 4kW, 48nm range
- MARPA target tracking (10 targets)

ORDER CODE GMR 18 - ZGAR010-00572-00

ORDER CODE GMR 24 - ZGAR010-00572-01

GARMIN GMR 18HD & 24HD

High Definition Digital Radomes

Sharpen your radar picture with high definition performance. The Garmin HD range of digital radomes offers a new level of radar scanning capability, with high-powered Digital Signal Processing for sharper radar imagery and improved target separation. Automatic pulse optimisation matches pulse width and repetition rate with the selected range.



Self-contained signal processing provides a more precise, easy to read signature. Data is transmitted over the Garmin Marine Network allowing you to use any compatible Garmin display as your radar screen.

KEY FEATURES

- GMR 18HD - 18in, 4kW, 36nm range
- GMR 24HD - 24in, 4kW, 48nm range
- Narrow beamwidth (5° - 18HD, 3.6° - 24HD) for the best weather penetration and target definition
- MARPA target tracking (10 targets)
- 24/30rpm (dual rotation)
- Minimum range - 20m

ORDER CODE GMR 18 - ZGAR010-00572-02

ORDER CODE GMR 24 - ZGAR010-00572-03

GARMIN GMR 404 & 406

Digital Open Array Antennas

The GMR 404 and 406 open array radars allow you to scan more of what's out there while you're on the water. With narrow beamwidth and 4kW of power, these scanners offer outstanding clarity, precision and target definition.



KEY FEATURES

- GMR 404 - 4ft, 4kW, 72nm range
- GMR 406 - 6ft, 4kW, 72nm range
- Narrow beamwidth (1.8° - 404, 1.1° - 406)
- Requires pedestal unit sold separately

ORDER CODE GMR 404 - ZGAR010-00484-00

ORDER CODE GMR 406 - ZGAR010-00484-01

ORDER CODE PEDESTAL - ZGAR010-00484-02

GARMIN GPSMap5008

8.4in Touchscreen Colour Combination Display

The GPSMap 5008 features a radical touchscreen interface, along with a satellite-enhanced worldwide basemap and an 8.4in screen that makes navigation as easy as pointing your finger. By connecting to the Garmin Marine Network, you can add sonar and radar. For even more advanced features, you can add the optional BlueChart® g2 Vision card. The GPSMap 5008 is supplied with a worldwide basemap with high-quality satellite images in place of more traditional charts. For even more detail, you can add charts easily using the SD card slots. Keep watch on your engine room or other areas of your vessel by connecting a live video feed using the 5008's video input/output.

With the optional BlueChart g2 Vision SD card, you can add a whole new dimension of exceptional features to your display - 3D mariner's eye view or fish eye view provides you with a 3D perspective of map information, both above the waterline and below it. High-resolution satellite images and aerial photographs help you orient yourself in unfamiliar areas. Auto Guidance technology searches through all relevant charts to create a route that avoids shallow water, buoys and other obstacles.

KEY FEATURES

- All the features of the 4000 series combi displays
- Innovative touch-screen design
- Dual Bluechart g2 card slots
- Add radar with optional GMR series digital antennas
- Add sonar with optional GSD21 analogue or GSD22 digital remote sounder

SUPPLIED WITH

GPS 17 WAAS sensor, A/V cable, power cable, mounting bracket, unit cover, flush mount, bail mount, marine grommet kit, NMEA0183 cable

ORDER CODE - ZGAR010-00593-00



GARMIN GPSMap5012

12.1 Touchscreen Colour Combination Display

Featuring a superb 12.1in 1024x768 pixel high resolution XGA display, the GPSMap 5012 offers all the features of the GPSMap 5008 including the touchscreen interface.



SUPPLIED WITH

GPS 17 WAAS sensor, A/V cable, power cable, mounting bracket, unit cover, flush mount, bail mount, marine grommet kit, NMEA0183 cable

ORDER CODE - ZGAR010-00594-00



GARMIN GPSMap5015

15in Touchscreen Colour Combination Display

Could this be the ultimate combi display? The GPSMap 5015 takes all the powerful features of the 5008 and 5012 units and combines them with a huge 15in 1024x768 pixel high resolution XGA display.



SUPPLIED WITH

GPS 17 WAAS sensor, A/V cable, power cable, mounting bracket, unit cover, top and bottom snap covers, flush mount, marine grommet kit, NMEA2000 drop cable, NMEA2000 T-connector and terminator kit, NMEA2000 power cable, NMEA0183 cable

ORDER CODE - ZGAR010-00692-10



Turn to the back page for pricing and ordering info NOW!

Autopilots, Instruments and VHF Radios

GARMIN GHP 10

Powerboat Autopilot System

The GHP 10 marine autopilot adds a whole new level of versatility to the Garmin marine line. This breakthrough unit gives power boat users an easy to use autopilot system to rely upon for auto-guided navigation.



The GHP 10 is controlled using the GHC 10. This control unit communicates with the autopilot system via a NMEA2000 bus, so autopilot heading data can easily be shared with other devices. Up to three GHC 10 controllers can be interfaced with a single GHP 10, ideal for boats with multiple helm stations.

The simple, intuitive interface of the GHC 10 gives boaters the confidence and security of controlling the heading of the boat at the press of a key. For example, each press of the steering soft key will change the commanded heading of the autopilot by 1°. And as a safeguard, a dedicated "Standby" key allows you to instantly place the autopilot in standby to keep it from re-engaging.

The GHC 10 communicates with the GHP 10 autopilot system via a NMEA2000 bus, so autopilot heading data can easily be shared with other devices. It can also communicate with a chartplotter for GPS-enabled route guidance over NMEA2000 or NMEA0183.



KEY FEATURES

- Suitable for all types of hydraulically steered power boats - inboard, outboard, stern-drive, diesels
- No rudder feedback unit required
- Gyro-stabilised compass
- Patented Shadow Drive™ technology automatically disengages autopilot if the helm is turned and re-engages when a steady course is held
- Hold position against wind, waves or hcurrent
- Can steer in reverse
- Bright 320 x 240 pixel QVGA colour LCD display

SUPPLIED WITH

GHC 10, Course Computer, Gyro Compass, Shadow drive, CCU/ECU interconnect cable, buzzer, ECU power cable, NMEA2000 drop cable, NMEA2000 T-connector

ORDER CODE GHP 10 - ZGAR010-00705-00
ORDER CODE GHC 10 - ZGAR010-00688-00

GARMIN GMI 10

Digital Marine Instrument Display

A radical colour multifunction display that integrates with the Garmin Marine Network and other sensors via NMEA2000 and NMEA0183. By showing data from multiple remote sensors on one display, the GMI 10 offers a streamlined approach to marine instrumentation. Display instrument data such as depth, speed, water and air temperature, wind speed/direction, fuel flow rate, engine data, fuel level and more, depending upon what sensors are connected. The GMI 10 supports more than two dozen standard NMEA2000 and more than 20 NMEA0183 data sentences and can also connect to any Garmin Marine Network chartplotters with an NMEA 2000 port.



KEY FEATURES

- Clear, bright 320 x 240 pixel colour QVGA display
- Flexible, expandable system suits all boat sizes
- GSD 22 digital sounder module
- GWS10 wind sensor with barometric pressure and air temperature
- GPS 17x 12-channel WAAS GPS sensor
- GFS 10 fuel sensor
- NMEA2000 and NMEA0183 compatible
- Waterproof
- Flush mountable



GSD 22 Digital Sounder



GWS 10 Wind Sensor



GPS 17x GPS Sensor



GFS 10 Fuel Sensor

SUPPLIED WITH

Display, mounting hardware, sun cover, power/NMEA 0183 cable, NMEA 2000 power cable, NMEA 2000 drop cable, NMEA 2000 tee & terminator kit

ORDER CODE GMI 10 DISPLAY - ZGAR010-010-00687-00
ORDER CODE GSD 22 DIGITAL SOUNDER MODULE - ZGAR010-00397-00
ORDER CODE GWS 10 WIND SENSOR - ZGAR010-010-00737-00
ORDER CODE GPS 17x GPS SENSOR - ZGAR010-010-00694-10
ORDER CODE GFS 10 FUEL SENSOR - ZGAR010-010-00671-00

GARMIN VHF 100i & VHF 200i

Fixed DSC VHF Radios

The Garmin VHF 100i and 200i range of VHF radios feature a large backlit 3.2in display, rotary knobs for volume, squelch and channel selection, up to 25W transmission power and provide full Class D DSC capability via NMEA0183 interface. The 200i has all the features of the 100i and also features a 20w loudhailer/foghorn and NMEA2000 compatibility.

KEY FEATURES

- Locate and monitor up to three other boats with position tracking capability
- Automatic and manual foghorn signals and adjustable base fog frequencies (200i)
- Two-way hailer functionality when connected to compatible horn speaker (200i)
- LOCAL receiver mode improves performance in busy port environments
- Ergonomic fist mic with built-in speaker
- Programmable international channels
- Dedicated channel 16 button
- ATIS support and private channel customisation options
- Multi-language user interface (200i)
- Supports GHS 10i full-function wired second station (200i)
- Automatic power-on when the boat starts up
- Waterproof to IPX7 standard
- Easy front flush-mounting option
- NMEA 0183 compatible
- NMEA 2000 compatible (200i)

SUPPLIED WITH

Fistmicke, power cable, hailer/NMEA cable (200i), mounting bracket, flush mount gasket, protective cover



ORDER CODE VHF 100i - ZGAR010-00754-00
ORDER CODE VHF 200i - ZGAR010-00755-00

We accept most major credit and debit cards



GARMIN Fishfinder90

4in Mono Fishfinder

Compact dual beam fishfinder that combines ease of use with Garmin's exclusive fishfinder technology. The 45° beam angle gives a greater field of view.



KEY FEATURES

- 80/200kHz, max depth 200m (600ft)
- 100 watts RMS
- See-Thru function separates fish from thermoclines
- Alarms for fish size and shallow water
- Fish ID with optional fish depth numbers

SUPPLIED WITH

80/200kHz transom transducer, quick release mount

ORDER CODE - ZGAR010-00459-00

GARMIN Fishfinder140

4.75in Mono Fishfinder

If you like the features of the Fishfinder90 but want a larger, higher resolution screen then the Fishfinder140 is the answer. With all the features of the Fishfinder 90, the Fishfinder140 adds a 8.4 x 8.4cm (4.75in diagonal) 4-level greyscale display for greater detail. The keypad layout is simple and intuitive and the unit is easy to operate.



KEY FEATURES

- 80/200kHz, max depth 200m (600ft)
- 100 watts RMS
- See-Thru function separates fish from thermoclines
- Alarms for fish size and shallow water
- Fish ID with optional fish depth numbers

SUPPLIED WITH

80/200kHz transom transducer, quick release mount

ORDER CODE - ZGAR010-00460-00

GARMIN Fishfinder160C

4.75in Colour Fishfinder

The 160C is a dual beam fishfinder with a superb sunlight-viewable colour display. With all the features of the Fishfinder140, the 160C has a higher power output (150w RMS) giving a maximum depth of up to 300m (900ft).



KEY FEATURES

- 80/200kHz, max depth 300m (900ft)
- 150 watts RMS
- See-Thru function separates fish from thermoclines
- Alarms for fish size and shallow water
- Fish ID with optional fish depth numbers

SUPPLIED WITH

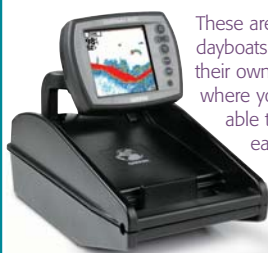
80/200kHz transom transducer, quick release mount

ORDER CODE - ZGAR010-00403-00

A closer look...

Portable Units

The Fishfinder90, 140 and 160C are also available as portable units with a battery pack and suction mount transducer.



These are ideal for small dayboats that don't have their own power supply, where you want to be able to move the it easily from boat to boat or if you want to be able to take it home with you at the end of the day.

GARMIN GSD 21/GSD 22

Remote Sounder Module



Turn your 400, 500, 3000, 4000 & 5000 series unit into a fully featured chartsounder with the GSD 21 analogue and GSD 22 digital black box modules. A range of transducers are available - call us for details.

KEY FEATURES

- 500W RMS (GSD 21) max depth 450m
- 2kW RMS (GSD 22) max depth 1500m
- Auto-ranging
- 2X and 4X auto and manual zoom
- Optional fish symbols
- See-Thru technology - separates fish from thermoclines and structure

SUPPLIED WITH

Transducers are not supplied

ORDER CODE GSD 21 - ZGAR010-00502-00

ORDER CODE GSD 22 - ZGAR010-00397-00

GARMIN Fishfinder300C

3.5in Colour Fishfinder

Ideal for recreational anglers who fish primarily in freshwater lakes, the 300C features an improved user interface, plus UltraScroll™ for fast screen updates. Supplied with a dual beam transducer, which provides excellent coverage in shallow waters.



KEY FEATURES

- Super bright, 240x320 pixel QVGA colour display
- 150 watts (RMS) 1200 watts (peak to peak)
- Auto Gain adjusts sonar sensitivity automatically
- See-Thru® technology shows weak and strong returns simultaneously
- Round flasher display mode
- White line
- 2X and 4X automatic and manual zoom
- Battery voltage indicator
- NMEA0183 output

SUPPLIED WITH

80/200kHz transom transducer, power/data cable, mounting bracket, flush mount hardware

ORDER CODE - ZGAR010-010-00682-01

GARMIN Fishfinder400C

4in Colour Fishfinder

The Fishfinder 400C combines high performance with a simple interface that makes it easy to locate fish in both freshwater and saltwater. Available with a choice of dual beam or dual frequency transducers.



KEY FEATURES

- 400 watt (RMS) dual beam, max depth 300m
- 500 watt (RMS) dual frequency, max depth 500m
- CANet compatible - sonar data to be shared with compatible Garmin combi displays
- Ultra-bright 4in QVGA colour display
- UltraScroll™ screen updates at live-action speeds

SUPPLIED WITH

Swivel mounting bracket, power/data cable, dual beam or dual frequency transducer, protective cover

ORDER CODE DISP ONLY - ZGAR010-00510-03

ORDER CODE DUAL BEAM - ZGAR010-00510-04

ORDER CODE DUAL FREQ - ZGAR010-00510-05

Turn to the back page for pricing and ordering info NOW!

Lowrance

Chart Plotters, Combi Displays

LOWRANCE HDS

5, 7, 8 & 10in HD Chartplotters, Fishfinders & Chart/Fishfinders



Lowrance's range of HDS chartplotters, fishfinders and combination chartplotter/fishfinders offer High Definition fishfinding and Insight charting which delivers unprecedented inland mapping and coastal charting detail with lightning-fast screen display updates. Amazing contour shading lends life-like perspectives to bottom structure as well as topography below and above the water. The new, more versatile and flexible HDS operating system presents a whole new way to view and select Lowrance features with much smoother moves. This new menu format is both easy to grasp and thoughtfully functional, so you can fly through keypad functions control with the greatest of ease and speed. The 8 and 10in models feature a unique new FlyWheel™ scroll dial, as soft command keys for the fastest access to functions. The inbuilt high-sensitivity 16-channel GPS+WAAS antenna makes installation easy - no external antenna to place, no mess, no fuss.

Incredible and award-winning, exclusive Broadband Sounder digital technologies are now inside all HDS sonar models for the best Lowrance fishfinding ever! As the vital link between the transducer and your HDS display, Broadband is proven to find more fish with greater sensitivity, higher definition and more display clarity with superior target separation in all cover, in thermoclines and in all water conditions.

KEY FEATURES

- Range of chartplotter only, fishfinder only or chartplotter/fishfinders with a choice of 5, 7, 8 or 10in displays
- Retrofit Ready - compatible with late-model Lowrance transducers, plus yellow Ethernet networks and NMEA 2000® network connectors
- Preloaded with Insight High Definition mapping (US) or Navionics world background map (rest of world)
- Compatible with Navionics Gold, Platinum, FreedomMaps, Fishing Hotspots, Elite, LakeMaster Pro and more
- SolarMAX™ PLUS display for the best detail in bright sunlight, the best wide-angle viewing ever achieved
- Multi station networking
- Add Digital Radar, Sirius Marine Weather, AIS, instrumentation and more via NMEA2000

ORDER CODES - CALL FOR DETAILS

LOWRANCE GLOBALMAP 5150C

5in Colour Chartplotter

Still superb value for money, this high performance compact colour chartplotter comes complete with detailed NauticPath cartography which can be expanded using chart cards.

KEY FEATURES

- 5in 256 colour sunlight viewable SVGA TFT display
- 12 Parallel channel GPS+WAAS+EGNOS antenna
- NMEA 0183 Input / Output
- 1,000 waypoints, 100 routes, up to 100 waypoints Per Route
- 42 graphic icons
- Custom window resizing
- Up to 100 savable/ retraceable plot trail - up to 10,000 points per trail
- SD / MMC card slot for electronic charts / maps
- Screen / keypad cover
- Sealed and submersible waterproof
- 2 Year Warranty
- Dimensions: 13.8 x 17.6 x 8.6 CM



ORDER CODE - ZLOW116-32NP

LOWRANCE BROADBAND RADAR

Networked Radar System



The revolutionary new advanced Broadband Radar is available for the HDS navigation system, integrating superior radar performance with state-of-the-art charting, echosounding and entertainment displays. It provides amazing target resolution, even at 1/32nm range. Docks, channel markers, moored vessels and other targets are displayed with clarity and separation, for added confidence in close quarters. Broadband technology also eliminates the "main bang" of a pulse radar - the obscured "dead zone" immediately around the vessel - which interferes with close target detection.

Because Lowrance Broadband Radar transmits at 1/2000th the power of typical pulse radars (emitting 10 times less energy than an average cell phone), the radome is safe to mount in locations never before possible. No more waiting 2-3 minutes for a magnetron to warm up - 100% solid-state design provides InstantOn™ capability.

KEY FEATURES

- 19in radome, 5.2° beamwidth
- Crystal clear image of your immediate surroundings
- Easy to use for both novice and experienced users
- First radar with no radiation hazard
- InstantOn™ with no tuning required
- Low power consumption, ideal for yachts

ORDER CODE - CALL FOR DETAILS

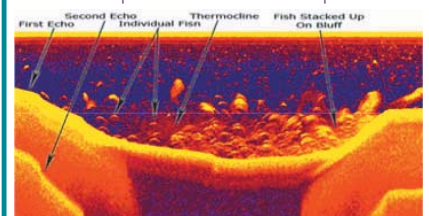


Find out more...

Broadband Sounder

The Lowrance Broadband Sounder is built into the new HDS series and it allows them to see fish in, around and through structure, while operating at high speeds in challenging conditions, even in extraordinary depths.

When fishing in shallow water, the Lowrance Broadband Sounder reduces clutter in the water column and presents a much clearer picture.



It also allows a standard Lowrance 200kHz single-frequency transducer to operate at 83kHz, resulting in a full 120° wide angle coverage. With a wider scanning area, targets remain in the cone's angle for a longer period of time, resulting in more detailed readings.

It also offers the ultimate in resolution and target discrimination, resulting in an unparalleled look at the depths below. Now anglers can find targets in grass, weed beds and other fish - holding structure like never before.

We accept most major credit and debit cards



Navigation Equipment

NASA PC NAVTEX PRO

Black Box PC Navtex

View Navtex messages on your PC! Messages are stored in its own internal memory and transferred to the PC when you get on board - instantly get the latest weather forecast from your local station or any other message stored in the PC Navtex Pro's memory.



KEY FEATURES

- Receives messages even without PC connected
- 518 & 490kHz dual frequency
- Low current consumption - can be left on 24/7

SUPPLIED WITH

Compact stub antenna, software, cable

NASA AIS ENGINE

Black Box PC AIS

Just connect a standard marine antenna and turn your PC into an AIS display! Windows 95, 98, ME, XP, 2000, and NT compatible, it includes a world map on which vessels are plotted.



KEY FEATURES

- Display target vessel's name, MMSI number, position, call sign, destination etc
- Optional GPS input
- The black box can be used with plotters or other PC applications with an AIS input

SUPPLIED WITH

"SeaClear" and "Software on Board" software, 9-pin serials data, 12 volt power cable

NASA CLIPPER

Instrument System

Budget 110mm instrument system with large clear displays. Supplied with transducers and cabling.



KEY FEATURES

- **Log** - log, trip log and trend indicator, kts/MPH
- **Depth** - keel/waterline offset, deep/shallow alarms, trend indicator, feet or metres
- **Wind** - "digital analogue", selectable pointer style
- **Duet** - combines the Clipper Speed and Depth
- **Compass** - true or magnetic display, steering function, off-course alarm
- **GPS Repeater** - COG, SOG, Lat/Long, BTW, DTW, XTE, rolling road display

NASA HF3M

MF/HF Receiver



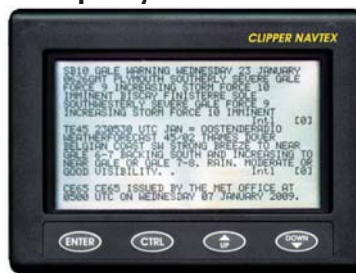
Covering 30Khz - 30Mhz, the HF3M includes a weatherfax interface and software enabling you to download weather pictures onto your PC.

SUPPLIED WITH

Antenna, PC cable, weatherfax software, power supply

NASA CLIPPER NAVTEX

Dual Frequency LCD Navtex Receiver



This dual frequency Navtex offers an ideal solution for those looking for an easy to fit, flush mount unit.

KEY FEATURES

- Ultra clear 16 line LCD with white backlighting
- Dual frequency (490 & 518kHz)
- Low power consumption (50mA)

SUPPLIED WITH

Compact stub antenna

ORDER CODE - ZNAS010.011

NASA AIS RADAR

AIS Receiver



Standalone AIS receiver that shows AIS equipped vessels in a radar-style format. A trail of previous positions clearly shows the relative track of all the targets on the screen. Requires standard VHF antenna.

KEY FEATURES

- 1, 2, 4, 8, 16 and 32nm ranges
- SOG, vessel's name, MMSI and current Lat/Long
- Low power consumption

ORDER CODE - ZNAS010.180

NASA MOBI

Man Overboard Indicator



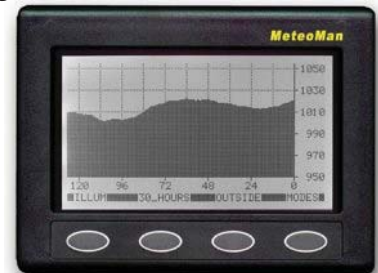
Keep your crew safe with this state of the art man overboard system, consisting of a base unit and up to eight waterproof active transponder tags, each of can be individually named. Supplied with three tags.

KEY FEATURES

- Failsafe transponder technology
- Base unit alarm if crewmember falls overboard
- Each tag is individually identified on the display
- 3 x AAA batteries will power each transponder for several weeks' continuous use

NASA METEOMAN

Digital Barometer



Precision high resolution barograph. Easy to use and reliable with low power consumption.

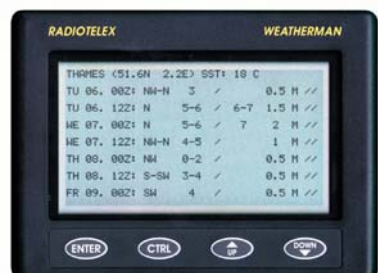
KEY FEATURES

- Wind speed and direction, ambient temperature and barometric pressure
- Chronometer, stop watch, race countdown timer, internal temperature display and battery monitor
- Optional NMEA Wind sensor

ORDER CODE - ZNAS010.220

NASA WEATHERMAN

RTTY Telex Receiver



Compact Radioteletype weather forecast receiver. Memory can store several thousand lines of text.

KEY FEATURES

- High contrast 16 lines x 40 character display
- Power save auto timer on backlight
- Spectrum screen for simple signal analysis

SUPPLIED WITH

Active micro antenna

ORDER CODE - ZNAS010.060

NASA GAS MONITOR

LPG Gas Monitor



Liquefied petroleum gas is heavier than air and if there is a leak it will collect in the bilges and could build up until it explodes. The NASA gas detector system warns if the level of LPG rises above 10% of the Lowest Explosive Limit (LEL), giving adequate warning to ventilate the area before the gas levels become dangerous.

KEY FEATURES

- Cabin mounted monitor and remote sensor
- 9-15 volts, low current consumption
- Failsafe warns of system faults
- Auxiliary output to drive external equipment
- Alarm activates if gas reaches dangerous levels

Turn to the back page for pricing and ordering info NOW!

SCANSTRUT

Antenna Mounting Solutions

Scanstrut offers a comprehensive range of installation solutions to maximise the performance on your marine electronics. All major antenna brands and models are catered for, with options for mounting radar, satcom, GPS, VHF and TV aerials and nav lights. For further product information visit www.scanstrut.com.

SAILBOAT PRODUCTS

SCANSTRUT MAST PLATFORMS

Mast Mounts

For 2kW and 4kW radomes or 30cm, 40cm and 60cm satcom antennas.

KEY FEATURES

- Market leading mast mounts
- Attach to any mast with four swivel feet
- 12 point fixing using high quality monel rivets
- Easy & quick to install with all fastenings supplied
- **NEW** for 40cm and 60cm satcom antennas
- **NEW** mount for installing FLIR Navigator camera



SCANSTRUT SELF-LEVELLING RADAR MOUNT

Radar Mounts

For 2kW and 4kW radomes - ensures radar is level with horizon at all times, preventing target loss for best possible picture. Hydraulic damping eliminates minor oscillations. Single GPS / VHF accessory available

BACKSTAY MOUNTED

- Options to mount fore or aft of backstay, suitable for single and split backstays

MAST MOUNTED

- Weighs only 3.4kg, easy upgrade - same mounting footprint as M92722 and SC20

POLE MOUNTED

- Universal pole, can be deck or transom mounted
- Option to install satcom antennas above radar

ACCESSORIES

GPS / VHF Antenna Mount



SCANSTRUT POLE MOUNTS

SC100 Pole Mount

For 2 & 4kW radomes and 30 & 40cm satcom antennas

KEY FEATURES

- Universal adjustable base, fits angled decks and sloping transoms
- Supplied with two support modules, providing maximum fore/aft support
- Easily removed for racing or winter storage

ACCESSORIES

Lifting Crane, Deck Flood Light, Light and GPS / VHF Antenna Mounts

SC2 Pole Mount

For larger radomes, open-array and satcom/tv antennas.

KEY FEATURES

- Options to install Raymarine 45 STV and 60 STV
- Available as 1m, 3m and 4m lengths, deck and through deck mounted

POLE MOUNT ACCESSORIES

Light & GPS / VHF Antenna Mounts, Deck Flood Light and Lifting Crane - lifts up to 30 kg and easily retrofitted



SCANSTRUT SCANPOD

Mounting Pods

For mounting chartplotters, radar displays, instruments and autopilot controls, manufactured from acrylic capped ABS plastic in high gloss silver or white.

KEY FEATURES

- **Helm Pods** to fit 8-15in displays, two case depths, universal fit 9.5 & 12in pedestal rails
- **Mast Pods** - universal mount system fits a wide range of mast sizes
- **Deck Pods** with swivel/tilt base to fit 8, 10 and 12in displays
- **Flex-Mount System** for rail mounting instruments



POWERBOAT PRODUCTS

SCANSTRUT POWERTOWER

Antenna Mounts

For 2kW & 4kW radomes and open array antennas

STAINLESS POWERTOWER*

- 30° aft leaning profile
- Marine grade 316 stainless steel
- Small base footprint, just 150mm square
- Raises antenna by 150mm



COMPOSITE POWERTOWER*

- 30° aft leaning stylish profile
- Single piece structure offers excellent strength and durability with a 30% weight saving
- Choice of 150mm or 350mm heights



ALUMINIUM POWERTOWER*

- 25° forward leaning profile (open array models - 30° aft leaning)
- Marine grade 6082 aluminium
- Choice of 130mm or 250mm heights



DUAL POWERTOWER*

- For radomes or open-array antenna and 30cm, 40cm or 60cm satcom antennas
- Installs satcom antenna above the radar - eliminates antenna interference and ensures maximum performance from both applications
- Integral cable management system, cables hidden from view
- Compact option available for 30cm satcom - lightweight mount and low profile, ideal installation for smaller boats
- Optional Powered Hinge System lowers satcom and radar mount to reduce height for road transport, when passing under bridges and to aid storage out of season



SATCOM POWERTOWER*

- For 30cm, 40cm and 60cm satcom antennas
- Raises antenna by 300mm for maximum performance
- Hollow stem - cables routed neatly inside
- Antenna fastens to PowerTower® using antenna mounting bolts
- Two models available - 30° aft leaning Stainless and vertical profile Aluminium



POWERTOWER* ACCESSORIES

Gantry Mount, Light GPS & VHF Antenna Mounts and 4° Base Wedge

SCANSTRUT SATCOM ANTENNA MOUNTS

Satcom Dome Mounts

For 30cm, 40cm and 60cm satcom/tv antenna.

KEY FEATURES

- Reduce antenna footprint by up to 60%, providing greater choice of antenna position
- Adapter mount fixings hidden internally
- Watertight installation, watertight seal and gland systems

ACCESSORIES

Adjustable Base Wedge (provides level mounting platform for antenna)



We accept most major credit and debit cards



Navtex, AIS

MOERER WIB2 & WIB2B

PC Navtex Receiver

Innovative module that offers simultaneous reception of Navtex messages on 490kHz and 518kHz. A separate antenna is not required as the unit contains an internal antenna. No software installation is necessary, simply plug into a spare USB port to display the Navtex messages on your PC or laptop. The Navtex messages are stored in HTML format and can be viewed using your web browser. Compatible with Windows ME, 2000, XP, Mac OS and Linux systems.



KEY FEATURES

- Simultaneous reception on both frequencies
- WIB2B includes inbuilt barograph
- Compact - only 90x57x23 mm
- Internal battery will power the unit for approx 3 days without PC
- The battery is recharged via the PC
- Non volatile memory for 762,000 characters
- Optional 12/24V or 230V charger

ORDER CODE WIB2 - ZMORWIB2
ORDER CODE WIB2B - ZMORWIB2B

MOERER WIB2BX

PC Navtex Receiver

Black box Navtex receiver with PC connection that comes complete with either a balun antenna adaptor (allowing a long wire or insulated stay to act as the antenna) or a dedicated compact active antenna. Sail boat owners will appreciate the ability to use a stay as an antenna without more masthead antenna clutter.



KEY FEATURES

- Connect to PC via USB interface
- True dual channel receiver - simultaneous reception of both frequencies
- Inbuilt highly accurate (to 0.1hPa) barograph with 7 day log

ORDER CODE C/W ANTENNA - ZMORWIB2BX-A
ORDER CODE C/W ADAPTOR - ZMORWIB2BX-B

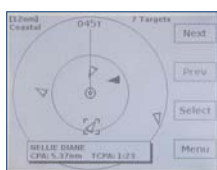
VESPER AIS WATCHMATE

AIS Information Repeater

Compact AIS repeater with 5in 320x240 pixel backlit display. The AISWatchMate is a valuable tool to help avoid collisions at sea, displaying data from all AIS equipped vessels in your vicinity. It can simultaneously track up to 128 targets and audibly warn if a potentially dangerous situation exists. *Note: This is not an AIS receiver, an AIS receiver/transceiver is required to work in conjunction with this product.*

KEY FEATURES

- Graphical radar style display
- Ultra low power consumption
- Unique CPA plot shows whether target will pass ahead or behind to determine the best collision avoidance strategy
- Organises targets by priority for operation in high traffic areas
- Filters eliminate false alarms when navigating in crowded shipping areas
- Customisable profiles (anchored, harbour, coastal and offshore) tailor alarm settings to your situation
- Handles all types of AIS (class A and B), aids to navigation and safety messages)
- Two NMEA0183/RS232 inputs and one output
- AIS data can be output to PCs and chartplotters/combi displays
- External alarm output
- Waterproof to IP67/CFR46



Unique CPA plot

ORDER CODE - ZVESWM

MOERER WIBE

PC Navtex/Weatherfax Decoder

Self contained black box Navtex and Weatherfax receiver with USB PC connection that enables you to display Navtex messages and synoptic weather charts on your PC or laptop.



KEY FEATURES

- Receives HF Fax, NAVTEX (490 & 518KHz), SYNOP and sea weather forecasts
- Europe-wide weather information from Northwood and DWD
- Built in electronic barograph
- No software to install - works through your web browser
- Memory card slot to store images for viewing on PDAs or monitor
- Low power consumption
- Requires connection to external active antenna (optional) or insulated backstay

ORDER CODE - ZMORWIBE

MOERER WIB2D

Navtex Receiver & Barograph

Smaller than a pack of cigarettes, the WIB2D incorporates a sophisticated dual channel Navtex receiver and built-in LCD display to show weather and navigation information. There is no need for an external antenna and it has a built-in rechargeable battery which can last up to three days. It can also be connected to a PC and the data viewed on screen or printed out. Its portable format is ideal for charterers or grabbing the latest weather and nav information whilst at home or in the office prior to setting sail.



KEY FEATURES

- Simultaneously monitors 490kHz & 518kHz
- Display of air pressure trends over the past 48 hrs
- Automatic message decoding
- Charge battery via USB lead, 12V DC cable or optional 230V charger
- Compact - only 103 x 62 x 26.5mm
- Supplied with USB connection/charge cable (optional 12 v and 220v chargers) and software for Windows 2000, XP, VISTA

ORDER CODE ZMORWIB2D

EASY AIS2

Black Box Dual Frequency AIS Receiver

Easy AIS2 is a dual frequency black box AIS receiver that makes integrating AIS with your plotter, combi display, PC or laptop simple. Improved drivers and matching allows cable lengths of up to 15m between the Easy AIS and chartplotter/PC without data loss.



KEY FEATURES

- Very low power consumption
- NMEA compatible
- GPS data in and out
- Robust metal case, only 140 x 140 x 36 mm

ORDER CODE - ZEAS2

EASY SPLIT2

VHF Antenna Splitter

The EasySplit2 removes the need for a separate VHF antenna for an AIS transponder and allows a single antenna to be shared with a VHF radio.

KEY FEATURES

- Simplifies installation - no need for two VHF antennas
- VHF antenna input, VHF radio output, AIS output, FM radio output
- Same dimensions as EasyAIS2



ORDER CODE - ZEASSP2

Turn to the back page for pricing and ordering info NOW!

TACKTICK MICRONET WIRELESS INSTRUMENTS

Tacktick's revolutionary instrument system sets you free from the inconvenience of traditional instrument systems - these unique instruments are wireless, which means that they are easy to install - a typical installation can be done in just a few hours as there is no need to drill holes in bulkheads, run cables through headlining or down the mast. The displays are solar powered with integrated lithium batteries that power the unit for life. Power consumption is so efficient that units can run autonomously for up to 300 hours.

For yachtsmen looking for performance advantage the elimination of wires in the mast not only reduces spar weight but also lowers the boats centre of gravity. Position the displays where you want them - with clip in cradles, displays can be positioned anywhere on the boat so you can view the information where and when you need it.

All Tacktick products are sealed for life and are totally waterproof (submersible to 10m), which also eliminates condensation. With no cabling, reliability is also increased since wiring faults typically account for 80% of system problems on boats.

TACKTICK T033 WIND SYSTEM

Entry Level Wind System

The brand new T033 wind system is the ideal solution for cruising yachts 35ft or under. Wind speed and direction information is delivered wirelessly from the wind transmitter, whilst the display itself is powered by your boat's 12-volt battery.



KEY FEATURES

- True and apparent wind speed and direction (true wind requires boat speed)
- Large clear analogue display
- Display backlighting for night sailing
- Completely waterproof to 10 metres
- Simple installation
- Easy calibration



SUPPLIED WITH

Wind transmitter and display unit

ORDER CODE - ZTACT033

TACKTICK T100 SPEED/DEPTH

Bidata System

The Tacktick Speed/Depth system is a compact solution for those on a budget or where space is limited. The single display shows boat speed, depth and distance travelled.



KEY FEATURES

- Speed, Depth and Distance
- Complete system in one box
- Quick to install
- Easy to expand system
- Cost effective solution



SUPPLIED WITH

Dual digital display, through hull speed and depth transducers, hull transmitter

ORDER CODE - ZTACT100

BREAK FREE!



TACKTICK T108 CRUISE PACK

Wireless Speed, Depth, Wind System

This great value package is ideal for sailboats of all sizes, coming complete with a dual digital display and an analogue display.



KEY FEATURES

- Speed, Depth, Distance
- Wind Speed and Direction
- Calculated functions
- Compatible with other manufacturers via NMEA
- Cost Effective Solution
- Multi Function Displays
- Easy to Install



SUPPLIED WITH

T111 Dual Digital Display, T120 Wind Transmitter, T112 Analogue Display, T121 Hull Transmitter, T910 Speed and Depth

ORDER CODE - ZTACT108

TACKTICK T101 WIND

Bidata System

The wireless T101 Wind System does away with all the inconvenience of installing a traditional wind system - there's no cable to be run down the mast, meaning the mast doesn't need to be stepped, plus the weight saved improves the yacht's performance. The large clear 'analogue' display shows wind direction (both 360° and close hauled) and wind speed.



KEY FEATURES

- Wind Speed and Direction
- No Cables
- Easy to install
- Easy to expand system
- Also available -

T107 Powerboat Wind System

SUPPLIED WITH

Wind transmitter and display unit

ORDER CODE SAILBOAT WIND - ZTACT101

ORDER CODE POWERBOAT WIND - ZTACT107

TACKTICK T106 REMOTE DISPLAY

Handheld Wireless Remote Display

Not just a remote control, this is an independent Micronet wireless palm sized display. The dot matrix screen not only shows all system data, but it also incorporates a rolling road as well as performance pages for displaying uploads from tactical software, and it can function as a remote control for Micronet displays. Add as many handsets as needed for key crew members.



KEY FEATURES

- Wireless handheld display
- Repeats a wide range of data
- Palm sized, easy to hold
- Totally multifunction
- Graphic multi-line display
- Solar powered
- Can be used with other manufacturers' equipment



SUPPLIED WITH

Remote display, universal wireless NMEA interface

ORDER CODE - ZTACT106

TACKTICK T210 MAXI DISPLAY

Wireless Mast Repeater

Features high contrast, 50mm digits for highly visible and accurate data in all conditions. Customise the display to show only the data options you want, or use the innovative Auto Leg function which changes the display automatically to show the info you need for each leg of the course without the need to press a button. Control is provided by the Remote Display.



KEY FEATURES

- Displays any single data type
- Line Bias, Wind Shift and Timer functions
- Set, Drift, Turn and Course to Steer functions
- Backlighting to 3 levels, in orange or red
- Totally waterproof (submersible to 100m)
- Lightweight - weighs only 360g

ORDER CODE - ZTACT210

We accept most major credit and debit cards



Combi Displays, AIS & Instruments

FURUNO NAVNET 3D

Multifunction Navigation System

A groundbreaking navigation system that introduces new concepts in user interface design that makes this powerful system easy to use. NavNet 3D introduces a new dimension to charting with Full Time 3D chart rendering - choose traditional 2D top-down view or pan/zoom the chart to any 3D angle instantly - there's no delay switching to "3D mode" as with other chartplotters as NavNet 3D operates in this 3D environment at all times. The cutting edge "Time Zero" technology gives instant chart zoom, panning and display mode changes seamlessly with no lag.

With NavNet 3D's true 3D environment, you can see all the information you want - radar overlay, AIS, chart symbols, depth soundings etc. Choose the type of charts you want to view - raster, vector or combine them with Furuno's Satellite Photofusion charts, giving unprecedented control over your charting environment.

FURUNO MFD8 & MFD12

NavNet 3D 8.4in & 12.1in Combi Displays

Choose between an 8.4in or 12.1in colour sunlight-viewable displays with high brightness and anti-reflective glass coating that allows use even in direct sunlight. The low profile design is ideal for flush mounting or can be bracket mounted.



KEY FEATURES

- 8.4in TFT 640x480 pixel or 12in TFT 800x600 pixel displays
- Up to 2,000 waypoints, 200 routes, 100 waypoints per route
- Head up, course up, North up, relative motion or true motion display modes
- True 3D environment for a more instinctive chart presentation
- Simple, intuitive operation using the Rotokey and Scrollpad controls
- Dedicated 3D button - toggle between 2D perspective and favourite 3D angle
- High-resolution satellite photography can be fused with raster or vector chart information, viewable in 2D or 3D
- No preset chart scales - zoom to the exact magnification level you wish
- New Ultra High Definition (UHD) Digital Radar
- 3D chart-radar overlay (requires SC30 or SC50 satellite compass input)
- Furuno Digital Filter (FDF) Fish Finder

ORDER CODE 8IN COMBI - ZFURMFD8
ORDER CODE 12IN COMBI - ZFURMFD12

FURUNO NAVNET 3D BB

NavNet 3D Black Box Navigation Systems

The NavNet 3D BB system offers all the features of the MFD8/MFD12, linking a powerful NavNet3D black box processor with a range of LCD displays, from 12.1in up to 17in.



KEY FEATURES

- 12.1in TFT Display Control Unit with integral keypad
- 12.1in SVGA marine monitor, 800x600 pixels
- 15in XGA marine monitor, 1024x768 pixels
- 17in SXGA marine monitor, 1280x1024 pixels
- Dedicated control keyboard

ORDER CODES - CALL FOR DETAILS

FURUNO FA30

AIS Module

The FA30 brings AIS to the Furuno NavNet2 and NavNet 3D systems. Real time AIS information can be incorporated into radar or chartplotter displays, including Closest Point of Approach and Time to Closest Point of Approach which aids in recognising possible collision dangers.

KEY FEATURES

- Targets displayed with SOG/COG vectors
- Displays full AIS data of target vessel
- PC interface via Ethernet connection
- Supplied with AIS Viewer software
- NMEA0183 output to third party systems



ORDER CODE - ZFURFA30

FURUNO F150

Instrument System

The Furuno F150 instrument system is designed to meet the needs of all sail and power vessels, providing a wide variety of precise information even under the harshest conditions and enhancing your safety at sea. Fully Plug and Play, each display uses standard NMEA2000 connectors and cabling and can be integrated with any NavNet 3D or other NMEA2000 compatible system.

KEY FEATURES

- Bright backlit displays with wide viewing angles
- Auto-Backlighting feature minimises power consumption
- NMEA2000 interface offers "Plug and Play" networking
- Easy installation with flush-mount design
- Ideal for mast or bulkhead mounting configurations
- White face "F1 Style" gauges provide maximum contrast and visibility
- Organic Light Emitting Diode (OLED) backlighting reduces power consumption

INSTRUMENTS AVAILABLE

- Multi - multifunction digital display with large, clear characters
- Digital - multifunction three-line digital combination display
- Wind - analogue 360° wind display
- Close Haul - analogue close hauled/running display
- Course Pilot - analogue compass/steering display
- Rudder - analogue rudder angle display



ORDER CODES - CALL FOR DETAILS

Turn to the back page for pricing and ordering info NOW!

Combi Displays, Chartplotters, GPS & Navtex

FURUNO NAVNET2

Multifunction Navigation Displays

Advanced integrated navigation system incorporating GPS, chart plotter, radar and fish finders. Available as 7in colour and 10.4in colour LCD TFT display..



KEY FEATURES

- Supplied standard as Chartplotter or Chart radar
- Ethernet based network
- Multiple display option
- Each display operates as an individual unit or as part of the network
- Over 50 different display modes
- Common user interface and control panel
- Selectable background colours
- Optional NTSC/PAL interface for TV/VCR/DVD/PC video input (10.4in only)

NAVIGATION FEATURES

- 12 channel network GPS antenna
- C-Map Max chart compatible
- Head-up, North-up, Course-up and True Motion Radar display modes
- Course Plot, Alpha-numeric Nav Data, Steering and Highway display modes
- 8000 trackpoints, 1000 waypoints, 200 routes

RADAR FEATURES

- Radar power output ranges from 2.2kW to 6kW
- Split screen and Radar overlay
- Dual EBLs and VRMs
- Radar Guard Zone



ECHOSOUNDER FEATURES (REQUIRES ETR6)

- Dual-frequency (50/200kHz), 600W or 1kW RMS fishfinder option

ORDER CODES - CALL FOR DETAILS

MAXSEA NAVNET

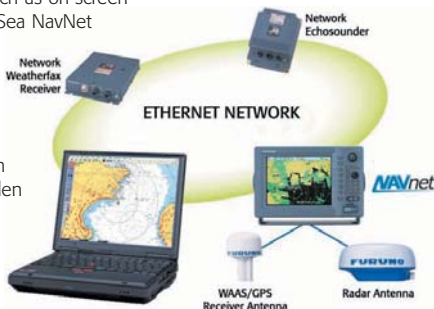
Navigation Software

Produced exclusively for Furuno, MaxSea NavNet is a comprehensive user-friendly navigation tool offering increased efficiency and exclusive capabilities including seamless chart display, advanced weather forecast overlay, real-time 3D seabed images and more. Its intuitive tool palette makes operation fast and easy.

Analyse data from multiple sources by integrating with the NavNet system, sharing data from radar, GPS, echosounder, weatherfax receiver and more. This allows advanced features such as on-screen radar chart overlay. But MaxSea NavNet takes the overlay facility one stage further, enabling you to overlay information on top of the chart - tracks, marks, hazards, currents, water temperature etc. Each layer can be shown and hidden with a single mouse click.

KEY FEATURES

- Shared navigation data with the NavNet network
- Full control of NavNet displays
- Compatibility with most chart formats, both raster (ARCS, Mapmedia, Seafarer, Maptech, NDI, Softchart) and vector (S57, C-Map 93 and NTPC)
- Advanced ARPA and AIS mobile target tracking
- Free up to date ocean conditions and weather forecasts via email
- PBG (Personal Bathymetry Generator) creates 2D and 3D images of the seabed



ORDER CODE - CALL FOR DETAILS

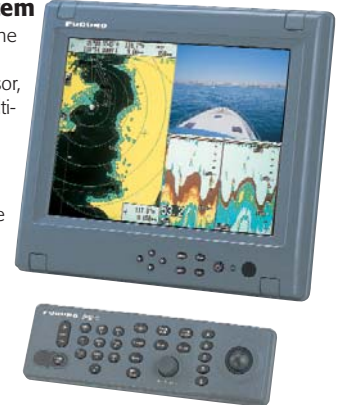
FURUNO NAVNETBB

Black Box Multifunction System

Now get NavNet with a larger display! The NavNet Black Box system separates the display from the control unit and processor, allowing you to use virtually any size multi-sync PC monitor with a VGA input.

KEY FEATURES

- Standard external video input/output
- Radar options from 18in 2.2kW radome up to a 6.5ft 12kW open array, max range of 72nm
- Off-center, Echo trail, North Up modes
- True or Relative Motion etc
- Chart-radar overlay
- 11 - 40V DC



ORDER CODES - CALL FOR DETAILS

FURUNO GP7000 & GP7000F

Colour 7in Widescreen Chartplotter and Chartsounder

Colour Chartplotter or Chartsounder with Course Plot, Nav Data, Steering and Highway display modes. The 50/200 kHz dual frequency echosounder can be displayed full or split screen with the course plot mode.

KEY FEATURES

- Available as a chartplotter (GP7000) or combination chartsounder (GP7000F)
- User friendly operation with rotary control and softkeys
- Dual chart slots
- North up, course up or auto course up
- 5000 waypoints, 200 routes, 12,000 trackpoints
- 600W or 1kW dual frequency 50/200kHz echosounder, max depth 1200m
- Bottom-lock, Bottom-zoom, Marker-zoom, A-scope



ORDER CODE GP7000 - ZFURGP7000
ORDER CODE GP7000F - ZFURGP7000F

FURUNO GP32 & GP37

Fixed GPS

High performance GPS navigator with large backlit waterproof display. Available as a 12 Channel WAAS enabled GPS (GP32) or dGPS (GP37).

KEY FEATURES

- Navigational data, track plotter and highway displays
- Graphic and numerical data display
- Up to 950 waypoints, 50 routes, 1,000 trackpoints
- Low power consumption - less than 3W
- NMEA output



ORDER CODE GP32 - ZFURGP32
ORDER CODE GP37 - ZFURGP37

FURUNO NX300D

Dual Mode Navtex Receiver

One of our most popular products, this compact dual frequency (518/490kHz) unit has a high contrast 4.5in display and receives current and early warning weather reports and navigation alerts worldwide, within 200-400nm of shore.

KEY FEATURES

- Printout available via PC
- Can be used as a Nav data repeater
- Low power consumption

SUPPLIED WITH

Antenna



EDITOR'S CHOICE

ORDER CODE - ZFURNX300D

We accept most major credit and debit cards



Navigation & Communication

FURUNO M1623

6in Mono LCD Radar

BEST SELLER! A great value high contrast, low power consumption LCD radar which gives detailed images of coastline and targets at short ranges thanks to narrow pulselengths and dual IF bandwidths. The display is waterproof, making it ideal for cockpit or flybridge installation.

In the Watchman mode, the antenna is stopped and the screen displays nav data only. The radar wakes up at a specified time interval and operates for 1 minute. If a target enters the guard zone, an alarm sounds and the radar goes into its normal operating mode. The alarm may also be set to trigger if a target leaves the guard zone.

KEY FEATURES

- 15in 2.2kW radome, max range 16nm
- Excellent screen clarity, day and night modes
- Normal, Off-Centre & Watchman operating modes
- EBL, VRM, TLL output (Target Lat/Long), Cursor Lat/Long input/output, Echo Trail, Guard Zone Alarm

OUR VERDICT

The best radar you'll pick up for under £1000. Great performance and excellent value for money.



EDITOR'S CHOICE

- 12 range scales
- Interface with GPS and chart plotter
- Waypoints displayed as "lollipop" marks
- Automatic receiver tuning
- Automatic sensitivity and anti-clutter controls

SUPPLIED WITH

2.2kW 15in radome antenna & 10m cable

ORDER CODE - ZFURM1623

FURUNO SC30

Satellite Compass



Revolutionary 2-antenna satellite compass that provides highly accurate attitude data to equipment such as radars, chartplotters, autopilots, AIS etc. The all-in-one design integrates perfectly with all NavNet combi displays and the FI-504 instrument display, but NMEA2000 output means it can be used with any compatible third party equipment.

KEY FEATURES

- Heading accuracy of 1.0°rms
- Short start-up time of 3 minutes
- Follow-up rate of 45°/s exceeds requirements for high speed craft
- NMEA2000 interface standard

ORDER CODE - ZFURSC30

FURUNO SC50

4.5in LCD Satellite Compass



GPS-based compass offers unrivalled accuracy of up to 0.8°, ideal for Radar, AIS, ECDIS or any equipment that normally requires a gyrocompass.

KEY FEATURES

- Four display modes - Compass Rose, Steering, Nav Data and Heading
- Tri-antenna reduces effect of roll, pitch and yaw
- Heading output in NMEA0183, IC 61162-1 and AD-10 (25ms update)
- Short settling time - only 4 minutes

ORDER CODE - ZFURSC50

FURUNO NAVPILOT 500

Inboard Autopilot System



Modular system for sail and power. The control unit features a 4.6in LCD display, rotary control knob and dedicated function keys. Advanced self-learning steering algorithm adjusts to suit the boat's speed, trim and draft as well as tide, wind and weather effects.

KEY FEATURES

- Advanced Auto automatic ground tracking control
- FishHunter feature steers boat in a holding pattern around target when connected to fishfinder or radar
- NavNet compatible

ALSO AVAILABLE

- NavPilot 511 - all the features of the NavPilot 500, but with a compact control head

SUPPLIED WITH

Control unit, course computer, heading sensor and rudder feedback unit. Drive must be specified.

ORDER CODES - CALL FOR DETAILS

FURUNO FM2721

Fixed VHF Radio

Easy to use Class D DSC VHF that includes all International, US marine and weather channels. Fully featured handset with Distress Alert button in cradle.

KEY FEATURES

- Clear backlit LCD display
- Numeric keypad channel selection
- Dual channel watch

SUPPLIED WITH

Cradle, loudspeaker, transceiver module

ORDER CODE - ZFURFM2721



FURUNO FCV620 & FCV585

5.6in & 8.4in LCD Colour Fishfinders

Fantastic new high performance 5.6in (FCV620) and 8.4in (FCV585) 50/200kHz dual frequency fishfinders with wide angle sunlight viewable displays. Selectable single, dual, zoom and Nav data modes.



KEY FEATURES

- FCV620 - 5.6in display, 600W output
- FCV585 - 8.4in display, up to 1kW output (requires MB-1100 matching box)
- Rotary knobs for gain and mode select
- Digital filter adjusts gain, STC and output power for outstanding detection in shallow and deep water
- Cruising and fishing auto modes
- Fast pulse transmission rate for outstanding shallow water echo presentation
- TLL output for GPS plotter display
- 8/16/64 colour echo presentation for displaying subtle echo images
- Customised nav data display when interfaced with appropriate sensors
- Swivel mount bracket or flush mountable

ORDER CODE FCV620 - ZFURFCV620

ORDER CODE FCV585 - ZFURFCV585

FURUNO LS4100 & LS6100

5in & 6in LCD Mono Fishfinders

Easy to use dual frequency mono 5in (LS4100) and 6in (LS6100) fishfinders with the highest resolution display in their class.



KEY FEATURES

- 50/200kHz, 300W RMS, max depth 500m
- White Line and "Sea-Through" technology discriminates echoes from the sea bed
- Unique bottom lock fish alarm provides consistent audible bottom fish detection in varying depths
- Displays speed and wind data if interfaced with relevant sensor
- Mini-navigator feature provides 12 "goto" waypoints with programmable names

SUPPLIED WITH

Transducer must be specified when ordering

ORDER CODE LS4100 - ZFURLS4100

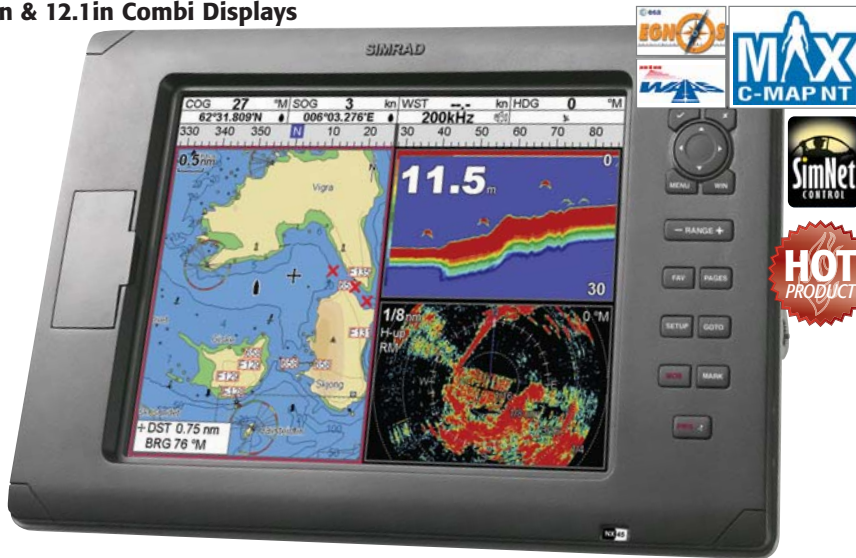
ORDER CODE LS6100 - ZFURLS6100

Turn to the back page for pricing and ordering info NOW!

Combi Displays, Instruments, Autopilots & VHF Radios

SIMRAD NX40 & NX45 NAVSTATIONS

8.4in & 12.1in Combi Displays



The new NX40 and NX45 NavStation systems are designed to meet the requirements for both power and sailboats. The 8.4in NX40 and 12.1in NX45 feature easy to use controls and a sunlight viewable bonded high-resolution TFT colour display, perfect for presenting the detailed bottom contour data, land data, aerial photos of harbours and inlets, Dynamic Surface Currents, Tidal Predictions, Flashing NavAids and other features of the advanced C-Map MAX cartography. The dual chart slots enable two charts to be displayed simultaneously.

KEY FEATURES

- C-Map MAX enhanced cartography
- 2kW & 4kW radome, 6kW open array radar options
- Inbuilt 600/1000W high performance echosounder
- NMEA2000-based SimNet compatibility - interface with Simrad instruments, autopilots and VHF radios

- NMEA0183 interfacing with third party products
- AIS integration - display vessel positions and information directly on the chart display
- Fuel and engine monitoring
- Video input for cameras etc

ORDER CODE NX40 - CALL FOR DETAILS

ORDER CODE NX45 - CALL FOR DETAILS

SIMRAD IS20

Instrument System

The new IS20 range consists of two digital and four analogue displays. The multi-function Graphic display can shift quickly between a range of large, easy-to-read digital readouts from the SimNet data bus. The digital Combi speed/depth system is ideal as a stand-alone system and can also be remotely controlled from an IS20 Graphic, making it ideal as a second instrument station, offering a variety of digital data combinations including Speed, Depth, Temperature, Trip Log and Passage Time. The classic analogue Compass, Rudder Angle, Wind Direction and Tack displays complete the IS20 range.



KEY FEATURES

- SimNet data bus integration
- Flexible multifunction digital displays
- Easy to read analogue displays
- Thin SimNet cables make installation easy
- Plug-and-play operation
- New SimNet single multi-transducer provides all-in-one speed, depth and temperature data

ORDER CODES - CALL FOR DETAILS

SIMRAD AP24 & AP28

Inboard Autopilot Systems

Building on Simrad's legendary autopilot expertise, the new AP24 and AP28 autopilot systems integrate seamlessly with the new IS20 instruments and NX40/NX45 combi displays via Simrad's high speed SimNet data bus. Virtual Rudder Feedback means that no rudder feedback unit is needed for outboards and stern drive boats. Automatic Tuning compensates for the unique handling characteristics of your boat and sea conditions, ensuring optimum performance. Advanced Wind Steering provides unbeatable autopilot performance for any sailing vessel.



KEY FEATURES

- Multi station operation
- Suitable for all steering types, sail and power
- Complete set of Turn Patterns including Depth Contour Tracking, programmable S-turn, Zig-Zag, Continuous turn, Square patterns and many more
- Improved steering with full Rate Of Turn control
- No Drift Course - maintain set Course Over Ground even in severe wind and current conditions

ORDER CODES - CALL FOR DETAILS

NORTHSTAR VHF 710

Fixed DSC VHF

The Northstar Explorer 710 is fully DSC capable and features call logs with instant call back capability. The large LCD presents 4 lines of text to display channel names, GPS position, GPS speed, GPS course or time, and DSC messages.



KEY FEATURES

- Large display (46 x 26 mm) with four lines of text (12 characters per line)
- Fistic with channel select, power and priority channel buttons
- Program three favourite channels for easy selection
- Call logs with instant Call Back capability
- Automatic GPS boat position and time when connected to a GPS receiver

SUPPLIED WITH

Fistic, flush and bracket mounts, dust cover

ORDER CODE - ZNOR22050110

NORTHSTAR VHF 725

Fixed DSC VHF

The Explorer 725 includes a built in barometric pressure sensor which provides prediction of weather and fish activity displayed as a digital graph on the display. The wireless second station, the Explorer 705 is sold separately (up to two additional stations per radio). The Track-Your-Buddy feature allows you to combine your Explorer 725's DSC position polling with Track-Your-Buddy enabled Chartplotter or Combo units to show the location of up to three other boats on the chart display. The wireless second station mic features the same large LCD and complete control of all DSC and radio functions. Use the Intercom function to communicate between the base and the second-station handset. The handset is fully waterproof (IIS7) to withstand the tough marine environment.



KEY FEATURES

- Fistic with alphanumeric keypad plus channel, power and priority channel buttons
- Optional full function second station handset
- Super large, clear FSTN display with amber backlighting on both units
- Instant access to up to 3 of your favourite channels with easy user programming
- Select from several scanning modes such as All-Scan and Favourite Channel scan modes
- Automatic GPS boat position and time when connected to a GPS receiver
- Local/Distant feature eliminates unwanted interference in high traffic areas
- Call logs with instant call back capability

SUPPLIED WITH

Fistic, flush and bracket mounts, dust cover

ORDER CODE - ZNORAA010166

We accept most major credit and debit cards



Combi Displays, Chartplotters & Sounders

NORTHSTAR M84 & M121

8.4in & 12.1in Colour Combi Displays

Superb 8.4 & 12.1in colour multifunction displays that integrate GPS, chartplotting, sonar, fuel management and video into one sleek, low profile unit. The daylight view 800x600 pixel SVGA colour screens can display data in full screen or up to four split screen panes, ensuring the information you need is at hand at all times.



KEY FEATURES

- Inbuilt 32Mb world map
- Dual C-Map MAX chart card slots
- High definition digital radar
- Dual frequency 50/200kHz echosounder
- Inbuilt 1kW echosounder transceiver automatically adjusts power output to match transducer fitted
- Max depth 1000m
- SmartCraft engine performance management



- Petrol and Diesel fuel management
- RCA video input - connect deck or engine room monitoring cameras, DVDs, camcorders etc (separate audio output required)
- VHF DSC interface - display call details on screen
- "Track-Your-Buddy" on-chart display integration with Northstar VHF radios
- Waterproof to IPX7

OPTIONAL ACCESSORIES

Transducers, fuel management kits, SmartCraft gateways and other peripherals must be ordered separately

ORDER CODE M84 - WZNORNS006634
ORDER CODE M121 - WZNORNS006624

NORTHSTAR 8100i SERIES

12in & 15in Colour Combi Displays

Revolutionary combi display providing navigation, multimedia entertainment, instrumentation, cameras, fuel management, SmartCraft engine monitoring and more. High performance digital radar offers MARPA, radar chart overlay and networked radar means that any display can access the radar. Choose from the 12in touchscreen display with integral keypad, or the 15in touchscreen display with separate control pad.



KEY FEATURES

- Touch screen control for unparalleled ease of use
- C-Map MAX PRO cartography
- High performance networked digital radar with
- 1kW networked digital sounder
- Customisable displays
- DVD, video, CD and Digital Music player



ORDER CODES - CALL FOR DETAILS

NORTHSTAR EXPLORER 310 SERIES

Instruments

A competitively priced instrument range for sail or power applications.

KEY FEATURES

- 7 instruments covering a wide range of applications
- Simple to use, simple to install
- Speed - Avg, Max & Trim speed, Log, Water Temp, Battery Voltage, Countdown Timer
- Depth - Shallow & Deep alarms, NMEA0183 output
- Wind - Digital wind display
- Analogue Wind - Traditional wind display
- Multi - Combined speed and depth display
- Repeater - instrument and NMEA/GPS repeater
- Fuel - fuel gauge, fuel flow, real-time fuel economy, estimated range, single or twin engine kits



ORDER CODES - CALL FOR DETAILS

NORTHSTAR EXPLORER 600

Colour Chartplotter/Fishfinders

Combination chartplotters and fishfinders which also offer features such as petrol or fuel management and SmartCraft™ compatibility.



KEY FEATURES

- Explorer 650 - 5in 320x234 pixel display
- Explorer 657 - 5in 640x480 pixel display, AIS input
- Explorer 660 - 7in 800x480 pixel display
- 3000 waypoints, 25 routes, 5 tracklogs
- Inbuilt fuel computer (requires fuel kit)
- Connect to a DSC VHF and plot the real time position of up to 3 other boats directly on the chart
- 50/200kHz dual frequency fishfinder, 600W RMS
- Max depth 600m

ORDER CODES - CALL FOR DETAILS

NORTHSTAR EXPLORER 500

GPS Chartplotters

Northstar's popular range of C-Map MAX chartplotters have an inbuilt 16Mb regional background map. The Explorer 550 is available with an internal or an external GPS antenna, the Explorer 557 and 6.4in Explorer 567 feature higher resolution displays and AIS input.



KEY FEATURES

- Explorer 550i - 5in 320x234 pixel display, int GPS
- Explorer 550 - 5in 320x234 pixel display, ext GPS
- Explorer 557 - 5in 640x480 pixel display, AIS input
- Explorer 567 - 6.4in 640x480 pixel display, AIS input
- 3000 waypoints, 25 routes, 5 tracklogs
- Inbuilt fuel computer (requires optional fuel kit)

SUPPLIED WITH

12 channel GPS antenna, mounting bracket

ORDER CODES - CALL FOR DETAILS

NORTHSTAR EXPLORER 400

Fishfinders

Easy to use colour fishfinders. Display either dual or single frequency, narrow or wide angle. Max depth 600m



KEY FEATURES

- Explorer 457 - 5in 640x480 pixel display,
- Explorer 467 - 6.4in 640x480 pixel display
- Dual frequency 50/200kHz, 600W output
- Low battery, shallow, deep, water temperature and temperature rate of change alarms

ORDER CODES - CALL FOR DETAILS

Turn to the back page for pricing and ordering info NOW!

KVH TRACPHONE FB250/FB500

Voice and Broadband Internet Access

The perfect solution for boat owners who want the same Internet speeds they enjoy at home. The FleetBroadband system gives you "always on" broadband access to email, the internet and Virtual Private Networks (VPNs) as well as simultaneous, reliable telephone service at an affordable rate.



KEY FEATURES

- Fully automatic operation and dynamic stabilisation, even in the roughest seas
- Choice of dome sizes to match your Tracvision satellite TV system dome.
- No fixed monthly fees and affordable pay-as-you-go service
- Convenient shipwide integration with PABX systems
- FB250 up to 284Kbps standard, 128Kbps streaming
- FB500 up to 432Kbps standard, 256Kbps streaming

ORDER CODES - CALL FOR CUSTOM QUOTE

KVH TRACVISION M2

"At Anchor" Satellite TV System

KVH's TracVision M2 "at anchor" satellite TV system is a great choice for boaters who want to watch Satellite TV while at anchor or at the dock. The TracVision M2 offers the highest signal strength available for "at-anchor" systems, along with KVH's high-efficiency 14.5in diameter antenna with Ring Fire™ technology, which offers reception and signal gain previously only available in 18in diameter systems! Enjoy KVH's award-winning quality and reliability at an affordable price thanks to this fully automatic system.



KEY FEATURES

- Ideal for us on boats as small as 25 feet
- Includes antenna, deluxe integrated 12V mobile receiver and backlit RF/IR remote control – everything you need for satellite TV onboard in one box
- Fully automatic satellite acquisition and satellite
- Ultra-quiet motors, no cable wrap, single-cable install, and exclusive, user-friendly onscreen system set-up and control
- Height 45cm, diameter 40cm

SUPPLIED WITH

Compact dome, Junction box, Antenna cable (15m). Requires a digibox or satellite decoder (eg Sky box)

ORDER CODE - CALL FOR CUSTOM QUOTE

KVH TRACVISION M3DX

Compact Satellite TV System

If you thought your boat was too small for satellite TV then think again! The M3DX is the world's smallest, fully stabilised mobile satellite television antenna system. Ideal for boats as small as 25ft, KVH's revolutionary ultra-compact 40cm antenna gives crystal-clear reception and coverage comparable to the larger satellite TV antennas. Everything you need comes in one single box - antenna, receiver, RF remote, all ready to connect to your boat's 12V power supply and TV.



KEY FEATURES

- Advanced, super-efficient 14.5in antenna
- Great offshore coverage (100-200 miles)
- Fast, powerful, ultra-quiet motors
- Fully automatic satellite acquisition
- Supports multiple receiver/TV installations
- Single LNB - simple single cable installation
- Voltage 9-16V DC, power consumption 50W
- Weighs only 8.6kg
- Height 45cm, diameter 40cm

SUPPLIED WITH

Compact dome, Junction box, Antenna cable (15m). Requires a digibox or satellite decoder (eg Sky box)

ORDER CODE - CALL FOR CUSTOM QUOTE

KVH TRACPHONE V7

Broadband Internet Access

If you're looking for the broadband internet and email access speeds of the TracPhone FB250 and FB500 but don't require standard voice telephone service, the data-only TracPhone V7 mini-VSAT system is the perfect solution, offering high-quality and consistent data connections, as well as crystal clear multiple Voice over IP (VoIP) telephone lines and reasonable service costs.



KEY FEATURES

- Seamless regional roaming with spread spectrum communications technology
- Ideal for heavy data use
- Rugged 24in antenna - 85% smaller, 75% lighter than standard VSAT antennas
- Onboard networking via an integrated WiFi and Ethernet hub
- Up to 512Kbps for ship-to-shore transmissions
- Up to 2Mbps for shore-to-ship downloads
- Dynamic, gyro-stabilised tracking and military-grade modem for outstanding performance
- Choice of always-on, fixed price or per-megabyte subscription plans and easy 1-call activation

ORDER CODES - CALL FOR CUSTOM QUOTE

KVH TRACVISION M5, M7 & M9

HDTV Satellite TV Systems

Enjoy High-Definition programming from any leading provider with automatic satellite switching directly from your remote control!



KEY FEATURES

- **Tracvision M5** - 45cm system ideal for 40-60ft boats, weight 13.6Kg, power consumption 50W
- **Tracvision M7** - 60cm system ideal for 60-80ft boats, weight 25Kg, power consumption 55W
- **Tracvision M9** - 82cm system with integral Gyro/GPS and Remote Service Modem ideal for 80ft+ boats, weight 38.5Kg, power consumption 120W
- RingFire technology gives 30% greater reception and range than any other comparably sized system
- Unsurpassed High-Performance DVB@ tracking and superior offshore performance
- M5 & M7 - optional GyroTrac gyrocompass upgrade
- Versatile Master Control Panel for trouble-free set up, easy system monitoring, satellite configuring and easy switching between satellite TV services
- Supports multiple TVs and receivers

SUPPLIED WITH

Antenna dome, Tri-Sat Controller, Remote Service Modem (M7/M9 only). Requires a digibox or satellite decoder (eg Sky box)

ORDER CODES - CALL FOR CUSTOM QUOTE

We accept most major credit and debit cards



Entertainment, Radar Enhancer

MB QUART WR1

Marine CD Head Unit

This striking AM/FM/CD player features a CD changer control function and is iPod ready with full text display to allow you to control their iPod within the range of the optional remote control. This practical product is moisture resistant and designed to withstand UV exposure and extreme heat conditions.



KEY FEATURES

- AM/FM tuner with 12 AM/18 FM presets
- SIRIUS Satellite Radio and iPod capabilities
- 40 watts x 4.5
- Preset EQ settings
- 2 RCA pre-outs
- iPod control and front panel 3.5mm port for iPod or other portable MP3 players
- Anti-shock CD buffer, J1171 marine ignition protection, moisture resistant
- Subwoofer/CD changer control

ORDER CODE - ZMBQ25-01-003

MB QUART WRC-S1 & S2

Secondary Control Units

Compatible with all current MB Quart nautic head units, these control units feature a large, easy to read backlit display and allows you to remotely control your system and iPod. Includes 6m cable.



KEY FEATURES

- Splashproof to IPX7 standard
- Designed to withstand salt and UV exposure

ORDER CODE S1 (ROUND) - ZMBQ25-01-008

ORDER CODE S2 (SQUARE) - ZMBQ25-01-009

MB QUART WM1

Marine CD/DVD Head Unit

This stylish unit plays multi-region DVD, DVD-R/RW, CD, CD-R/RW, has an easy-to-read full text display and includes waterproof credit card remote. The video out also allows you to view iPod and satellite radio displays on your TV.



KEY FEATURES

- AM/FM tuner with 12 AM/18 FM presets
- SIRIUS Satellite Radio and iPod control
- USB input plays MP3 and WMA formats
- 50 watts x 4
- 5 preset EQ settings
- 3 RCA pre-outs
- Subwoofer/CD changer control
- IPX5 construction, anti-shock CD buffer, J1171 marine ignition protection, salt/UV resistant
- Also available as a CD only version (CD, CD-R/RW)

ORDER CODE - ZMBQ25-01-001

MB QUART IPOD DOCK

Marine CD Head Unit

Control your iPod from your MB Quart system - works with iPod Classic, Nano, Touch and iPhone, connects to any cable with 30-pin iPod dock connector. Dash or surface mounts for horizontal or vertical installation.



KEY FEATURES

- Interchangeable adaptors and inserts create perfect, single iPod dock
- Black bezel (without MB Quart Logo) and Chrome bezel (with MB Quart Logo) versions available

ORDER CODE - ZMBQ26-08-001

MB QUART SPEAKERS

Marine Midrange Loudspeakers

A range of high quality marine loudspeakers designed to withstand salt and UV exposure with corrosion resistant connectors and sealed solder joints. Titanium tweeters, 4 ohm impedance, 3-year warranty

NKE116 KEY FEATURES

- 6.5in with 1in tweeter
- 60W RMS, 130W peak
- 35Hz to 32,000kHz frequency response
- 4000Hz tweeter crossover



NKF116 KEY FEATURES

- 6.5in with 3/4in tweeter
- 50W RMS, 100W peak
- 65Hz to 25,000kHz frequency response
- 4000Hz tweeter crossover



NKF692 KEY FEATURES

- 6 x 9in with 1in tweeter
- 60W RMS, 130W peak
- 50Hz to 25,000kHz frequency response
- 3900Hz tweeter crossover



ORDER CODE NKE116 - ZMBQ25-02-001

ORDER CODE NKF116 - CALL FOR DETAILS

ORDER CODE NKF692 - ZMBQ25-02-011

MB QUART NWF254

10in Marine Subwoofer

- 100W RMS, 200W peak
- 30Hz to 300Hz frequency response
- 4 ohm impedance
- Sensitivity: 86 dB
- Polypropylene cone
- Nautic crossover with special protective sealing lacquer
- Gold-plated terminals and sealed solder joints



ORDER CODE - CALL FOR DETAILS

SEA-ME

Active Radar Target Enhancer

Increase the probability that your boat will be seen on ships' radar with this affordable active device. Unlike traditional passive radar reflectors which merely attempt to create a larger radar echo, the Sea-me Radar Target Enhancer is an active system which receives a radar signal, amplifies it and re-transmits it. This ensures a stronger return signal and a more even strength around the full 360° azimuth.

KEY FEATURES

- Creates a boosted radar image equivalent to an object of 63sq m max (34sq m average)
- Up to 6 times the performance of standard passive radar reflectors
- Performance is less affected by heel than standard passive radar reflectors
- Active system emits a stronger signal than it receives
- Operates at X Band (9.32-9.5GHz)
- Indicates when vessel is struck by radar pulse
- Instantly available at the flick of a switch
- Small, light (410g) and easy to install
- Can be fitted using a standard 14TPI antenna mount
- Low power consumption (60mA idle, 260mA transmitting)
- Suitable for sailing yachts, motor cruisers and RIBs



SUPPLIED WITH

Antenna, 24m cable, control box

OUR VERDICT

A very effective solution to a major safety concern for small boat owners.

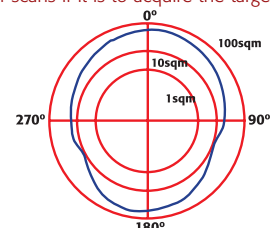
ORDER CODE - ZSEA500.010

Tech info

Why Fit an Active Radar Target Enhancer?

At night, the range of the masthead light of a sailing yacht of less than 20m is only 3nm and of a sailing yacht of less than 12m only 2nm - a ship making 20kts will cover 3nm in only 9 mins. As they get bigger, travel faster and have lower manning on the bridge, the risk of collision or a close encounter increases. Therefore it's vital that small craft return a strong radar signal if they are to be seen in plenty of time for avoiding action to be taken by ships.

Consistency is also important since most ships today are fitted with ARPA (Automatic Radar Plotting Aid) which needs to obtain a return of 50% of scans if it is to acquire the target



Performance of the radar cross-section area of Sea-me

Turn to the back page for pricing and ordering info NOW!

McMURDO SMARTFIND E5

406MHz EPIRB

The Smartfind E5 is a new ultra-compact 406MHz EPIRB. Once removed from its Carrysafes mounting bracket, the unit can be activated either manually or automatically by immersion in water. A hydrostatic release casing is also available.

Smartfind EPIRBs are programmed with a unique serial number which must be registered with the national authorities. Where permitted by these authorities, beacons can be re-programmed with the vessel's MMSI or Radio Call Sign.

KEY FEATURES

- Stylish and compact
- GMDSS compliant
- 121.5MHz homing transmitter
- Non hazardous battery for safe and easy transportation
- High brightness LED flashing locator lights
- Comprehensive diagnostic and self-test facilities
- 6 year battery life

ORDER CODE E5 - ZMCM185833

SEEN IT
FOR LESS?
WE'LL WIN THE
BATTERY ON
PRICE!



McMURDO SMARTFIND G5

406MHz GPS EPIRB

A new ultra-compact 406MHz EPIRB with an inbuilt 12 channel GPS giving location accuracy of less than 3m. Supplied with a Carrysafes mounting bracket, the unit can be activated manually or automatically by immersion in water. A hydrostatic release casing is also available.

Smartfind EPIRBs are programmed with a unique serial number which must be registered with the national authorities. Where permitted by these authorities, beacons can be re-programmed with the vessel's MMSI or Radio Call Sign.

KEY FEATURES

- Inbuilt 12 channel GPS
- GMDSS compliant
- 121.5MHz homing transmitter
- Non hazardous battery for safe and easy transportation
- High brightness LED flashing locator lights
- Comprehensive diagnostic and self-test facilities
- 6 year battery life

ORDER CODE G5 - ZMCM185835

EDITOR'S
CHOICE



McMURDO FASTFIND MAX+

406MHz GPS PLB

Handheld PLB with integral GPS featuring the same advanced technology found in the award winning Precision EPIRB. Designed using miniature components to fit into an ergonomically styled compact casing, it employs a simple 3 stage manual operation and features user replaceable battery packs. It is ideal for alerting the rescue services of an emergency during maritime, light aircraft and outdoor activities (where licensing allows).

KEY FEATURES

- Compact and lightweight
- 406MHz transmitter, 121.5MHz homing frequency
- Integral GPS receiver
- Battery life 5 years, transmission life 48 hrs



McMURDO FASTFIND MAX

406MHz PLB

All the features of the Fastfind Plus, but without the internal GPS. Alert signal to rescue services within 90 mins, typical positional accuracy to within 3nm

BOTH MODELS SUPPLIED WITH

Battery pack, case and lanyard

ORDER CODE FASTFIND MAX+ - ZMCM050.013

ORDER CODE FASTFIND MAX - ZMCM050.014

EXPERT
ADVICE

McMURDO S4 RESCUE

SART

A 9GHz X-Band Radar transceiver that has been designed for assisting air/sea ship or survival craft rescue operations in accordance with IMO GMDSS requirements. Once activated it will operate for over 96hrs in standby mode.

KEY FEATURES

- Ship or survival craft applications
- 5 year long life replaceable battery pack
- Audio/visual alarm
- Inbuilt test facility
- Internal/external mounting options

SUPPLIED WITH

Mounting bracket, lithium battery

ORDER CODE - ZMCM86-300-01A



ICS NAV6PLUS

Dual Channel Navtex Receiver

The large and easy to read backlit LCD display concentrates Navtex and NMEA data from your GPS or instrument system into one central point. An electronic logbook is updated at regular intervals and can be viewed on-screen or printed out via an optional printer.

KEY FEATURES

- Simultaneous dual channel Navtex receiver
- Sort messages by receipt time/date, station or category
- RS232 data output
- 12 volt operation

SUPPLIED WITH

Dual channel Navtex sensor with 10m cable

ALSO AVAILABLE

- **NAV6DUAL** - All the features of the NAV6PLUS, but without the GPS or NMEA repeater option
- **NAV6APLUS** - As the NAV6PLUS, but can be used with insulated shrouds, backstays or multifunction antennas instead of a dedicated Navtex antenna

ORDER CODE NAV6PLUS - ZICS916.01

ORDER CODE NAV6DUAL - ZICS916.00

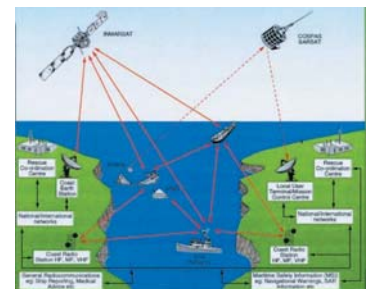
ORDER CODE NAV6APLUS - ZICS920.00



Find out more...

What is an EPIRB?

An Emergency Position Indicating Radio Beacon (EPIRB) is used to alert the Search And Rescue services in the event of an emergency. It transmits a coded message on the 406MHz distress frequency, which is detected by the COSPAS-SARSAT satellites. Emergency alerts are relayed to the closest Local User Terminal, which then forwards the information to the Mission Control Centre where the message is decoded. The distress details and vessel details (taken from the registration details) are then passed to the appropriate Rescue Coordination Centre who co-ordinate the relevant Search And Rescue authorities.



What's the difference between an EPIRB and a PLB?

Once the Search And Rescue service are in the area, they need to pinpoint your position directly. McMurdo's Rescue and Precision EPIRBs contain a 121.5MHz location transmitter for this purpose.

That's fine if you're with the EPIRB, but if you're in the water or have become separated from the vessel, you'll still want the rescue services to find you quickly and easily. A Personal Locator Beacon (PLB) transmits on the same 121.5MHz frequency, but is designed to be carried on your person - many quality foul weather jackets have a pocket on the sleeve for this purpose.

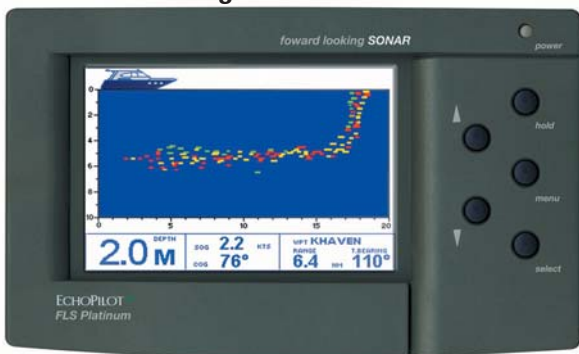
And what's a SART?

Generally deployed in the liferaft on a long pole, a Search And Rescue Transponder (SART) performs a similar function to a PLB, the difference being that a SART sends out a 9GHz signal which is detected by a ship's radar, appearing as a dotted line pointing to your position.

We accept most major credit and debit cards



ECHAPILOT PLATINUM FLS Colour Forward Looking Sonar



A colour FLS with the best range and performance yet. Developed with all the expertise gathered by Echopilot over 13 years of manufacturing Forward Looking Sonar. With greater resolution than previous models, the large transfective colour LCD can be seen in the brightest sunlight. The use of colour enables enhanced seabed interpretation - the colour of the target depends on its hardness and the strength of echo that it returns. The Platinum is NMEA compatible and can display GPS data. It is designed for flush mounting but there is an optional bracket for wheelhouse use.

KEY FEATURES

- Large colour sunlight-viewable display
- 200m forward range
- Optional wireless link between transducer and instrument for ease of installation
- Optional computer output for interfacing with on board computers

SUPPLIED WITH

200kHz professional transducer with 12m cable

ORDER CODE - ZECHPLSYS

ECHAPILOT BRONZE FLS Forward Looking Sonar

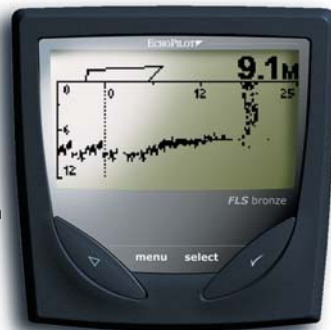
If you're stuck for space but still want to fit an FLS, the Echopilot Bronze is ideal, contained in a standard 110x110mm instrument-sized case with the latest transfective LCD technology.

KEY FEATURES

- Simple two key operation
- Forward range 100m, depth range 50m
- Forward alarm
- Optional professional transducer for long keel boats over 35ft

SUPPLIED WITH

200kHz standard or professional transducer with 12m cable



ORDER CODE STANDARD - ZECH133.015
ORDER CODE PROFESSIONAL - ZECH133.016

ECHAPILOT PLATINUM VIDEO FLS Black Box Colour Forward Looking Sonar



Turn your combi display into a colour FLS repeater! Black box colour forward sonar which communicates via video signal with third party combi displays with a composite or S-Video input. Available in two versions - a video interface box to connect an FLS Platinum to a combi display, or a complete black box solution comprising transducer, skin fitting, cables, electronics box and control keypad which can be connected to any colour display or monitor with composite or S-Video input (display not supplied)

KEY FEATURES

- Compatible with Raymarine E series, Garmin 4000/5000 series, Furuno 10in NavNet, Simrad CX and Navman 8000 series and others - call for advice
- 200m forward range
- Improved performance
- Forward Alarm
- Digital Depth
- Speed Option
- Built in GPS Repeater
- NMEA Compatible



ORDER CODE PLATINUM ENGINE - ZECHPLENG
ORDER CODE PLATINUM VIDEO INTERFACE KIT - ZECHPLVK

ECHAPILOT SILVER2 & GOLD2 FLS Forward Looking Sonar

Real time forward looking 200kHz sonar with enhanced processing software for improved performance. See underwater obstructions ahead of the vessel rather than just the depth below. The range is 20-150m ahead, 10-75m down. The FLS Gold adds a wider screen, NMEA in/out and a repeater option to the features of the Silver FLS.

KEY FEATURES

- Manual or Autogain
- History display of sea bed
- Optional log transducer
- Gold - Display GPS info via NMEA - position, BTW, DTW, XTE and waypoint name
- Gold - Output log and depth info via NMEA

SUPPLIED WITH

200kHz standard or professional transducer with 12m cable

ORDER CODE SILVER STANDARD - ZECH133.010
ORDER CODE SILVER PROFESSIONAL - ZECH133.011
ORDER CODE GOLD STANDARD - ZECH133.012
ORDER CODE GOLD PROFESSIONAL - ZECH133.013



ECHAPILOT WRECK FINDER Underwater Wreck Locator

Based on the FLS Gold, the Wreck Finder can locate wrecks and other manmade objects on the sea bed. It can be used as a 2D FLS or a 3D Sidescan, with the wreck finding facility working in both modes. Interface with a GPS to store the position of the last 10 wrecks.

KEY FEATURES

- Forward range 150m, depth 75m
- Over 11,000sq metres of seabed can be displayed
- Realtime 3D image of seabed
- Optional switch box for second transducer

SUPPLIED WITH

200kHz professional transducer with 12m cable



ORDER CODE - ZECH133.018



Find out more...

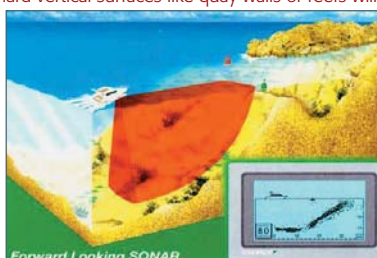
Real Time Forward Looking Technology Explained

Real Time means that the FLS doesn't gradually build up a picture, instead it scans the whole forward view and updates the screen several times a second. An obstruction ahead of the boat will be shown immediately.

The FLS displays a 2D profile of the seabed below and 3-5 times that depth ahead of the vessel on a flat muddy bottom. This increases to 8 or 9 times if the seabed shoals upward and more than this for a large target. Rocky bottoms give especially strong reflections and hard vertical surfaces like quay walls or reefs will often be seen at 150m or more.

In the vertical plane the FLS scans through 90° from straight ahead to straight down.

The FLS is not designed to be a fishfinder, it is a collision avoidance device. In reality it does pick up larger fish and sometimes shoals of smaller fish.



Forward Looking SONAR

Turn to the back page for pricing and ordering info NOW!

NAVIONICS

Electronic Cartography

Navionics offers three main product lines: the popular and established Gold, the multi-award winning Platinum and - new for 2008 - Platinum Plus. All are based on Navionics exclusive vectorised fully Seamless technology, providing clearly legible charts without clutter, holes or discontinuities. Gold charts are now available in the new XL9-size giving huge coverage areas, while Platinum and Platinum Plus are available in the great value XL3-size. Both coverage sizes offer the same outstanding detail of the smaller sizes of the past, at up to 16 zoom levels. All recent plotters compatible with Navionics charts accept standard and expandable cartridge formats, such as Compact Flash or Secure Digital. Visit the Navionics website at www.navionics.com to access the list of compatible plotters with corresponding product line and media.

NAVIONICS PLATINUM & PLATINUM PLUS

Electronic Cartography

Navionics Platinum is the first "Multi-dimensional" electronic chart system for marine chartplotters. It offers charts with enhanced features such as 3-D bathymetrics, cruising guides, satellite and photographic images and more - all integrated and geo-referenced on a single plug & play cartridge that could not be simpler to use.

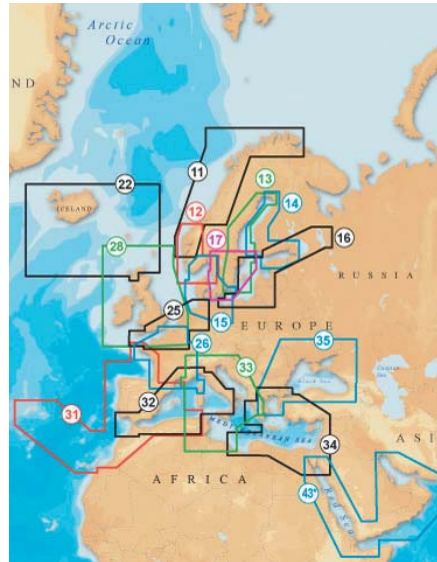
A major enhancement to the award winning Platinum cartography, Platinum Plus combines extremely high-resolution satellite and aerial photography overlays, stunning XGA panoramic pictures, improved 3D bathymetric depth elevations, and complete pilot books with Navionics' renowned accuracy and detail.

KEY FEATURES PLATINUM

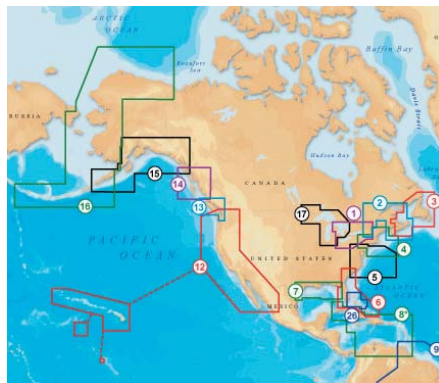
- 3-D View with optional photo overlay
- Satellite photo overlay over land
- Panoramic pictures - improve your approach with 15,000 photographs of harbours and marinas
- Port services & Points of interest information
- Dynamic Tide & Currents - Tidal heights, flow speed and direction with graphic indicators
- Pilot Books - comprehensive and detailed pilot book information

KEY FEATURES PLATINUM PLUS

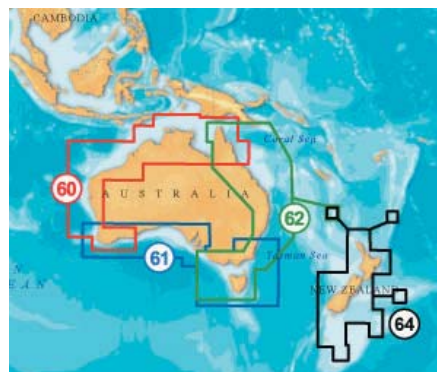
- High-definition, geo-referenced satellite and high aerial photo overlays images at up to 25cm per pixel
- Sharp panoramic pictures of marinas, ports, passes and other locations in XGA (1024x768) resolution
- High definition depth elevations & seabed rendering



Area	Plat	Plat+
NORWAY NORTH WEST	11P	11P+
NORWAY SOUTH WEST	12P	12P+
SWEDEN EAST COAST	13P	13P+
FINLAND	14P	14P+
OSLO TO DENMARK	15P	15P+
SOUTH BALTIC	16P	16P+
SWEDEN SOUTH	17P	17P+
ICELAND	22P	25P+
UK SOUTH/HAMBURG	25P	26P+
FRANCE	26P	28P+
UK & IRELAND	28P	31P+
IBERIA	31P	32P+
WESTERN MEDITERRANEAN	32P	33P+
CENTRAL MEDITERRANEAN	33P	34P+
EASTERN MEDITERRANEAN	34P	35P
BLACK SEA	35P	43P
RED SEA & ARABIAN GULF	43P	



Area	Plat	Plat+
1. EAST GREAT LAKES	901P	901P+
2. NOVA SCOTIA, ST LAWRENCE R.	902P	
3. NOVA SCOTIA, NEWFOUNDLAND	903P	
4. US NORTH EAST & CANYONS	904P	904P+
5. US MID ATLANTIC & CANYONS	905P	905P+
6. US SOUTH EAST & BAHAMAS	906P	906P+
7. GULF OF MEXICO	907P	907P+
8. CARIBBEAN	908-3D	
12. US WEST COAST & HAWAII	912P	912P+
13. VANCOUVER ISLAND	913P	
14. NORTH BRITISH COLUMBIA	914P	
15. SOUTH ALASKA	915P	
16. NW ALASKA & ALEUTIAN IS.	916P	
17. WEST GREAT LAKES	900P	900P+
26. BAHAMAS SPECIAL EDITION	926P	



Area	Plat
AUSTRALIA NORTH & NORTH WEST	60P
AUSTRALIA SOUTH	61P
AUSTRALIA EAST & NORTH	62P
NEW ZEALAND	64P



3D view with satellite picture overlay



Panoramic pictures



Satellite photo overlay



Improved 3D bathymetric views



High definition satellite & high aerial photography

We accept most major credit and debit cards



Electronic Cartography

NAVIONICS XL9 GOLD

Electronic Cartography

Gold charts bring electronic cartography a step closer to the official paper charts. Bathymetries are easily distinguishable thanks to the different colour shadings, light sectors of lighthouses and real forms and colours of buoys. The boater can select the contour colours to differentiate and identify shallow and hazardous areas as well as difficult-to-anchor, deeper water.

KEY FEATURES

- Now in XL9 format - even greater chart coverage!
- Familiar appearance of a paper chart
- Highly detailed charts, huge cruising area
- Intelligent Clarity with IC™
- Navaid's feature Xplain™ clear descriptions
- Extended object oriented technology
- Shaded depth contours and spot soundings
- Animated tide and current database shows tidal heights and speeds
- Port plans and port service guides
- New and updated T&Cs data
- A comprehensive database of wrecks for fishermen
- Exclusive coverage of the Shannon-Eme Waterway on 28XG

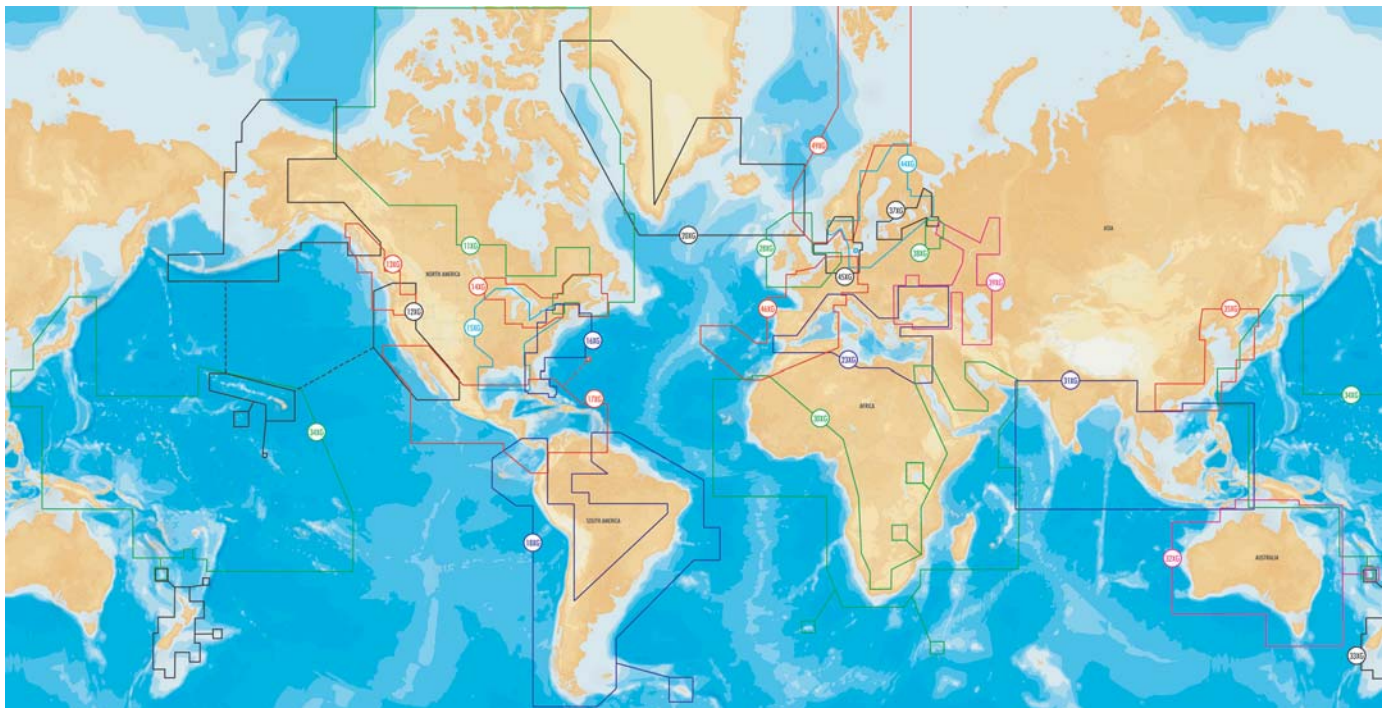
Area

NORTH & EAST CANADA	11XG
USA-WEST & ALASKA	12XG
BRITISH COLUMBIA	13XG
GREAT LAKES & MARITIMES.....	14XG
USA-CENTRAL	15XG
USA-EAST	16XG
MID AMER & CARIBBEAN.....	17XG
SOUTH AMERICA	18XG
GREENLAND & ICELAND	20XG
MEDITERRANEAN & BLACK SEA	23XG
UK, IRELAND & NETHERLANDS.....	28XG
AFRICA & MIDDLE EAST	30XG
BALTIC SEA, UPPER VOLGA RIVER.....	37XG

Ref.

Area

MOSCOW AREA38XG
LOWER VOLGA, BLACK & CASPIAN SEA39XG
BALTIC, FINLAND, SWEDEN, NORWAY SOUTH44XG
SKAGERRAK & KATTEGAT45XG
FRANCE, IBERIA, NETHERLANDS, EU INLAND WATERS46XG
NORWAY49XG
INDIAN OCEAN & SOUTH CHINA SEA31XG
AUSTRALIA32XG
NEW ZEALAND33XG
PACIFIC ISLANDS & JAPAN34XG
CHINA & KOREA35XG



NAVIONICS NAVPLANNER

PC-Based Chart Viewing System

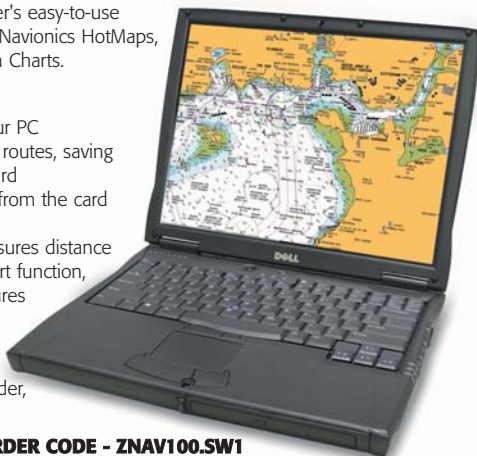
An easy-to-use software package that allows you to plan your navigation on a PC at home and transfer it to your chartplotter on your chart card. Plan your route on PC using NavPlanner's easy-to-use navigational tools with Navionics HotMaps, Silver, Gold or Platinum Charts.

KEY FEATURES

- View the chart on your PC
- Load, create and edit routes, saving them to your chart card
- Transfer data directly from the card to the plotter
- 16 zoom levels, measures distance and bearing, go-to-port function, and many other features

SUPPLIED WITH

Navionics all-purpose
23-in-1 Multi Card Reader,
Worldwide chart



ORDER CODE - ZNAV100.SW1

NAVIONICS MOBILE

Mobile Chart Viewing System

Navionics Mobile turns your smart phone into a marine chartplotter that you can take with you everywhere and take advantage of the clarity and detail of the most renowned marine cartography. Navionics Mobile works on most popular smart phones with Gold XL9, HotMaps Premium and Discover Charts.

KEY FEATURES

- See your chart position on screen
- Scroll and zoom charts
- Query objects, find your favourite marina or point of interest
- Charts stored in phone memory - no loss of service when out of cell range
- Download the reader free from the iTunes App Store - includes world base map and sample charts

**NEW FOR
2009**

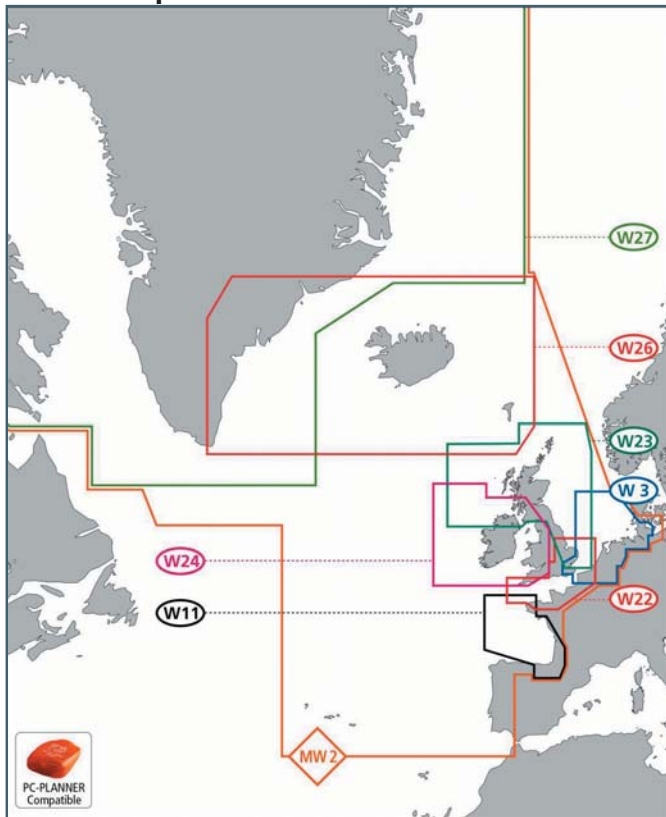


Turn to the back page for pricing and ordering info NOW!

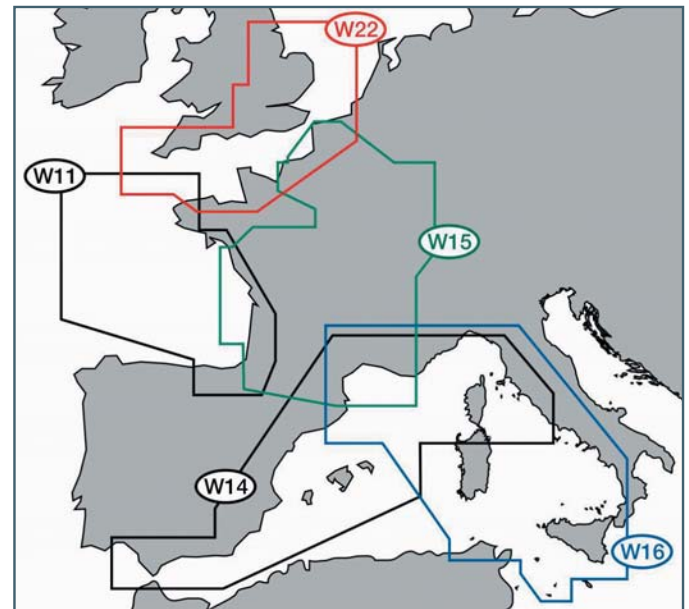
Electronic Cartography

C-MAP MAX WIDES & MEGAWIDES

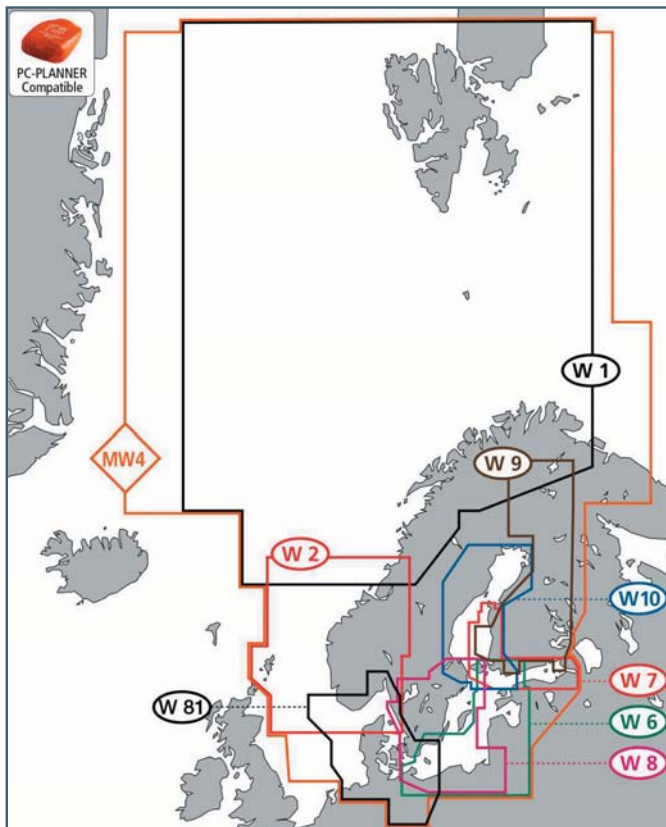
Atlantic European Coasts



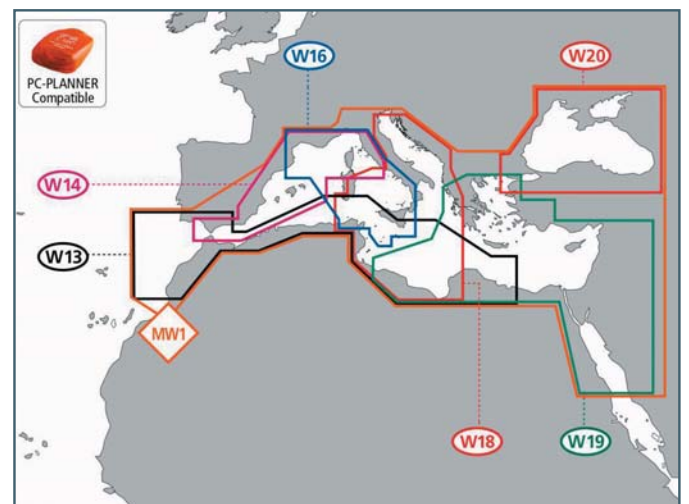
West European Coasts



North & Baltic Seas



Mediterranean & Black Sea



Please note that this is just a small selection of the most popular cruising areas covered by C-Map. If you are looking for a region not shown here, please call us for more details or check our website.

Turn to the back page for pricing and ordering info NOW!

INTELLIAN SAT TV

Satellite TV Antennas

The name on the antenna may be new to you, but the advanced technology inside has long delivered the sharpest, most reliable satellite television reception on the seven seas. In fact, Intellian's proven satellite television antenna systems can be found today on some of the finest yachts and vessels in more than 40 countries around the world.

Now Intellian Technologies brings boaters a full line of high-performance satellite systems for a range of power and sailboats worldwide. Exclusive Intellian satellite TV antenna system features include patent-pending Wide Range Search (WRS) algorithm for faster signal acquisition, Advanced Dynamic Beam Tilting (DBT) for optimum signal stability in heavy seas, an innovative built-in GPS on Intellian i3, i4, i6 and i9 series which automatically uploads data and Auto Skew Angle Control System (i4P version only). The complete system includes Antenna, Radome and Antenna Control Unit (ACU) for simple installation and easy control.

INTELLIAN i1

11in Satellite TV Antenna System

The Intellian i1 system has the world's smallest in-motion marine satellite TV antenna ever, perfect for small boats. It brings the boaters an affordable, yet luxurious entertainment system to access their favourite satellite TV channels freely whether in port or cruising coastal waters. Wide Range Search (WRS) and Dynamic Beam Tilting (DBT) technologies make fragile motion sensors unnecessary with the most precise tracking capability and superior satellite signal reception at high speed or in rough sea conditions. The more up-to-date design of the i1 has an intelligent, built-in TriSat module in its control unit that offers boaters satellite TV broadcasts automatically without any extra conversion boxes and wiring.

KEY FEATURES

- High quality antenna with 2-axis step motor
- Fully automated satellite search
- LHCP/RHCP or Horizontal/Vertical polarisation
- Superior dynamic tracking
- Fastest Wide Range Search (WRS) algorithm
- DVB signal identification
- Inbuilt NMEA 0183 GPS interface
- Easy satellite information change and update
- Easy antenna status check and automatic diagnosis
- Easy antenna control using PC interface
- Reliable power supply to the antenna
- Embedded TriSat function
- Easy installation - single cable from the ACU to the antenna



ORDER CODES - CALL FOR CUSTOM QUOTE

INTELLIAN i3

15in Satellite TV Antenna System

The Intellian i3 gives superior tracking performance and efficiency over systems of a similar size and is ideal for boats over 25ft whether cruising in coastal waters or offshore. The i3 offers the highest signal strength available - its innovations in Wide Range Search (WRS) and Dynamic Beam Tilting (DBT) technologies meaning there is no compromise in reception quality even in rough seas. Integrated smart HD and TriSat modules allow access to HDTV channels just like at home. Its single cable design between the antenna and the control unit means trouble-free installation and operation.

SEEN IT FOR LESS?
WE WON'T BE BEATEN ON PRICE!

KEY FEATURES

- 15in antenna with 2-axis step motor
- Fully automated satellite search
- LHCP/RHCP or Horizontal/Vertical polarisation
- DVB signal identification
- Inbuilt GPS for fast satellite acquisition
- Inbuilt NMEA 0183 GPS interface
- Easy satellite change and update
- Antenna status check and automatic diagnosis
- Easy antenna control using PC interface



ORDER CODES - CALL FOR CUSTOM QUOTE

INTELLIAN i2

13in Satellite TV Antenna System

The Intellian i2 is the world's first high-performance and compact satellite TV system with integrated HD and TriSat modules. The i2 is an absolute choice for boats as small as 25ft with its small, simple and powerful designs. WRS and DBT technologies maintain the highest signal strength available for crystal-clear TV reception even in rough conditions. The new intelligent Antenna Control Unit (ACU) offers a complete turnkey solution designed for simplicity and ease. To enjoy as many as three different satellites, the ACU supports automatic satellite switching right from your remote control just like home.

KEY FEATURES

- High quality antenna with 2-axis step motor
- Fully automated satellite search
- LHCP/RHCP or Horizontal/Vertical polarisation
- Antenna weighs less than 10lbs (4.5kg)
- DVB signal identification
- Inbuilt GPS system for fast satellite acquisition
- Inbuilt NMEA 0183 GPS interface
- Easy satellite information change and update
- Antenna status check and automatic diagnosis
- Easy antenna control using PC interface
- Built-in MIM (Multi-satellite Interface Module)
- Up to six receivers can be connected to ACU directly
- Every receiver connected to ACU can be a master receiver which can change the satellite freely by TV remote control



ORDER CODES - CALL FOR CUSTOM QUOTE

INTELLIAN i4

18in Satellite TV Antenna System

With its rugged, reliable and durable design, the Intellian i4 provides outstanding performance while the vessels cruising at high speed or in rough sea conditions. The i4 offers all the features of the i3 system and is ideal for boats over 50ft.

EXPERT ADVICE



ORDER CODES - CALL FOR CUSTOM QUOTE

We accept most major credit and debit cards



Equipment Mounting Pods

MARINEPOD

Mounting Solutions

The helm is where you need the chartplotter or radar for close quarters navigation but physically mounting it in the cockpit can be challenging. The new MarinePod system is a range of waterproof electronic equipment housings designed to fit both Whitlock and Edson's steering gear, both 9.5in and 12in wide rail systems.

MarinePod's unique design allows any pod to fit either system with a template supplied to allow easy drilling for the correct fixing points. MarinePod is manufactured in the UK utilising a highly UV resistant, acrylic capped ABS plastic and specialist seal system. For a small additional cost, we can factory pre-cut the panel to suit your equipment from either a template or CAD file – there are details on file for most popular items such as Garmin's 4000/5000 Series and Raymarine's ST60+, E and C Series. The pods can also be moulded in custom colours including silver, black carbon and white. The pods fit to the binnacle rail with a series of heavy duty stainless steel clamps included with the system as standard. The system can be adapted to fit 7/8in, 1in and 1.25in diameter rail systems or you can custom drill the reinforced rear case to suit a specific installation.

KEY FEATURES

- Mount instruments, radar, chartplotters and more at the helm
- Option to factory pre-cut pods to fit most popular makes and products
- Custom colour moulding option
- UV resistant mouldings
- Specialist seal system protects the back of the equipment from water ingress

MARINEPOD MP1

Mounting Pod

The MP1 is a large 420x330mm pod suitable for bigger combi displays and chart plotters with a display size of over 10in. It can also be used to mount several smaller displays together such as instruments, autopilot control etc.

KEY FEATURES

- Designed for large multifunction displays such as the Raymarine C120/E120, Furuno Navnet 2/3, Garmin 4010, 4012 or 5012 series displays
- Also can be used with a smaller 8in display plus additional instruments
- Maximum useable face area 420x330mm
- Maximum depth 160mm

SUPPLIED WITH

4 stainless steel clamp brackets, fixings

ORDER CODE - ZMARMP1



MARINEPOD MP2

Mounting Pod

The MP2 has a 370x290mm face making it ideal for medium-sized chartplotters, radars and combi displays with 7 - 8in displays. It is the same width as the MP3 instrument pod, so both can be mounted together as part of a single pedestal installation.

KEY FEATURES

- Designed for medium size multifunction displays such as the Raymarine C70/80/E80, Furuno Navnet 2 7in displays, Garmin 4008/5008, Northstar M84 etc
- Width matches MP3
- Maximum useable face area 370x290mm
- Maximum depth 160mm

SUPPLIED WITH

4 stainless steel clamp brackets, fixings

ORDER CODE - ZMARMP2



MARINEPOD MP3

Instrument Pod

The MP3 instrument pod is designed to fit three standard 110x110mm displays, but is also suitable for engine controls, wider multi-function instrument displays and autopilot control heads (eg Raymarine ST7002+ etc).

KEY FEATURES

- Designed for mounting three 110x110mm format instruments such as those from Raymarine, Nasa, Tacktick, Furuno, Navman, Simrad etc
- Can also be used for engine instruments and controls
- Maximum useable face area 370x140mm
- Maximum depth 60mm

SUPPLIED WITH

2 stainless steel clamp brackets, fixings

ORDER CODE - ZMARMP3



MARINEPOD MP5-A

Single Instrument Pod

The MP5-A is designed for mounting a single 110x110mm instrument. The rear of the case has an extrusion with flat horizontal mounting point which can be used to attach the pod to a bulkhead or other fixing point. The MP5-A is supplied as standard with a stainless steel mounting clamp which is suitable for attaching to a pedestal guard rail.

KEY FEATURES

- Maximum useable face area 150x155mm
- Maximum depth 75mm
- Also available without the mounting clamp (MP5)

SUPPLIED WITH

Stainless steel mounting clamp, fixings

ORDER CODE MP5-A - ZMARMP5-A

ORDER CODE MP5 (NO MOUNTING CLAMP) - ZMARMP5



Turn to the back page for pricing and ordering info NOW!

DIGITALYACHT CF 'X' SERIES

Compact 12v Marine PCs

The Digital Yacht CF60x and CF50x are both ultra-compact PCs ideal for onboard use where space is limited, measuring just 185 x 60 x 255mm, small enough to fit on any boat. The CF 'X' series boast low power consumption - typically less than 2A and this is drawn directly from your boat's 12V DC battery bank so that a complex and power hungry DC-AC inverter is not required. Passively cooled through its patented and sturdy heat-sink case, the CF 'X' doesn't need an internal fan, making it totally reliable in even the most hostile marine environment.

Designed to work with Windows operating systems, the CF 'X' PC houses a powerful Intel M 1.86GHz processor and 1GB RAM, ideal for onboard electronic charting applications, navigation and communication. An additional on board Intel graphics processor enables a quick redraw of electronic charts.

The CF 'X' PC features a combination DVD and CD-RW drive. Interfaces include a traditional VGA output for connection to an LCD monitor, an RS232 serial port for NMEA interfacing, 3 USB, LAN and Firewire connections which should amply serve most onboard connectivity requirements.

Taking full advantage of the latest NAND flash technology (re-writable solid memory), the CF60x has a Solid State hard drive with no moving parts. Super rugged and so offering unbeatable reliability, the CF60x is one product capable of offering navigation, communication and entertainment functions at an incredibly attractive price.



KEY FEATURES

- CF50x - Compact 12v CF 'X' PC with 120GB rugged drive
- CF60x - 2GB Solid State (no moving parts) NAND flash hard drive, larger options available
- Measures just 185 x 60 x 255mm
- 12v DC operation with low power consumption (<2A) - no inverter required
- Designed for the fluctuating voltages encountered on board
- Full range of connectivity options, RS232/NMEA serial, 3 USB, Firewire/IEEE 1394, 10/100 MB LAN Ethernet port, VGA monitor port and audio in-out
- 1GB DDR2 RAM
- CD RW/DVD drive
- Built in Intel graphics for fast electronic charting presentation
- Includes Windows XP Home operating system
- Windows XP Pro is an option
- 2 year warranty

SUPPLIED WITH

CPU only - monitor, keyboard and mouse must be ordered separately. WIFI, software and accessories also available

ORDER CODE CF50x - ZDIGCF50X
ORDER CODE CF60x - ZDIGCF60X

DIGITALYACHT CF80

12v Marine PC

Compact Marine PC with powerful Intel dual core processor measuring just 280 x 190 x 170mm. Designed for the fluctuating voltages encountered on board, the CF80 features 12v DC operation with low power consumption (3.5 - 4A) - no inverter required.

KEY FEATURES

- 5 serial / NMEA port pre-installed and configured for GPS, AIS autopilot and instrument connections
- Full range of connectivity options including USB, Firewire/IEEE 1394, 10/100 GB LAN and audio in-out
- 1Gb DDR2 667MHz RAM expandable to 2Gb
- 120GB ultra rugged drive supported in anti-vibration housing
- Built in Intel graphics for fast electronic charting presentation
- Includes Windows XP Home operating system
- Windows XP Pro or Windows Vista is an option



SUPPLIED WITH

CPU only - monitor, keyboard and mouse must be ordered separately. WIFI, software and accessories also available

ORDER CODE - ZDIGCF80

DIGITALYACHT AIRO

Waterproof Colour PDA

A powerful and rugged handheld PDA using Windows Mobile 6 operating system. Built to MIL specifications for the most demanding situations, features include high res colour touchscreen and rocker-pad cursor control, quad band GSM phone (with internet and email connectivity) and 12 channel GPS.

KEY FEATURES

- Waterproof, shock resistant to 20g, drop resistant 1.25m onto concrete 26 times
- 2.8in high res 320x240 pixel touchscreen
- Intel XScale PXA270 processor 520 MHz
- 1570 mAh lithium rechargeable battery
- Dedicated programmable distress key
- mini SD slot for charting or memory expansion
- Built in Windows Mobile 6 applications such as Pocket Word, Excel, Outlook and Powerpoint

ORDER CODE - ZDIGAIRO



DIGITALYACHT PROLITE SERIES

15, 17 & 19in LCD Monitors

Compact, lightweight colour LCD monitors that complement DigitalYacht PC systems.

KEY FEATURES

- Free standing or flush mountable
- Optional adjustable mounting arm

ORDER CODE 15in - ZDIGS115

ORDER CODE 17in - ZDIGS117

ORDER CODE 19in - ZDIGS119



DIGITALYACHT WL200

On Board Wi-Fi Access System

WiFi hot spots allow you to connect to the internet and download the latest weather or chart updates, as well as make use of a mobile office. Most harbours and ports have either free or subscription based services available. Using an internal WiFi adaptor typically found on a laptop, you'll be lucky to find the signal at the end of the dock, so if you plan to access the internet whilst on board the WL200 or WL500 could be the solution for you!

KEY FEATURES

- Plug'n'play setup automatically detects WiFi points within range
- Boosts range by up to 15x with powerful 400mW output
- Data rate up to 11Mbps
- Up to 1 mile range from marina WiFi hot-spots
- Self powered from PC USB connection
- Supports 802.11b/g protocols as well as WEP & WPA encryption
- Just 630mm long - fits on standard 1 in x 14 TPI mount

SUPPLIED WITH

Software, 5m USB cable. USB cable extenders available as an option

ORDER CODE - ZDIGWL200

DIGITALYACHT WL500

On Board Wi-Fi Access System

WiFi range depends on many local factors but we've seen ranges of up to 6 miles with this low cost system! The WL500 has a compact, DC powered below deck mounted booster/modem and external hi-gain antenna.

Even if your system already has WiFi access, this can be disabled and you can take advantage of the superior range and speed this system will offer!

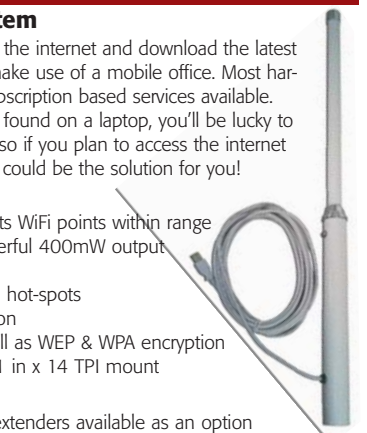
KEY FEATURES

- Data rate up to 11Mbps
- Powerful 500mW (1w erp) output (check local licensing conditions)
- Plug'n'play setup automatically detects WiFi points within range
- Supports 802.11b/g protocols as well as WEP and WPA encryption

SUPPLIED WITH

Antenna, 10m low loss coax interconnect cable and plug'n'play driver disk for use with Windows XP and Vista operating systems

ORDER CODE - ZDIGWL500



We accept most major credit and debit cards



Marine Navigation Systems

DIGITALYACHT AIT250

Class B AIS Transponder

Although there are several AIS units currently being sold in the leisure market they are all just receivers - it is normally commercial vessels that are fitted with transmitters. Thus while you can see them, they can't see you! The AIT250 is a full Class B AIS transponder which sends and receives AIS data so your position, course, speed, heading and identity are transmitted to other AIS users as well as receiving other Class A and Class B data transmissions for viewing on a compatible plotter or PC charting system, greatly improving your safety at sea. This compact unit measures just 190x175x91mm and can be interfaced with a PC or a compatible chartplotter, radar or combi display.



KEY FEATURES

- Full Class B AIS transponder compliant to IEC62287-1 and CE0168
- Built in GPS with NMEA output
- Built in dual channel receiver with NMEA/RS232 output
- Silence mode switch - turn off the transponder
- 12V DC (9.6-15v), average power consumption 4W
- Built in integrity testing for constant monitoring with LED status lights
- Optional distress function with safety related message (SRM) capability



SUPPLIED WITH

GPS antenna, VHF antenna

ORDER CODE - ZDIGAIT250

DIGITALYACHT SPL250

AIS Antenna Splitter

The SPL250 unit removes the need for a separate VHF antenna for an AIS transponder and allows a single antenna to be shared with a VHF radio. This is the only VHF antenna splitter suitable for use with two transmitting devices. Compatible with all Class B AIS transponders and AIS receivers.



KEY FEATURES

- Saves installation time and cost by using a single VHF antenna for both AIS and VHF operation
- Guarantees priority to VHF voice and DSC radio operation even if the splitter power supply fails
- Additional output for FM radio antenna connection
- LEDs indicate when VHF voice radio or AIS is transmitting or receiving

SUPPLIED WITH

RF leads for connection with AIS transponder, VHF radio and a power lead

ORDER CODE - ZDIGSPL250

DIGITALYACHT GPS105/110

12 Channel GPS Sensor

High performance active WAAS/EGNOS GPS antennas. Ideal for use with Digitalyacht PCs, these antennas can be used with any system where position input is required.

KEY FEATURES

- GPS105 with NMEA output
- GPS110 with USB connection
- Typical accuracy less than 5m

ORDER CODE GPS105 - ZDIGGPS105
ORDER CODE GPS110 - ZDIGGPS110



DIGITALYACHT TOUCH

Marine Navigation System

DigitalYacht TOUCH offers total flexibility. As a fully integrated electronic charting system, WIFI is built-in. A Class B AIS transponder is built-in, as well as navigation voice guidance! The TPX 1000 navigation processor incorporates a powerful Intel Atom processor to offer unbeatable screen redraw rates and great navigation functions with the reliability of an embedded system. It is amazingly simple to zoom in and out, create a route, mark or waypoint, just by tapping the screen! Press and hold and an intuitive menu pops up! You can customise the icons on your screen for the features and functions you use and layout the screen to suit your needs. The TOUCH system is simple, yet fast and powerful.



KEY FEATURES

- 12in or 15in screen with touch screen technology for simple, intuitive fingertip control and operation
- Keyboard and mouse included too for fast text data input
- Optional Commander joy-stick or waterproof track-pad
- C-map MAX Pro electronic charting with auto chart updating
- Over 35,000 electronic charts are stored in the TOUCH processor ready for easy unlocking as required
- TOUCH offers voice guidance - clear, spoken commands of your key navigation data such as depth, bearing, course and speed information
- 2 year warranty

SUPPLIED WITH

AIS antenna, GPS antenna. Waterproof cockpit speaker optional. Radar and sounder options too

ORDER CODE - CALL FOR DETAILS

CLEARPOINT WEATHER

Global Weather Information Service



Accurate weather information is vital for safe navigation. ClearPoint is a global weather service that compiles data from weather buoys, Navtex and GMDSS as well as aviation sources such as airports and volmet transmissions. While some weather monitoring systems are overly complex and difficult to use, ClearPoint simplifies weather data using simple weather icons that display clearly and easily on multiple devices. Choice of daily, monthly or annual subscriptions.

KEY FEATURES

- 5 day forecast of weather patterns, fronts, visibility, clouds, wave height and wind
- Wind, pressure, swell, sea and air temperature data overlaid on world map
- Lightning prediction overlays
- IR thermal radar and satellite imagery
- Ice reports, ocean currents, cloud cover & visibility, altimetry and bathymetry, rainfall data and more
- Windows 2000, XP or Vista, 512Mb RAM min. Requires internet connection

ORDER CODE - ZCLEHDWS

Turn to the back page for pricing and ordering info NOW!

DigitalYacht

Satellite TV Systems

DIGITALYACHT DIGITAL VISION TV5

Satellite Television System

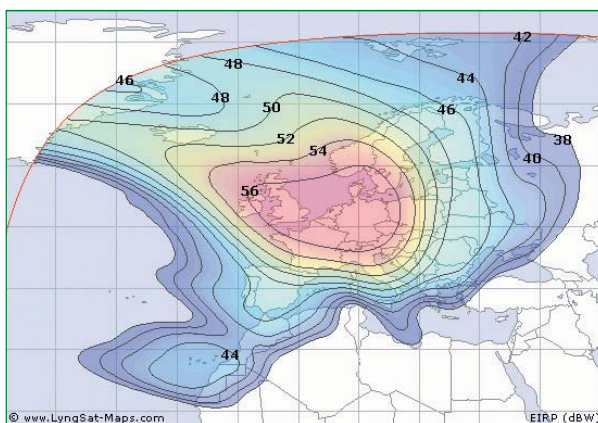
Digital Vision is a breakthrough low cost subscription free satellite TV system with an optional subscription-free service. Satellite TV is now finally affordable, even for smaller boats. Not only does the system cost considerably less than other satellite TV systems, but by using Digital Vision's recommended Freesat service you get access to over 140 TV and radio channels with no subscription fees. Alternatively, Digital Vision is compatible with most popular DVB satellite systems including Sky. Note that you will need to supply a digibox.

Digital Vision is a full in motion satellite TV system featuring a unique low profile, fully automated and compact antenna exclusively from DigitalYacht. With integrated GPS for fast initial lock-on and tracking, Gyro technology for stabilisation and a phased array antenna made up of a series of mini antennas to multiply the gain, the Digital Vision is a top performer in even the most demanding conditions and brings satellite TV to an affordable level. Note that the dome requires an unobstructed view of the sky to operate - coverage is generally OK within the 54° line but atmospheric and local conditions can impact performance



KEY FEATURES

- 12-24v DC operation (TV and decoder - 220v AC, requires inverter)
- Low profile compact antenna weighs only 6kg, 60 x 55 x 17cm
- Two part solution with antenna and below deck satellite TV controller
- Compatible with most popular DVB satellite systems
- Connects to standard satellite TV set top box
- Single coaxial connection between antenna and below deck controller
- 360 degree azimuth range with no cable unwrap
- Fast satellite acquisition
- Supports HD TV
- LAN port for future internet applications and software updates
- IR remote socket (remote IR sensor supplied) to extend remote control range
- Built in gyro compass and GPS
- Tracks even under the most demanding conditions
- Simple installation
- 2 year warranty



Eurobird 1 Footprint

SUPPLIED WITH

Antenna, coax cable and below deck receiver. Also requires digibox or optional Freesat set top box

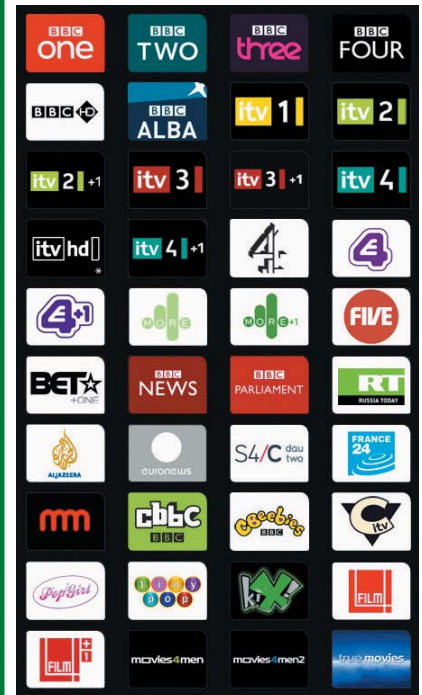
ORDER CODE - ZDIGDV-TV5



Find out more...

What is Freesat?

Freesat is a free-to-air digital satellite television service developed by the BBC and ITV. It is best described as the satellite alternative to the terrestrial Freeview service, with over 140 TV and radio channels available without subscription to users, including HDTV services.



Just some of the 140+ Freesat channels available

Freesat uses the Astra 2D and Eurobird 1 satellites, so you will be able to use Freesat services within the footprint of these satellites.

Can I get all Freeview channels On Freesat?

Because of contractual issues, some Freeview channels are not available on Freesat. Virgin 1, TMF, 4Music, UKTV History, Dave, Five US, Fiver, Sky3 and Sky Sports News are all available on Freeview but encrypted on digital satellite. Sky News is not scrambled but is not available from the Freesat EPG. The channel availability also varies depending on which Freesat set-top box you are using.

Whether you are using Digital Vision with Freesat or another provider, it should also be noted that the satellites have more than one beam which have different footprints (eg Astra 2D has a North and South beam) and the channels available vary depending which beam you are receiving.

Can I get Sky with Digital Vision?

Digital Vision is compatible with Sky, however this introduces an extra level of complexity regarding setting up the service, as there will now be a monthly subscription to pay and Sky have certain requirements of their subscribers - for example, they normally require that their digibox is also connected to a phone line, which could cause some problems on a boat. If you are certain that you want an onboard system that receives Sky broadcasts, we recommend you call us and talk to our Sat TV experts who will be able to recommend the best Sat TV system to suit your needs.

We accept most major credit and debit cards



Autopilots, Instruments, PC Navigation

DIGITALYACHT DIGITAL PILOT

Inboard Autopilot

Digital Pilot is a complete 4-part control system with drive capabilities of up to 40A, the rugged central processor can handle large rotary, hydraulic and linear drives and small ones too! Supplied with a rate gyro and fluxgate compass for exceptional performance, this universal solution suits vessels from 6-40m.



KEY FEATURES

- 8Hz fast heading output
- Intelligent self-tuning
- Auto tack and auto gybe
- NMEA input and output
- Control unit matches 110x110mm displays
- Compatible range of linear and hydraulic drives available
- 2 year warranty

SUPPLIED WITH

Control head, compass/rate gyro sensor, processor and rudder angle transducer

ORDER CODE - ZDIGGS50



DIGITALYACHT INTELLECT ID100 & ED100

Navigation & Engine Monitoring Instrumentation

The Intellect Series uses the latest NMEA2000 databus standards as well as being able to incorporate legacy NMEA0183 systems and the engine manufacturer's NMEA-equivalent, J1939 format. This allows the display to act as a gateway between the multiple protocols. The ID100 is used to display navigation data, while the ED100 is used to display engine data, such as engine oil temperature and pressure, tank levels, alternator voltage, current and RPM. With a sunlight viewable graphic screen, the user can display data in digital or analogue format and even program the instrument so that just one button press brings up specific information. Either display may be added to any existing system as it intelligently looks at the data available and can act as a general purpose repeater.



KEY FEATURES

- Highly configurable, waterproof 110mm x 110mm format instruments
- Sunlight viewable graphic screen
- Can display data in digital or analogue format
- Building a system from scratch is as simple as adding a transducer
- Wide variety of speed, depth, compass, GPS and wind transducers are available
- ID100 acts as NMEA2000 to NMEA0183 bi directional gateway

ORDER CODE - CALL FOR DETAILS

NOBELTEC VNS MAX PRO

Visual Navigation Suite Software



Powerful yet simple navigation - VNS MAX Pro works with C-Map MAX Pro™ charts and has support for Microsoft® Vista™, real-time vessel positioning, quilting for seamless chart integration, distance and bearing to active mark/route/target, unlimited route and waypoint placement, GPS upload/download, twilight and night display, integrated ETA calculator, auto-pilot support and much more! The system also serves as the launch platform for sounder and radar integration and feature-specific plus pack add-ons.



KEY FEATURES

- Powerful 3D Navigator and shaded relief feature brings hidden information to life right on your screen
- Fully customisable NavInfo panel for immediate display and histogram representation of key navigation data
- Hand panning tool
- GRIB weather overlay
- Handy "undo" feature
- GPS signal strength
- Trip odometer display



ORDER CODE - CALL FOR DETAILS

NOBELTEC ADMIRAL MAX PRO

Navigation Software



Admiral builds on the success of the award winning Visual Navigation Suite by adding even more advanced features. Like VNS it supports C-Map MAX Pro™ charts and works with Microsoft® Vista™, but adds advanced multi-monitor support, GlassBridge™ Network, AIS filtering, vessel scaling and the easy-to-use NavView touch-screen, with a big-button user interface. If you're looking for the ultimate PC navigation system, your yacht deserves nothing less than the most powerful solution available - Admiral MAX Pro.



KEY FEATURES

- Hand panning tool
- Radar target tracking (requires InSight Radar box)
- Dual radar support
- Display Admiral on up to seven monitors
- GlassBridge Network - create a complete navigation network using multiple computers sharing data, radar overlay, nav objects and charts
- Track line colouring
- Display up to four video camera feeds



ORDER CODE - CALL FOR DETAILS

Turn to the back page for pricing and ordering info NOW!

Standard Horizon

VHF Radios

STANDARD HORIZON GX1500E

Fixed DSC VHF Radio

BoatOwner

Compact VHF for small craft such as RIBS and sports boats, yet still ideal for larger boats. It has one of the largest displays in a radio of this size, with a big rotary channel selector knob. Add optional CMP25B or VH-310 remote mic to become a complete dual station radio with the option to communicate and send a DSC distress call from two separate onboard locations.



KEY FEATURES

- Priority scan and dual watch
- Customisable channel naming
- Versatile user-programmable scanning
- Position, date and time displayed when interfaced with a GPS or chart plotter
- Privately poll and display another vessel's position
- Waterproof front panel (IPX7)

ALSO CONSIDER

- Icom M421, Raymarine Ray54E, Navman 7100

ORDER CODE - ZSTAGX1500E

STANDARD HORIZON GX3000E

Fixed DSC VHF Radio

Class D DSC transceiver with a large display and a rotary channel selector. A powerful 30W loud hailer is integrated offering listen back, fog signalling and other features and the 2.25in audio speaker delivers a 4.5 Watt output, even in the poorest conditions.



KEY FEATURES

- All the features of the GX1500E
- Compatible with up to two CMP25B or the new VH-310 remote microphones - turn the GX3000E into a full function dual-station radio
- Position, date and time displayed when interfaced with a GPS or chart plotter
- Privately poll and display another vessel's position
- Waterproof front panel (IPX7)

ORDER CODE - ZSTAGX3000E

STANDARD HORIZON VH310

Second Station Telephone Handset

Submersible telephone handset capable of remotely controlling all radio and DSC functions of the fixed VHF, including remote control PA and fog signalling. Additional features include intercom from the VH-310 to the connected radio and other remote microphones.



KEY FEATURES

- Compatible with VM3500E, GX1500E & GX3000E
- Complete control of radio functions
- Intercom facility between radio and other remote stations
- CT-100 7m extension cable available

SUPPLIED WITH

Wall mount cradle, routing cable, waterproof panel mount connector

ORDER CODE - ZSTAVH310

STANDARD HORIZON HX750E & HX760E

Waterproof Floating Handheld VHF Radio

This rugged floating handheld VHF is designed to take on the roughest conditions. Incorporating an inbuilt thermometer and SOS Strobe light, the HX750E offers 6W transmit power for maximum transmission range and features programmable scan, priority scan, dual watch and external speaker mic connector. The HX-750E is normally powered using its 1150mAh Li-Ion battery, but it can also be powered from AAA drycell batteries in an emergency using the optional FBA-38 dry cell adaptor. The HX-760E has all the features of the HX-750E but can be used with an optional Bluetooth headset.

KEY FEATURES

- 6 watt Transmit Power
- Waterproof and floats
- SOS strobe light
- External speaker mic jack
- Preset key (10 channels)
- 700mW audio output
- Built in thermometer
- HX-760E features Bluetooth integration with wireless headset

SUPPLIED WITH

1150mAh Li-Ion battery pack, mains charger and belt clip

HX-760E with
optional BH2
Bluetooth headset



ORDER CODE HX750E - ZSTAHX750E

ORDER CODE HX760E - ZSTAHX760E

STANDARD HORIZON HX270E

Waterproof Handheld VHF Radio

This compact, rugged submersible handheld VHF features all International, USA and Canadian channels and a highly legible LCD display with automatic backlight. The preset key allows you to recall the 8 most frequently used channels. Standard Horizon are so confident of the HX270E's waterproof integrity and reliability that they are offering a three year no quibble free of charge "repair or replace" guarantee if it fails for any reason during that period.

KEY FEATURES

- Dual Watch
- Battery charge level indicator
- 1400mAh NiMH battery provides 16hr duty cycle
- Standard three year guarantee

SUPPLIED WITH

Alkaline battery tray, 1400mAh NiMH battery pack, 12v overnight charger and belt clip

OUR VERDICT

A popular, competitively priced unit built to a very high standard. Its rugged design, large display and features make it one of our recommended buys.

ORDER CODE - ZSTAHX270E

EDITOR'S
CHOICE



STANDARD HORIZON HX500E

Waterproof Handheld VHF Radio

Submersible handheld VHF that adds to the features of the HX270E with the option of using external speaker microphones and headsets via the waterproof accessory socket. Now with Lithium Ion battery pack for longer life.

KEY FEATURES

- Selectable transmit power
- 700mW loud audio
- VOX hands-free operation with optional VC-24 headset

SUPPLIED WITH

Li-Ion battery pack, 12v overnight charger, cigarette lighter cable, belt clip

ORDER CODE - ZSTAHX500E



STANDARD HORIZON CMP25B

RAM+ Second Station Mic

BoatOwner

This submersible remote has an oversized LCD display and backlit keys. It operates as a second station to the radio allowing full control of the VHF at the flybridge, in the cockpit, tower or location of your choice.

KEY FEATURES

- Compatible with GX1500E and GX3000E
- Control all VHF functions including PA, foghorn and DSC
- Inbuilt distress alert button
- Display shows channel names and repeats GPS information

SUPPLIED WITH

Bulkhead socket assembly, mounting clip

ORDER CODE - ZSTACMB25B



We accept most major credit and debit cards



Chartplotters

STANDARD HORIZON CP180

5in Chartplotter



The superb CP180 sets new standards for small chartplotters. With a high resolution sunlight-viewable display it's packed with features normally reserved for much bigger, more expensive units including AIS integration - connect an AIS receiver to display position, speed and course of commercial vessels directly on the chart screen!

KEY FEATURES

- External or internal GPS antenna
- 600 waypoints, 20 routes
- 2nm worldwide basemap
- C-Map MAX and NT+ compatible
- Customisable data windows
- VHF DSC polling capability
- Optional FF520 black box fishfinder input
- Compatible with VM3500E, GX1500E & GX3000E VHF radios
- Radar Integration
- AIS integration
- 3 year warranty

SUPPLIED WITH

12 channel GPS, mounting bracket, flush mount kit

ORDER CODE (EXT ANTENNA) - ZSTACP180E

ORDER CODE (INT ANTENNA) - ZSTACP180I

STANDARD HORIZON FF520

Dual Frequency Fishfinder Module



Black box 50/200kHz fishfinder module for the CP180, CP300 or CP500 chartplotters.

KEY FEATURES

- Dual frequency 50/200kHz
- Fish symbols or coloured echo
- Up to 4 x zoom
- White line distinguishes between fish and seabed
- Sensitivity time control reduces surface clutter
- Fish alarms
- Choice of transducers - Xducer ID detection system automatically selects the power output and configures the parameters to suit the transducer

SUPPLIED WITH

Transducer supplied separately and must be specified

ORDER CODE - ZSTAFF520

Tech info

Sitex Radar Scanners

To add radar functionality on your Standard Horizon chartplotter, you simply need to add a Sitex radar scanner -

Part No.	Size	Power	Type	Range
ZSITMDS1	12in	2kW	RD	24nm
ZSITMDS8	20in	2kW	RD	24nm
ZSITMDS9	24in	4kW	RD	36nm
ZSITMDS10	48in	4kW	OA	48nm

RD - Radome Antenna (enclosed)

OA - Open Array

STANDARD HORIZON CP500

12in Chartplotter

With a big, bold, 12in sunlight-viewable screen, the CP500 offers all the features of the CP300 with the addition of an alphanumeric keypad and radar compatibility.



KEY FEATURES

- 12in 800x600 pixel sunlight viewable TFT colour display
- Radar and AIS integration
- 5 NMEA outputs, 2 NMEA inputs, 2 video inputs for security cams, DVD etc
- VGA output for repeaters/second stations

SUPPLIED WITH

12 channel GPS, mounting bracket, flush mount kit

ORDER CODE - ZSTACP500

STANDARD HORIZON CP300/CP300i

7in Widescreen Chartplotter

This chartplotter features a large, high resolution 800x480 pixels 7in display and 6 customisable quick keys for fast navigation of the chartplotter functions. An easy-to-follow menu page allows quick access to the various navigational screens, whilst all data windows are fully customisable. Working in conjunction with either C-Map MAX or NT+ cartridges, there is an amazing degree of information available.



KEY FEATURES

- External or internal 12-channel WAAS/EGNOS GPS antenna
- 2 NM Worldwide background map included
- Radar and AIS integration
- 3000 marks/waypoints, 50 routes
- 5 NMEA outputs, 2 NMEA inputs, video input
- VHF DSC position polling
- Optional fishfinder black box
- 3 year waterproof warranty

SUPPLIED WITH

12 channel GPS, swivel mounting bracket, flush mount kit

ORDER CODE - ZSTACP300

Turn to the back page for pricing and ordering info NOW!

Handheld VHF Radios

ICOM IC-M35**Buoyant Handheld VHF Radio**

Imagine a radio that's smart enough to adjust its own volume level to account for the surrounding noise level. Icom's new IC-M35 buoyant VHF marine handheld radio does just that with its Clear Voice Boost technology. This measures the ambient sound pressure level so that during a sudden burst of noise the IC-M35 not only automatically adjusts the volume but also the transmit level as well so your conversation is sent and received as clearly as possible no matter how noisy the background is. The inbuilt noise cancelling microphone further enhances the audio quality.

KEY FEATURES

- 6W output power
- Buoyant and waterproof to IPX7
- Clear Voice Boost override button
- Lightweight Lithium-Ion battery
- Up to 8 hours use on a single charge
- Optional waterproof speaker microphone

**SUPPLIED WITH**

Li-Ion battery pack, charger, belt clip and lanyard

ORDER CODE - ZICOM35

ICOM IC-M33**Buoyant Handheld VHF Radio**

This revolutionary 5W floating radio is waterproof to IPX7 and has been designed to be easy to use. The ergonomic design of the case means it's easy to hold and use, even with gloved hands. As with all Icom handhelds, it features a large, easy to read backlit LCD and the 980mAh Li-Ion battery pack provides 9 hours of operating time. Another innovative feature is the "AquaQuake" draining function - a vibrating sound from the loudspeaker clears water away from the speaker grille.

KEY FEATURES

- Quick channel selection with Favourite channel function
- Dual/Tri-watch and Auto scan functions
- 4-step battery life indicator, 2-step power saver
- 70 programmable channels
- Optional HM-165 waterproof speaker-microphone
- Optional alkaline cell battery case

**SUPPLIED WITH**

980mAh Li-Ion battery pack, charger, belt clip and lanyard

ORDER CODE - ZICOM33

ICOM IC-M71**Handheld VHF Radio**

The IC-M71 sets the standard for handheld VHF radios in design, waterproofing and battery technology. The durable and rugged body is waterproof to IPX8 standard and it was the first VHF marine handheld to feature output power of 6 Watts. Its internal speaker uses a bridge-tied load (BTL) audio amplifier to increase the audio output and it delivers a loud 600mW audio output for clear sound, even in noisy environments. The AquaQuake function ejects water from the speaker grille with low frequency sound.

KEY FEATURES

- Standard high capacity 2000mAh Li-Ion battery pack - up to 16 hours operation
- 2-step power saver
- 70 programmable channels
- Voice scrambler version available
- Hands-free operation with optional headset
- Optional speaker mic

**SUPPLIED WITH**

2000mAh Li-Ion battery pack, "Smart" battery charger, belt clip, lanyard

ORDER CODE - ZICOM71

ICOM IC-M87**Handheld VHF/PMR Radio**

Tough, waterproof 22 channel PMR radio with large, backlit LCD and 5 Watts output power. Simple to operate, even when wearing gloves. Self check function monitors unit temperature and battery voltage.

KEY FEATURES

- Simple add/delete TAG scanning operation
- Automatic scan function
- 2 step power saver
- Key lock function
- Wide range of accessories including optional speaker mic and AA battery case

SUPPLIED WITH

Li-Ion battery pack, charger, belt clip and hand strap

ORDER CODE - ZICOM87.001


Don't forget...
V-Tronix Antennas & Fittings

You've bought a new radio, but is your antenna past it? Remember - a poor antenna = poor performance!

YHK

Stainless Steel Whip + Hawk wind indicator

- Low windage
- 20m cable
- Solderless connection
- PL259 plug

**YWX Whipflex**

Stainless Steel Whip

- Low windage
- 20m cable
- Solderless connection
- PL259 plug

**HA156C Heliflex**

Stub Antenna

- Low windage for racing yachts
- Helical construction
- 20m cable
- PL259 plug
- No groundplane required

**YRR Raider**

RIB Antenna

- Specially designed for rigid inflatable boats
- Short helical design to avoid snagging
- Solderless connection
- 6m cable
- PL259 plug

**RV120 / RV120-P**

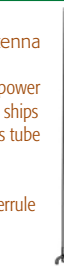
1.4m GRP Antenna

- Ideal for smaller power boats and workboats
- 6m cable
- PL259 plug
- Stainless steel ferrule (RV120)
- Polycarbonate ferrule (RV120-P)

**RV240**

2.4m GRP Antenna

- Ideal for larger power boats and small ships
- Strong fibreglass tube
- 6m cable
- PL259 plug
- Stainless steel ferrule

**AA20**

Active Antenna

- Receive only
- For Navtex, Weatherfax AM/SSB receivers etc
- 20m cable
- BNC plug
- Use with AAX1/AAX5

**AAX1**

Power Supply

- Use when DC power is not supplied by the receiver
- 10-30v DC
- 1m cable
- BNC jack

**AAX5**

Power Supply / Splitter

- Use when DC power is not supplied by the receiver
- Supply up to 5 receivers with one antenna
- 10-30v DC
- 1m cable
- BNC jack

**WS200-P**

Extension Loudspeaker

- Surface or flush mount
- Weatherproof, UV resistant
- Suitable for 4 or 8 ohm systems

**ARMNT-P**

Ratchet Mount (Nylon)

- 4-way swivel mount
- Deck or side mount
- Quick release lever
- UV resistant
- Suitable for antennas less than 2.4m

**ARMNT**

Ratchet Mount (S/Steel)

- 4-way swivel mount
- Deck or side mount
- Quick release lever
- Suitable for all powerboat antennas



We accept most major credit and debit cards



Fixed VHF/SSB Radios

ICOM IC-M505E

Fixed DSC VHF Radio

All-in-one DSC VHF with large dot matrix LCD, rotary volume, squelch and channel select knobs and fistmic. The IC-M505 is compatible with the HM-162 Commandmic enabling full function dual station control of its DSC functions, intercom and other remote functionality including foghorn and a loudhailer.

KEY FEATURES

- Waterproof (IPX8)
- Class D DSC
- NMEA input/output
- Dual / Tri Watch
- Fast Scan
- 25w hailer
- Auto fog horn

SUPPLIED WITH

Fistmic, power cable



ORDER CODE - ZICOM505

ICOM IC-M411E

Fixed DSC VHF Radio

A compact waterproof VHF/DSC radio ideal for small boats or where space is at a premium. The large speaker grille gives excellent audio quality. The buttons and display are easy to see in poor lighting conditions. The Aquaquake draining function emits a buzzing sound which sheds any water that gets into the speaker system, ensuring sharp, clear audio even in the worst conditions.

KEY FEATURES

- Dual/Tri watch & multiple scan
- Up to 70 programmable channels
- Programmable channel comment
- External speaker connection
- 100 MMSI directory and up to 40 received DSC messages
- Low voltage indicator and 2-step power saver function

SUPPLIED WITH

Fistmic, power cable



HOT PRODUCT

ORDER CODE - ZICOM411

ICOM MXA-5000

Dual Channel AIS Receiver

The MXA-5000 dual channel AIS receiver allows boat owners to receive AIS info (both Class A and Class B signals) on two channels simultaneously and outputs it to a computer, radar or chart plotter, aiding navigation and collision avoidance.

KEY FEATURES

- Overlay AIS info on multifunction displays, chart plotters, or radars
- Data input port for multiplexing GPS and AIS data
- AIS data output via NMEA0183
- Full duplex receiver
- Inbuilt antenna splitter
- AIS tracking

NEW FOR 2009



ORDER CODE - ZICOMXA5000

ICOM PCR1500

PC Receiver

PC-based radio scanner that connects to your PC via USB, providing wide frequency coverage from 10kHz to 1300MHz with SSB, CW, AM, FM and WFM modes. Ideal for receiving weatherfaxes etc if you don't have an SSB transceiver.

KEY FEATURES

- Monitor 25 channels on screen at a glance
- Choose the screen you want to operate from - Communication Receiver, Component Style, Compact Screen
- Unlimited number of memory channels

ALSO AVAILABLE

- R1500 - connect to PC or control via remote head, high speed scanning (60 channels/sec), plus various noise reduction features for clearer receiver sound.

ORDER CODE PCR1500 - ZICOPCR1500

ORDER CODE R1500 - ZICOR1500



ICOM IC-M603E

Fixed DSC VHF Radio

The IC-M603E is compatible with up to two HM-162 Commandmics, giving full remote control of all DSC functions, plus intercom capabilities and other remote functionality including foghorn and loudhailer. The IC-M603E also features the innovative AquaQuake function which emits a vibrating sound to clear water away from the speaker grille.

KEY FEATURES

- Inbuilt Class D DSC operation
- High resolution LCD
- Waterproof (IPX7)
- Front and rear microphone connection
- 30 Watt 2-way hailer capability
- Listen back through your hailer

SUPPLIED WITH

Fistmic, power cable



ORDER CODE - ZICOM603

ICOM HM-162 COMMANDMIC III

Full Function Remote Fistmic

Handheld fistmic with LCD display and multi jog dial giving full control of the new IC-M505Euro including its DSC functions, intercom and other remote functionality including foghorn and a loudhailer. This allows the user to operate the transceiver from many areas of the vessel such as the deck or fly bridge with ease. The Commandmic fits in the palm of your hand comfortably and the multi jog dial enables easy and intuitive operation.

KEY FEATURES

- Large backlit dot matrix LCD display
- Distress Alert button on rear of unit
- Large 45mm speaker give loud, clear sound
- Compatible with IC-M505
- Waterproof to IPX8



ORDER CODE - ZICOHM162E

ICOM IC-M801 & IC-M802

SSB Transceiver

Powerful SSB radio system which meets Class E (IC-M801E) and GMDSS Class A (IC-M801GMDSS) specifications and features inbuilt DSC facilities. The main transceiver unit can be installed out of sight, while operation is via a compact remote control panel with a large, easy to read display. Two large bank and channel dials make channel selection fast and easy. 1355 ITU channels, up to 16 banks of user channels, 17 banks of ITU channels - each with up to 20 channels per bank Inbuilt modem for email and data services. NMEA in for GPS, RS-232C port for PC input. The remote control can be integrated with the IC-M601 or IC-M505 VHF radio to form a complete MF/HF/VHF communications station.



IC-M801E UK TYPE APPROVED!

KEY FEATURES

- Digital signal processor
- 125W (PEP) output
- VFO mode option
- Wide band receive coverage (0.5 – 29.9999MHz)
- Headphone jack, RS-232C/NMEA input, GPS input, printer output and D-SUB connector for NBDP/FSK terminal
- Available with telephone handset or fistmic
- IC-M801GMDSS meets MED96/98/EC wheelmark requirements for SOLAS
- Icom M802 for non-UK vessels also available

ORDER CODE M801 12V INC ATU141 - ZICOM801-PK1

ORDER CODE M801 24V INC ATU141 - ZICOM801-PK2

ORDER CODE M802 12V INC ATU140 - ZICOM802-PK1

This is just a small selection of our full range of products!

T&T/Thuraya/Iridium

Satcoms

THRANE & THRANE SAILOR FLEETBROADBAND 250 & 500

Voice & Broadband Internet Access

Sailor FleetBroadband is the new benchmark for broadband Internet at sea and standard IP applications. Reliable high-speed IP communication is now available to all vessels, providing broadband data and voice simultaneously on the latest generation of Inmarsat satellites.

These unique solutions give you faster, more cost-effective access to data services than ever before. Simultaneously having access to voice and high-speed data services on a global basis will revolutionise data access on vessels. Sea chart information, online weather data, route planning and crew calling can all be undertaken at the same time.

KEY FEATURES

- IP connection for e-mail and internet/intranet access including secure VPN
- Streaming IP, guaranteed bandwidth
- ISDN (Sailor 500 FleetBroadband only)
- Sailor 250 - data up to 284Kbps
- Sailor 500 - data up to 432Kbps
- Voice and data simultaneously
- Compact hardware
- Sailor 250 dome 33cm diameter,
- Sailor 500 60.5cm diameter



ORDER CODES - CALL FOR CUSTOM QUOTE

THRANE & THRANE TT-3026D

Mini-C System

The world's first Inmarsat Mini-C system, comprising transceiver, antenna, and 12-channel GPS receiver in a single unit. The compact design and power conserving features make it very attractive for tracking and e-mail applications. It ensures fast and reliable transfer of vital information, e.g. position reporting, data monitoring, messaging, loading and unloading information, route planning, etc. It also features an advanced sleep mode function and includes a number of port options supporting interfacing requirements as well as six configurable I/O pins which can be connected to remote sensors, relays, or switches.

KEY FEATURES

- Extremely low power consumption
- Send and receive internet, e-mail, telex, Inmarsat-C, X-25, SMS (depending on applications)
- Optional message terminals available if no PC used
- Type approved for maritime applications
- Receives Enhanced Group Call (EGC) messages for SafetyNet and FleetNet

SUPPLIED WITH

EasyMail communication software for Windows



ORDER CODE - ZTHRTT3026D

IRIDIUM 9555

Iridium Satellite Phone

The smallest and most powerful phone Iridium has ever made. Its compact, light and easy to use, featuring a brighter screen, a speaker phone, improved Short Messaging Service (SMS) and email capabilities and an upgraded mini-USB data port. The new phone is engineered to withstand and perform well in the world's most rugged, remote and industrial environment, including being water and shock-resistant. Combined with the only communications network offering truly global coverage, the 9555 delivers the reliable, secure, real-time, mission-critical communications service that Iridium users have come to expect.

KEY FEATURES

- 27% lighter and 30% smaller than the old 9505A handset
- Retractable antenna for compact carrying
- Illuminated, weather-resistant keypad redesigned for ease-of-use
- Menu configurable in any of 21 languages
- Additional address book fields for phone numbers, email addresses and notes
- Programmable international codes for automatic dialling
- Built-in help function
- Integrated speakerphone
- Mini-USB data port

Standby time up to 30 hours, talk time up to 4 hours

SUPPLIED WITH

Battery, AC charger, DC car charger, holster, handsfree kit, external antenna



NEW FOR
2009

ORDER CODE - ZIRIIRSS9555

THURAYA SO-2510

Satellite Phone

The world's smallest satphone!

At only 130g, this lightweight pocket sized phone is designed to be highly portable and user friendly.

KEY FEATURES

- 1.5in 128x128 pixel display
- SMS, polyphonic ring tones
- Enhanced GPS Services
- Internal memory - up to 32Mb
- Connectivity - USB
- GmPRS equipped - up to 60kbps
- Fax and Data at 9.6kbps (Circuit Switched)
- Talk time up to 2.4 hrs



ORDER CODE - ZTHUSO2510

THURAYA SG-2520

Triband Smartphone

Satphone, GSM phone and GPS in one handset with a 177x200 pixel colour display and 1.3 megapixel camera with 5x digital zoom.

The SG-2520 is the only satellite tri-band phone in the market that allows operation on three different types of GSM networks: 900, 1800 and 1900MHz offering greater flexibility in high traffic GSM environments with increased phone usability and voice quality in Asia, Africa, Australia, Europe and North America.

KEY FEATURES

- World's smallest dual mode satellite phone
- Enhanced GPS Services
- Internal memory - up to 128Mb
- External memory - SD memory card
- GmPRS equipped - up to 85.6kbps (GSM), up to 60kbps satellite mode
- Fax and data at 9.6kbps (Circuit Switched)
- Talk time up to 2.4hrs (satellite) up to 4hrs (GSM)



ORDER CODE - ZTHUSG2520

IRIDIUM SAILOR SC4000

Fixed Iridium Satellite Phone

Suitable for any size of vessel, comprises transceiver, intelligent handset and small marinised antenna. Ideal for crew calling use with pre-paid scratch cards.



KEY FEATURES

- True global coverage - voice and data
- Data rate 9.6kps when compressed
- Rugged construction, lightweight waterproof antenna
- Flexible installation - up to 50m between handset and transceiver, up to 30m coax cable available
- RJ11 port for secondary analogue telephone

SUPPLIED WITH

Transceiver, antenna, handset. Antenna cable sold separately (10, 15, 20 & 30m sizes)

ORDER CODE - ZIRIAS23799

Seen it for less? We will not be beaten on price - call us NOW!

HOW WE DO BUSINESS



WHY NO PRICES?

People often ask why we don't print prices in our Buyer's Guide, the reason is simple -

- The Buyer's Guide comes out once a year, but prices change daily.
- At any one time there will be a number of special offers or mega deals on particular items.
- Some of our suppliers don't like us advertising low prices as it upsets the other dealers who don't have our volume and can't compete!

If you want to find out our latest prices why not visit our online store www.mesltd.co.uk where you can shop securely online, 24hrs a day. Getting an account is easy and free of charge - simply visit our site, register and you can immediately benefit from our megadeals, bundle package specials and other great offers - it even remembers what you've put in your basket for when you return next time!

If you wish we can also provide you with our complete price list as PDF file on request -

- **email us** on sales@mesltd.co.uk,
- **call us** on 01179 114111 or
- **fax us** on 01179 556289



PAYMENT

We accept the following methods of payment - cash, cheque and most credit and debit cards -



- MES will not charge your credit/debit card until the goods are shipped unless it is a highly specialised item, in which case we may ask for a small deposit at the time of order.
- MES also accept Euro and US Dollar payments and bank transfers.



EXPERT INSTALLATION & SUPPORT

Whilst all of the products we offer come with detailed installation instructions, you can't beat the performance you will get from a professional installation. Ocean Install - a sister company of MES - provides specialist marine electronics design, consultancy, installation and service.

- With installation bases in Chichester, Southampton, Poole, Bristol, London, Falmouth, Palma and Antibes, we offer a pan European service at extremely competitive prices. Our team of highly trained technicians offer an unrivalled degree of quality, know-how and craftsmanship.
- Ocean Install's services start at the outset of any project. Our design and consultancy division will put together a detailed electronic system design - ideal for large scale projects where equipment is to be installed by 3rd parties or by a boat builder.
- Our unique **Kre-8!** design solution gives you a single document to allow a sophisticated electrical and electronics system to be implemented in a cost effective manner - and to deliver the required technology effectively. The **Kre-8!** package can include kitting and tendering lists allowing you to shop for the best value solution.
- Our engineers are all factory trained electronic technicians as well as having intimate knowledge of boats. This winning combination of knowledge and practical experience means you'll get a truly professional installation and get the most out of your equipment. Whether it is a simple radar system or a complex computer network, we'll be happy to offer a competitive quote.
- If you prefer to fit yourself, then you may like to take advantage of our commissioning service - our team will pick up where you leave off, carrying out final connections and setting up the system. You may also be able to take advantage of extended warranty options where we commission the equipment.
- Service - we also offer on board and bench service repair for electronic equipment.
- Support & Training - a few hours spent on professional training can really reap rewards in terms of product operation and usability. Ocean Install has a team of people happy to offer friendly and easy to understand product training and help you get the best out of your system.
- Sophisticated products need sophisticated and specialist support. We're here to provide the support you need by phone, fax and e-mail. The fastest route to a support solution is to e-mail our team of technicians at tellmehow@oceaninstall.com with your customer reference number and details of your query and we'll have you up and running in no time.
- We offer a range of extended warranty packages with onboard and world wide support



PROFESSIONAL TRAINING

With loads of extra functionality and a whole host of new features built into the latest electronic products, it makes sense to get up to speed on your system and get professional training.

Our training facility at our Bristol office runs a series of short, 1 day intensive courses on some of the most popular systems we sell. They aim to provide you with the techniques to get the best from your system and can also cover installation and interfacing for DIY installers.

Courses are endorsed by the manufacturers and are designed around small user groups to get the best possible knowledge transfer. Book today by calling 01179 114111 or email sales@mesltd.co.uk



UK Head Office -
Marine Electronic Services Ltd
Marine House
Unit 10, City Business Park
Easton Road
Bristol BS5 0SP
Tel 01179 114111
Fax: 01179 556289
Email: sales@mesltd.co.uk
Web www.mesltd.co.uk



Poole Sales Office -
Unit 2
Vitrage Technical Park
Nuffield Industrial Estate
Witney Rd
Poole BH17 0GL
Tel 01202 666066

Chichester Sales Office
Chichester Marina
Chichester PO20 7EJ
01243 888423

Please call for European offices

FLOATING HANDHELD VHF

A waterproof VHF is all very well, but not much use if it's at the bottom of the sea! Icom and Standard Horizon have both solved this problem with their range of floating waterproof handheld VHF radios!



©2009 Marine Electronic Services Ltd

Created by  Avalyn Design avalyn.co.uk

01179 114111 • www.mesltd.co.uk