



**MARINE
ELECTRONIC
SERVICES
LTD**

Marine Electronics Buyer's Guide 2010

A WORLD FIRST!

DigitalYacht's new SmarterChart500 is the first 5in chartplotter to feature **INBUILT AIS!**

PAGE
35



SAVE

UNBEATABLE DEALS ON ALL THE LEADING BRANDS!

Call Now! 01179 114111

NEW FOR 2010

GARMIN 6000/7000 SERIES

Garmin have done it again with these fantastic looking colour combis featuring lightning-fast performance!



PAGE
15

LOW COST SATELLITE TV IS HERE!

If you thought satellite TV was beyond your budget, or your boat was too small then think again!

PAGE
44



THE ULTIMATE COMBIS?

RAYMARINE E-SERIES WIDE



PAGE
3

Raymarine do it again with these impressive touchscreen Combis that really are as good as they look!

INBUILT AIS

STANDARD HORIZON GX2100



PAGE
38

Innovative new VHF features inbuilt AIS with onscreen display.

AIS FOR ALL!

DIGITALYACHT
ANT200

PAGE
35

This "all in one" AIS smart antenna is perfect for small boats, even RIBs and sports boats or where space is limited!



PLUS OVER 500 OTHER GREAT PRODUCTS INSIDE!

THIS GUIDE FEATURES JUST A SMALL SELECTION OF OUR FULL RANGE OF OVER 6,000 PRODUCTS VISIT OUR ONLINE SHOP AT WWW.MESLTD.CO.UK FOR THE LATEST PRICES AND SPECIAL OFFERS

THE MARINE ELECTRONICS BUYER'S GUIDE 2010



Welcome to our latest Buyer's Guide with hundreds of exciting new products including radars, plotters, autopilots, instruments and satellite communications. Over the past 22 years, Marine Electronic Services Ltd has grown to become Europe's leading specialist marine electronics supplier. Our philosophy of expert advice, a passion for customer service and competitive prices offers a winning combination – unmatched by any of our competitors. Our specialist advice and an unbiased selection make choosing the right electronics for your application even easier. Plus, our well stocked showrooms offer the biggest selection ever and the ability to compare products from the world's leading manufacturers. Most importantly, our team don't just answer the phone – they provide solutions and expert knowledge

Plus, with installation and service facilities in the UK and Europe, we're your first choice for a professional installation. Our office in Poole will look after all your S Coast installation needs and if you can't find an office close to you, take advantage of our mail order and export facilities - fast despatch to anywhere in the world at globally competitive prices. The choice is yours - call in, call up or click on our online store www.mesltd.co.uk - your route to a better marine electronics solution.

Finally, remember that what you see here is just a selection of our 6000+ product line - if it works on wires and fits on boats, then we like to think we do it!!

Good Boating!

NICHOLAS HEYES
Managing Director



© 2010 Marine Electronic Services Ltd. The information in this catalogue is correct at the time of going to press, using specifications supplied by the manufacturers. However, products are constantly being updated, hence MES can accept no responsibility for any errors in the description of any of the products featured in this catalogue.

By Manufacturer

Jeppesen Marine (C-Map)	30-31
Digitallyacht	34-35
EasyAIS	37
Echopilot	27
Echomax	37
Furuno	24
Garmin	11-17
Geonav	19
Humminbird	18-19
Icom	40-41
Intellian	44
Iridium	45
KVH	46
Lowrance	20-21
Marine Pod	28
MB Quart	29
McMurdo	36
Moerer	37
NASA	25
Navionics	32-33
Northstar	26
Raymarine	3-10
Scanstrut	43
SeaMe	29
Simrad	22
Standard Horizon	38-39
Tacktick	23
Thrane & Thrane	45
Thuraya	45
Vesper Marine	37
V'Tronix	42

By Product

Active Radar Reflector	29, 37
AIS	3, 17, 22, 25, 35, 37, 40
Antenna Mounts	43
Autopilots - Cockpit	6, 22
Autopilots - Inboard	6, 7, 17
Battery Monitors	25
Cameras	5, 14,
Cartography	12-13, 30-33
Chartplotters	3-5, 11, 13-15, 18-22, 24, 26, 39
Combi Units	3-5, 13-15, 19-22, 24, 26, 39
Entertainment	5, 26, 29
EPIRBs	36
Fishfinders	3-5, 13-16, 18-22, 24, 26-27, 39
Forward Looking Sounders	27
GPS - Fixed	11,
GPS - Handheld	11, 19, 21
Instruments	9, 16, 23, 25, 27
Loudspeakers	29, 42
Marine Monitors	5, 46
Marine Pods & Mounting Accys	28, 42-43
Navtex	24-25, 37
PC Software	10, 25, 30, 33, 35
PC Systems & Peripherals	25, 30, 33-35, 37, 40
PLBs & SARTS	36
Radars	3-5, 14-15, 20, 22, 24, 26, 39
Satcoms/Satellite Internet	44-46
Satellite Compass	24
Satellite TV	8, 44, 46
Satnav	11
SSB Radios	25, 41
VHF - Fixed	8, 17, 21, 26, 38, 41
VHF - Handheld	21, 38, 40
VHF Antennas	42
Weather Receivers	3, 24-25
WiFi	34

RAYMARINE E SERIES WIDESCREEEN

9, 12 & 14in Colour Touch Screen Combi Displays



Touch screen or keypad operation? Now users have a choice of flexibility of operation with Raymarine's new widescreen combi displays. E Series Widescreen is the most flexible, technically advanced, and easy to use multi-function navigation display to date. It also raises the bar with its bold new styling, offering the maximum ultra-bright image and size for its footprint.

Touch screen operation has the advantage of being quick and easy, but it can be challenging to use in rough weather or when moving at speed. HybridTouch™ offers the choice of operating options giving users the flexibility of touch screen control alongside traditional hard keys - a seamless mix of both methods.

KEY FEATURES

- Network up to 5 E Series displays via SeaTalk/hs
- Optically bonded super high resolution displays
- Completely new user interface allows users to easily personalise their home screen
- Inbuilt tutorial guides you through the features
- Full 'qwerty' on-screen keyboard for editing routes and waypoints etc
- Intuitive touch-by-touch manual route building
- Unicontrol™ integrates OK, Cursor & Rotary controls
- Softkeys for essential navigation functions
- Anti-collision alarm uses boat draught, height and beam data to safely navigate shallow water and help avoid chart hazards
- 48rpm high speed radar scanning
- Bird Mode helps fishermen detect and track fish shoals by tracking sea bird movement

- Fully customisable screens - see everything at a glance, fishfinder, HD radar, charting, engine data, fuel levels and more
- Low profile flush mounting
- Rugged IPX6 waterproof housing
- On board graphics accelerator
- Smoother 3D graphics and video
- Composite Video In
- Optional on board cameras
- Smartpilot X Series autopilot control
- Compatible with Digital Radar, Digital Sounder Module, AIS and SIRIUS Weather Module

HOT
PRODUCT

SUPPLIED WITH

Power & interface lead, mounting bracket

RAYMARINE SR100

Sirius Weather Receiver (US Only)

Graphically display up to the minute animated weather forecasts on your Raymarine system. The SR100 delivers state-of-the-art weather forecast information. A monthly Sirius Marine Weather subscription is required.



KEY FEATURES

- Compatible with A, C, E and G Series systems
- WSI NowRad® Weather Radar
- Lightning and Storm Tracks
- Sea Surface Temperature
- Warnings, observations and buoy reports
- Surface Pressure, Wind and Wave forecast and more

RAYMARINE DSM30 & DSM300

HD Digital Sounder Module

Add HD Digital sounder technology to the C and E Series with the DSM30 (600W) and DSM300 (1000W) 50/200kHz dual frequency digital sounder modules. See table on right for transducers available.

KEY FEATURES

- Submersible to IPX7 standard
- hsb2 networking compatible
- HD Digital technology virtually eliminates clutter
- Auto Adaptive Gain control - no adjustment required
- Digitally Adaptive Transmitter Receiver with infinite receiver bandwidth settings and digital filter
- A-Scope (Real-Time Display): Split second real time representation of fish and bottom features
- Auto or manual zoom (x2, x4 or x6)
- Bottom lock and white line

SUPPLIED WITH

Transducers must be specified. If fitting to an E Series a SeaTalk/hs crossover coupler or SeaTalk/hs Network Switch is required



RAYMARINE AIS500

Black Box Class B AIS Transceiver

See and be seen with the AIS500 which receives AIS targets and transmit your vessel information to other AIS receivers. The AIS500 easily interfaces to Raymarine multifunction displays allowing AIS targets to be graphically overlaid in both chartplotter and radar modes.

NEW FOR
2010



KEY FEATURES

- Dual channel AIS monitoring
- Inbuilt antenna splitter and NMEA multiplexer
- Dedicated external 16 channel GPS antenna
- NMEA 0183 output - compatible with other makes
- Targets displayed on chart and radar screens

RAYMARINE AIS250

Black Box AIS Receiver

The Raymarine AIS250 interfaces with A, C, E or G Series systems, allowing AIS targets to be graphically overlaid in both chartplotter and radar modes.

KEY FEATURES








- Receives Class A and B AIS broadcasts
- Displays target name, course, speed and status
- Reconcile AIS and radar targets for added safety
- Inbuilt antenna splitter and NMEA multiplexer
- Two NMEA 0183 inputs, two NMEA 0183 outputs



Tech info

Raymarine Echosounder Transducers

Suitable for the Digital Sounder Modules and most Raymarine stand-alone fishfinders (except A Series).

- | | | |
|-------|---|---|
| P319 | Plastic thru hull
600W, 50/200kHz
Depth only |  |
| B744V | Bronze thru hull
600W, 50/200kHz
Depth, speed, temp
Also available with long stem B744VL (shown) |  |
| P66 | High speed transom mount
600W, 50/200kHz
Depth, speed, temp |  |
| P79 | Adjustable in-hull
600W, 50/200kHz
Depth only |  |
| SS555 | Stainless steel thru hull
600W, 50/200kHz
Depth only |  |
| B256 | Bronze thru hull high perf
1000W, 50/200kHz
Depth, temp |  |
| B260 | Bronze thru hull v high perf
1000W, 50/200kHz
Depth, temp |  |

RAYMARINE C SERIES WIDESCREEN

9, 12 & 14in Colour Combi Displays



The C Series Widescreen expands the capabilities of the original multifunction display with larger, brilliant displays, increased performance, expanded networking and video integration. Available in 9, 12 and 14in display sizes the new C Series now offers dual station networking capability, a high sensitivity internal GPS receiver and high quality embedded charts. The optically bonded LCD display dramatically improves contrast, eliminates condensation and improves readability.

KEY FEATURES

- Internal high sensitivity GPS sensor eliminates need for an external antenna for most installations
- Embedded chart options: Europe, Coastal US, Latin America-Asia-Oceania
- Also compatible with Navionics Gold and Platinum
- Low profile flush mounting
- Rugged IPX6 waterproof housing
- Dual display networking via SeaTalk/hs
- Sunlight viewable, super high resolution displays :
C90W: WXGA resolution (800x480)
C120W: WXGA resolution (1280x800)
C140W: WXGA resolution (1280x800)
- Intuitive softkeys for essential navigation functions
- Unicontrol™ integrates 'OK', Cursor & Rotary controls into one
- Highly customisable user interface with multiple page and split window combinations
- Processors are 2.5 times faster
- Faster pans & screen refresh
- On board graphics accelerator
- Smoother 3D graphics and video
- Composite Video In
- Optional on board cameras
- Smartpilot X Series autopilot control
- Compatible with Digital Radar, Digital Sounder Module, AIS and SIRIUS Weather Module

SUPPLIED WITH

Power & interface lead, mounting bracket.

RAYMARINE A SERIES

5, 5.7 & 6.4in Colour Chartplotter & Chartplotter/Fishfinder Displays



The feature-packed A-Series are available as standalone chartplotters or combination chart/fishfinders with a powerful inbuilt 500W 50/200kHz HD Digital sounder. All are available with preloaded with Navionics charts and can be further expanded with optional Navionics Hotmaps, Gold or Platinum cartography on compact flash. Each A Series features a high sensitivity internal WAAS GPS receiver providing pinpoint chartplotter accuracy, or add a RayStar 125 GPS antenna for situations where an external GPS antenna is needed.

KEY FEATURES

- A50 - 5in Chartplotter
- A50D - 5in Chartplotter/Fishfinder
- A57D - 5.7in Chartplotter/Fishfinder
- A70 - 6.4in Chartplotter
- A70D - 6.4in Chartplotter/Fishfinder
- Embedded chart options: Europe, Coastal US, Latin America-Asia-Oceania
- Rugged IPX6 waterproof housing
- Sunlight viewable, high resolution VGA displays
- Intuitive softkeys for essential navigation functions
- Create customisable pages via NMEA2000/SeaTalkng
- Two NMEA0183 In/Outputs
- High speed chart redraw
- Compatible with SIRIUS Weather Module
- AIS target tracking (with optional AIS250 module)
- Smartpilot X Series autopilot control

RAYMARINE HD & SHD DIGITAL

Radar Scanners

Raymarine's exclusive Super HD Digital technology gives amazingly clear radar images with unmatched target separation and lifelike presentation that virtually eliminates noise, clutter and false echoes. Super HD Digital processing delivers a radar image that can't be matched by similar analogue or digital radar systems, with a level of performance that rivals that of systems of more than twice the size and power output.



RADOME KEY FEATURES

- Narrow horizontal beam angle - 4.9° for 18in and 3.9° for 24in
- Custom designed LNC (Low Noise Converter)
- Lowest noise on the front end of the system, superior sensitivity and weak target acquisition
- Greatest number of pulse lengths, pulse repetition frequencies and IF bandwidths
- Optimises range discrimination and target detection performance over the entire range scale
- Quieter belt drive operation
- Superior auto functions
- Thin interconnect cable (12.3mm)



OPEN ARRAY KEY FEATURES

- Twice the performance of analogue radar systems
- Reduces the effective horizontal beam width giving the target resolution of a much larger radar array
- Adaptive digital receiver automatically adjusts to changing environmental and sea conditions for a dramatically clearer picture
- Fast digital receiver processor
- 256 color target levels
- Dual range capable
- Thin interconnect cable (12.3mm)
- 12 or 24 volt operation



Tech info

Raymarine Radar Scanners

When ordering your radar system you'll need to specify the antenna you require -

Part No.	Size	Power	Type	Range
RD418D	18in	4kW	RD	48nm
RD424D	24in	4kW	RD	48nm
RD418HD	18in	4kW	RD	48nm
RD424HD	24in	4kW	RD	48nm
A1048HD	48in	4kW	OA	72nm
A1048SHD	48in	4kW	OA	72nm
A1072HD	72in	4kW	OA	72nm
A1072SHD	72in	4kW	OA	72nm
A3048HD	48in	12kW	OA	72nm
A3072HD	72in	12kW	OA	72nm

RD - Radome Antenna (enclosed)

OA - Open Array

Digital and HD Domes are only compatible with C Wide, E Wide and G Series systems



We accept most major credit and debit cards



G Series Navigation System

RAYMARINE G120/G150/G170/G190

Marine Monitors

These monitors not only integrate perfectly with the rest of the G Series System, they can also be used with PCs, CCTV cameras, satellite TV, DVD, game consoles - anything with a VGA or DVI output. All navigation, security and entertainment needs can now be centralised via one set of displays. The impact resistant glass fascia bonded to the LCD prevents condensation and ensures reliability both inside and out.



KEY FEATURES

- 12, 15, 17 & 19in 1024x768 pixels XGA, wide viewing angle and sharp contrast
- 9 video inputs (3 Analogue VGA, 2 DVI, 3 Composite Video, 1 S-Video)
- Direct access keys provide quick access to each video source and major controls
- On Screen Display (OSD) menu and Picture In Picture (PIP)
- Sunlight viewable display with anti-reflective filter
- Low profile, thin bezel for unobtrusive installation

RAYMARINE COMMAND CTR

G Series Command Centre Keyboard



The control point for the G-Series Navigation System, the Command Centre Keyboard can be dash fitted or wireless mounted and offers simple, intuitive control of all system features and functions. A single keyboard can be used to control anything from a single GPM400/G-Series Monitor combination on a smaller vessel right up to multiple monitors and processors on a superyacht.

KEY FEATURES

- Control multiple GPM400 processor modules and display combinations
- LCD identifies each nav station and display in use
- Full remote control of each G-Series display
- Optional wireless kit
- Intuitive softkey interface and alphanumeric keypad
- Inbuilt autopilot control
- Optional wireless upgrade kit and base station

RAYMARINE GVM400

G Series Audio-Video Module

Video server for interfacing up to 4 external video devices to the G Series System. SeaTalk^{hs} networking eliminates the need to route multiple video signal cables throughout the system.

KEY FEATURES

- Integrated video observation system
- 4 composite inputs or 3 composite + 1 S-Video with stereo audio
- View up four video streams simultaneously
- Two GVM400 video modules can be added for up to eight video streams on the network
- Compatible with Raymarine CAM50 and CAM100 marine cameras



RAYMARINE COMMAND CTR

G Series Compact Keyboard



Ideal for installations where space is limited, the Compact Keyboard provides access to the powerful G Series navigation system without sacrificing core functionality. Designed exclusively for flush mounting, the G Series Compact Keyboard provides a clean, unobtrusive appearance that compliments today's modern helm designs.

KEY FEATURES

- Control up to four GPM400 processors and four G Series displays
- Full G Series control with reduced footprint
- LED indicators identify which display is in use as well as the current radar status
- Intuitive colour coded softkey interface
- Mix and match the Compact Keyboard with the Command Center Keyboard in either a wired or wireless configuration in your G Series system

RAYMARINE CAM100 (PAL)

Day and Night Vision Video Camera

Transforms the G & E Series into a powerful onboard video observation systems. Improve docking safety by monitoring blind spots or keep track of the engine room and crew. Use multiple cameras for a total view of your vessel's surroundings. Reverse image version also available.



KEY FEATURES

- Plug & Play with G and E Series
- Automatic switching between true colour (day) and black & white (night) use
- Up to 15m total darkness visibility in night mode.

RAYMARINE GB150 & GB170

15 & 17in Glass Bridge Monitors

Combining the latest advanced technology in a stylish, edge-to-edge black glass screen, these large, ultra-bright sunlight viewable colour displays offer multiple display combinations for every navigational scenario with ultra-sophisticated styling. The monitors can be low profile mounted without requiring a bezel, which facilitates a clean and unobtrusive installation with maximum display size in a small footprint.



KEY FEATURES

- 150 degree viewing angle
- Control from G-Series keyboard
- Impact resistant glass bonded to the LCD to improve contrast, minimise reflections and prevent condensation
- On screen display (OSD) menu and Picture In Picture (PIP)
- Night mode feature dims to red for optimum visibility in low light
- Anti-reflective glass filter reduces reflection and optimizes visibility
- Three VGA, two DVI, composite video and S-video inputs
- Aluminium chassis provides superior strength and durability
- Rated to IPX-6, can be exterior mounted if required

NEW FOR 2010

RAYMARINE GPM400 (Europe)

G Series Processor Module

The core of the G Series system, with a super fast processor, high performance graphics hardware and an inbuilt shock resistant, high capacity hard drive. The rugged aluminium housing is designed for cool, quiet, trouble-free operation under any conditions.



KEY FEATURES

- Pre-loaded with Navionics Platinum charts for the whole of Europe (no unlock codes required)
- Up to 10 times faster than other embedded marine navigation systems
- Compact Flash card reader for card-based charts
- Two high performance DVI/VGA video output ports
- 3000 waypoints/45,000 trackpoints
- Can be used with DSM300/400 sounder module
- Connections for SeaTalkNG, SeaTalk^{hs}, SeaTalk, NMEA2000, NMEA 0183
- Multiple GPM400 module support via SeaTalk^{hs}

RAYMARINE CAM50 (PAL)

Dome Camera

Ideal for interior installations, the unobtrusive dome design is perfect for mounting in the saloon, wheel house or engine room. Ceiling or wall mounted.



KEY FEATURES

- Plug and play with Raymarine G & E Series
- Manually adjustable pan and tilt
- High quality imager, excellent colour reproduction
- Reverse image version also available

Turn to the back page for pricing and ordering info NOW!



VALUE BUNDLE PACKS

Get everything you need to install your system & save money

Using our extensive knowledge of marine electronics we have put together a series of special bundles aimed at particular types of boating. In these packs you will find absolutely everything you need to install your dream system, right down to every cable and bracket.

As well as ensuring you have everything need, there is a significant saving on the cost of all the kit.

Details of all the systems can be found online, but examples include:

Instrument Pack x 3 Instruments



8in / 9in MultiFunction Plotter with GPS

UK/Eire Chart



2kw / 4kw Radome with 10m Cable

Mast Platform



Chart Table VHF

Cockpit Speaker / Remote Station



DigitalYacht ANT200 AIS Receiver



Masthead Antenna with Hawk



**ALL
THIS FOR
ONE SPECIAL
LOW PRICE!**

See website
for details

... Plus Installation Kit

Raymarine

Cockpit & Wireless Autopilots

RAYMARINE ST1000+/ST2000+

Cockpit Tiller Autopilot

Raymarine's range of tiller autopilots are suitable for most tiller-steered sailboats. Easy to use and install they feature a useful backlit display.



KEY FEATURES

- ST1000+ suitable for sailboats up to 2,500kg
- ST2000+ suitable for sailboats up to 4,500kg
- Inbuilt SeaTalk and NMEA interface
- Autopilot and navigation info display
- Weatherproof design, 2-stage pushrod seal
- Low power consumption
- Intelligent course holding software

ALSO CONSIDER

- Eagle ETP10, ETP22, ETP33

Optional Extras

Add second station control to your ST1000, ST2000 and SPX5 Cockpit Pilots by adding the wireless S100 controller.



RAYMARINE SPX5/SPX5GP TILLER PILOT

High Performance Cockpit Tiller Autopilot

The ultimate tiller autopilots, with a fixed control head and compass unit and two very powerful drive unit options but still with low power consumption.



KEY FEATURES

- For sailboats up to 6,000kg (SPX5) and 7,500kg (SPX5-GP)
- Inbuilt SeaTalk and NMEA interface
- Weatherproof design with two stage pushrod seal
- Intelligent course holding software

RAYMARINE SPX5 WHEEL PILOT

Cockpit Wheel Autopilot

Fully enclosed wheel mounted autopilot - no belts or untidy trailing wires. Features wheel mounted drive and a fixed control unit with large backlit display. The convenience of an inboard pilot at the cost of a cockpit pilot.

KEY FEATURES

- Low power consumption
- Backlit display and keypad
- SeaTalk and NMEA interface
- Navigational information repeater
- Intelligent course holding software
- Suitable for sailboats up to 7,500kg
- Can be used on hydraulically steered boats (with optional rudder feedback)

SUPPLIED WITH

Control unit, drive/gearbox unit, fluxgate compass and cabling



Optional Extras

Add second station control to your ST1000, ST2000 and SPX Cockpit Pilots by adding the wireless SmartController.



We accept most major credit and debit cards



RAYMARINE SMARTPILOT X SERIES

Inboard Autopilot System

Raymarine's new SmartPilot X range of inboard autopilots offer more power and greater steering accuracy with advanced steering software and powerful new features. The new ST70 autopilot control enables you to take full advantage of the SmartPilot X Series capabilities and performance. Each system must include at least one ST70 autopilot control, but additional ST6002, ST7002 or ST8002 control heads can also be added for multi-station control. The pilot can also be engaged directly from a Raymarine combi display.

SMARTPILOT X KEY FEATURES

- Complete all in one autopilot options
- Linear, hydraulic and sterndrive options
- Inbuilt rate gyro sensor
- AST (Advanced Steering Technology) and SmartSteer gives superior steering in all conditions and speeds
- Smart Rudder Sense eliminates rudder feedback unit
- SeaTalkng compatibility with ST70 instruments
- Control the pilot from your Raymarine combi display
- New automatic fishing patterns

ST70 AUTOPILOT CONTROL KEY FEATURES

- Primary control head for SmartPilot X Series autopilots
- Unlock the full functionality of the SmartPilot X system
- 3.5in sunlight viewable colour display
- SeaTalkng and NMEA2000 interface
- Digital, compass or 3D isometric displays
- Extra heads can be added for multi-station installations
- Simple intuitive setup and calibration
- Surface or flush mount
- Intuitive dodge function



SUPPLIED WITH

Control, course computer, gyro compass, drive. See box on this page for package information and call us for more details

RAYMARINE ST6002

Second Station Control Head

The ST6002 is a basic optional secondary control unit that can be used alongside the main ST70 control head. It features a large clear display with an analogue rudder angle indicator.

KEY FEATURES

- Large display with analogue rudder angle indicator
- Inbuilt SeaTalk & NMEA interface
- Autopilot, navigation and instrument displays
- Multi station control options
- Remote control ST60/ST60+ instruments



RAYMARINE ST7002

Second Station Control Head

Optional secondary control head takes all the features and performance of the ST6002 and adds a multi-function control unit with large, clear LCD display.

KEY FEATURES

- All the features of the ST6002
- Large display with analogue rudder angle indicator
- Inbuilt SeaTalk & NMEA interface
- Autopilot, navigation and instrument displays
- Multi station control options
- Remote control ST60/ST60+ instruments



RAYMARINE ST8002

Second Station Rotary Control Head

Optional secondary control head with all the features of the ST7002, but with a large, easy to use rotary control knob and power steer option.

KEY FEATURES

- Large display with analogue rudder angle indicator
- Inbuilt SeaTalk & NMEA interface
- Autopilot, navigation and instrument displays
- Multi station control options
- Remote control ST60/ST60+ instruments



Tech info

Selecting your Smartpilot X Series

The Raymarine Smartpilots are designed to suit virtually any kind of boat that is afloat up to 35,000kg (77,000lb) displacement. The flexible modular system allows you to build up a package of drive, electronics core pack and control unit to suit your unique requirements -

1. Drive Selection

Raymarine offer a selection of drives to suit the size and steering type of your boat -

Linear Drives 12 & 24v (specify)

Type	Drive	Stroke	Displacement
1*	Mech	12in	11,000kg (24,000lb)
2S	Mech	12in	15,000kg (33,000lb)
2L	Mech	16in	20,000kg (44,000lb)
2	Hyd	10in	22,000kg (48,000lb)
3	Hyd	12in	35,000kg (77,000lb)

Reversing Pumps 12 & 24v (specify)

Type	Ram Capacity (Min-Max)
0.5*	50-110cc (3.1-6.7in ³)
1	80-230cc (4.9-14in ³)
2	230-350cc (14-21in ³)
3	350-500cc (21-30.5in ³)

Rotary Drive 12 & 24v (specify)

Type	Displacement
1*	11,000kg (24,000lb)
2	20,000kg (44,000lb)

* 12v only

2. Core Pack Selection

The core pack is the electronics package for the autopilot which includes the course computer, compass and feedback unit (X-30 & X-SOL only).

There are three core packs available, and these are specified depending on the drive unit type selected in stage 1 -

Core Packs

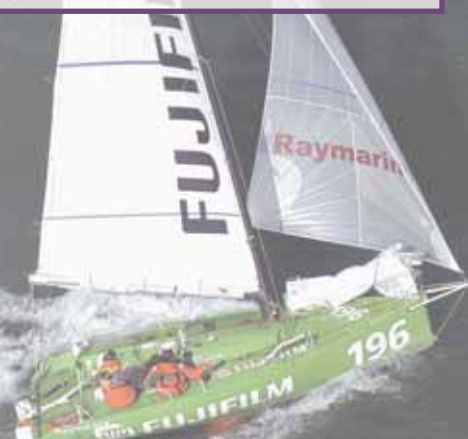
Type	Voltage	Drive Current	Drives
X-10	12/24v	10amps	Type 1
X-30	12/24v	30amps	Type 2 & 3
X-SOL	12/24v	-	Solenoid

3. Additional Control Unit Selection

If required, choose additional control units -

ST70	Full function control unit
ST6002	Compact control unit
ST7002	Large screen control unit
ST8002	Large screen unit with rotary control

Please call us to discuss your requirements and to ensure you select the correct package for your boat.



Turn to the back page for pricing and ordering info NOW!

RAYMARINE RAY49

DSC VHF Radio

The new Ray49 is a compact, rugged, submersible (IPX7) VHF radio with easy-to-use rotary controls for volume, squelch and menu operation, a large 7-segment, backlight LCD display and the fistmike includes integrated channel controls and an inbuilt speaker. The receiver offers excellent noise rejection and best-in-class audio output. Features four scan modes and programmable scanning.

KEY FEATURES

- Class D DSC - distress key transmits GPS position and a digital mayday
- NMEA0183 input for chartplotter position polling
- Programmable Scanning, dual and Tri Watch
- Quick Access channel 16/9 Key
- NOAA Weather Alert (US only)
- External loudspeaker option
- Available in gray or white
- Optional flush mount kit



SUPPLIED WITH

Radio, microphone, sun cover, mounting bracket, power/speaker/data cable

RAYMARINE RAY240E

Modular DSC VHF Radio

Modular multi-station system with separate transceiver unit that can be mounted out of sight, with only the waterproof handset and remote loudspeaker on show. Each handset provides full VHF and DSC functionality plus intercom facility between stations.

KEY FEATURES

- Full function alphanumeric keypad
- Programmable scan and tri-watch
- Loudspeaker with on/off switch and volume control
- Optional fog horn/loudhailer

SUPPLIED WITH

One handset, loudspeaker, transceiver unit, cables



RAYMARINE 33STV

Satellite TV Antenna System

The 33STV makes satellite TV reception available to boats as small as 20ft in length. 33STV is HD compatible and comes standard with the new Multi-satellite Interface Module which conveniently switches the system across 3 satellites automatically, providing uninterrupted channel surfing just like a home satellite TV system. The antenna control unit can connect with up to 6 onboard satellite receivers via USB.

KEY FEATURES

- High performance compact antenna
- Only 14in diameter, weighs less than 4.5kg
- Channel Surf without Delay - Fast Tracking
- Built-in HD Module
- Wide Power Supply Range: DC 9V~ 31V
- Easy & Simple Installation
- NMEA 0183 GPS Interface

ALL MODELS SUPPLIED WITH

Antenna, Antenna Control Unit. You will need to purchase and activate a DVB compatible satellite TV receiver with the provider of your choice and provide a television monitor or other suitable video display



RAYMARINE 37STV

Satellite TV Antenna System

If you want the benefits of satellite TV onboard, but you've always thought your boat was too small, then the 37STV system is the solution, which will fit on most boats 25-40ft in length.

KEY FEATURES

- All the key features in a small boat package
- Footprint of only 14.5in, weighs only 8.6kg
- Watch on TV, monitor, G Series or E Series display
- Engineered for the harshest marine environments
- Quickly acquires signals from all DVB compatible service providers



RAYMARINE 45STV & 60STV

Satellite TV Antenna System

For DVB satellite TV receivers, the compact, fully automatic stabilised antenna provides uninterrupted reception in almost any conditions. It quickly identifies compatible DVB satellites using a unique Wide Range Search algorithm. Highly accurate satellite tracking at sea is achieved using Dynamic Beam Tilting technology, ensuring a clear picture in the most challenging conditions.

KEY FEATURES

- 45STV footprint only 19.2in, weight is only 14kg
- 23.5in 60STV for vessels of 50ft and above offers greater signal range and improved reception
- Watch on TV, monitor, G Series or E Series display
- Dual LNB Design - watch the weather at the helm while others watch TV down below
- Supports multiple receivers



RAYMARINE RAY55E

DSC VHF Radio

The Ray55E features rotary controls for volume, squelch and menu operation and an extra large LCD display. The fistmike includes integrated channel controls and an inbuilt speaker. The Ray55E is also expandable to 2 stations with full duplex intercom capability using the optional Raymic Full Function Handset.

KEY FEATURES

- Position, COG & SOG display via NMEA input
- Chartplotter position polling
- Favourite channel softkeys
- Dual Channel Display shows active and stand by channel simultaneously
- All Scan, Saved (Memory) Scan, Priority All Scan and Priority Saved Scan
- Submersible (IPX7) rugged housing
- Low profile bezel, optional flush mount kit

ALSO AVAILABLE

- Ray218 - Adds an inbuilt 30 Watt Hailer with "Listen Back" capability and automatic foghorn to the features of the Ray55E

SUPPLIED WITH

Radio, microphone, sun cover, mounting bracket, power/speaker/data cable



RAYMARINE RAYMIC

Remote Station Handset

Add full function remote control of the Raymarine Ray55 and Ray218 VHF radios with the Raymic remote station handset.

KEY FEATURES

- Full control of all features and functions of the Ray55 and Ray218 VHF radios
- Extra large dot matrix LCD
- Speaker microphone
- Submersible (IPX7 Standard)
- Full duplex intercom between stations

SUPPLIED WITH

Handset, cradle



RAYMARINE ST70

Instrument System

The ST70 Multifunction Colour display offers a different way of visualising instrumentation and navigation data. Designed for simple setup and extensive user customisation, ST70's capabilities include depth, speed, wind, navigation data, autopilot status, engine monitoring and more.



**HOT
PRODUCT**

ST70 systems use Raymarine's SeaTalkng Next Generation data bus which enables simple interconnection of multiple ST70 instruments, transducers and NMEA2000 compatible devices as well as existing Raymarine SeaTalk and SeaTalk2 systems.

To build a complete ST70 instrument system choose from the complete line of ST70 transducer pods and SeaTalkng networking components (sold separately.)

KEY FEATURES

- Fully customisable displays for depth, speed, wind, navigation data, engine data and more
- Full colour graphical displays, virtual analogue displays and histograms
- 8 user defined instrument data pages
- 16 screen layout options for each data page
- Eleven languages available
- High contrast sunlight viewable TFT colour display with wide viewing angles
- Day and Night mode colour palettes

- Fully waterproof to CFR-46 standard
- Easily retrofitted to ST60 surface mount installations
- Compatible with SeaTalk, SeaTalk2, SeaTalkng and NMEA 2000 devices
- Intelligently converts first-generation SeaTalk data to SeaTalkng

SUPPLIED WITH

- Snap-on sun cover, surface and flush mounting kits, SeaTalkng backbone cable, SeaTalk adapter cable

RAYMARINE ST60+ GRAPHIC

Multifunction Dot-Matrix Display

Versatile multifunction dot matrix display that can show any data on the SeaTalk network bus.



KEY FEATURES

- Intuitive Chapter and Page control keys
- Up to seven user configurable favourites pages
- View and control multiple data sources
- Large digit, graphical or multi-line format displays
- Single, split or quad screen displays

RAYMARINE ST60+ COMPASS

Compass System

KEY FEATURES

- Heading
- Average course
- Course Over Ground*
- Man overboard display
- Keypad heading alignment



RAYMARINE ST60+ SPEED

Speed/Log System

KEY FEATURES

- Boat speed 0-60kts
- Log & Resettable Trip
- Sea temperature
- Pilot Status display*
- Max & avg speed, VMG*
- Speed over ground*
- Stopwatch/lap timer
- Race start timer



RAYMARINE ST60+ DEPTH

Depth System

KEY FEATURES

- Water depth 0.8-180m
- Depth trend indicator
- Transducer, waterline or keel offset
- Pilot status display*
- Shallow, deep & anchor alarms



RAYMARINE ST60+ WIND

Wind System

KEY FEATURES

- Apparent wind speed
- True wind speed*
- True wind direction*
- Max wind speed alarm
- Beaufort, knots, m/sec
- Master or repeater



*Requires relevant data present on SeaTalk

RAYMARINE ST70+

Instrument System

The ST70+ system is designed primarily for sail and powerboats over 12m (40ft). The 6.5in wide angle, high-visibility displays are ideal where information is viewed at a distance, such as on the mast or on a large bridge, or if you simply want to view information in a larger format at the nav station or helm.



The sunlight-viewable displays are operated by dedicated keypads - there's a push-button only pilot keypad for sailboats, a rotary pilot for powerboats and a combination push button and rotary instrument keypad for complete control of all instrument features.



KEY FEATURES

- Superior visibility with high quality graphics
- Night and Inverse modes for low light conditions
- Create a system with SeaTalkng sensors for wind, speed, depth and NMEA2000 engine systems
- User defined instrument pages
- 25 screen layout options with analogue, digital and historical displays
- Configure as an instrument or autopilot display

RAYMARINE ST60+ TRIDATA

Combi System

KEY FEATURES

- Combined Speed and Depth multi-line display
- Boat speed 0-60kts
- Water depth 0.8-180m
- Speed over ground
- Automatically switches depth sensors when depth sounder module is detected, to avoid interference



RAYMARINE ST40

Entry Level Instrument System

Simple and elegant, with large digit LCD displays. Optional snap-on bezels, three levels of back lighting and waterproof to USCG-CFR 46. SeaTalk compatible, all necessary transducers are included.



Depth



Bidata



Wind



Compass

Turn to the back page for pricing and ordering info NOW!

RAYMARINE RAYTECH RNS 6.1

PC Navigation Software Suite

Raytech RNS V6.1 is a powerful PC based electronic charting system supporting raster, vector and aerial photo cartography. Plan waypoints and routes, transferring them between your PC and Raymarine plotters and combi displays. With a customisable user interface, SeaTalk/hs network support, an inbuilt worldwide tides and currents database and the option to download weather forecasts from raymarine.com just some of the features of this system you can unlock the real potential of your onboard PC.

NEW IN V6.1 FEATURES

- Seamless integration with Raymarine E-Series and G-Series displays via SeaTalk/hs and Ethernet - access charts, transfer waypoints and routes
- 3D Chartplotting using Navionics Platinum and Platinum+ Multidimensional charts
- Navionics Silver, Gold, Gold + and HotMaps Premium chart compatibility
- Support for Navionics USB Multicard Reader for access to Navionics charts on CompactFlash
- AIS Target tracking via NMEA0183 or SeaTalk/hs
- Support for DSM400 HD Digital Sounder Module
- HD and Super HD Digital Radar Compatibility
- Record, pause and play-back HD Digital fishfinder display from your networked sounder module

KEY FEATURES

- Customisable user interface - organise navigation data into easy to use pages
- Download and animate weather forecasts from the Raymarine website
- Navigation and tactical tools - monitor wind, lay lines, other vessels and weather to enable you to make better decisions on the race course
- DataTrak time-based graphs - monitor wind trends and compare instrument data and the boat's performance
- Polar data collection and analysis - calculate your optimum speed and heading under varying conditions
- Route optimisation - identify the ideal route based on ocean current, wind speed and direction and your boat's polar characteristics

MINIMUM SYSTEM REQUIREMENTS

- Pentium 4 processor (or equivalent)
- 512Mb RAM
- Windows XP/Vista
- CD-ROM drive (if installing software from CD-ROM)
- Monitor capable of displaying 1024 x 768 resolution, 16 bit colour

OPTIMUM SYSTEM REQUIREMENTS

- Intel Core 2 Duo processor (or equivalent)
- 2Gb RAM or higher.
- NVIDIA GeForce FX graphics card or greater
- Windows XP/Vista

ALSO REQUIRED (DEPENDING ON SYSTEM)

- Serial port - if connecting to NMEA or SeaTalk.
- Ethernet port - if using SeaTalk/hs
- PCMCIA port - if connecting to a Pathfinder hsb2 system using a PCMCIA to hsb2 adaptor
- USB2 port - if connecting to a Pathfinder system using a USB2/PCMCIA adaptor

COMPATIBLE CHARTS

- Navionics Gold, Platinum and Hot Maps
- C-Map NT+ C-Cards (requires USB C-Card reader)
- C-Map NT+ PC charts
- MapTech raster charts
- Softchart raster charts
- NDI Canadian charts

SUPPLIED WITH

RayTech RNS v6.1 Software on CD-ROM, Software License Key, Handbook and Installation Guide, Navionics Multicard Chart Reader, Complete USA Raster Charts on DVD-ROM, SoftChart Coastal Planning Charts on CD-ROM, C-MAP NT+ Worldwide Planning Charts (Charts install automatically with RayTech RNS v6.1)



Radar/Chart Overlay



AIS Targets



3D Chart Display

RAYMARINE RAYTECH PLANNER

PC Navigation Planner Software



Limited version of RayTechRNS 6.1 software designed for planning and transferring waypoints and routes, between your PC and Raymarine chartplotters and multifunction displays

KEY FEATURES

- PC navigation software for the "at home" navigator
- Create and plan routes with a simple point and click interface
- Features built in planning charts for the entire world
- Compatible with a wide range of chart formats including, Navionics Gold, Platinum, C-MAP NT+, and raster charts
- Based on the powerful RayTechRNS 6.1 software

NAVIONICS CARD READER

Multichart Card Reader

Use in conjunction with your RayTech RNS 6.1 or RayTech Planner Software to read your Gold, Gold+, Platinum or Hot Maps Premium charts on your PC. Transfer waypoint and route data between your PC and compatible navigation systems like the A65, C Series, E Series and G Series.



RAYMARINE KEYBOARD

USB Navigation Keyboard



The USB Navigation Keyboard takes advantage of the powerful RayTech RNS interface through dedicated navigation buttons and intuitive softkeys. A built in cursor and rotary knob are standard, along with a convenient alphanumeric keypad. Designed to be both "built-in" and handheld, the USB Navigation Keyboard's mounting cradle mounts flush in the dash and allows the keyboard to be removed for convenient hand held operation.

KEY FEATURES

- Full control of Raytech software
- Dedicated control keys, alphanumeric keypad, rotary control, cursor pad and softkeys
- Can be used as a fixed or handheld unit

Handheld Navigation

GARMIN eTREX H

Handheld GPS

Waterproof WAAS handheld with an ultra-accurate, high sensitivity receiver in a 100x50mm package that weighs only 170g. Up to 18hrs battery life.

KEY FEATURES

- 500 waypoints with graphic icons
- TracBack™
- Animated graphics

ALSO AVAILABLE

- **eTrex** - basic model
- **eTrex Summit** - altimeter and electronic compass
- **eTrex Legend** - World city database, 1Mb internal memory, chartsource compatible



GARMIN GPS72H

Handheld GPS

A new, improved version of the popular GPS72, this rugged GPS features a high sensitivity receiver for faster signal acquisition. WAAS enabled, waterproof and it floats!

KEY FEATURES

- 500 waypoints, 50 routes
- Alarms
- Trip computer
- Auto track log, 10 saved tracks
- Course and speed filtering
- Built-in celestial tables
- Available as marine bundle pack with marine mounting bracket, 12v cigarette lighter cable and carrying case



GARMIN GPSMap76Cx & 76CSx

Colour Handheld GPS

- 115Mb memory
- Autoroute basemap
- Marine Point database
- Chartsource compatible
- Up to 30 hours battery life
- Barometric altimeter and electronic compass (GPSMap76CSx)



GARMIN GPSMap60Cx & 60CSx

Handheld GPS Chartplotter

- Rugged design, serial and USB interfaces
- Inbuilt international basemap
- Auto-routing capabilities
- 56Mb memory
- Up to 30 hours battery life
- Barometric altimeter and electronic compass (GPSMap60CSx only)



GARMIN DAKOTA 10 & 20

2.6in Handheld Touchscreen Chartplotter

Entry-level touchscreen handheld with high-sensitivity GPS with HotFix™ satellite prediction, and a worldwide basemap. Dakota makes outdoor navigation easy with a tough, sunlight-readable, 2.6 inch colour touchscreen display and an easy to use interface. Durable and waterproof, Dakota is built to withstand the elements.

KEY FEATURES

- 20hrs battery life (2 x AA)
- 850Mb memory
- USB interface
- 1000 waypoints, 50 routes
- 10,000 track points, 200 saved tracks
- Automatic turn by turn routing on roads
- Internal basemap
- Optional mapping for detailed roads
- Chartsource and BlueChart g2 Vision compatible
- Supports geocaching GPX files
- Inbuilt hunting/fishing calendar, sun and moon information
- Custom points of interest
- **Dakota 20** - microSD™ card slot, tilt compensated 3-axis compass, barometric altimeter, wireless data transfer, also accepts OS mapping



GARMIN OREGON 450 & 550

3in Handheld Touchscreen Chartplotter

Rugged, lightweight and waterproof to IPX7, the Oregon range features a high sensitivity WAAS GPS, an easy-to-use interface and is ideal for both marine and land use with turn by turn routing on roads, a barometric altimeter and a tilt-compensated 3-axis electronic compass.

KEY FEATURES

- 16hrs battery life (2 x AA)
- 850Mb memory
- USB and NMEA0183 compatible
- Wireless data transfer
- **NEW Oregon450** - 1000 waypoints, 50 routes
- **Oregon550** - 2000 waypoints, 200 routes
- 10,000 track points, 20 saved tracks
- Internal basemap
- Chartsource and BlueChart g2 Vision compatible
- Supports geocaching GPX files
- Inbuilt hunting/fishing calendar, sun and moon information and tide tables
- **Oregon450t & 550t** - Preloaded with topographic charts
- **Oregon550/550t** - 3.2 megapixel camera with autofocus, 4x digital zoom



GARMIN NUVI 550

Colour Touchscreen Multi-Purpose Navigator

Combination in-car sat-nav and handheld GPS/Chartplotter. Intuitive touchscreen user interface offers four user modes with customised features for driving, boating, walking and cycling. Ideal for the occasional boating enthusiast who wants one navigational device for all uses, it fits in your pocket with a rechargeable li-ion battery that packs in 8 hours of power. Comes with sophisticated NAVTEQ™ mapping data and a waterproof card slot to load different types of mapping.

KEY FEATURES

- Rugged and waterproof
- High-sensitivity GPS and HotFix™ satellite prediction
- European street maps with topographic shaded contours
- Wherigo™/geocaching player
- European speed camera database
- Optional live traffic alerts
- Plug in optional topographic mapping
- Voice-prompted directions via Bluetooth
- Garmin Lock™ anti-theft protection system
- Built-in compass
- Third-party travel guides
- World clock, currency and measurement converter, calculator, picture viewer



GARMIN GPSMap620

5.2in Colour Touchscreen Marine/Automotive Chartplotter

Full-featured marine chartplotter has a high resolution 800x400 pixel WVGA touchscreen and features an automotive mode when loaded with optional City Navigator NT road charts. Comes preloaded with a worldwide satellite basemap of shorelines and other surface features. In marine mode provides 3D "mariner's eye view" above the waterline, "fish eye view" below the waterline and Auto Guidance technology that searches chart data to suggest the best passage with optional BlueChart g2 Vision data.

KEY FEATURES

- Turn-by-turn voice prompts
- 1500 waypoints, 50 routes (marine mode)
- 1000 waypoints, 10 routes (automotive mode)
- 10,000-point auto track log
- AIS and DSC compatible
- Optional remote antenna
- Serial and USB interfaces
- Inbuilt tide and celestial tables
- Optional flush mount kit



SUPPLIED WITH

Preloaded worldwide satellite basemap, marine mount with integrated vehicle power cable, lithium-ion battery pack, AC charger, USB cable, protective cover

Turn to the back page for pricing and ordering info NOW!

Electronic Cartography

BLUECHART g2 & g2 VISION

UK, Ireland, France Large



BLUECHART g2 & g2 VISION

Mediterranean Large



BLUECHART g2 & g2 VISION

Nordic Large



BLUECHART g2 & g2 VISION

Canada West Large



BLUECHART g2 & g2 VISION

Canada East Large



BLUECHART g2 & g2 VISION

USA West Coast Large



BLUECHART g2 & g2 VISION

USA East Coast Large



BLUECHART g2 & g2 VISION

USA Gulf of Mexico Large



BLUECHART g2 & g2 VISION

USA Alaska Large



BLUECHART g2 & g2 VISION

USA Great Lakes Large



BLUECHART g2 & g2 VISION

Caribbean Regular



BLUECHART g2 & g2 VISION

Australia Regular



BLUECHART g2 & g2 VISION

New Zealand Regular



BLUECHART g2 & g2 VISION

Asia East Regular



Please note that this is just a small selection of the full Bluechart coverage - please call us for assistance if the cruising area you require is not shown here.



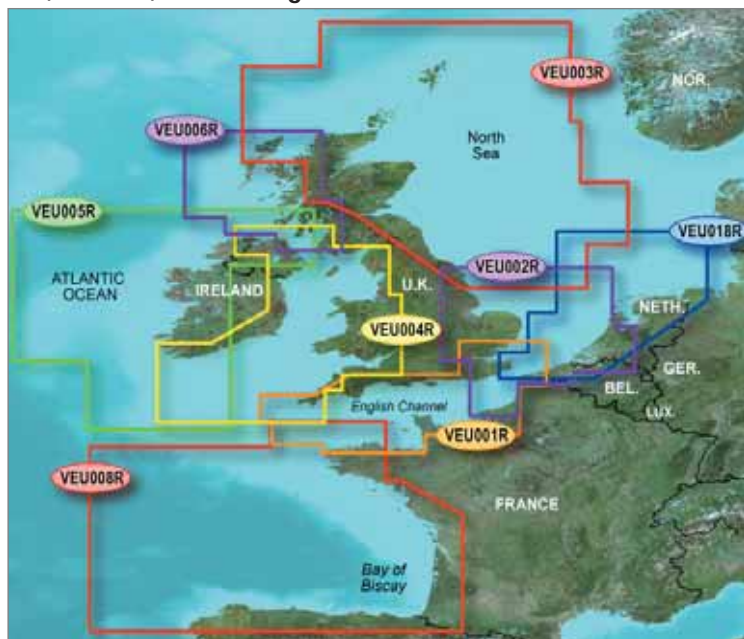
We accept most major credit and debit cards



Cartography, Chartplotters & Chartsounders

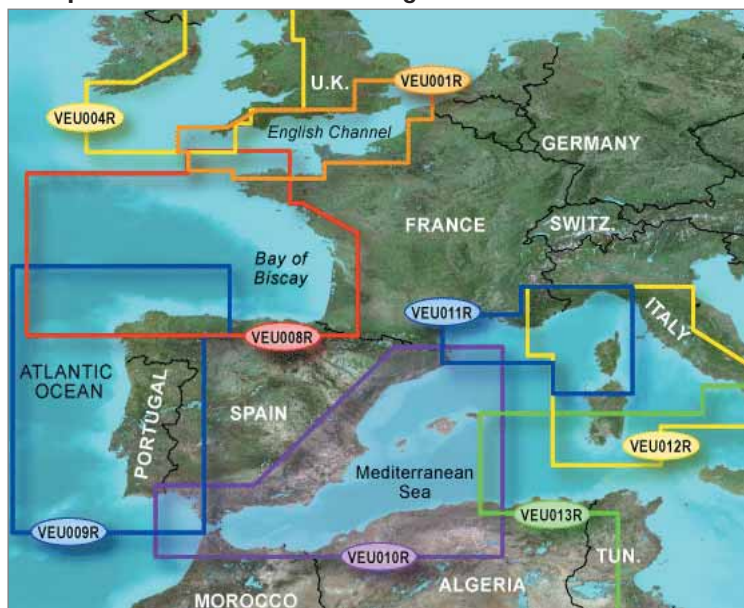
BLUECHART g2 & g2 VISION

UK, Ireland, France Regular



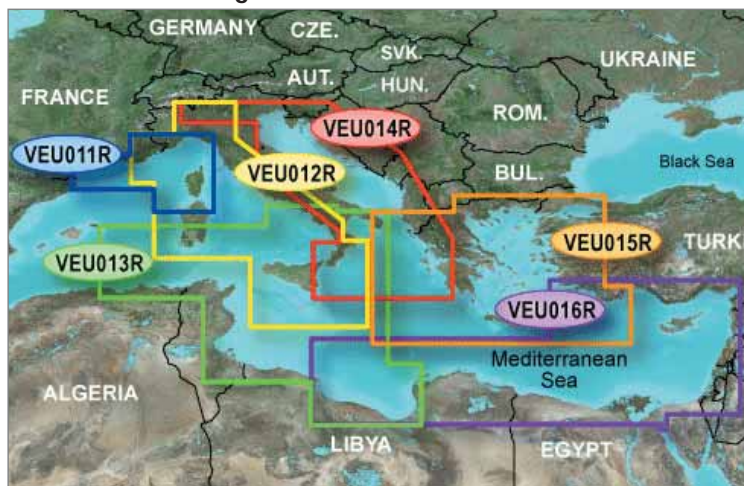
BLUECHART g2 & g2 VISION

Europe South Atlantic Coast Regular



BLUECHART g2 & g2 VISION

Mediterranean Regular



GARMIN GPSMap4x1/4x1S

4in Colour Chartplotter/Fishfinder

Available as a chartplotter (Map4x1) or a combination chartplotter/fishfinder (Map4x1S), this unit features an ultra-bright 4in colour QVGA display. The GPSMap4x1S comes with powerful dual frequency or dual beam sonar to clearly paint depth contours, fish targets, structure, etc. It's also CANet capable, allowing sounder data to be shared with other plotter displays on your boat.



KEY FEATURES

- **GPSMap421** - Satellite-enhanced 3D worldwide basemap
- **GPSMap431** - Also preloaded with US inland lakes maps
- **GPSMap441** - Also preloaded with US coastal maps
- **GPSMap451** - Also preloaded with UK coastal maps
- **S** models include dual frequency or dual beam sounder
- Upgradeable to BlueChart g2 Vision cartography with optional plug in card
- Simple user interface for easy operation
- Simplify navigation with Auto Guidance
- Now NMEA2000 compatible

GARMIN GPSMap5x1/5x1S

5in Colour Chartplotter/Fishfinder

This chartplotter (Map5x1) or combination chartplotter/fishfinder (Map5x1S) offers all the features of the GPSMap4x1 series, but with a larger ultra-bright 5in colour QVGA display.



KEY FEATURES

- **GPSMap521** - Satellite-enhanced 3D worldwide basemap
- **GPSMap531** - Also preloaded with US inland lakes maps
- **GPSMap541** - Also preloaded with US coastal maps
- **GPSMap551** - Also preloaded with UK coastal maps
- **S** models include dual frequency or dual beam sounder

ALL MODELS SUPPLIED WITH

Internal GPS antenna (optional external antenna), unit cover, tilt/swivel mount, cables, transducers sold separately

Turn to the back page for pricing and ordering info NOW!

GARMIN GPSMap4000 SERIES

8.4in, 10.4in & 12.1in Colour Combination Displays

These powerful combi displays combine video-quality resolution and luminous colour with the latest sensor and data options. Worldwide satellite imagery enhances the standard vector basemap format, add the optional BlueChart Vision card for high-resolution aerial reference photos which help in navigating tricky harbours and channels or locating places such as marinas, fuel barges or restaurants. The g2 Vision plugin data card also allows the units to graphically depict a true 3D "mariner's eye" topside view or "fish eye" underwater navigation perspective.

KEY FEATURES

- **GPSMap4008/4208** - 8.4in 640x480 pixel VGA
- **GPSMap4010/4210** - 10.4in 800x600 pixel SVGA
- **GPSMap4012/4212** - 12.1in 1024x768 pixel XGA
- Worldwide satellite basemap
- **GPSMap4208, 4210 & 4212** - preloaded with US coastal maps
- Auto Guidance searches all the chart features to suggest the best known charted route for navigation
- Dual Bluechart g2 card slots
- 4000 waypoints, 50 routes, 300 waypoints/route
- **GPSMap4012/4212** - 2 video inputs for onboard cameras, 1 SVGA PC monitor output
- Anchor drag, arrival, off-course, shallow water, deep water, proximity waypoint, clock and battery alarms
- Inbuilt celestial tables for sun and moon calculations
- Add radar with optional **GMR** series digital antennas
- Radar/chart overlay and split screen modes
- MARPA target tracking
- Add sonar with optional **GSD21** analogue or **GSD22** digital remote sounder

SUPPLIED WITH

GPS 17 WAAS sensor, A/V cable, power/data cable, mounting bracket, unit cover, flush mount, bail mount



GARMIN GPSMap5000 SERIES

8.4in, 12.1in & 15in Touchscreen Colour Combination Displays

The GPSMap 5000 series features a radical touch-screen interface that makes navigation as easy as pointing your finger. The units are supplied with a worldwide basemap with high-quality satellite images in place of more traditional charts. For even more detail, you can add charts easily using the SD card slots. Keep watch on your engine room or other areas of your vessel by connecting a live video feed using the video input/output.

BlueChart g2 Vision charts add a whole new dimension of exceptional feature - 3D mariner's eye view or fish eye view provides you with a 3D perspective of map information, both above and below the waterline. High-resolution satellite images and aerial photographs help you orient yourself in unfamiliar areas. Auto Guidance creates a route that avoids shallow water, buoys and other obstacles.

KEY FEATURES

- All the features of the 4000 series combi displays
- Innovative touch-screen design
- Dual Bluechart g2 card slots
- Add radar with optional **GMR** series digital antennas
- Add sonar with optional **GSD21** analogue or **GSD22** digital remote sounder
- **GPSMap5008/5208** - 8.4in 640x480 pixel VGA
- **GPSMap5012/5212** - 12.1in 1024x768 pixel XGA
- **GPSMap5015/5215** - 15in 1024x768 pixel XGA
- **GPSMap5208, 5212 & 5215** - preloaded with US coastal maps

SUPPLIED WITH

GPS 17 WAAS sensor, A/V cable, power cable, mounting bracket, unit cover, flush mount, marine grommet kit, NMEA2000 drop cable, NMEA2000 T-connector & terminator kit, NMEA2000 power cable, NMEA0183 cable



GARMIN HD DIGITAL RADAR

High Definition Digital Radar

The Garmin HD digital radomes and open array antennas offer high-powered Digital Signal Processing for sharper radar imagery and improved target separation. Automatic pulse optimisation matches pulse width and repetition rate with the selected range.



Self-contained signal processing provides a more precise, easy to read signature. Data is transmitted over the Garmin Marine Network to any compatible Garmin display.

KEY FEATURES

- Narrow beamwidth
- MARPA target tracking (10 targets)
- 24/30rpm dual rotation on open array antennas
- Minimum range - 20m



Tech info

Garmin Radar Scanners

When ordering your radar system you'll need to specify the antenna you require -

Part No.	Size	Power	Beam	Type	Range
GMR 18	18in	4kW		RD	36nm
GMR 18HD	18in	4kW	5°	RD	36nm
GMR 24HD	24in	4kW	3.6°	RD	48nm
GMR 404	48in	4kW	1.8°	OA	72nm
GMR 406	72in	4kW	1.1°	OA	72nm
GMR 604xHD	48in	6kW	1.8°	OA	72nm
GMR 606xHD	72in	6kW	1.1°	OA	72nm
GMR 1204xHD	48in	12kW	1.8°	OA	72nm
GMR 1206xHD	72in	12kW	1.1°	OA	72nm

RD - Radome Antenna (enclosed)

OA - Open Array

HD - High Definition

GMR404 & 406 require pedestal unit (sold separately)

GARMIN GC10

Marine Camera

Durable and waterproof, the Garmin GC 10 was built to brave the elements. With a small and unobtrusive design in a rugged housing that makes it easy to mount almost anywhere on your boat.



KEY FEATURES

- Can be used with on-board TV, video monitors or chartplotters with video input
- No need to add separate hardware to view feed
- Standard-image and reverse-image models
- Automatic infra-red functionality

GARMIN GFS10

Fuel Sensor

Add fuel tracking to your Garmin combi and optimise your fuel economy.

KEY FEATURES

- 10-22v
- Unlike other fuel sensors it will measure fuel level when connected to an existing analogue fuel gauge or resistive fuel tank sensor
- Flow rate 2 - 50 Gallons per hour per engine
- Data transfer via CANet or NMEA 2000



We accept most major credit and debit cards



Touchscreen Combi Displays

GARMIN GPSMap6000 SERIES

8.4 & 12.1in Colour Combination Displays

The next evolution in Garmin's series of full-featured marine products, the 6000 series brings unprecedented speed to your vessel with Garmin G Motion™ technology - blazing-fast map redraw and refresh rates offers near real-time data to guide you. Whether you're in a crowded harbour or in uncertain weather, you'll have the confidence to navigate with the 6000 series as your guide. Compatible with an optional remote for added flexibility and with a sleek and stylish design that was built to brave the elements, they look great in any position on the boat.

The 6000 series features a worldwide basemap with high quality satellite images in place of more traditional charts, plus you can easily add charts with the dual card slots. Optional BlueChart g2 Vision charts add a whole new dimension of exceptional features to your chartplotter - MarinerEye view and FishEye view provide you a 3-dimensional perspective of map information, both above and below the waterline. High-resolution satellite images and aerial photographs help you orient yourself in unfamiliar areas. Auto Guidance technology searches through all relevant charts to create a route you can actually follow - one that avoids obstacles, shallow water, buoys and other obstructions.

Keep tabs on your engine room or other area of your boat with a live video feed using the video input and output options. The 6000 series easily connects to your network so you can interface with additional displays and add remote sensors, cameras and more. Once connected, you can share information between the 6000 series and other chartplotters on your boat. You can also add high-powered radar, sonar and XM satellite weather and radio to your system.

KEY FEATURES

- **GPSMap6008/6208** - 12.1in 1024x768 pixel XGA
- **GPSMap6012/6212** - 15in 1024x768 pixel XGA
- Worldwide satellite basemap
- **GPSMap6208 & 6212** preloaded with US coastal maps
- Add radar with optional **GMR** series digital antennas
- Radar/chart overlay and split screen modes
- MARPA target tracking
- Add sonar with optional **GSD21** analogue or **GSD22** digital remote sounder
- 5000 waypoints, 100 routes, 50,000 track points, 50 saved tracks
- 4 NMEA 0183 inputs, 2 NMEA 0183 outputs, 2 video inputs for onboard cameras, 1 PC monitor video output

- Anchor drag, arrival, off-course, shallow water, deep water, proximity waypoint, clock and battery alarms
- Inbuilt celestial tables for sun and moon calculations
- Tide tables
- AIS compatible

SUPPLIED WITH

GPS 17x NMEA 2000 with pole, flush and under deck mount adapters, front cover, power cable, video cable, NMEA 0183 cable, NMEA 2000 drop cable, 10m NMEA 2000 backbone cable, NMEA 2000 power cable, NMEA 2000 T-connector and terminator kit, bail mount, flush mount kit, marine grommet kit



GARMIN GPSMap7000 SERIES

12.1 and 15.5in Touchscreen Colour Combination Display

Put the power of Garmin's next-generation marine navigator right at your fingertips with the GPSMap7000 Series. The 7000 series brings all the features, all the power and speed of the 6000 series but with innovative touchscreen control and the choice of larger displays. The 7000 Series comes standard with a worldwide, satellite-enhanced basemap as well as video-quality resolution on an impressive 12.1in or 15.5in XGA display. The 7000 Series also provides total system integration - allowing support for the addition of sonar, radar, weather and more. For additional enhanced features, you can add the optional BlueChart g2 Vision card.

KEY FEATURES

- **GPSMap7012/7212** - 12.1in 1024x768 pixel XGA
- **GPSMap7015/7215** - 15in 1024x768 pixel XGA
- Dual Bluechart g2 card slots
- Worldwide satellite basemap
- **GPSMap7212 & 7215** preloaded with US coastal maps
- Auto Guidance searches all the chart features to suggest the best known charted route for navigation
- AIS compatible
- Add radar with optional **GMR** series digital antennas
- Radar/chart overlay and split screen modes plus MARPA target tracking
- Add sonar with optional **GSD21** analogue or **GSD22** digital remote sounder
- 5000 waypoints, 100 routes, 50,000 track points, 50 saved tracks
- 4 NMEA 0183 inputs, 2 NMEA 0183 outputs
- **GPSMap7012/7212** - 2 video inputs for onboard cameras, 1 PC monitor video output
- **GPSMap7015/7215** - 4 video inputs for onboard cameras, 1 PC monitor video output, 1 PC monitor video input
- Anchor drag, arrival, off-course, shallow water, deep water, proximity waypoint, clock and battery alarms
- Inbuilt tide tables and celestial tables for sun and moon calculations

SUPPLIED WITH

GPS 17x NMEA 2000 with pole, flush and under deck mount adapters, front cover, power cable, video cable, NMEA 0183 cable, NMEA 2000 drop cable, 10m NMEA 2000 backbone cable, NMEA 2000 power cable, NMEA 2000 T-connector and terminator kit, bail mount, flush mount kit, marine grommet kit



Turn to the back page for pricing and ordering info NOW!

Fishfinders & Instruments

GARMIN Fishfinder90

4in Mono Fishfinder

Compact dual beam fishfinder combines ease of use with Garmin's exclusive fishfinder technology. The 45° beam angle gives a greater field of view.

KEY FEATURES

- 80/200kHz
- Max depth 200m (600ft)
- 100 watts RMS
- See-Thru function separates fish from thermoclines
- Alarms for fish size and shallow water
- Fish ID with optional fish depth numbers



GARMIN Fishfinder140

4.75in Mono Fishfinder

The Fishfinder140 adds a 8.4 x 8.4cm (4.75in diagonal) 4-level greyscale display to the features of the Fishfinder 90. The keypad layout is simple and intuitive and the unit is easy to operate.



KEY FEATURES

- 80/200kHz, max depth 200m (600ft)
- 100 watts RMS
- See-Thru function separates fish from thermoclines
- Alarms for fish size and shallow water
- Fish ID with optional fish depth numbers

FF90 & FF140 SUPPLIED WITH

80/200kHz transom transducer, quick release mount

GARMIN Fishfinder300C

3.5in Colour Fishfinder

Ideal for recreational anglers who fish primarily in freshwater lakes. With improved user interface plus UltraScroll™ for fast screen updates. Dual beam transducer provides excellent coverage in shallow waters.

KEY FEATURES

- Super bright, 240x320 pixel QVGA colour display
- 150 watts (RMS) 1200 watts (peak to peak)
- Auto Gain adjusts sonar sensitivity automatically
- See-Thru® technology shows weak and strong returns simultaneously
- Round flasher display mode
- White line
- 2X and 4X automatic and manual zoom
- Battery voltage indicator
- NMEA0183 output

SUPPLIED WITH

80/200kHz transom transducer, power/data cable, mounting bracket, flush mount hardware



GARMIN Fishfinder160C

4.75in Colour Fishfinder

Dual beam fishfinder with a sunlight-viewable colour display. With all the features of the Fishfinder140, the 160C has a higher power output (150w RMS) giving a maximum depth of up to 300m (900ft).



KEY FEATURES

- 80/200kHz, max depth 300m (900ft)
- 150 watts RMS
- See-Thru function separates fish from thermoclines
- Alarms for fish size and shallow water
- Fish ID with optional fish depth numbers

SUPPLIED WITH

80/200kHz transom transducer, quick release mount

GARMIN Fishfinder400C

4in Colour Fishfinder

High performance with an ultra-bright QVGA colour display and a simple interface making it easy to locate fish in both freshwater and saltwater. Available with a choice of dual beam or dual frequency transducers.



KEY FEATURES

- 400 watt (RMS) dual beam, max depth 300m
- 500 watt (RMS) dual frequency, max depth 500m
- CANet compatible - share sonar data with compatible Garmin combi displays
- UltraScroll™ screen updates at live-action speeds

SUPPLIED WITH

Swivel mounting bracket, power/data cable, dual beam or dual frequency transducer, protective cover

GARMIN GMI 10

Digital Marine Instrument Display

Radical colour multifunction display that integrates with the Garmin Marine Network and other sensors via NMEA2000 and NMEA0183. By showing data from multiple remote sensors on one display, the GMI 10 offers a streamlined approach to marine instrumentation. Display data such as depth, speed, water and air temperature, wind speed/direction, fuel flow rate, engine data, fuel level and more, depending upon what sensors are connected. The GMI 10 supports more than two dozen standard NMEA2000 and more than 20 NMEA0183 data sentences and can also connect to any Garmin Marine Network chart-plotters with an NMEA 2000 port.

KEY FEATURES

- Clear, bright 320 x 240 pixel colour QVGA display
- Flexible, expandable system suits all boat sizes
- **GWS 10** wind sensor with barometric pressure and air temperature
- **GPS 17x** 12-channel WAAS GPS sensor
- **GFS 10** fuel sensor
- NMEA2000 and NMEA0183 compatible
- Waterproof
- Flush mountable



SUPPLIED WITH

Display, mounting hardware, sun cover, power/NMEA 0183 cable, NMEA 2000 power cable, NMEA 2000 drop cable, NMEA 2000 tee & terminator kit



GWS 10 Wind Sensor



GPS 17x GPS Sensor



GFS 10 Fuel Sensor



We accept most major credit and debit cards



Autopilot, AIS & VHF Radios

GARMIN GHP 10

Powerboat Autopilot System

The GHP 10 marine autopilot adds a whole new level of versatility to the Garmin marine line. This breakthrough unit gives power boat users an easy to use autopilot system to rely upon for auto-guided navigation.



The GHP 10 is controlled using the GHC 10. This control unit communicates with the autopilot system via a NMEA2000 bus, so autopilot heading data can easily be shared with other devices. Up to three GHC 10 controllers can be interfaced with a single GHP 10, ideal for boats with multiple helm stations.

The simple, intuitive interface of the GHC 10 gives boaters the confidence and security of controlling the heading of the boat at the press of a key. And as a safeguard, a dedicated "Standby" key allows you to instantly place the autopilot in standby to keep it from re-engaging.

The GHC 10 communicates with the GHP 10 autopilot system via a NMEA2000 bus, so autopilot heading data can easily be shared with other devices. It can also communicate with a chartplotter for GPS-enabled route guidance over NMEA2000 or NMEA0183.



KEY FEATURES

- Suitable for all types of hydraulically steered power boats - inboard, outboard, stern-drive, diesels
- No rudder feedback unit required
- Gyro-stabilised compass
- Patented Shadow Drive™ technology automatically disengages autopilot if the helm is turned and re-engages when a steady course is held
- Hold position against wind, waves or hcurrent
- Can steer in reverse
- Bright 320 x 240 pixel QVGA colour LCD display

HYDRAULIC REVERSING PUMPS AVAILABLE

- 1.2L (up to 160cc, 10in³)
- 2.0L (160-400cc, 10-24in³)
- 2.1L (160-400cc, 10-24in³), engine size 400hp+

SUPPLIED WITH

GHC 10, Course Computer, Gyro Compass, Shadow drive, CCU/ECU interconnect cable, buzzer, ECU power cable, NMEA2000 drop cable, NMEA2000 T-connector

GARMIN VHF 100i & VHF 200i

Fixed DSC VHF Radios

The Garmin VHF 100i and 200i range of VHF radios feature a large backlit 3.2in display, rotary knobs for volume, squelch and channel selection, up to 25W transmission power and provide full Class D DSC capability.

KEY FEATURES

- Locate and monitor up to three other boats with position tracking capability
- 200i - Two-way hailer functionality when connected to compatible horn speaker
- 200i - Automatic and manual foghorn signals and adjustable base fog frequencies
- LOCAL receiver mode improves performance in busy port environments
- Ergonomic fist mic with built-in speaker
- Programmable international channels
- ATIS support and private channel customisation options
- 200i - Multi-language user interface
- 200i - Supports GHS 10i full-function wired second station
- Automatic power-on when boat starts
- Waterproof to IPX7 standard
- Easy front flush-mounting option
- NMEA 0183 compatible
- 200i - NMEA 2000 compatible



SUPPLIED WITH

Fistmike, power cable, hailer/NMEA cable (200i), mounting bracket, flush mount gasket, protective cover

GARMIN VHF 300i & VHF 300i AIS

Fixed DSC VHF Radios

Multi-station Class D DSC VHF transceiver gives you flexibility and convenience of operation and installation. Comes with a two-way hailer system and a patent-pending voicemail feature that lets you pre-record a 15-second message and deliver the message to any DSC radio. Replay the last 90 seconds of any incoming voice transmission at the touch of

a button. Listen via the supplied 4in active speaker with volume control, the handset's inbuilt speaker or third-party passive speakers. The VHF 300i AIS also features an inbuilt dual channel AIS receiver which simultaneously receives Class A and Class B AIS signals for additional safety when at sea. NMEA 0183 and 2000 compatible.



KEY FEATURES

- Space-saving black box configuration
- 30w hailer when connected to compatible horn speaker
- GHS 10i handset microphone with 2in LCD display
- Rotary key and three soft buttons for dynamic controls
- Multi station support with intercom facility
- Locate and monitor up to three other boats with position tracking capability
- VHF 300i AIS - display AIS ship information - position, course and speed of AIS equipped vessels within range
- Waterproof to IPX7 standard

SUPPLIED WITH

GHS 10i handset microphone, active speaker, power cable, 10m deck cable, mounting hardware

GARMIN AIS600

Black Box Class B AIS Transceiver

Black box AIS transceiver allows you to receive AIS target data as well as transmit your own vessel information to other AIS receivers in your area. The inbuilt active splitter allows one VHF antenna to serve both the AIS 600 and VHF radio with minimal signal loss. Whether you're keeping in touch with mariners in the area or tracking other boats on a similar course, you'll be able to share information between vessels for improved safety and greater confidence on the open waters. The AIS 600 is easily added to your existing Garmin marine network and is controlled via the chartplotter, so you'll have all the information you need right at your fingertips.

KEY FEATURES

- ClearTrack™ technology ensures no interruption of AIS traffic position while the VHF radio is in use
- Integrates with chartplotters and VHF via NMEA200
- Call With Radio function - initiate a call to any MMSI target directly from the chartplotter

SUPPLIED WITH

GA 30 GPS antenna with pole and surface mount, power cable, safety related message (SRM) cable, 2m NMEA 2000 drop cable, NMEA 2000 T-connector, USB cable, 2m VHF interconnect cable, mounting hardware, PC/Software CD



Turn to the back page for pricing and ordering info NOW!

Fishfinders & Chartsonars

HUMMINBIRD 550

5in Mono Fishfinder

Outstanding performance and incredible value come together in the Humminbird 550. See everything on the 5in monochrome displays with up to 640 vertical pixels for a crystal clear view. With a screen that size, it's easy to take advantage of the features and clarity of the Humminbird 550, with fish echoes being clearly displayed onscreen. You can also enable Humminbird's Fish ID+ target identification system to convert sonar returns into easy-to-read icons. In-dash mount, or use the Tilt & Swivel Disconnect Mounting System.

KEY FEATURES

- Display: 5in 640x320, FSTN LCD 16 Level Grayscale
- Sonar: Single Beam 200kHz
- Power: 1600W PTP, 200W RMS
- Depth: 800ft/250m



NEW FOR
2010

HUMMINBIRD 570

5in Dual Beam Mono Fishfinder

The 570 takes the winning design and features of the 550, adds a dual frequency transducer and couples it with a more powerful transmitter. Take advantage of the versatile DualBeam Sonar with exclusive Humminbird SwitchFire technology, sensitive enough to track a jig down to 70 feet and separate fish as close as 2.5in apart. You can also enable Humminbird's Fish ID+ target identification system to convert sonar returns into easy-to-read icons. In-dash mount, or use the Tilt & Swivel Disconnect Mounting System.

KEY FEATURES

- Display: 5in 240x240, FSTN LCD 12 Level Grayscale
- Sonar: Dual Beam 200/83kHz
- Power: 2000W PTP, 250W RMS
- Depth: 800ft/250m



NEW FOR
2010

HUMMINBIRD PIRANHAMAX 160 & 190C

3.5in & 4in Ultra-Compact Fishfinders

With one touch you can take advantage of the advanced PiranhaMAX Series fishfinders. Unlock the power of Fish ID+, fish alarms, depth alarms and zoom. You won't believe how easy it is to put the high-performance sonar to work for you. Simply mount your PiranhaMAX in-dash, and let the Transflective Color TFT or contrast enhanced, Clear Edge Grayscale display show you everything, even in direct sunlight!

KEY FEATURES PIRANHAMAX 160

- Display: 4in 160x128, FSTN LCD 4 Level Grayscale
- Sonar: DualBeam 200kHz/83kHz
- Power Output: 800W PTP 100W RMS
- Depth: 600ft/180m

KEY FEATURES PIRANHAMAX 190C

- Display: 3.5in 320x240, 256 colour TFT
- Sonar: SingleBeam 200kHz
- Power Output: 1600W PTP 200W RMS
- Depth: 800ft/250m



HUMMINBIRD 385CI

3.5in Combination Chartplotter and Sonar

The Humminbird 385CI is designed for those who demand top-of-the-line technology, but don't have space for a bigger fishfinder. With oceans of new features, the 300 Series performs way beyond its size, and is right at home in the most extreme fishing situations. With exclusive SwitchFire™ technology you'll get the most out of the DualBeam Sonar that gives you wide coverage with the best picture of the bottom. It's powerful sonar technology built into a pint-size package. With internal GPS and built-in UniMap™ you'll be able to pinpoint your position with ease. A built-in card slot allows you to upgrade with a Navionics chart card for enhanced navigation and map detail.

KEY FEATURES

- Display: 3.5in 320x240 256 colour TFT
- Sonar: DualBeam 200kHz/83kHz
- Power Output: 2400W PTP, 300W RMS
- Depth: 1000ft/300m



NEW FOR
2010

HUMMINBIRD 788C

5in Combination Chartplotter and Sonar

The 788C Combo features a brilliant colour, ultra-high resolution 640V x 640H 5in display, DualBeam PLUS sonar with 4000 Watts PTP power output, GPS Chartplotting with built-in UniMap, and advanced Fishing System capabilities. In addition, it includes dual card slots for maps and saving waypoints, as well as 3 programmable preset buttons to save your favorite views. Maximize your angling experience with the Humminbird 788c fishfinder GPS system.

KEY FEATURES

- 5in 640x640 256 colour TFT
- DualBeam PLUS 200/83kHz
- 4000W PTP, 500W RMS
- Depth 1500ft/45m
- 50 channel GPS
- Trackplotting, chartplotting
- Humminbird Unimap
- 3000 waypoints, 50 routes
- 50 tracks with 20,000 points each
- Dual SD Card Slots
- Upgradeable Software
- Navionics Gold & HotMaps compatible
- Optional Weathersense, Wireless Sonar link, CannonLink & InterLink network modules



HUMMINBIRD 798C

5in Combination Chartplotter and Sonar

This powerful fishfinder is packed with professional technology. With exclusive Humminbird SwitchFire, Side Imaging and Down Imaging and DualBeam PLUS dual frequency technology, you have more fishfinding options than ever. It's the first sonar that adapts with your fishing conditions. Detail explodes off the 5in display, with amazing 640V x 640H pixel clarity, unbeatable colour and contrast. Programmable preset buttons put your favorite views at your fingertips. Mount it in-dash, or use the Tilt & Swivel Quick Disconnect Mounting System. Add Navionics Gold or Hotmaps cartography using the dual SD card slots.

KEY FEATURES

- 5in 640x6640 colour TFT display
- DualBeam PLUS™ 200/83kHz
- Side Imaging and Down Imaging 455kHz, 180° total coverage
- 4000W PTP, 500W RMS
- Depth 100ft/30m (SI), 1500ft/450m
- Memory: Dual SD Card Slots
- Upgradeable Software
- Navionics Gold & HotMaps compatible



We accept most major credit and debit cards



Chartsonars and Chartplotters

HUMMINBIRD 858C & 898C SI SERIES

7in Widescreen Combination Chartplotter and Sonar

These impressive combi units are a blend of form and function, with a generous 7in screen, featuring a 16:9 aspect ratio and incredibly clear picture quality. With Humminbird Side Imaging, Down Imaging and SwitchFire Sonar, the 800 Series puts you in control of the most versatile fishfinding system on the water. Exclusive Humminbird ContourXD cartography, GPS track and chartplotting and any of the Humminbird network modules.



KEY FEATURES

- 7in 800x480 colour TFT display
- DualBeam PLUS™ 200/83kHz
- **898C only** - HD Side Imaging and Down Imaging 455/800kHz, 180° total coverage
- Optional 200/50kHz transducer
- 8000 Watts (PTP), 1000 Watts (RMS)
- 150ft/45m (SI), 1500ft/450m, 3000ft/900m with optional 50kHz transducer
- Memory: Dual SD Card Slots
- Upgradeable Software

NEW FOR
2010

HUMMINBIRD 958C & 998C SI SERIES

8in Widescreen Combination Chartplotter and Sonar

With the screen's 16:9 aspect ratio, crystal-clear pixel resolution, and Humminbird Side Imaging, Down Imaging and SwitchFire Sonar systems, these high-performance units give serious anglers a huge on-the-water advantage. The widescreen display makes for easy-to-read split screen viewing of sonar displays or the incredibly detailed optional cartography. Add on the powerful HumminbirdPC software, and you've got an all-in-one tool to dominate the competition.



KEY FEATURES

- 8in 800x480 colour TFT display
- DualBeam PLUS™ 200/83kHz
- **998C only** - HD Side Imaging and Down Imaging 455/800kHz, 180° total coverage
- Optional 200/50kHz transducer
- 8000 Watts (PTP), 1000 Watts (RMS)
- 150ft/45m (SI), 1500ft/450m, 3000ft/900m with optional 50kHz transducer
- Memory: Dual SD Card Slots
- Upgradeable Software

NEW FOR
2010

GEONAV 4 GIPSY

Colour Handheld Chartplotter

The world's first Navionics Platinum handheld chartplotter! Weighing less than 300g and with a 9hr battery life, the Geonav 4 Gipsy is designed to use Navionics Land&Sea charts. This versatile and powerful unit is equipped with a 12 channel WAAS-EGNOS GPS, world basemap and a transfective TFT 3.5in backlit LCD that offers outstanding graphical performance under all visibility conditions.

Also available is the Geonav 4CXS, which includes land and marine charts at maximum detail on a single cartridge, with voice prompted road navigation - ideal for both onboard and in-car use.

KEY FEATURES

- Compatible with Navionics Land&Sea, Platinum and Land&Sea Platinum charts
- Optional external antenna
- Waterproof (IPX7)
- Visual and acoustic Anchor Alarm
- Save unlimited markers, routes and waypoints on CompactFlash cartridge
- Autozoom™
- Easy View
- Runway display
- Tide & currents data
- Overzoom
- Chart rotation

OPTIONAL ACCESSORIES

Bike mount bracket, car mount bracket, boat mount bracket, earphone, cigarette lighter power cable, mains adapter, speaker with cigarette lighter plug cradle, carrying case



GEONAV 7 WIDE

7in Colour Chartplotter/Fishfinder

Featuring a sunlight view transfective TFT LCD display guaranteed against fogging and condensation and an inbuilt 12 channel GPS. Data windows are optimised for intuitive control and the split screen function enables chart and fishfinder data to be displayed simultaneously. The unit can be linked to the Geonav F170 black box fishfinder. Unlimited markers, routes and waypoints can be saved on CompactFlash cartridges.

KEY FEATURES

- 2D or 3D cartography, built-in world map
- Waterproof (IPX6), panel, bracket or flush mounting
- Acoustic Anchor Alarm
- Autozoom™, Easy View
- EBL/VRM
- Runway display
- Overzoom
- Screen Amplifier™



SUPPLIED WITH

NMEA power supply cable, Quick-mount bracket with snap-on socket, sun cover

GEONAV 5 TOURING

5in Colour Navigator/Fishfinder

An innovative unit which combines a chartplotter, fishfinder and in-car navigator in one package. Features an inbuilt 12 channel WAAS-EGNOS GPS and world map, just add the F170 black box sounder for fishfinder functionality.



KEY FEATURES

- Marine chartplotter, fishfinder and in-car satnav
- Compatible with F170 black box fishfinder
- Navionics Land&Sea, Platinum and Land & Sea Platinum chart compatible
- Save unlimited markers, routes and waypoints on CompactFlash cartridge

SUPPLIED WITH

NMEA power supply cable, Quick-mount bracket with snap-on socket, sun cover





Chart Plotters, Combi Displays

LOWRANCE HDS

5, 7, 8 & 10in HD Chartplotters, Fishfinders & Chart/Fishfinders



Lowrance's range of HDS chartplotters, fishfinders and combination chartplotter/fishfinders offer High Definition fishfinding and Insight charting which delivers unprecedented inland mapping and coastal charting detail with lightning-fast screen display updates. Amazing contour shading lends life-like perspectives to bottom structure as well as topography below and above the water. The new, more versatile and flexible HDS operating system presents a whole new way to view and select Lowrance features with much smoother moves. This new menu format is both easy to grasp and thoughtfully functional, so you can fly through keypad functions control with the greatest of ease and speed. The 8 and 10in models feature a unique new FlyWheel™ scroll dial, as soft command keys for the fastest access to functions. The inbuilt high-sensitivity 16-channel GPS+WAAS antenna makes installation easy - no external antenna to place, no mess, no fuss.

Incredible and award-winning, exclusive Broadband Sounder digital technologies are now inside all HDS sonar models for the best Lowrance fishfinding ever! As the vital link between the transducer and your HDS display, Broadband is proven to find more fish with greater sensitivity, higher definition and more display clarity with superior target separation in all cover, in thermoclines and in all water conditions.

KEY FEATURES

- Range of chartplotter only, fishfinder only or chartplotter/fishfinders with a choice of 5, 7, 8 or 10in displays
- Retrofit Ready - compatible with late-model Lowrance transducers, plus yellow Ethernet networks and NMEA 2000® network connectors
- Preloaded with Insight High Definition mapping (US) or Navionics world background map (rest of world)
- Compatible with Navionics Gold, Platinum, FreedomMaps, Fishing Hotspots, Elite, LakeMaster Pro and more
- SolarMAX™ PLUS display for the best detail in bright sunlight, the best wide-angle viewing ever achieved
- Multi station networking
- Add Digital Radar, Sirius Marine Weather, AIS, instrumentation and more via NMEA2000

LOWRANCE STRUCTURESCAN

Sonar Imaging For HDS

Designed for all HDS displays, StructureScan is the first to give you the full picture, with phenomenal panoramic underwater sonar imaging. Scans left... scans right... AND for the first time scans straight down. Plug and Play, it's easy to install - the LSS-1 imaging transducer is a low-profile, low-drag unit designed for multiple mounting locations - transom, transom step, jack-plate, even trolling motors (with a simple, inexpensive adapter option).

NEW FOR 2010

KEY FEATURES

- DownScan high detail sonar imaging up to 90m (300ft)
- Side Scan imaging to at least 45m (150ft)
- Fully Networkable
- View DownScan imaging with HDS Broadband Radar in split screen mode
- Transducer includes water temperature sensor
- Simple plug and play installation

SUPPLIED WITH

LSS-1 fully-waterproof module, LSS-1 imaging transducer



LOWRANCE BROADBAND RADAR

Networked Radar System



The revolutionary new advanced Broadband Radar is available for the HDS navigation system, integrating superior radar performance with state-of-the-art charting, echosounding and entertainment displays. It provides amazing target resolution, even at 1/32nm range. Docks, channel markers, moored vessels and other targets are displayed with clarity and separation, for added confidence in close quarters. Broadband technology also eliminates the "main bang" of a pulse radar - the obscured "dead zone" immediately around the vessel - which interferes with close target detection.

Because Lowrance Broadband Radar transmits at 1/2000th the power of typical pulse radars (emitting 10 times less energy than an average cell phone), the radome is safe to mount in locations never before possible. No more waiting 2-3 minutes for a magnetron to warm up - 100% solid-state design provides InstantOn™ capability.

KEY FEATURES

- 19in radome, 5.2° beamwidth
- Crystal clear image of your immediate surroundings
- Easy to use for both novice and experienced users
- First radar with no radiation hazard
- InstantOn™ with no tuning required
- Low power consumption, ideal for yachts

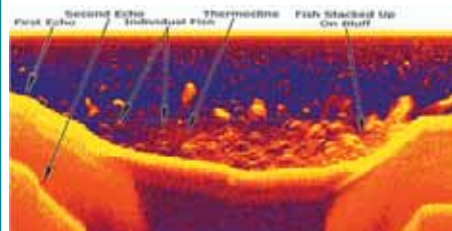


Find out more...

Broadband Sounder

The Lowrance Broadband Sounder is built into the new HDS series and it allows them to see fish in, around and through structure, while operating at high speeds in challenging conditions, even in extraordinary depths.

When fishing in shallow water, the Lowrance Broadband Sounder reduces clutter in the water column and presents a much clearer picture.



It also allows a standard Lowrance 200kHz single-frequency transducer to operate at 83kHz, resulting in a full 120° wide angle coverage. With a wider scanning area, targets remain in the cone's angle for a longer period of time, resulting in more detailed readings.

It also offers the ultimate in resolution and target discrimination, resulting in an unparalleled look at the depths below. Now anglers can find targets in grass, weed beds and other fish - holding structure like never before.



We accept most major credit and debit cards



Chartplotters, VHF Radio

LOWRANCE ELITE-5X, ELITE-5M & ELITE-5

5in Colour Echosounder, Chartplotter and Combi Chart Sounder

The new colour Elite Series brings high performance without a high price. Whether echosounder, chartplotter, or combination unit, Elite provides any vessel with incredible precision and functionality, with a high-definition, high-detail 480x480 pixel, 5in enhanced SolarMAX™ sunlight viewable colour display with wide viewing angle. An uncomplicated new keypad design enhances one-hand control and new, simpler menu text + icon design makes intuitive operation simple.

KEY FEATURES

- Elite-5X - Dual frequency Echosounder
- Elite-5M - GPS+EGNOS+MSAS Chartplotter
- Elite-5 & Elite-5X - Combination dual frequency Echosounder/Chartplotter
- Easy-to-install low-profile base with convenient cable routing access
- Easy one-hand tilt/swivel viewing adjustment, removal for stow and re-install

ECHOSOUNDER FEATURES (ELITE-5X & ELITE-5)

- 500W RMS, 4000W PTP, depth to 305 m/1,000 ft
- Dual-frequency 83/200 kHz, 20/60 degree Skimmer® transom-mount transducer with internal temp sensor and up to 120° of wider sonar coverage

CHARTPLOTTER FEATURES (ELITE-5M & ELITE-5)

- Internal 16-channel GPS+EGNOS+MSAS antenna, plus external antenna option
- Built-in worldwide reference basemap
- Navionics Gold compatible (micro SD card format)
- Up to 3,000 waypoints, 100 routes, 100 retraceable plot trails
- Overlay Data
- Multi-Zoom Choices
- High-Speed Updates
- Back-up Memory



LOWRANCE LVR-250

Fixed DSC VHF Radio

Solid reliability and attractive features without the high price in a new, high-quality 25W/1W fixed-mount VHF marine radio with DSC facilities.

KEY FEATURES

- 1 x 1.8in LCD channel/function display with backlighting
- 25 watts transmit power / 1 watt low power mode
- Full DSC Class D/SC-101 automatic distress operation
- 6 tactile microphone keys
- Rotary Channel control with press-to-enter
- Super-large 16/9 calling channel key
- 3 favourite channel mode with scan
- 3W external speaker and GPS interface
- Display GPS boat position and time when connected to a compatible GPS chartplotter
- Rotary Channel control with press-to-enter
- Local/Distant feature eliminates interference
- Case and mic waterproof (JIS 7 submersible)



LOWRANCE LVR-880

Fixed DSC VHF Radio

Solid reliable 25W/1W DSC marine radio - the first to feature an FM radio receiver and NMEA2000 interface for Track-Your-Buddy. Plus other premium features in a new and exceptional 25W/1W DSC marine radio.

KEY FEATURES

- NMEA0183 and NMEA2000 DSC integration
- Navigation to waypoint with transfer capability to plotters
- 200 waypoints with up to 6 character naming
- Display boat position and time when connected to a compatible GPS chartplotter
- Intercom with talkback plus built-in 22w hailer-horn
- Extra-large and bright FSTN full-matrix screen
- Large 57mm speaker for great audio output when running at high speed
- Rotary Channel control with press-to-enter
- Instant "GO" and MOB key
- 3W external speaker jack
- Case and mic waterproof (JIS 7 submersible)



LOWRANCE LHR-80

Handheld VHF

Enhanced with a built-in GPS receiver, the Lowrance LHR-80 is a full-featured, 1/5W handheld VHF marine radio with the added convenience of a simple plotter with Great Circle waypoint navigation, Man Over Board functionality and storage for up to 500 waypoints. It's waterproof and it floats too!

KEY FEATURES

- Built-in GPS receiver with unique new trackplotter screen feature
- Great Circle waypoint navigation
- Storage of up to 500 waypoints
- Man Over Board functionality
- "Track-Your-Buddy" allows boaters to pinpoint and display the exact location of other vessels using LL position polling
- "Get Buddy" transmits radio's position at the push of a button
- Save a buddy list of up to 20 people
- Large LCD display with adjustable contrast settings and backlighting
- 1400mAh Li-Ion battery
- Signal Strength Indicator
- NOAA Wx 1050Hz tone alert for weather/storm warnings (US only)
- Lat, long position and time display
- Distress call button
- Up to 13hrs battery life



SUPPLIED WITH

Rubber Duck antenna, desktop charger with wall adapter, wrist strap and belt clip

Turn to the back page for pricing and ordering info NOW!



Navigation Equipment

SIMRAD NSE8 & NSE12

8in & 12in Combi Displays

The new Simrad NSE is engineered for anyone who is serious about performance navigation. The NSE8 and NSE12 displays are feature-rich network displays outfitted with a lightning fast processor, high bright LED backlight display and intuitive control interface. Equipped with the optional BSM-1 broadband sounder module and BR24 Broadband Radar or HD digital Radar, the NSE range offers the best in class multifunctional performance.



KEY FEATURES

- Lighting Fast Chartplotter pre-loaded with complete European Navionics Platinum charts for Europe
- Award winning echosounder and radar technology
- Single, Dual or multi-station configurations
- Network NMEA0183, NMEA2000 or Simnet data
- Input and output of video or navigation data
- New Intuitive control interface for easy operation
- Elegant Design, Brutally Strong Simrad Construction
- Brilliant Low Power LED Display Technology
- Bracket or flush mount

SIMRAD HD RADARS

High Definition Digital Radar

Simrad HD Radars combine high performance scanners with the latest developments in digital radar processing. Exceptional detection of small or distant targets with virtually no screen clutter displays the full picture of your surroundings. Radomes are compact and lightweight, making them ideal for sail boats and small powerboats where space and power supply are limited. New HD digital radomes deliver superior performance in a easy to rig package. Mariners seeking ultimate range and detail will select an Open Array antenna. The radars deliver outstanding performance with higher power output and narrow beam widths. Larger yachts and professional vessels will benefit from these larger, more powerful systems.

KEY FEATURES

- **DX42S** 2kW 18in Radome, 24nm, 5.3° beamwidth
- **DX64S** 4kW 24in Radome, 48nm, 4° beamwidth
- **TX06S** 6kW 4ft Open Array, 64nm, 1.8° beamwidth
- **TX10S** 10kW 6ft Open Array, 72nm, 1.2° beamwidth
- **TX25S** 25kW 8ft Open Array, 96nm, 1° beamwidth



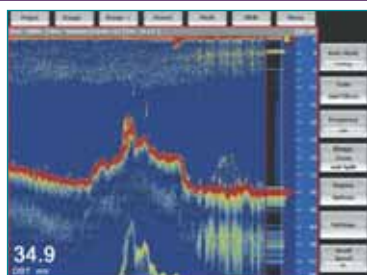
SIMRAD BSM-1

Broadband Sounder Module

Add the NEW award winning BSM-1 Sounder Module to either NSE or GB40 navigation system. Choose from a wide range of transducers.

KEY FEATURES

- Tri-frequency capability for optimal water column performance
- Deep water performance of over 3000ft (with appropriate transducer)
- Low Power and Low-noise Sonar
- High Resolution Linear receiver providing superior clarity in shallow and mid water



SIMRAD TP10, TP22 & TP32

Cockpit Tillerpilots

Simrad's legendary Tillerpilots offer unparalleled reliability, power and low current consumption along with supreme course keeping ability and quiet operation.



KEY FEATURES

- Powerful, low current consumption
- Waterproof double sealed design
- NMEA interfacing to GPS & windvane (TP22/32)
- SimNet compatible (TP22/32)
- Optional external fluxgate sensor (TP22/32)
- Hand remote option (TP22/32)

MODELS AVAILABLE

- **TP10 (Up to 10m)** - Budget standalone Tillerpilot.
- **TP22 (Up to 11m)** - Faster hard over time plus SimNet and NMEA compatibility.
- **TP32 (Up to 12m)** - Top spec high performance pilot with 85kg thrust and ultra-fast hard over time.

SUPPLIED WITH

Mounting kit, deck socket (TP22/32 only)

SIMRAD NAIS300 & AI50

AIS Transceiver Units

Class B Transceiver available as either a Blackbox (NAIS-300) or standalone unit with inbuilt display (AI50). Supplied with integrated GPS receiver



AI50 AIS Transceiver

KEY FEATURES

- See and be seen!
- AIS Class B transmit receive function
- Simple Plug and Play installation via NMEA0183 or Simnet interfaces
- Both models can be integrated with a compatible chart display or PC via NMEA0183 or Simnet



NAIS300 Black Box Transceiver



We accept most major credit and debit cards



Wireless Instruments

TACKTICK T035 SPEED SYSTEM

Entry Level Speed System

The brand new T035 Speed system is the ideal solution for all yachts 35ft or under. A large, wireless 38mm (1.5in) display shows speed. There are no cables to pull through headlinings or bulkheads, the only requirement is a 12v connection to power the display.



KEY FEATURES

- Boat Speed and Log
- Large clear backlit digital display
- Completely waterproof to 10 metres
- Simple installation, easy calibration
- Show depth on the same display - simply add a T912 Depth Transducer

NEW FOR
2010

SUPPLIED WITH

Speed transducer, hull transmitter and display unit

TACKTICK T034 DEPTH SYSTEM

Entry Level Depth System

The brand new T034 Depth system is the ideal solution for all yachts 35ft or under. A large, wireless 38mm (1.5in) display shows depth. There are no cables to pull through headlinings or bulkheads, the only requirement is a 12v connection to power the display.



KEY FEATURES

- Depth & Sea Temp
- Large clear backlit digital display
- Completely waterproof to 10 metres
- Simple installation, easy calibration
- Show speed on the same display - simply add a T911 Speed Transducer

NEW FOR
2010

SUPPLIED WITH

Depth transducer, hull transmitter and display unit

TACKTICK T100 SPEED/DEPTH

Bidata System

The Tacktick Speed/Depth system is a compact solution for those on a budget or where space is limited. The single display shows boat speed, depth and distance travelled.



KEY FEATURES

- Speed, Depth and Distance
- Solar powered with integrated lithium battery
- Efficient power consumption - units can run autonomously for up to 300 hours
- Easy to expand system

SEEN IT
FOR LESS?
WE WON'T BE
BEATEN ON
PRICE!

SUPPLIED WITH

Dual digital display, through hull speed and depth transducers, hull transmitter

TACKTICK T037 SPEED/DEPTH

Entry Level Speed & Depth System

The brand new T037 Speed and Depth system is the ideal solution for all yachts 35ft or under. A large, wireless 38mm (1.5in) display shows speed and depth. There are no cables to pull through headlinings or bulkheads, the only requirement is a 12v connection to power the display.



KEY FEATURES

- Depth & Sea Temp
- Boat Speed and Log
- Cost effective solution
- Large clear backlit digital displays
- Completely waterproof to 10 metres
- Simple installation, easy calibration

NEW FOR
2010

SUPPLIED WITH

Two digital display units, hull transmitter, triducer

TACKTICK T033 WIND SYSTEM

Entry Level Wind System

The T033 wind system is the ideal solution for cruising yachts 35ft or under. Wind speed and direction information is delivered wirelessly from the wind transmitter, whilst the display itself is powered by your boat's 12-volt battery.



KEY FEATURES

- True and apparent wind speed and direction (true wind requires boat speed)
- Large clear backlit analogue display
- Completely waterproof to 10 metres
- Simple installation, easy calibration

SUPPLIED WITH

Wind transmitter and display unit

TACKTICK T101 WIND

Wind System

The wireless T101 Wind System does away with all the inconvenience of installing a traditional wind system - with no mast cable the mast doesn't need to be stepped, plus the weight saved improves the yacht's performance. The display shows wind direction (360° and close hauled) and wind speed.



KEY FEATURES

- Large clear 'analogue' display
- Solar powered with integrated lithium battery
- Efficient power consumption - units can run autonomously for up to 300 hours

SUPPLIED WITH

Wind transmitter and display unit



Find out more...

Tacktick Wireless Instruments

BREAK FREE!



EASY TO INSTALL - a typical installation can be done in just a few hours, with no need to drill holes in bulkheads, run cables through headlining or down the mast.

PERFORMANCE ADVANTAGE - with no mast cable, spar weight is reduced and the boat's centre of gravity is lowered.

DATA WHERE YOU NEED IT - with clip in cradles, displays can be positioned anywhere on the boat.

SEALED FOR LIFE - all Tacktick products are totally waterproof (submersible to 10m), which also eliminates condensation. Reliability also increases since wiring faults typically account for 80% of system problems on boats.

TACKTICK T106 REMOTE DISPLAY

Handheld Wireless Remote Display

Not just a remote control, this is an independent Micronet wireless palm sized display which shows all system data and also incorporates a rolling road and performance pages for displaying uploads from tactical software, and it can function as a remote control for Micronet displays. Add as many handsets as needed for key crew members.



KEY FEATURES

- Repeats a wide range of data
- Palm sized, easy to hold
- Totally multifunction
- Graphic multi-line display
- Solar powered with integrated lithium battery
- Can be used with other manufacturers' equipment

HOT
PRODUCT

SUPPLIED WITH

Remote display, universal wireless NMEA interface

TACKTICK T108 CRUISE PACK

Wireless Speed, Depth, Wind System

This great value package is ideal for sailboats of all sizes, coming complete with a 'digital analogue' and a dual digital display.



KEY FEATURES

- Speed, Depth, Distance
- Wind Speed and Direction
- Calculated functions
- Compatible with other manufacturers via NMEA
- Solar powered with integrated lithium batteries
- Efficient power consumption - units can run autonomously for up to 300 hours

SUPPLIED WITH

Dual Digital Display, Analogue Display, Speed and Depth transducers, Wind Transmitter, Hull Transmitter

Turn to the back page for pricing and ordering info NOW!

Navigation Equipment

FURUNO MFD8 & MFD12

NavNet 3D 8.4in & 12.1in Combi Displays

Choose between 8.4in or 12.1in colour sunlight-viewable displays with high brightness and anti-reflective glass coating that allows use even in direct sunlight. The low profile design is ideal for flush mounting or can be bracket mounted.



KEY FEATURES

- 8.4in TFT 640x480 pixel or 12in TFT 800x600 pixel displays
- Up to 2,000 waypoints, 200 routes, 100 waypoints per route
- Head up, course up, North up, relative motion or true motion display modes
- True 3D environment for a more instinctive chart presentation
- Simple, intuitive operation using the Rotokey and Scrollpad controls
- Dedicated 3D button - toggle between 2D perspective and favourite 3D angle
- High-resolution satellite photography can be fused with raster or vector chart information, viewable in 2D or 3D
- No preset chart scales - zoom to the exact magnification level you wish
- New Ultra High Definition (UHD) Digital Radar
- 3D chart-radar overlay (requires SC30 or SC50 satellite compass input)
- Furuno Digital Filter (FDF) Fish Finder

FURUNO NAVNET 3D BB

NavNet 3D Black Box Navigation Systems

The NavNet 3D BB system offers all the features of the MFD8/MFD12, linking a powerful NavNet3D black box processor with a range of LCD displays, from 12.1in up to 17in.



KEY FEATURES

- 12.1in TFT Display Control Unit with integral keypad
- 12.1in SVGA marine monitor, 800x600 pixels
- 15in XGA marine monitor, 1024x768 pixels
- 17in SXGA marine monitor, 1280x1024 pixels
- Dedicated control keyboard

FURUNO NAVNET 3D

Upgrade Modules

Add powerful features to your NavNet 3D system with these optional modules.

MODULES AVAILABLE

- DFF3 Digital Sounder Module
- FA30 AIS Receiver
- FA50 Class A & B AIS Transponder
- SC30, SC50 & SC110 Satellite compasses
- FAX30 Weatherfax & Navtex Receiver
- BBWX1 Sirius Satellite Weather Receiver (US only)



FURUNO M1623

6in 2.2kW Mono LCD Radar

A great value low power consumption LCD radar which gives detailed images at short ranges thanks to narrow pulse lengths and dual IF bandwidths. In Watchman mode, the antenna is stopped and the screen displays nav data only. The radar wakes up at a specified time interval and operates for 1 minute. If a target enters the guard zone, an alarm sounds and the radar goes into its normal operating mode. The alarm may also be set to trigger if a target leaves the guard zone.

KEY FEATURES

- 15in 2.2kW radome, max range 16nm
- Normal, Off-Centre & Watchman operating modes
- 12 range scales
- EBL, VRM, TLL output (Target Lat/Long)
- Cursor Lat/Long input/output, Echo Trail, Guard Zone Alarm
- Automatic receiver tuning, sensitivity and anti-clutter controls
- Interface with GPS and chart plotter, waypoints displayed as "lollipop" marks
- Excellent screen clarity, high contrast, day and night modes
- Waterproof display, ideal for cockpit or flybridge installation



SUPPLIED WITH

2.2kW 15in radome antenna & 10m cable

FURUNO GP7000 & GP7000F

Colour 7in Widescreen Chartplotter and Chartsounder

Chartplotter (GP7000) or Chartsounder (GP7000F) with Course Plot, Nav Data, Steering and Highway display modes. The echo-sounder can be displayed as full or split screen with the course plot mode.

KEY FEATURES

- Dual chart slots
- North up, course up or auto course up
- User friendly operation with rotary control and softkeys
- 5000 waypoints, 200 routes, 12,000 trackpoints
- 600W or 1kW dual frequency 50/200kHz echosounder
- Max depth 1200m
- Bottom-lock, Bottom-zoom, Marker-zoom, A-scope



FURUNO NX300D

Dual Mode Navtex Receiver

One of our most popular products, this compact dual frequency (518/490kHz) unit has a high contrast 4.5in display and receives current and early warning weather reports and navigation alerts worldwide, within 200-400nm of shore.

KEY FEATURES

- Printout available via PC
- Can be used as a Nav data repeater
- Low power consumption



SUPPLIED WITH

Antenna

FURUNO FCV620 & FCV585

5.6in & 8.4in LCD Colour Fishfinders

High performance 50/200kHz dual frequency fishfinders with wide angle sunlight viewable displays. Digital filter adjusts gain, STC and output power for outstanding detection in shallow and deep water. Swivel mount bracket or flush mountable.

KEY FEATURES

- FCV585 - 8.4in display, up to 1kW output (requires MB-1100 matching box)
- FCV620 - 5.6in display, 600W output
- Single, dual, zoom and Nav data modes
- Cruising and fishing auto modes
- Fast pulse transmission rate for outstanding shallow water performance
- TLL output for GPS plotter display
- 8/16/64 colour echo presentation for displaying subtle echo images
- Customised nav data display when interfaced with appropriate sensors



We accept most major credit and debit cards



NASA PC NAVTEX PRO

Dual Frequency PC Navtex Receiver

View Navtex messages on your PC! Instantly get the latest weather forecast from your local station or any other message stored in the unit's memory.



KEY FEATURES

- Receives messages even without PC connected
- Supports selected message filtering and printing
- Low current consumption - can be left on 24/7

SUPPLIED WITH

Compact stub antenna, software, cable

NASA AIS ENGINE 3

2 Channel AIS Receiver

Turn your PC or compatible chart plotter into an AIS display! Windows 95, 98, ME, XP, 2000, NT and Vista compatible, the software includes a world map on which vessels are plotted.

KEY FEATURES

- Optional GPS input
- Display vessel name, MMSI number, position, call sign, destination etc
- Works with all plotters, radars, PCs or other equipment with an AIS input
- Super sensitive receiver with GPS multiplexer
- Receives all class A and class B messages



SUPPLIED WITH

Software, 9-pin serial data cable, 12 volt power cable

NASA HF3/W

MF/HF Receiver



Covering 30Khz - 30Mhz, this compact MF/HF receiver includes a weatherfax interface.

SUPPLIED WITH

Antenna, PC cable, power supply, Meteoscan lite software to download weatherfax pictures, RTTY weather forecasts and navtex messages.

NASA CLIPPER

Instrument System

Budget 110mm instrument system with large clear displays. Supplied with transducers and cabling.



KEY FEATURES

- **Log** - log, trip log and trend indicator, kts/mpH
- **Depth** - keel/waterline offset, deep/shallow alarms, trend indicator, feet or metres
- **Wind** - "digital analogue", selectable pointer style
- **Duet** - combines the Clipper Speed and Depth
- **Compass** - true or magnetic display, steering function, off-course alarm
- **GPS Repeater** - COG, SOG, Lat/Long, BTW, DTW, XTE, rolling road display

NASA CLIPPER NAVTEX

Dual Frequency LCD Navtex Receiver



This dual frequency Navtex offers an ideal solution for those looking for an easy to fit, flush mount unit.

KEY FEATURES

- Ultra clear 16 line LCD with white backlighting
- Dual frequency (490 & 518kHz)
- Low power consumption (50mA)

SUPPLIED WITH

Compact stub antenna

NASA AIS RADAR

AIS Receiver



Standalone AIS receiver that shows AIS equipped vessels in a radar-style format. A trail of previous positions clearly shows the relative track of all the targets on the screen. Requires standard VHF antenna.

KEY FEATURES

- 1, 2, 4, 8, 16 and 32nm ranges
- SOG, vessel's name, MMSI and current Lat/Long
- Low power consumption

NASA MOBI

Man Overboard Indicator

Keep your crew safe with this state of the art man overboard system, consisting of a base unit and up to eight waterproof active transponder tags, each of can be individually named.

KEY FEATURES

- Failsafe transponder technology
- Base unit alarm if crewmember falls overboard
- Each tag is individually identified on the display
- 3 x AAA batteries will power each transponder for several weeks' continuous use

SUPPLIED WITH

Base unit, three tags



NASA BM-1

Battery Monitor

Monitors the performance of 12v lead acid battery systems with up to 600Ah capacities. It shows voltage, current (charge or discharge), the battery's state of charge and the time to charge or discharge.



KEY FEATURES

- Supply current 3mA
- Battery capacities 5-600Ah
- Load current 100A maximum
- 110mm case with high contrast LCD
- 24v version also available

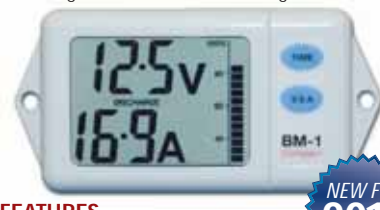
BM-1 & BM-1 COMPACT SUPPLIED WITH

Display, precision shunt and prefabricated cables for simple DIY installation

NASA BM-1 COMPACT

Battery Monitor

This compact 12v lead acid battery system monitor displays the voltage, current (charge or discharge), state of charge and the time to charge or discharge.



KEY FEATURES

- Supply current 1.5mA
- Battery capacities 5-600Ah
- Load current 100A maximum
- Compact - 125x62x23mm with high contrast LCD



Combi Displays & Fixed VHF Radio

NORTHSTAR 8100i

15in Colour Touchscreen Combi

Wow! What A Deal! A £6,500 Integrated Nav System Now Reduced To Just £1,500. **And Exclusively From Us.** The Northstar 8000i is a powerful 15in multi function chart plotter with sounder, entertainment and radar options. It comprises of black box processor, remote keypad and sunlight viewable IP65 15in touch screen display. The system gives you the best of both worlds with a choice of either keypad data entry and control or touch screen and you can even plug in an optional USB mouse or trackerball to control the system.

Why Is It So Cheap? To be frank, the global recession has really hit the market for top end marine electronics and sales for this system at its normal price have effectively dropped off a cliff! So take advantage now of this incredible deal to get some of the world's most advanced electronics at an unbeatable price.

DISPLAY FEATURES

- High performance sunlight viewable waterproof 15in touch screen display
- Accepts separate inputs from other devices
- DVI input, VGA input, two S video inputs, 2 composite inputs and USB input
- Multiple 8000i systems can be linked and share data throughout the system

NAVIGATION FEATURES

- Embedded C Map Max Pro charts - unlock region simply by purchasing a licence
- Chart updates easily transferred from PC over the internet in real time
- Head up, course up or north up display
- Split screen - show up to 4 functions at the same time in individual panes
- Chart layers - turn on and off detail such as buoyage, lights, chart text, depth etc
- View 3D chart to see a panoramic view of the area as if you were flying over it
- Synchronised 2D and 3D view of the same chart side by side
- Built in hard drive offers virtually unlimited waypoints, marks, routes and tracks
- Waypoints can be named and given a full set of notes via onscreen keyboard

SOUNDER OPTION

- 1kW high performance dual frequency 50/200kHz network sounder available
- Can also support lower power 600W transducers already fitted on the boat

RADAR OPTION

- Compatible with the digital scanner range from Northstar/Navico
- Compatible with latest broadband radar technology available from Navico

ENTERTAINMENT OPTIONS

- Features standard USB connections to connect a DVD, CD or memory sticks etc
- On screen interface allows easy playback of sources
- Video camera input either directly to the display or via a network connection

OPTIONAL ADDONS



BR24 Broadband Radar



2kW Digital Radome



4kW Digital Radome



6kW Digital Open Array



1kW Network Sounder

SUPPLIED WITH

Black box processor, remote keypad, 15in touchscreen monitor, gps antenna, sun cover, power cable & fuses, utility cable, ethernet loopback, audio cable, USB dash mount connector, chart license key & holder, manuals, quick start, all fixings, cleaning cloth

NORTHSTAR EXPLORER 725E WITH SECOND STATION

Fixed DSC VHF

The Explorer 725 includes a built in barometric pressure sensor which provides prediction of weather and fish activity displayed as a digital graph on the display. The wireless second station (the Explorer 705) features the same large LCD as the radio and offers complete control of all DSC and radio functions, plus you can have up to two second stations per radio, so simply add another Explorer 705 for a three station radio with intercom facility! The Track-Your-Buddy feature allows you to combine your Explorer 725's DSC position polling with Track-Your-Buddy enabled Chartplotter or Combo units to show the location of up to three other boats on the chart display. The wireless second station handset is fully waterproof (JIS7) to withstand the tough marine environment.

KEY FEATURES

- Fismic with channel, power and priority channel buttons
- Optional full function second station handset
- Up to two second station handsets per radio
- Super large, clear FSTN display with amber backlighting on both units
- Instant access to up to 3 of your favourite channels with easy user programming
- Select from several scanning modes such as All-Scan and Favourite Channel
- Automatic GPS boat position and time when connected to a GPS receiver
- Local/Distant feature eliminates unwanted interference in high traffic areas
- Call logs with instant call back capability

SUPPLIED WITH

Fismic, flush and bracket mounts, dust cover



We accept most major credit and debit cards



ECHOPILOT PLATINUM FLS

Colour Forward Looking Sonar



A colour FLS with the best range and performance yet. Developed with all the expertise gathered by Echopilot over 13 years of manufacturing Forward Looking Sonar. With greater resolution than previous models, the large transfective colour LCD can be seen in the brightest sunlight. The use of colour enables enhanced seabed interpretation - the colour of the target depends on its hardness and the strength of echo that it returns. The Platinum is NMEA compatible and can display GPS data. Flush mount or optional bracket for wheelhouse use.

KEY FEATURES

- Large colour sunlight-viewable display
- 200m forward range
- Optional wireless link between transducer and instrument for ease of installation
- Optional computer output for interfacing with on board computers

SUPPLIED WITH

200kHz professional transducer with 12m cable

ECHOPILOT SILVER III & GOLD III FLS

Forward Looking Sonar

Now with even better performance! Real time forward looking 200kHz sonar with enhanced processing software. See underwater obstructions ahead of the vessel rather than just the depth below. The range is 20-150m ahead, 10-75m down.

KEY FEATURES

- Manual or Autogain
- Manual or auto range change
- New enhanced processing software
- History display of sea bed
- Optional log transducer
- **Gold** - Display GPS info via NMEA - position, BTW, DTW, XTE and waypoint name
- **Gold** - Output log and depth info via NMEA

SUPPLIED WITH

200kHz standard or professional transducer with 12m cable



ECHOPILOT PLATINUM VIDEO FLS

Black Box Colour Forward Looking Sonar



Turn your combi display into a colour FLS repeater! Black box colour forward sonar which links with third party combi displays with a composite or S-Video input. Available in two versions - a video interface box to connect an FLS Platinum to a combi display, or a complete black box solution comprising transducer, skin fitting, cables, electronics box and control keypad which can be connected to any colour display or monitor with composite or S-Video input (display not supplied)

KEY FEATURES

- Compatible with Raymarine E series, Garmin 4000/5000 series, Furuno 10in NavNet, Simrad CX and Navman 8000 series and others - **call for advice**
- 200m forward range
- Improved performance
- Forward Alarm
- Digital Depth
- Speed Option
- Built in GPS Repeater
- NMEA Compatible



ECHOPILOT BRONZE FLS

Forward Looking Sonar

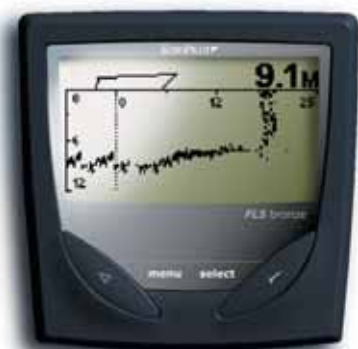
If you're stuck for space but still want to fit an FLS, the Echopilot Bronze is ideal, contained in a standard 110x110mm instrument-sized case with the latest transfective LCD technology.

KEY FEATURES

- Simple two key operation
- Forward range 100m, depth range 50m
- Forward alarm
- Optional professional transducer for long keel boats over 35ft

SUPPLIED WITH

200kHz standard or professional transducer with 12m cable



ECHOPILOT BRONZE TRIO

Combination Instrument Display

Versatility instrument with simple, intuitive menu driven operation with transfective backlight, high definition dot matrix LCD for maximum visibility. The Trio is a combination log and depth unit, but is also a fully functional NMEA repeater and feature an innovative steering screen displays course to Waypoint on a simulated compass card and has an off course arrow showing course over ground.

As the Trio will work with a wide range of third party transducers it's ideal as a replacement if you don't want the cost and hassle of lifting your boat out of the water to change the existing transducers

KEY FEATURES

- Combined Log and Depth
- NMEA repeater
- NMEA input accepted from any other NMEA compatible depth or log units
- Compatible with many old 150kHz or 200kHz depth transducers
- Compatible with many old paddlewheels
- Also available - **Bronze Plus Log** and **Bronze Plus Depth**



Find out more...

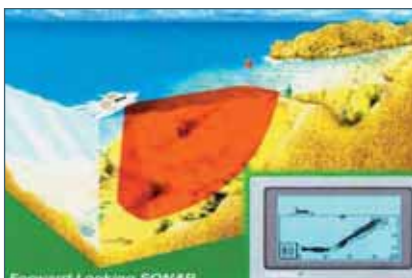
Real Time Forward Looking Technology Explained

Real Time means that the FLS doesn't gradually build up a picture, instead it scans the whole forward view and updates the screen several times a second. An obstruction ahead of the boat will be shown immediately.

The FLS displays a 2D profile of the seabed below and 3-5 times that depth ahead of the vessel on a flat muddy bottom. This increases to 8 or 9 times if the seabed shoals upward and more than this for a large target. Rocky bottoms give especially strong reflections and hard vertical surfaces like quay walls or reefs will often be seen at 150m or more.

In the vertical plane the FLS scans through 90° from straight ahead to straight down.

The FLS is not designed to be a fishfinder, it is a collision avoidance device. In reality it does pick up larger fish and sometimes shoals of smaller fish.



Equipment Mounting Pods

MARINEPOD

Mounting Solutions



MarinePod is a range of waterproof electronic equipment housings designed to fit Whitlock and Edson steering gear, both 9.5in and 12in wide rail systems. Its unique design allows any pod to fit either system with a template supplied for easy fitting. Manufactured in the UK using a highly UV resistant, acrylic capped ABS plastic and specialist seal system, the pods fit to the binnacle rail with heavy duty stainless steel clamps which are included as standard. The system can be adapted to fit 7/8in, 1in and 1.25in diameter rail systems or you can custom drill the reinforced rear case to suit a specific installation.

KEY FEATURES

- Mount instruments, radar, chartplotters and more at the helm
- Option to factory pre-cut pods to fit most popular makes and products
- Custom colour moulding option
- UV resistant mouldings
- Specialist seal system protects the back of the equipment from water ingress

MARINEPOD MSP1

Mounting Pod

The MSP1 is a large 420x330mm pod suitable for bigger combi displays and chart plotters with a display size of over 10in. It can also be used to mount several smaller displays together such as instruments, autopilot control etc.

KEY FEATURES

- Designed for large multifunction displays over 10in screen size
- Also can be used with a smaller 8in display plus additional instruments
- Maximum useable face area 420x330mm
- Maximum depth 160mm

SUPPLIED WITH

4 stainless steel clamp brackets, fixings



MARINEPOD MSP2

Mounting Pod

The MSP2 has a 370x290mm face making it ideal for medium-sized chartplotters, radars and combi displays with 7-8in displays. It is the same width as the MSP3 instrument pod and so can be mounted together as a single pedestal installation.

KEY FEATURES

- Designed for medium size multifunction displays between 7-8in screen size
- Width matches MSP3
- Maximum useable face area 370x290mm
- Maximum depth 160mm

SUPPLIED WITH

4 stainless steel clamp brackets, fixings



MARINEPOD MSP3 & MSP4

Instrument Pods

The MSP3 and MSP4 instrument pods are designed to fit three or four standard 110x110mm displays respectively, but are also suitable for engine controls, wider multi-function instrument displays and autopilot control heads (eg Raymarine ST7002+ etc).

KEY FEATURES

- Designed for mounting 110mm instruments from manufacturers such as Raymarine, Garmin, Nasa, Tacktick, Furuno etc
- Can also be used for engine instruments and controls
- Maximum depth 60mm

SUPPLIED WITH

2 plastic clamp brackets, fixings



MARINEPOD MSP5-A

Single Instrument Pod

The MSP5-A is designed for mounting a single 110x110mm instrument. The rear of the case has an extrusion with flat horizontal mounting point which can be used to attach the pod to a bulkhead or other fixing point. The MSP5-A is supplied as standard with a stainless steel mounting clamp which is suitable for attaching to a pedestal guard rail.



KEY FEATURES

- Maximum useable face area 150x155mm
- Maximum depth 75mm
- Also available without the mounting clamp (MSP5)

SUPPLIED WITH

Stainless steel mounting clamp, fixings

MARINEPOD MSP6

Custom Pod for SC500

There's no better place than the helm to view chart and AIS information. The MSP6 is a custom made rail mount pod suitable for the DigitalYacht SmarterChart 500 series 5in combi displays.

KEY FEATURES

- Custom pod for DigitalYacht SC500
- Easy binnacle, rail or steering hoop mounting using an adjustable clamp

SUPPLIED WITH

Adjustable 1-1.25in clamp

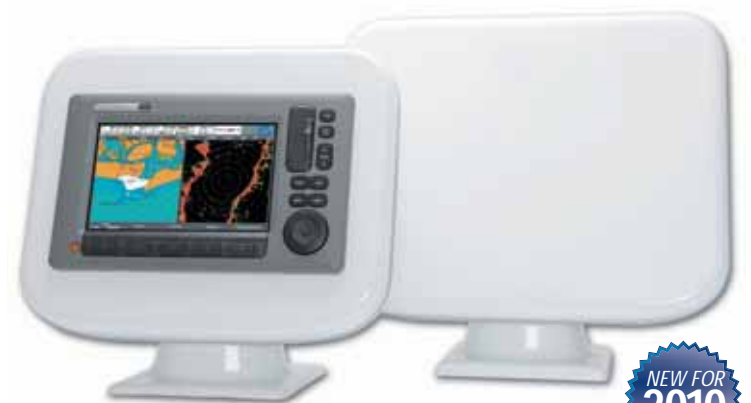


MARINEPOD MSP1-P & MSP2-P

Power Pods With Deck Base

The **MSP1P** is a mounting pod designed for large multi function displays with screen sizes over 10in. It can also be used with a smaller 8in display plus additional instruments. The smaller **MSP2P** is designed for medium size multi function displays with screen sizes between 7-8in.

Both feature a deck-mounted swivel base which allows easy rotation of the pod to suit a range of viewing angles, making them ideal for power boat applications. They fix easily to the deck or cockpit using just four screws.



KEY FEATURES

- Deck-mounted swivel base
- **MSP1P** - Maximum useable face area 420x330mm
- **MSP1P** - Maximum depth 160mm
- **MSP2P** - Maximum useable face area 370x290mm
- **MSP2P** - Maximum depth 160mm

NEW FOR
2010

HOT
PRODUCT



We accept most major credit and debit cards



Entertainment, Radar Enhancer

MB QUART WR1-USB

Marine AM/FM/Media Receiver

Combined AM/FM radio and digital media player. Features a large multicolour LCD display and the fixed front panel and no CD mechanism enhances the durability of this product, making it ideal for the demands of marine onboard use.



KEY FEATURES

- AM/FM tuner with 12 AM/18 FM presets
- Multi media - CD/CDRW/MP3/WMA compatible
- 4x 40 watt output
- RCA audio output
- 3.5mm AUX input
- USB and SD card input
- PA input with optional PA microphone
- iPod ready with full text display to control iPod from your deck using the optional cable

NEW FOR
2010

MB QUART IPOD DOCK

Marine CD Head Unit

Control your iPod from your MB Quart system - works with iPod Classic, Nano, Touch and iPhone, connects to any cable with 30-pin iPod dock connector. Dash or surface mounts for horizontal or vertical installation.



HOT
PRODUCT

KEY FEATURES

- Interchangeable adaptors and inserts create perfect, single iPod dock
- Black bezel (without MB Quart Logo) and Chrome bezel (with MB Quart Logo) versions available

MB QUART WM1

Marine CD/DVD Head Unit

Multi-region DVD, DVD-R/RW, CD, CD-R/RW head unit with easy-to-read text display. Includes waterproof credit card remote. Video out also allows you to view iPod and satellite radio displays on your TV.



KEY FEATURES

- AM/FM tuner with 12 AM/18 FM presets
- SIRIUS Satellite Radio and iPod control
- USB input plays MP3 and WMA formats
- 50 watts x 4
- 5 preset EQ settings
- 3 RCA pre-outs
- Subwoofer/CD changer control
- IPX5 construction, anti-shock CD buffer, J1171 marine ignition protection, salt/UV resistant
- Also available as a CD only version (CD, CD-R/RW)

HOT
PRODUCT

MB QUART WR1

Marine CD Head Unit

AM/FM/CD player with CD changer control function. iPod input with text display - control your iPod when within range of the optional remote control. This practical unit is moisture resistant and designed to withstand UV exposure and extreme heat conditions.



KEY FEATURES

- AM/FM tuner with 12 AM/18 FM presets
- SIRIUS Satellite Radio and iPod capabilities
- 40 watts x 4.5
- Preset EQ settings
- 2 RCA pre-outs
- Antishock CD buffer, J1171 marine ignition protection
- Subwoofer/CD changer control

MB QUART WRC-S1 & S2

Secondary Control Units

Remotely control your system and iPod! Compatible with all current MB Quart nautic head units with large, easy to read backlit display. Includes 6m cable.



KEY FEATURES

- Splashproof to IPX7 standard
- Designed to withstand salt and UV exposure

MB QUART SPEAKERS

Marine Midrange Loudspeakers

A range of high quality marine loudspeakers designed to withstand salt and UV exposure with corrosion resistant connectors and sealed solder joints. Titanium tweeters, 4 ohm impedance, 3-year warranty

NKA116 KEY FEATURES

- 6.5in with 0.5in tweeter
- 70W RMS, 140W peak
- 40Hz to 32,000kHz frequency response
- 4500Hz tweeter crossover



NKF692 KEY FEATURES

- 6 x 9in with 1in tweeter
- 60W RMS, 130W peak
- 50Hz to 25,000kHz frequency response
- 3900Hz tweeter crossover



MB QUART NWF254

10in Marine Subwoofer

- 100W RMS, 200W peak
- 30Hz to 300Hz response
- 4 ohm impedance
- Sensitivity: 86 dB
- Polypropylene cone
- Nautic crossover with protective sealing lacquer
- Gold-plated terminals and sealed solder joints



SEA-ME

Active Radar Target Enhancer

Increase the probability that your boat will be seen by other ships on their radar with this affordable active device. Unlike traditional passive radar reflectors which merely attempt to create a larger radar echo, Sea-me is an active system which receives a radar signal, amplifies it and re-transmits it. This ensures a stronger return signal and a more even strength around the full 360° azimuth.

KEY FEATURES

- Creates radar image equivalent to an object of 63'm max (34'm average)
- Up to 6 times the performance of standard passive radar reflectors
- Performance is less affected by heel than standard passive radar reflectors
- Operates at X Band (9.32-9.5GHz)
- Indicates when your vessel is struck by a radar pulse
- Small, light (410g) and easy to install
- Low power consumption

SUPPLIED WITH

Antenna, 24m cable, control box



SEA-ME DUAL BAND

Active Radar Target Enhancer

Designed to meet all the requirements of ISO 8729-2:2009 the Sea-Me Dual Band responds to radar pulses at both X and S bands. All ships over 3000 tons are required by law to carry both types of radar and many prefer to monitor S Band when in open waters because it is more tolerant of heavy rain and sea clutter

KEY FEATURES

- Enhances X and S Band radar signals
- Meets the applicable requirements of the Radio and Telecommunications Terminal Equipment Directive and of ETSI Standard 302 752
- Up to 6 times the performance of standard passive radar reflectors
- Performance is less affected by heel than standard passive radar reflectors
- Indicates when your vessel is struck by a radar pulse
- Small, light (410g) and easy to install
- Low power consumption

SUPPLIED WITH

Antenna, 24m cable, control box

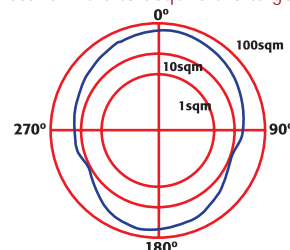


Tech info

Why Fit an Active Radar Target Enhancer?

At night, the range of the masthead light of a sailing yacht of less than 20m is only 3nm and of a sailing yacht of less than 12m only 2nm - a ship making 20kts will cover 3nm in only 9 mins. As they get bigger, travel faster and have lower manning on the bridge, the risk of collision or a close encounter increases. Therefore it's vital that small craft return a strong radar signal if they are to be seen in plenty of time for avoiding action to be taken by ships.

Consistency is also important since most ships today are fitted with ARPA (Automatic Radar Plotting Aid) which needs to obtain a return of 50% of scans if it is to acquire the target



Performance of the radar cross-section area of Sea-me

Turn to the back page for pricing and ordering info NOW!



Jeppesen Marine (C-Map)

Electronic Cartography

A closer look...

MAX '10

New up-to-date version of Jeppesen Marine Charts

When it comes to MAX '10, there's no comparison. Advanced features make cruising, sailing, and fishing easier, safer, and more fun. With the most accurate chart detail, versatile features and a wealth of important value-added data, we take your boating enjoyment to the MAX!

New 2010 packaging



**New plastic box
for chart storage
INCLUDED!**

The importance of Updates

Jeppesen Marine releases its fully updated mapping database 3 times per year

The Jeppesen Marine cartography is steadily updated with all the new editions of the official charts and with all the Notice to Mariner corrections released from the major National Maritime Authorities.

For further information on how to update your cartridge visit our website jeppesen.com/lightmarine

Date of Update



Check the date of your update on the label of your C-Map by Jeppesen chart.

PC-Planner

Rewind your adventure...
Plan the next one

Whatever marine activity you are involved in, PC-Planner makes it easier. Plan next summer's cruise, view your course from the weekend regatta, and locate a wreck to dive or fish on.

- Plan
- View
- Archive
- Work



visit our website jeppesen.com/lightmarine

C-MAP by Jeppesen charts are available in the following technologies, sizes and medias

NT+

Local, Wide



C-CARD



FF-CARD



DVD

MAX '10

Local, Wide,
MegaWide, Continental



C-CARD



SD-CARD



DVD

Easy Plug & Play

C-MAP MAX

Electronic Charting System



MAX is C-Map's dynamic and interactive chart technology that has revolutionised the way electronic charts look and behave. MAX brings new life to the electronic chart, combining unparalleled levels of chart accuracy and detail, striking presentation and a huge collection of new value added data.

KEY FEATURES



Embedded photos & coastal land mapping



Fully animated worldwide tide & current database



Aerial photography of ports and marinas



Perspective view - "rolling road" chart display



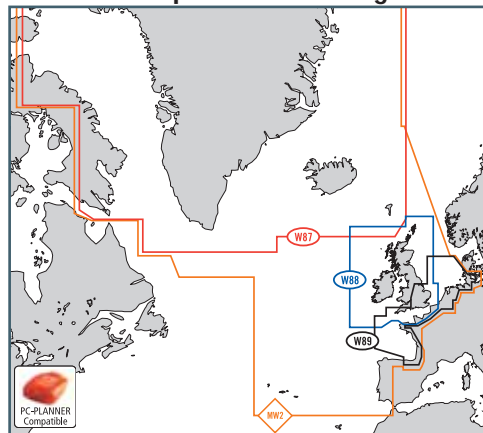
We accept most major credit and debit cards



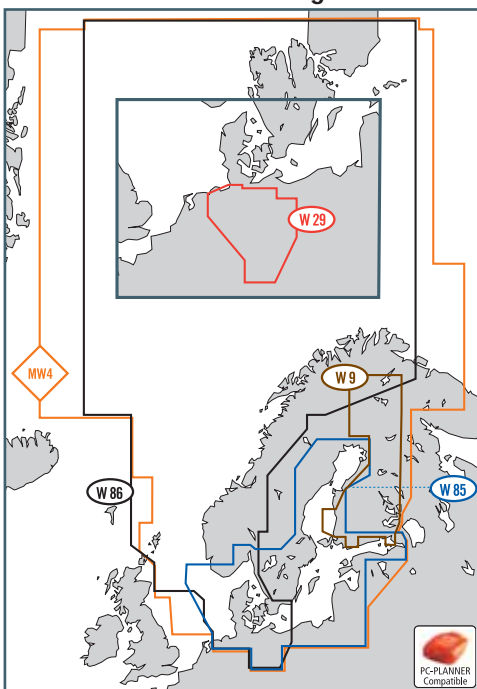
Electronic Cartography

C-MAP MAX WORLDWIDE CHART COVERAGE

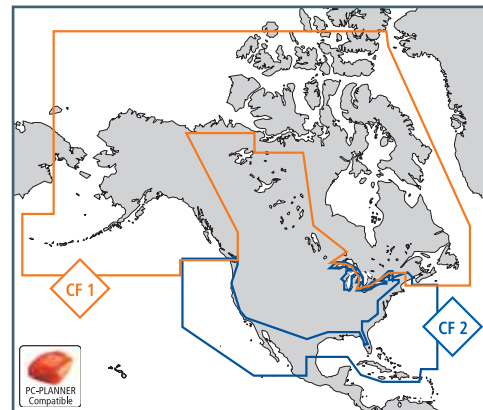
Atlantic European Coasts Megawide



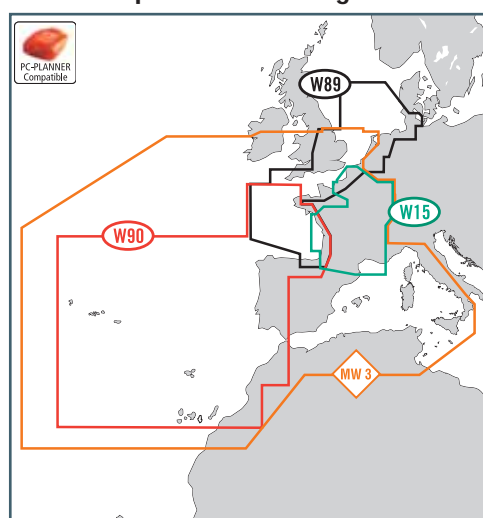
Baltic & Scandinavia Megawide



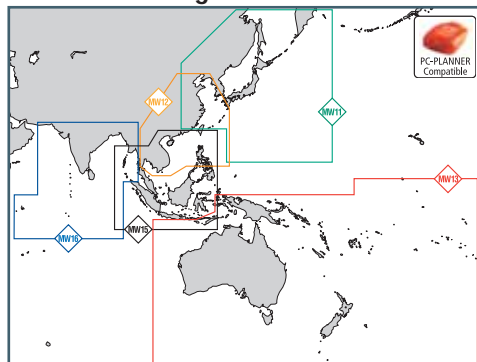
USA Continental



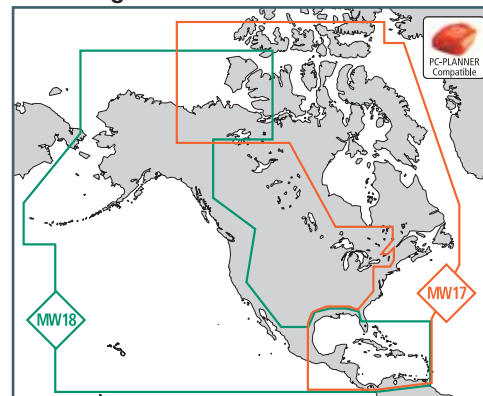
West European Coasts Megawide



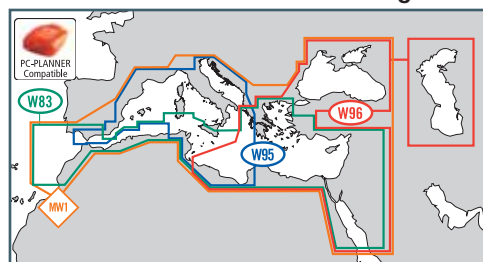
Australasia Megawide



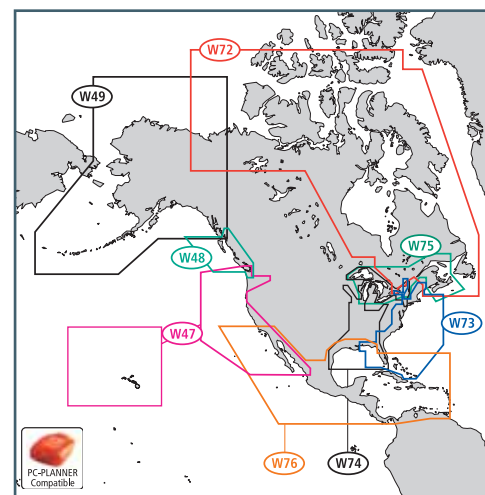
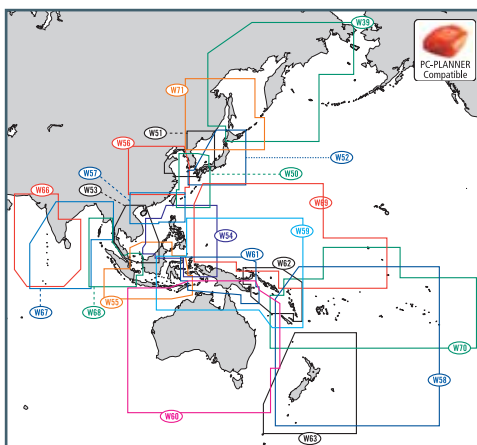
USA Megawide



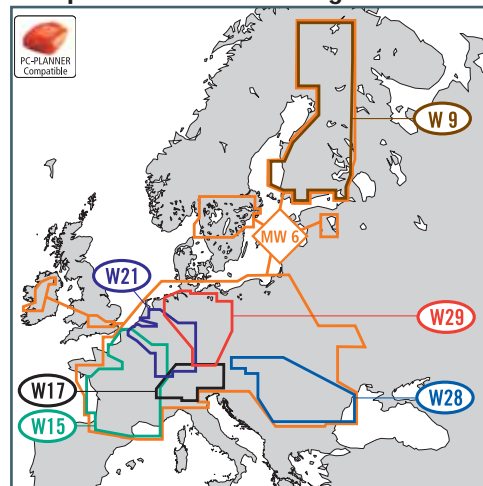
Mediterranean & Black Sea Megawide



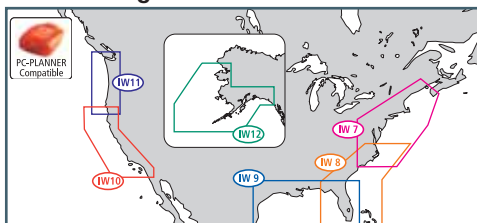
Australasia Wide



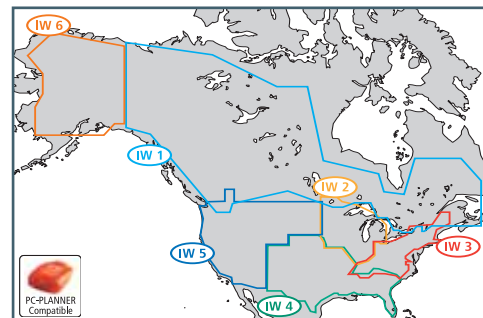
Europe Inland Waters Megawide



USA Fishing



USA Lakes



Please note that this is just a small selection of the most popular cruising areas covered by C-Map. If you are looking for a region not shown here, please call us for more details or check our website.

Turn to the back page for pricing and ordering info NOW!



NAVIONICS

Electronic Cartography

Navionics offers two main chart types, the popular and established Gold and the multi-award winning top of the range Platinum+. Both based on Navionics exclusive vectorised fully Seamless technology, providing clearly legible charts without clutter, holes or gaps. Gold charts are available in huge XL9-size coverage areas, while the Platinum+ is available in the great value XL3-size. All plotters compatible with Navionics charts will accept standard and expandable cartridge formats, such as Compact Flash or Secure Digital. Visit the Navionics website at www.navionics.com to access the list of compatible plotters with corresponding product line and media.

NAVIONICS PLATINUM+

Electronic Cartography

2D or Multi-D? From detailed 2D base charts to top-down satellite photo overlays and 3D view, Platinum+ allows you to navigate in multiple dimensions for the ultimate in situational awareness. And now Platinum+™ driven by Navionics TurboView™ Technology offers you the most powerful multi-dimensional charting experience since Platinum's introduction in 2005. Experience total immersion in the multi-dimensional world of Platinum+ on TurboView Certified Plotters. The embedded Navionics TurboView Charting Engine dramatically increases the functionality and display capabilities of GeoNav G12, Simrad NSE, Lowrance HDS and Raymarine E-Series Widescreen plotters to provide boaters with the ultimate charting experience.

TURBOVIEW FEATURES

- Seamless, fluid pan and zoom, rotation and pitch functionality, much like a flight simulator!
- Seamless transition between 2D and 3D views
- Real-time overlay of navigation data on 3D profiles
- Depth and elevation shadowing
- High-speed flythrough, detailed aerial photo overlay

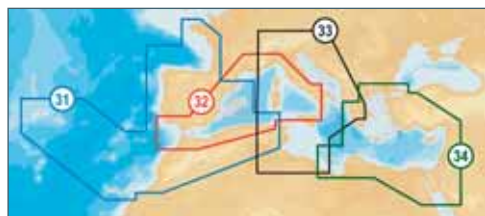
KEY FEATURES

- Topdown photo overlay, highest resolution available
- 3D bathymetric views
- Exclusive high-definition fishing detail for US waters
- Panoramic port photography in full-view XGA
- Selectable colour shaded contours
- Full seamless & intelligent clarity technology™
- Complete geo-referenced coast pilot book
- Points of interest including enhanced port services, hazards, wrecks and much more

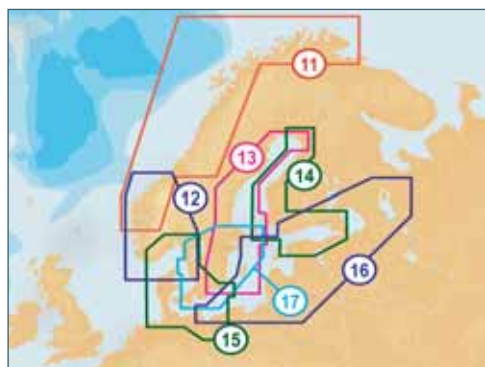
Platinum+ XL3 - Atlantic



Platinum+ XL3 - Mediterranean



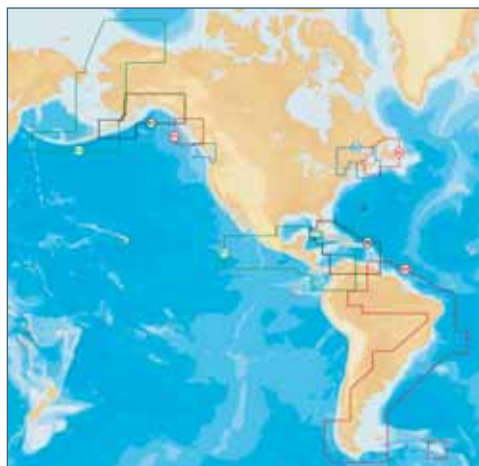
Platinum+ XL3 - Scandinavia



Platinum+ XL - Americas



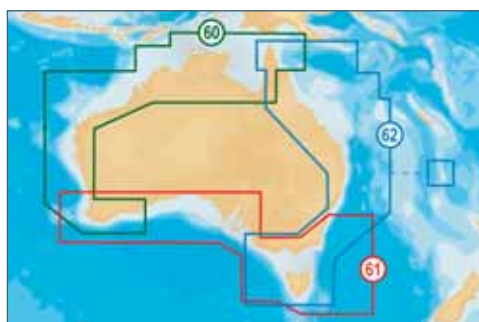
Platinum+ XL3 - Americas



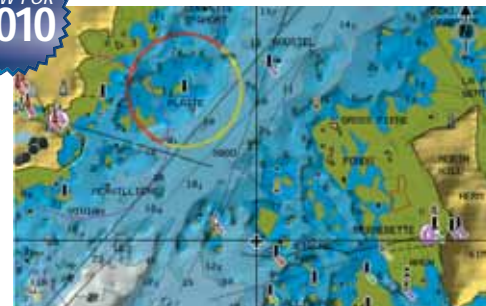
Platinum+ XL - Oceania



Platinum+ XL3 - Oceania



NEW FOR
2010



Platinum+ Shaded Contours with TurboView



Panoramic Port Photographs



Platinum+ High Res Aerial Pictures with TurboView



Improved 3D bathymetric views



TurboView high-speed fly-through with detailed aerial photo overlay



We accept most major credit and debit cards



Electronic Cartography

NAVIONICS XL9 GOLD

Electronic Cartography

Gold charts bring electronic cartography a step closer to the official paper charts. Bathymetries are easily distinguishable thanks to the different colour shadings, light sectors of lighthouses and real forms and colours of buoys. The boater can select the contour colours to differentiate and identify shallow and hazardous areas as well as difficult-to-anchor, deeper water.

KEY FEATURES

- Animated Tide & Current database.
- Best fishing & cruising detail
- Comprehensive database of wrecks for fishermen, only with Navionics charts
- Huge coverage for yachtsmen and power-boaters
- Paper like chart detail
- 18 zoom levels
- User selectable safety contours
- Spot soundings
- Port plans and services
- Full Seamless Technology

Gold XL9 - Worldwide Coverage

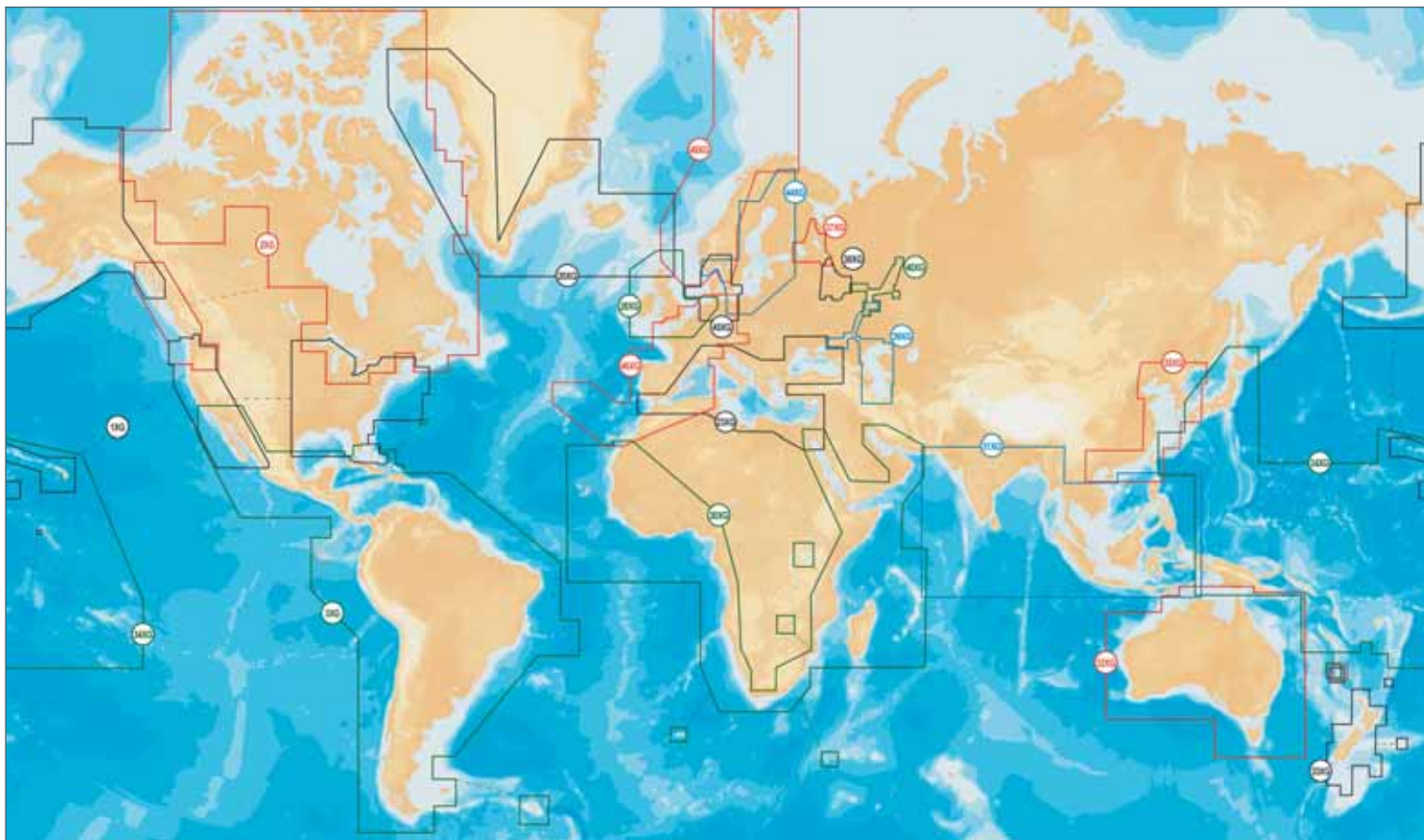


Chart Code	Title	Description
20XG	GREENLAND & ICELAND	Greenland West, Greenland South, Iceland. From Northumberland Oe to Kap Farvel to Nathorst Fjord. Including Scoresby Sund, Disko Bugt, Melville Bugt, Nuuk in Greenland and Faroe Islands, Shetland Islands, Orkney Islands, Hebrides and North West Scotland from Kyle Rhea to Helmsdale.
23XG	MEDIT. & BLACK SEA	Entire Mediterranean Sea, Black Sea and Dnieper River.
28XG	UK-IRELAND & HOLLAND	United Kingdom, Ireland, English Channel, Belgium and The Netherlands.
30XG	AFRICA & M. EAST	Western Sahara, Mauritania, Senegal, Gambia, Guinea Bissau, Guinea, Sierra Leone, Liberia, Ivory Coast, Ghana, Benin, Nigeria, Cameroon, Gabon, Congo, Angola, Namibia, South Africa, Tanzania, Kenya, Somalia, Madagascar, Comoros, Aldabra Islands, Seychelles, Socotra, Lake Kariba, Red Sea, Persian Gulf. Including Cape Verde Islands, Gulf of Guinea, Gough Island, Tristan da Cunha, Gulf of Oman, Gulf of Aden, Victoria, Albert & Kivu Lakes.
37XG	UPPER VOLGA RIVER	Saint Petersburg to Upper Volga River. Including Lake Onega and Lake Ladoga.
38XG	MOSCOW AREA	Rybinsk waterstorage, Volga river, Moscow-Volga Canal, Oka and Moskva rivers.
39XG	LOWER VOLGA RIVER	Volga river from Samara, Tolyatti to Eysk in Sea of Azov, Volgograd to Astrakhan and total Caspian sea.
40XG	CENTRAL VOLGA RIVER	Volga river from Nizhny to south side up to Balakovo. Kama river from Kazan to north side up to Solikamsk and Belaya river from Agidel to Ufa.
44XG	BALTIC SEA	Entire Baltic Sea, Gulf of Bothnia, Peipsi lake, Berlin Lakes. Entire Sweden including Lakes, Norway South up to Flekkefjord. Finnish Lakes including Inarijärvi, Porttipahdan Tekojärvi, Lokan Tekojärvi, Mielokjärvi, Emijärvi, Vahonselkä, Mourujärvi, Yli Kitka, Kiantjärvi, Vuokkijärvi, Oulujärvi, Nuasjärvi, Ontojärvi, Lentua, Pielinen, Koitere, Hoytiainen, Viinijärvi, Pyhaselkä, Orivesi, Puruvesi, Pihlajavesi, Haukivesi, Kallavesi, Juojärvi, Puula, Kyyvesi, Onkivesi, Pyhäjärvi near Sortavala City, Saimaa, Puruvesi, Pihlajavesi, Pellavesi, Nilakka, Pyhäjärvi near Iisalmi city, Konnevesi, Kolima, Kivijärvi, Keltelä, Pajanne, Vuohijärvi, Langelmavesi, Vanajavesi, Lappajärvi, Pyhäjärvi near Rauma City, Lohjanjärvi-Vihti. Excluding Bornholm.
45XG	SKAGERRAK & KATTEGAT	Denmark, Germany (From Delfzijl to Kolobrzeg in Poland), Norway from Flekkefjord to Oland south in Sweden. Including Skagerrak, Kattegat, Oslo, Copenhagen, Göteborg, Bornholm, Sjælland, Lolland, Fyn and German Lakes
46XG	EUROPE WEST	Iberian Peninsula, France, English Channel and Sardinia. European inland waters (French and Holland canals, Switzerland/Italian lakes, Lake Balaton, Valence, Tisza, River Rhine/Main, Berlin Lakes, Mittellandkanal, Dortmund-Ems-Kanal, Austrian Danube River)
49XG	NORWAY	Norway including Svalbard Islands, Shetland Islands, Sweden West from Strömstad to Varberg, Vättern, Vänern and Mjersa Lakes.
31XG	INDIAN O-S CHINA SEA	Pakistan, India, Sri Lanka, Bangladesh, Burma, Thailand, Malaysia, Singapore, Cambodia, Vietnam, Maldives, Solomon Islands, Diego Garcia, Philippines, Brunei, Indonesia. Including Selat Sunda, Strait of Malacca, Gulf of Thailand, Andaman and Nicobar Islands, Bay of Bengal and Arabian Sea.
32XG	AUSTRALIA	Australia, including Norfolk Islands.
33XG	NEW ZEALAND	New Zealand including Kermadec Islands and Norfolk Islands.
34XG	PACIFIC IS. & JAPAN	Ryukyu Islands, Sakishima gunto, Kita-Io Shima, Ito Shima, Minami-Io Shima, Mariana Islands, Caroline Islands, Babel Thuap, Helen Channel, Merir Island, Pulo Anna, Sonsorol Islands, Marshall Islands, Nauru, New Caledonia, New Hebrides, Fiji, Tonga, Samoa, Wallis & Futuna, American Samoa, Niue, Tokelau Islands, Kiribati, Cook Islands, French Polynesia, Pitcairn Island, Iles Loyauté, Santa Cruz Islands, Phoenix Islands, Line Islands, Norfolk Islands, Solomon Islands, New Britain, Admiralty Island, Papua, New Guinea, Doberai Pen, entire Islands of Hawaii, Maui, Kahoolawe, Lanai, Molokai, Oahu, Kauai, Niihau, Nihoa, Necker I., Gardner Pinnacles, Laysan Island, Neva Shoal, Pearl and Hermes Atoll, Midway Islands, Kure Atoll, Johnston Atoll, Kingman Reef, Palmyra Atoll, Maro Reef, French Frigate Shoals, Kholsmsk in Russia and Japan.
35XG	S. CHINA SEA - JAPAN	South China Sea, East China Sea, Yellow Sea, Sarawak, Philippines, Vietnam, China, Taiwan, North Korea, South Korea, Japan, Vladivostok in Russia.

NAVIONICS NAVPLANNER

PC-Based Chart Viewing System

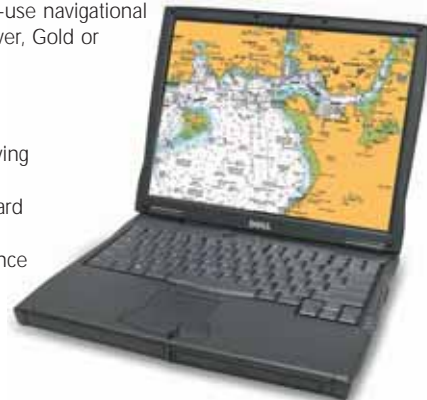
An easy-to-use software package that allows you to plan your navigation on a PC at home and transfer it to your chartplotter on your chart card. Plan your route on PC using NavPlanner's easy-to-use navigational tools with Navionics HotMaps, Silver, Gold or Platinum Charts.

KEY FEATURES

- View the chart on your PC
- Load, create and edit routes, saving them to your chart card
- Transfer data directly from the card to the plotter
- 16 zoom levels, measures distance and bearing, go-to-port function, and many other features

SUPPLIED WITH

Navionics USB chart card reader



Turn to the back page for pricing and ordering info NOW!

DigitalYacht

Marine PC Systems

DIGITALYACHT AQUA STANDARD PC

Compact 12v Marine PC

Aqua Standard is designed as a general purpose, great value on board PC. With the latest ultra low power, fanless, Intel Atom N270 processor (2.5W) the complete Aqua PC system typically consumes just 20W but provides all of the performance needed to run navigation software, e-mail, surf the web, etc. All Aqua PCs can be connected directly to the boat's 12v or 24v DC supply with no inverter and all models can be switched on/off either from the front panel switch or from a remote push button switch (not supplied). Can be supplied with optional built-in Hi-Power Wi-Fi adaptor or built-in NMEA 2000 Gateway.

KEY FEATURES

- 12/24v DC, ultra rugged, fanless marine PC
- Compact - measures just 30 x 27 x 7cm!
- Easy mounting and installation
- Fitted with CD/DVD RW
- Supplied with Windows 7 (on UK versions) - Linux version also available
- 2 x NMEA Ports and 3 x USB Ports
- Intel Atom N270 processor for low power consumption and fast computing
- 160GB hard drive fitted in Anti-Vibration mount
- All electronics conformally coated for added protection against salt water



AQUAMEDIA PC

All the core features of the Aqua Standard PC but designed as a powerful marine Media Centre PC, with BluRay drive, True HD 1080P movie playback, Digital TV Tuner, 8 USB ports, 250GB hard drive and 4GB of RAM. Featuring the latest low power Intel Atom 330 dual core processor the complete system typically consumes just 35W but provides all of the performance you need for a full function HD Media Centre PC.

AQUANAV PC

Based on the Aqua Standard PC and with all its core features, the AquaNav PC is designed as a powerful marine navigation PC, with two NMEA ports, a super fast 64GB solid state hard drive, 2GB of RAM, inbuilt dual channel AIS receiver, dedicated GPS Antenna and CD/DVD RW drive. Standard interfaces include three USB ports, a VGA and DVI port allowing the system to drive up to two compatible LCD monitors. The PC is pre-configured and interfaced so the GPS and AIS work straight out of the box.

SUPPLIED WITH

0.75m power/IO cable, bulkhead and desktop mounting brackets, Mini USB Keyboard with integral 2 port USB hub, Driver CD. Aqua Nav PC also includes a navigation IO cable and GPS smart antenna

DIGITALYACHT SMARTERTRACK

Navigation Software

Ideal for anyone with a dedicated chartplotter using Navionics Gold, Platinum or Platinum+ chart cartridges or is new to electronic charting and wants simple to use PC navigation software with good AIS support. SmarterTrack turns your PC in to an invaluable navigation tool that overlays your position and AIS targets on the accurate and detailed Navionics electronic charts. AIS support includes Colour Coded Targets, User selectable labelling of targets, fully configurable CPA and TCPA alarms, visual indication of CPA, AIS targets drawn to scale and many other settings and features. Entering the route you wish to sail, checking the tides, confirming depths or navigational aids on the chart and a whole host of other routine navigational tasks can be performed simply and effortlessly.

KEY FEATURES

- Simple yet powerful PC Navigation software
- Excellent AIS support
- Full set of configurable Alarms
- Displays Tidal Height and Tidal Flow data
- All route and waypoint data created on SmarterTrack can be transferred to your dedicated chart plotter
- Displays all NMEA instrument data
- Can be used on any PC running Windows XP/Vista/7.



SUPPLIED WITH

Navionics USB cartridge reader, installation CD-ROM and manual

DIGITALYACHT WL500

On Board Wi-Fi Access System

WiFi range depends on many local factors but we've seen ranges of up to 6 miles with this low cost system! The WL500 has a compact, DC powered below deck mounted booster/modem and external hi-gain antenna. Even if your system already has WiFi access, this can be disabled and you can take advantage of the superior range and speed this system will offer!

KEY FEATURES

- Ideal solution for permanent installation and new builds
- Powerful 500mW (1w erp) output (check local licensing conditions)
- Plug'n'play setup automatically detects WiFi points within range
- Supports 802.11b/g protocols as well as WEP and WPA encryption
- Windows XP / Vista / 7, Mac OS X and LINUX compatible

SUPPLIED WITH

2m USB cable, 10m coax cable, driver CD and antenna



DIGITALYACHT WL50

WiFi Booster

Compact all-in-one system with a 60cm antenna which should boost your Wi-Fi range to over 0.5 mile in perfect conditions. Quick and easy to install with four suction cups, the WL50 is an ideal temporary mount Wi-Fi solution for boats, caravans, RVs, etc. Simple "plug and play" connection to a PC with 5m USB cable and comes with all software and drivers for Windows XP, Windows Vista, Mac OS X 10.3 (and higher) and LINUX.

KEY FEATURES

- Ideal solution for temporary installation
- Simple Plug and Play USB connection
- 30mW Wi-Fi modem and high gain (8dBm) omni-directional antenna
- 4 x Suction Cup mount
- USB Bus Powered



SUPPLIED WITH

Mounting Suction Cups, Mounting brackets, 5m USB cable, Driver CD

DIGITALYACHT WL400

High Power WiFi System

Internet on board lets you download the latest weather or chart updates as well as having a mobile office, but in general if you're using an internal Wi-Fi adaptor typically found on a notebook, you'll be lucky to find the signal at the end of the dock! Wi-Fi range depends on many local factors but we have seen ranges of up to 3-4 miles with this low cost system, so if you plan to access the internet whilst on board, the WL400 could be the solution for you! The all-in-one system features a 1m antenna and connects to your PC via USB using a plug 'n' play driver disk supplied for Windows XP/Vista/7, Mac OS X 10.3 (and higher) and LINUX operating systems. It supports 802.11b/g protocols as well as WEP and WPA encryption. Even if your system already has Wi-Fi access, this can be disabled and you can take advantage of the superior range and speed that this system can offer you.

KEY FEATURES

- Ideal for semi-permanent installation
- Simple Plug and Play USB connection
- 200mW Wi-Fi modem and high gain (12dBm) omni-directional antenna
- Industry standard 1" x 14 TPI thread mount
- Integrated 5m USB cable - can be extended with optional 5m USB Active Extender
- USB Bus Powered

SUPPLIED WITH

5m USB cable, Driver CD

DIGITALYACHT GPS105/110

12 Channel GPS Sensor

High performance active WAAS/EGNOS GPS antennas. Ideal for use with Digitalyacht PCs, these antennas can be used with any system where position input is required.

KEY FEATURES

- GPS105 with NMEA output
- GPS110 with USB connection
- Typical accuracy less than 5m



We accept most major credit and debit cards



DIGITALYACHT ANT200

AIS Receiver

All in one AIS Smart Antenna for RIBs, sports boats and small yachts, or where dry space is limited. Connect 12v or 24v and the ANT200 will receive AIS targets up to 10 miles your boat. Ideal for use with existing AIS compatible chart plotters - connect the GPS NMEA0183 output to the ANT200 and it will automatically multiplex the slower GPS data with the high speed AIS data and transmit everything on one high speed NMEA output, ideal for use with chartplotters with only one NMEA input.

KEY FEATURES

- High performance dual channel AIS receiver for use with existing plotter and radar systems
- Multiplexed NMEA input to single NMEA GPS+AIS output
- Simple to install, industry standard 1in x 14 TPI thread mount

SUPPLIED WITH

15m Power/Data cable



NEW FOR
2010

DIGITALYACHT SPL250

AIS Antenna Splitter

Removes the need for a separate VHF antenna for an AIS transponder and allows a single antenna to be shared with a VHF radio. This is the only VHF antenna splitter suitable for use with two transmitting devices. Compatible with all Class B AIS transponders and AIS receivers.

KEY FEATURES

- Saves installation time and cost
- Guarantees priority to VHF voice and DSC radio operation even if the splitter power supply fails
- Additional output for FM radio antenna connection

SUPPLIED WITH

RF leads for connection with AIS transponder, VHF radio and a power lead



DIGITALYACHT SMARTERCHART 500 SERIES

5in Chartplotter, Chart Sounder & Combination Chartplotter / AIS

The **SmarterChart 500 Chart Plotter** features an internal 50 channel GPS receiver and all the features and functions you need for making fast and effective navigation decisions from the helm. With a 320 x 240 pixel 5in sunlight viewable LCD display, it's fully compatible with C-Map MAX charts and supports advanced features such as free downloadable weather overlays and forecasts, 3D perspective view, photos, tidal heights and currents, as well as the powerful Guardian Alarm, which checks your route for potential charted dangers.

The **SmarterChart 500 Sounder Combo** adds a built-in 200Khz/50Khz dual frequency sounder to the chart-plotting features of the SmarterChart 500 Chart Plotter and provides all of the depth and seabed information you could need for Fish/Wreck Finding, Anchoring or simply navigating safely in shallow waters.

The **SmarterChart 500 AIS Combo** is the world's first 5in chart plotter to feature a built-in AIS receiver. Coupled with an internal 50 channel GPS receiver, it effortlessly plots your position on the electronic chart and overlays all AIS targets within range of your boat.



KEY FEATURES

- Fully C-Map MAX compatible (single C-Card slot)
- Ultra fast chart redraw, pan and zooming
- Can be connected to 12v or 24v DC supply
- Inbuilt worldwide chart down to 2nm detail
- 50 channel internal GPS (external GPS option)
- Flush, bracket and helm pod mounting options
- IP56 rated water resistant

- **AIS Combo** - High sensitivity, dual channel AIS receiver
- **Sounder Combo** - 200Khz/50Khz dual frequency transom mount speed/depth/temp transducer

SUPPLIED WITH

Mounting brackets, 1m Power/Data cable, Sun Cover



DIGITALYACHT AIS200/AIS200PRO

Black Box AIS Receivers

Entry level AIS receivers for use with existing AIS compatible chart plotters. Connect to an existing VHF antenna via a splitter or to a dedicated AIS antenna to receive all AIS targets within 20 miles of your boat. The **AIS200PRO** offers plug and play PC connection via USB using standard Windows XP/Vista/7 drivers. Also compatible with Mac OS X and LINUX Kernels since V2.4.20.

KEY FEATURES

- Compact black box solution
- High Speed NMEA output (38,400 baud)
- Requires VHF antenna or dedicated AIS antenna (available as optional accessory)
- Multiplexed NMEA input for single NMEA GPS+AIS data output at 38,400 baud

SUPPLIED WITH

Mounting brackets, 1m Power/Data cable, 1m USB cable (AIS200PRO only)



NEW FOR
2010

DIGITALYACHT AIS400

Black Box AIS Receiver & GPS

Powerful dual-channel AIS receiver with an integral high performance GPS antenna. Plug and Play USB interface to a PC, it is supplied with Windows ProAIS software allowing it to be configured and tested after installation.

KEY FEATURES

- All the features of the AIS200PRO
- High Speed NMEA output (38,400 baud)
- Requires VHF antenna or dedicated AIS antenna
- Upgrade available to an AIT1000 Transponder

SUPPLIED WITH

Mounting brackets, 0.75m Power/Data cable, 0.75m USB cable, GPS Antenna with 7.5m cable, ProAIS software on CD



NEW FOR
2010

DIGITALYACHT AIT1000

Black Box AIS Class B Transponder

Ultra-slim Class B Transponder with dual NMEA and USB connection, the AIT1000 is an ideal solution for all light marine vessels up to 300 tons. Configuration of your vessel's fixed data is made easy with the Windows proAIS software supplied. The unit can be connected to a PC running suitable navigation software or a chartplotter and will receive data from all AIS targets within range as well as transmitting your own AIS data, so other AIS equipped vessels know where you are. Simple plug and play USB connection to a PC using standard Windows XP/Vista/7 drivers. Also compatible with Mac OS X and all LINUX Kernels since V2.4.20. The AIT1000 outputs AIS and GPS data together on both the USB and NMEA ports - perfect for connection to a chart plotter with only one NMEA input.

KEY FEATURES

- High-performance Class B AIS Transponder
- Remote silence button option
- Built-in GPS receiver (ideal as a backup GPS)
- Plug and Play USB interface to a PC
- High Speed NMEA output (38,400 baud)
- Comes complete with low profile GPS antenna
- Requires VHF antenna or dedicated AIS antenna (available as optional accessory)

SUPPLIED WITH

Mounting brackets, 0.75m Power/Data cable, 0.75m USB cable, GPS Antenna with 7.5m cable, ProAIS software on CD



NEW FOR
2010

McMURDO SMARTFIND E5

406MHz EPIRB

The Smartfind E5 is an ultra-compact 406MHz EPIRB. Once removed from its Carrysafes mounting bracket, the unit can be activated either manually or automatically by immersion in water. A hydrostatic release casing is also available.

Smartfind EPIRBs are programmed with a unique serial number which must be registered with the national authorities. Where permitted by these authorities, beacons can be re-programmed with the vessel's MMSI or Radio Call Sign.

KEY FEATURES

- Stylish and compact
- GMDSS compliant
- 121.5MHz homing transmitter
- Non hazardous battery for safe and easy transportation
- High brightness LED flashing locator lights
- Comprehensive diagnostic and self-test facilities
- 6 year battery life

SEEN IT
FOR LESS?
WE WON'T BE
BEATEN ON
PRICE!



McMURDO SMARTFIND G5

406MHz GPS EPIRB

Ultra-compact 406MHz EPIRB with an inbuilt 12 channel GPS giving location accuracy of less than 30m. Supplied with a Carrysafes mounting bracket, the G5 can be activated manually or automatically by immersion in water. A hydrostatic release casing is also available.

Smartfind EPIRBs are programmed with a unique serial number which must be registered with the national authorities. Where permitted by these authorities, beacons can be re-programmed with the vessel's MMSI or Radio Call Sign.

KEY FEATURES

- Inbuilt 12 channel GPS
- GMDSS compliant
- 121.5MHz homing transmitter
- Non hazardous battery for safe and easy transportation
- High brightness LED flashing locator lights
- Comprehensive diagnostic and self-test facilities
- 6 year battery life

EDITOR'S
CHOICE



McMURDO FAST FIND 210

406MHz GPS PLB

Extremely compact and powerful PLB with a built in 50 channel GPS for additional pinpoint accuracy, further speeding up time of location. Once activated, Fast Find will continue to transmit for at least 24 hrs at a powerful 5W output, the 406 MHz transmission ensures that a call for help gets through whatever the conditions. Fast Find also includes a unique SOS LED flash light facility which is manually activated to further assist in speeding up recovery during night time rescues.

KEY FEATURES

- Extremely compact and lightweight
- 406 MHz international messaging and 121.5 MHz homing signal
- 50 channel integral GPS
- 5 year replaceable battery
- SOS Morse LED flash light
- Simple three-stage activation
- Minimum 24hrs continuous operation



McMURDO FASTFIND MAX G

406MHz GPS PLB

Handheld PLB with integral GPS featuring the same advanced technology found in the award winning Precision EPIRB. Designed using miniature components to fit into an ergonomically styled compact casing, it employs a simple 3 stage manual operation and features user replaceable battery packs. It is ideal for alerting the rescue services of an emergency during maritime, light aircraft and outdoor activities (where licensing allows).

KEY FEATURES

- Compact and lightweight
- 406MHz transmitter, 121.5MHz homing frequency
- Integral GPS receiver
- Battery life 5 years, transmission life 48 hrs



McMURDO FAST FIND 200

406Mhz PLB

All the features of the Fast Find 210, but without the internal GPS. Alert signal to rescue services within 90 mins, typical positional accuracy to within 3nm

McMURDO FASTFIND MAX

406Mhz PLB

All the features of the Fastfind Max G, but without the internal GPS. Alert signal to rescue services within 90 mins, typical positional accuracy to within 3nm.

BOTH MODELS SUPPLIED WITH

Battery pack, case and lanyard

McMURDO S4 RESCUE

SART

A 9GHz X-Band Radar transceiver for assisting air/sea ship or survival craft rescue operations in accordance with IMO GMDSS requirements.

KEY FEATURES

- Ship or survival craft use
- 96hr operation (standby mode)
- 5 year long life replaceable battery pack
- Audio/visual alarm
- Inbuilt test facility
- Internal/external mounting options

SUPPLIED WITH

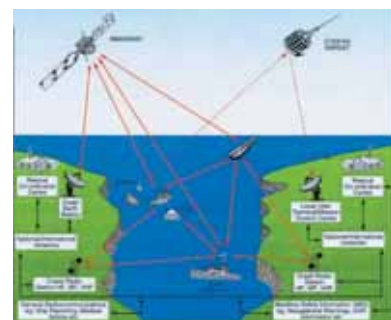
Mounting bracket, lithium battery



Find out more...

What is an EPIRB?

An Emergency Position Indicating Radio Beacon (EPIRB) is used to alert the Search And Rescue services in the event of an emergency. It transmits a coded message on the 406MHz distress frequency, which is detected by the COSPAS-SARSAT satellites. Emergency alerts are relayed to the closest Local User Terminal, which then forwards the information to the Mission Control Centre where the message is decoded. The distress details and vessel details (taken from the registration details) are then passed to the appropriate Rescue Coordination Centre who co-ordinate the relevant Search And Rescue authorities.



What's the difference between an EPIRB and a PLB?

Once the Search And Rescue service are in the area, they need to pinpoint your position directly. McMurdo's Smartfind E5 and G5 EPIRBs contain a 121.5MHz location transmitter for this purpose.

That's fine if you're with the EPIRB, but if you're in the water or have become separated from the vessel, you'll still want the rescue services to find you quickly and easily. A Personal Locator Beacon (PLB) transmits on the same 121.5MHz frequency, but is designed to be carried on your person - many quality foul weather jackets have a pocket on the sleeve for this purpose.

And what's a SART?

Generally deployed in the liferaft on a long pole, a Search And Rescue Transponder (SART) performs a similar function to a PLB, the difference being that a SART sends out a 9GHz signal which is detected by a ship's radar, appearing as a dotted line pointing to your position.

**WE CAN PROGRAM
INTERNATIONAL VERSIONS
OF ALL THESE EPIRBs -
VISIT OUR WEBSITE,
PART NO. ZMCMPROG**



We accept most major credit and debit cards



Navtex, AIS, Active Radar Reflector

MOERER WIB2 & WIB2B

PC Navtex Receiver

Innovative dual frequency 490kHz and 518kHz Navtex module with internal antenna no separate antenna required. No software installation is necessary, simply plug into a spare USB port to display the Navtex messages on your PC or laptop. The messages are stored in HTML format and can be viewed via web browser. Compatible with Windows ME, 2000, XP, Mac OS and Linux systems.

KEY FEATURES

- Simultaneous reception on both frequencies
- WIB2B includes inbuilt barograph
- Compact - only 90x57x23 mm
- Internal battery will power the unit for approx 3 days without PC
- The battery is recharged via the PC
- Non volatile memory for 762,000 characters
- Optional 12/24V or 230V charger



MOERER WIB2BX

PC Navtex Receiver

Navtex receiver with PC connection supplied with either a balun antenna adaptor (allowing a long wire or insulated stay to act as the antenna) or a dedicated compact active antenna. Sail boat owners will appreciate the ability to use a stay as an antenna without more masthead antenna clutter.

KEY FEATURES

- Connect to PC via USB interface
- True dual channel receiver - simultaneous reception of both frequencies
- Inbuilt highly accurate (to 0.1hPa) barograph with 7 day log



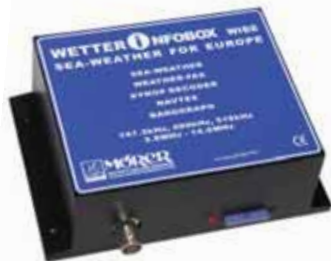
MOERER WIBE

PC Navtex/Weatherfax Decoder

Black box Navtex and Weatherfax receiver with USB PC connection that enables you to display Navtex messages and synoptic weather charts on your PC or laptop.

KEY FEATURES

- Receives HF Fax, NAVTEX (490 & 518KHz), SYNOP and sea weather forecasts
- Europe-wide weather information from Northwood and DWD
- Built in electronic barograph
- No software to install - works through your web browser
- Memory card slot to store images for viewing on PDAs or monitor
- Low power consumption
- Requires connection to external active antenna (optional) or insulated backstay



MOERER WIB2D

Navtex Receiver & Barograph

Smaller than a pack of cigarettes, the WIB2D incorporates a sophisticated dual channel Navtex receiver and built-in LCD display to show weather and navigation information. There is no need for an external antenna and it has a built-in rechargeable battery which can last up to three days. It can also be connected to a PC and the data viewed on screen or printed out. Its portable format is ideal for charterers or grabbing the latest weather and nav information whilst at home or in the office prior to setting sail.

KEY FEATURES

- Simultaneously monitors 490kHz & 518kHz
- Display of air pressure trends over the past 48 hrs
- Automatic message decoding
- Charge battery via USB lead, 12V DC cable or optional 230V charger
- Compact - only 103 x 62 x 26.5mm
- Supplied with USB connection/charge cable (optional 12 v and 220v chargers) and software for Windows 2000, XP, VISTA



VESPER AIS WATCHMATE

AIS Information Repeater

Compact AIS repeater with 5in 320x240 pixel backlit display. The AISWatchMate is a valuable tool to help avoid collisions at sea, displaying data from all AIS equipped vessels in your vicinity. It can simultaneously track up to 128 targets and audibly warn if a potentially dangerous situation exists. *Note: This is not an AIS receiver, an AIS receiver/transceiver is required to work in conjunction with this product.*

KEY FEATURES

- Graphical radar style display
- Ultra low power consumption
- Unique CPA plot shows whether target will pass ahead or behind to determine the best collision avoidance strategy
- Organises targets by priority for operation in high traffic areas
- Filters eliminate false alarms when navigating in crowded shipping areas
- Customisable profiles (anchored, harbour, coastal and offshore) tailor alarm settings to your situation
- Handles all types of AIS (class A and B, aids to navigation and safety messages)
- Two NMEA0183/RS232 inputs and one output
- AIS data can be output to PCs and chartplotters/combi displays
- External alarm output
- Waterproof to IP67/CFR46



Unique CPA plot

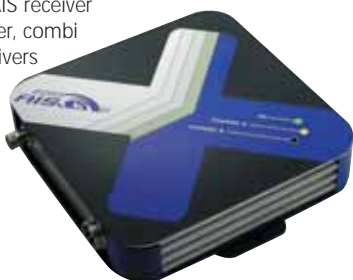
EASY AIS2

Black Box Dual Frequency AIS Receiver

Easy AIS2 is a dual frequency black box AIS receiver that makes integrating AIS with your plotter, combi display, PC or laptop simple. Improved drivers and matching allows cable lengths of up to 15m between the Easy AIS and chartplotter/PC without data loss.

KEY FEATURES

- Very low power consumption
- NMEA compatible
- GPS data in and out
- Robust metal case, only 140 x 140 x 36 mm



EASY SPLIT2

VHF Antenna Splitter

The EasySplit2 removes the need for a separate VHF antenna for an AIS transponder and allows a single antenna to be shared with a VHF radio.

KEY FEATURES

- Simplifies installation - no need for two VHF antennas
- VHF antenna input, VHF radio output, AIS output, FM radio output
- Same dimensions as EasyAIS2



ECHOMAX ACTIVE-X

X Band Radar Target Enhancer

New active radar reflector offering excellent performance. The unit receives a signal from a transmitting radar, amplifies it and returns a stronger signal. This increases the likelihood of detection reducing the risk of collision and helps to alert oncoming vessels of your position.

KEY FEATURES

- Reception frequency: X band 9.3 - 9.5GHz
- Exceeds ISO 8729-2 X band performance requirements
- Stand by current consumption: <15mA
- Typical 24 hour period 10 radar in the area: <.75Ah
- Performance response: 0° 111.36m², +/-10° of heel 78.96m², +/-20° of heel 20.80m²*
- Weight 327g excluding cable
- External alarm relay

* Size of boosted radar signal generated



Turn to the back page for pricing and ordering info NOW!



Standard Horizon

VHF Radios

STANDARD HORIZON GX1100E

Fixed DSC VHF Radio

Affordable ultra compact Class D DSC VHF Radio with an advanced die-cast chassis puts all the information you need right at your fingertips. Channel naming allows you greater ease of use and better channel recognition. Position, date and time are also displayed when interfaced with a GPS receiver. Submersible JIS7 / IPX7

KEY FEATURES

- Large clear dot matrix display
- Programmable Scan, Priority Scan, Dual Watch
- ATIS compatible
- NMEA in and out connections



STANDARD HORIZON GX1500E

Fixed DSC VHF Radio

Compact VHF with one of the largest displays in a radio of this size. Add optional CMP25B or VH-310 remote mic to become a complete dual station radio with the option to communicate and send a DSC distress call from two onboard locations.

KEY FEATURES

- Priority scan and dual watch
- Customisable channel naming
- Versatile user-programmable scanning
- Privately poll and display another vessel's position
- Waterproof front panel (IPX7)
- Position, date and time displayed when interfaced with a GPS or chart plotter



STANDARD HORIZON CMP30

RAM3 Second Station Mic

This submersible remote has an oversized LCD display and backlit keys. It operates as a second station to the radio allowing full control of the VHF at the flybridge, in the cockpit, tower or location of your choice.

KEY FEATURES

- Control all VHF functions including PA, foghorn, DSC
- Inbuilt distress alert button
- Display shows channel names and repeats GPS information
- Also controls AIS and waypoint functions when used with the GX2000E and GX2100E



SUPPLIED WITH

Bulkhead socket assembly, mounting clip

STANDARD HORIZON HX280E

Waterproof Handheld VHF Radio

Compact, rugged submersible handheld featuring all International, USA and Canadian channels and a highly legible LCD display with automatic backlight. The preset key allows you to recall the 10 most frequently used channels. Standard Horizon are so confident of the HX280E's waterproof integrity and reliability that they are offering a three year no quibble free of charge "repair or replace" guarantee if it fails for any reason.

KEY FEATURES

- Dual Watch
- Battery charge level indicator
- 16hr duty cycle from 1650mAh Li-Ion battery
- Standard three year guarantee

SUPPLIED WITH

1650mAh Li-Ion battery pack, belt clip



KEY FEATURES

- Complete control of radio functions
- Intercom facility between radio and other remote stations
- CT-100 7m extension cable available

SUPPLIED WITH

Wall mount cradle, routing cable, waterproof panel mount connector

STANDARD HORIZON GX2000E & GX2100E

Fixed DSC VHF Radio

Compact AIS enabled DSC VHF's with large, clear 1.8in dot-matrix displays. The GX2000E accepts data from an external AIS receiver via NMEA, the GX2100E has its own built-in dual channel AIS receiver. When connected to an external GPS, both models can store up to 100 waypoints, which can be selected and navigated to using a unique compass display. The display will also give all the usual GPS information about speed, course and bearing to a waypoint. Both models feature a powerful 30 Watt PA/loud hailer that is pre-programmed with fog signals. Both models are compatible with the CMP30 remote access mic.

KEY FEATURES

- AIS targets displayed in a radar style format*
- AIS info - MMSI, call sign, ship name, bearing, distance, speed and course*
- Closest Point of Approach (CPA) alarm
- Make a DSC call to a specific AIS vessel simply by selecting the target and pressing the call button - no need to enter the MMSI number
- Position polling, ideal for flotillas and fishing fleets
- Output AIS data to chartplotters etc via NMEA
- ClearVoice noise cancelling speaker microphone
- Rugged die cast chassis, waterproof to JIS7 / IPX7

*Requires an external AIS input with the GX2000E



STANDARD HORIZON HX500E

Waterproof Handheld VHF Radio

Submersible handheld VHF that has all the features of the HX280E with the option of using external speaker microphones and headsets via the waterproof accessory socket. Now with Lithium Ion battery pack for longer life.

KEY FEATURES

- Selectable transmit power
- 700mW loud audio
- VOX hands-free operation with optional VC-24 headset

SUPPLIED WITH

Li-Ion battery pack, 12v overnight charger, cigarette lighter cable, belt clip



STANDARD HORIZON HX750E & HX760E

Waterproof Floating Handheld VHF Radio

Rugged handhelds with an inbuilt thermometer, SOS strobe light and 6W transmit power. Features programmable scan, priority scan, dual watch and an external speaker mic connector. Can be powered using standard AAA drycell batteries in an emergency using the optional FBA-38 adaptor. The HX-760E can also be used with an optional Bluetooth headset.

KEY FEATURES

- Waterproof and floats
- External speaker mic jack
- Preset key (10 channels)
- 700mW audio output

SUPPLIED WITH

1150mAh Li-Ion battery pack, mains charger and belt clip



HX-760E with optional BH2 Bluetooth headset



We accept most major credit and debit cards



STANDARD HORIZON CP180 & CPF180

5in Chartplotter and Chart Sounder

These superb 5in colour units set new standards for small chartplotters. Available as a chartplotter or a combination chart sounder with inbuilt 600W dual frequency fishfinder, both models are packed with features normally reserved for much bigger, more expensive units including AIS integration - connect an AIS receiver to display position, speed and course of commercial vessels directly on the chart screen!



KEY FEATURES

- CP180 - colour chartplotter
- CPF180 - inbuilt 600W 50/200kHz fishfinder
- External or internal 50 channel GPS antenna
- 3000 waypoints, 50 routes, 10,000 marks
- 2nm worldwide basemap
- 1 NMEA input and 2 outputs

- Dual chart window with independent zoom
- VHF DSC polling capability
- Route Check reviews and alerts to hazards that may affect navigation along the way
- Radar integration
- AIS integration

SUPPLIED WITH

50 channel GPS, mounting bracket, flush mount kit

STANDARD HORIZON FF525

Dual Frequency Fishfinder Module



Black box 50/200kHz fishfinder module for the CP180, CP300 or CP500 chartplotters.

KEY FEATURES

- Dual frequency 50/200kHz
- Fish symbols or coloured echo
- Up to 4 x zoom
- White line distinguishes between fish and seabed
- Sensitivity time control reduces surface clutter
- Fish alarms
- Choice of transducers - Xducer ID detection system automatically selects the power output and configures the parameters to suit the transducer

SUPPLIED WITH

Transducer supplied separately and must be specified

Tech info

Sitex Radar Scanners

To add radar functionality on your Standard Horizon chartplotter, you simply need to add a Sitex radar scanner -

Part No.	Size	Power	Type	Range
ZSITMDS1	12in	2kW	RD	24nm
ZSITMDS8	20in	2kW	RD	24nm
ZSITMDS9	24in	4kW	RD	36nm
ZSITMDS10	48in	4kW	OA	48nm

RD - Radome Antenna (enclosed)

OA - Open Array

STANDARD HORIZON CP500

12in Chartplotter

With a big, bold, 12in sunlight-viewable screen, the CP500 offers all the features of the CP300 with the addition of an alphanumeric keypad and radar compatibility.



KEY FEATURES

- 12in 800x600 pixel sunlight viewable TFT colour display
- Radar and AIS integration
- 5 NMEA outputs, 2 NMEA inputs, 2 video inputs for security cams, DVD etc
- VGA output for repeaters/second stations

SUPPLIED WITH

12 channel GPS, mounting bracket, flush mount kit

STANDARD HORIZON CP300 & CPF300

7in Widescreen Chartplotter and Chart Sounder

Available as a chartplotter or combination dual frequency chart sounder with a large, high resolution 800x480 pixel display and 6 customisable quick keys. An easy-to-follow menu page allows quick access to the various navigational screens, whilst all data windows are fully customisable. Working in conjunction with either C-Map MAX or NT+ cartridges, there is an amazing degree of information available.



KEY FEATURES

- External or internal 50-channel WAAS/EGNOS GPS antenna
- CP300 - colour chartplotter
- CPF300 - inbuilt 600W 50/200kHz fishfinder
- 2nm worldwide background map included
- Radar and AIS integration
- 3000 marks/waypoints, 50 routes
- 5 NMEA outputs, 2 NMEA inputs, video input
- VHF DSC position polling

SUPPLIED WITH

50 channel GPS, swivel mounting bracket, flush mount kit

ICOM VHF FOREIGN FLAG & PRIVATE CHANNEL PROGRAMMING VISIT OUR WEBSITE, PART NO. ZICOPPC

ICOM IC-M35

Buoyant Handheld VHF Radio

Imagine a radio that's smart enough to adjust its own volume level to account for the surrounding noise level. Icom's new IC-M35 buoyant VHF marine handheld radio does just that with its Clear Voice Boost technology. This measures the ambient sound pressure level so that during a sudden burst of noise the IC-M35 not only automatically adjusts the volume but also the transmit level as well so your conversation is sent and received as clearly as possible no matter how noisy the background is. The inbuilt noise cancelling microphone further enhances the audio quality.

KEY FEATURES

- 6W output power
- Buoyant and waterproof to IPX7
- Clear Voice Boost override button
- Lightweight Lithium-Ion battery
- Up to 8 hours use on a single charge
- Optional waterproof speaker microphone



SUPPLIED WITH

Li-Ion battery pack, charger, belt clip and lanyard



ICOM IC-M33

Buoyant Handheld VHF Radio

This revolutionary 5W floating radio is waterproof to IPX7 and has been designed to be easy to use. The ergonomic design of the case means it's easy to hold and use, even with gloved hands. As with all Icom handhelds, it features a large, easy to read backlit LCD and the 980mAh Li-Ion battery pack provides 9 hours of operating time. Another innovative feature is the "AquaQuake" draining function - a vibrating sound from the loudspeaker clears water away from the speaker grille.

KEY FEATURES

- Quick channel selection with Favourite channel function
- Dual/Tri-watch and Auto scan functions
- 4-step battery life indicator, 2-step power saver
- 70 programmable channels
- Optional HM-165 waterproof speaker-microphone
- Optional alkaline cell battery case

SUPPLIED WITH

980mAh Li-Ion battery pack, charger, belt clip and lanyard



ICOM IC-M71

Handheld VHF Radio

The IC-M71 sets the standard for handheld VHF radios in design, waterproofing and battery technology. The durable and rugged body is waterproof to IPX8 standard and it was the first VHF marine handheld to feature output power of 6 Watts. Its internal speaker uses a bridge-tied load (BTL) audio amplifier to increase the audio output and it delivers a loud 600mW audio output for clear sound, even in noisy environments. The AquaQuake function ejects water from the speaker grille with low frequency sound.

KEY FEATURES

- Standard high capacity 2000mAh Li-Ion battery pack - up to 16 hours operation
- 2-step power saver
- 70 programmable channels
- Voice scrambler version available
- Hands-free operation with optional headset
- Optional speaker mic



SUPPLIED WITH

2000mAh Li-Ion battery pack, "Smart" battery charger, belt clip, lanyard



ICOM IC-M87

Handheld VHF/PMR Radio

Tough, waterproof 22 channel PMR radio with large, backlit LCD and 5 Watts output power. Simple to operate, even when wearing gloves. Self check function monitors unit temperature and battery voltage.

KEY FEATURES

- Simple add/delete TAG scanning operation
- Automatic scan function
- 2 step power saver
- Key lock function
- Wide range of accessories including optional speaker mic and AA battery case

SUPPLIED WITH

Li-Ion battery pack, charger, belt clip and hand strap



Handheld VHF Radios & AIS

ICOM MA-500TR

Class B AIS Transponder

Designed for non-SOLAS vessels such as pleasure craft and fishing boats, the MA-500TR AIS transponder not only receives information from AIS vessels within range, it also transmits your vessel's information as well, so you will be seen by other vessels. It features a full dot-matrix display and visually shows real-time vessel traffic information.

The MA-500TR can operate as a stand alone unit or it can be connected via NMEA to a PC or compatible chartplotters, radars etc allowing AIS data to be overlaid in real time onto chart and radar displays. It can also be integrated with the Icom IC-M505 and IC-M603 fixed VHF radios which allows you to send DSC individual calls to a selected vessel instantly without the need to manually enter the vessel's MMSI number (requires firmware upgrade).



KEY FEATURES

- Dual channel receive capability
- 3 lines of NMEA0183 Input/Output
- IPX7 waterproof protection - 1 metre depth for 30 minutes
- Features collision-risk management functions including CPA (Closest Point of Approach), TCPA (Time to CPA), Target list and dangerous list and collision alarm
- External alarm connection

SUPPLIED WITH

Comes complete with the MXG-5000 GPS

ICOM MXA-5000

Dual Channel AIS Receiver

This black box dual channel AIS receiver allows boat owners to receive AIS info (both Class A and Class B signals) on two channels simultaneously and output the information onto compatible PCs, combi displays, chartplotters or radars, aiding navigation and collision avoidance.



KEY FEATURES

- Data input port for multiplexing GPS and AIS data
- AIS data output via NMEA0183
- Full Class A and B duplex receiver
- Inbuilt antenna splitter



We accept most major credit and debit cards



Fixed VHF/SSB Radios

**ICOM VHF FOREIGN FLAG & PRIVATE CHANNEL
PROGRAMMING VISIT OUR WEBSITE, PART NO. ZICOPPC**

ICOM IC-M505E

Fixed DSC VHF Radio

New all-in-one DSC VHF with large dot matrix LCD, rotary volume, squelch and channel select knobs and fisticmic. The IC-M505 is compatible with new HM-162 Commandmic enabling full function dual station control of its DSC functions, intercom and other remote functionality including foghorn and a loudhailer.

KEY FEATURES

- Advanced IPX8 waterproof protection
- Large backlit dot matrix LCD display
- Full function Class D DSC
- NMEA GPS input/output
- Dual / Tri Watch
- Fast Scan
- 25w hailer and auto fog horn facility

SUPPLIED WITH

Fisticmic, power cable



**HOT
PRODUCT**

ICOM IC-M603E

Fixed DSC VHF Radio

The IC-M603E is compatible with up to two HM-162 Commandmic's, allowing full remote control of all the built-in Class D DSC functions, as well as providing intercom capabilities and other remote functionality including foghorn and a loud hailer.



KEY FEATURES

- High resolution LCD with clear, easy to read characters.
- IPX7 Waterproof construction (1m depth for 30 minutes)
- Innovative AquaQuake draining function emits a vibrating sound to clear water away from the speaker grille
- Front and rear microphone connection
- Inbuilt 30 Watt 2-way hailer with listen back capability

SUPPLIED WITH

Fisticmic, power cable

ICOM HM-162 COMMANDMIC III

Full Function Remote Fisticmic

Handheld fisticmic with LCD display and multi jog dial giving full control of the IC-M505 and IC-M603 radios including DSC functions, intercom and other functions such as foghorn or loudhailer etc.

This allows the user to operate the transceiver from many areas of the vessel such as the deck or fly bridge with ease. The Commandmic fits in the palm of your hand comfortably and the multi jog dial enables easy and intuitive operation.

KEY FEATURES

- Large backlit dot matrix LCD display
- Distress Alert button on rear of unit
- Large 45mm speaker give loud, clear sound
- Compatible with IC-M505
- Waterproof to IPX8



ICOM IC-M801 & IC-M802

SSB Transceiver

Powerful SSB radio system which meets Class E (IC-M801E) and GMDSS Class A (IC-M801GMDSS) specifications and features inbuilt DSC facilities. The main transceiver unit can be installed out of sight, while operation is via a compact remote control panel with a large, easy to read display.

Two large bank and channel dials make channel selection fast and easy. 1355 ITU channels, up to 16 banks of user channels, 17 banks of ITU channels - each with up to 20 channels per bank Inbuilt modem for email and data services. NMEA in for GPS, RS-232C port for PC input. The remote control can be integrated with the IC-M601 or IC-M505 VHF radio to form a complete MF/HF/VHF communications station.



IC-M801E UK TYPE APPROVED!

KEY FEATURES

- Digital signal processor
- 125W (PEP) output
- VFO mode option
- Wide band receive coverage (0.5 – 29.9999MHz)
- Headphone jack, RS-232C/NMEA input, GPS input, printer output and D-SUB connector for NBDP/FSK terminal
- Available with telephone handset or fisticmic
- IC-M801GMDSS meets MED96/98/EC wheelmark requirements for SOLAS
- Icom M802 for non-UK vessels also available

ICOM IC-M411E

Fixed DSC VHF Radio

A compact waterproof VHF/DSC radio ideal for small boats or where space is at a premium. The large speaker grille gives excellent audio quality. The buttons and display are easy to see in poor lighting conditions. The Aquaquake draining function emits a buzzing sound which sheds any water that gets into the speaker system, ensuring sharp, clear audio even in the worst conditions.



KEY FEATURES

- Dual/Tri watch & multiple scan
- Up to 70 programmable channels
- Programmable channel comment
- External speaker connection
- 100 MMSI directory and up to 40 received DSC messages
- Low voltage indicator and 2-step power saver function

SUPPLIED WITH

Fisticmic, power cable

**HOT
PRODUCT**

Turn to the back page for pricing and ordering info NOW!

V-TRONIX ANTENNAS & FITTINGS

You've bought a new radio, but is your antenna past it? Remember - a poor antenna = poor performance!

YHK HAWK

**Stainless Steel Whip & Hawk
Wind Indicator**

- Low windage
- 20m cable
- Solderless connection
- PL259 plug



YWX WHIPFLEX

Stainless Steel Whip

- Low windage
- 20m cable
- Solderless connection
- PL259 plug



HA156C HELIFLEX

Stub Antenna

- Low windage for racing yachts
- Helical construction
- 20m cable
- PL259 plug
- No groundplane required



YRR RAIDER

RIB Antenna

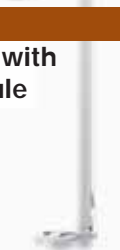
- Specially designed for rigid inflatable boats
- Short helical design to avoid snagging
- Solderless connection
- 8m cable
- PL259 plug



RV120-P

**1.5m GRP Antenna with
polycarbonate ferrule**

- Ideal for smaller power boats & workboats
- 6m cable
- PL259 plug
- Polycarbonate ferrule



RV120

**1.5m GRP Antenna with
stainless steel ferrule**

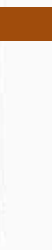
- Ideal for smaller power boats & workboats
- 6m cable
- PL259 plug
- Stainless steel ferrule



RV240

2.4m GRP Antenna

- Ideal for larger power boats & small ships
- Strong fibreglass tube
- 6m cable
- PL259 plug
- Stainless steel ferrule



ARMNT-P

Ratchet Mount, Nylon

- Four-way swivel mount
- Deck or side mount
- Quick release lever
- UV resistant
- Suitable for antennas less than 2.4m



ARMNT

Ratchet Mount, Stainless Steel

- Four-way swivel mount
- Deck or side mount
- Quick release lever
- UV resistant



ARMRM-S

Ratchet Rail Mount, Stainless Steel

- For 22mm & 25mm vertical/horizontal rails
- Quick release lever



ARMRM-P

Ratchet Rail Mount, Nylon

- For 22mm & 25mm vertical/horizontal rails
- Complete with rubber gasket
- Quick release lever



ARM-S

Economy Rail Mount, S/Steel

- For 22mm & 25mm round or square rails
- Vertical or horizontal fit
- Can be mounted on flat surfaces
- Complete with nylon adaptor



ARM-P

Fixed Rail Mount, Nylon

- For 22mm & 25mm rails
- Complete with adaptor, rubber gasket & hexagonal key
- Can also be mounted on flat surfaces
- Complete with nylon adaptors



ALDHM

Fixed Base Mount, Stainless Steel

- 100mm high, 75mm dia. base
- Ideal for fitting to radar arches
- Excellent for GPS & marine TV antennas



ALDHM-P

Flange Mount, Nylon

- 25mm high, 70mm dia. base
- Suitable for moderate duty operations



AA20

Active Antenna

- **Receive only**
- For Navtex, Weatherfax AM/SSB receivers etc
- 20m cable
- BNC plug
- Use with AAX1/AAX5



AAX1

Power Supply

- Use when DC power is not supplied by the receiver
- 10-30v DC
- 1m cable
- BNC jack



AAX5

Power Supply/Splitter

- Use when DC power is not supplied by the receiver
- Supply up to 5 receivers with one antenna
- 10-30v DC
- 1m cable
- BNC jack



WS200-P

Extension Loudspeaker

- Surface or flush mount
- Weatherproof, UV resistant
- Suitable for 4 or 8 ohm systems



ACC105

Deck Plug & Socket

- For RG58 cable
- With N-type connector, shroud & s/steel screws
- With 2 protection caps



ACC108

Through Deck Gland

- For RG58 cable
- Split seal gland
- Connector can be withdrawn through gland without cutting cable
- Complete with s/steel screws



390

7m HF/SSB Antenna

- 2 section with conductors
- Reinforced insulation allows input power up to 1Kw
- Side-feed termination band
- Base is 4.15m; top is 2.87m
- Chrome plated brass ferrules with 1"x14TPI base ferrule



410-R

HF/SSB Mounting Kit

- Heavy duty swivel mount with insulated bracket
- Adjustable for horizontal or vertical mounting
- Made from highly polished s/steel with 1"x14TPI thread
- Bracket inserts can accept antenna diameters from 25mm to 38mm



5300

8.6m HF/SSB Antenna

- 2 section with conductors
- Reinforced insulation allows input power up to 1Kw
- Side-feed termination band
- Base is 4.9m; top is 3.7m
- 61cm anodised aluminium base can be strapped directly to mast



Remember...

A radio is only as good as its antenna!

No matter how much you pay for a radio, its performance will be directly proportional to the quality and performance capabilities of the antenna. Don't compromise - insist on V-Tronix and Shakespeare!

Marine Electronics Mounts

Scanstrut offers a comprehensive range of installation solutions to maximise the performance on your marine electronics. All major antenna brands and models are catered for, with options for mounting radar, satcom, GPS, VHF and TV aerials and nav lights. For further product information visit www.scanstrut.com.

MAST PLATFORMS

Mast Mounts

For 2kW and 4kW radomes or 30cm and 40cm satcom antennas.

KEY FEATURES

- Attach to any mast with four swivel feet
- 12 point fixing using high quality monel rivets
- Easy & quick to install with all fastenings supplied
- **NEW** for 40cm satcom antennas and FLIR Navigator camera



SELF-LEVELLING RADAR MOUNT

Radar Mounts

For 2kW and 4kW radomes - ensures radar is level with horizon at all times, preventing target loss for best possible picture. Hydraulic damping eliminates minor oscillations. Single GPS / VHF accessory available

BACKSTAY MOUNTED

- Options to mount fore or aft of backstay, suitable for single and split backstays

MAST MOUNTED

- Weighs only 3.4kg, easy upgrade - same mounting footprint as M92722 and SC20

POLE MOUNTED

- Universal pole, can be deck or transom mounted
- Option to install satcom antennas above radar



POLE MOUNTS

SC100 Pole Mount

For 2kW & 4kW radomes and 30 & 40cm satcom antennas

KEY FEATURES

- **NEW** Carbon and Stainless Steel versions
- Universal adjustable base, fits angled decks and sloping transoms
- Supplied with two support modules, providing maximum fore/aft support
- Easily removed for racing or winter storage



ALSO AVAILABLE

SC2 Pole Mount for larger radomes, open array and satcoms

ACCESSORIES

Lifting Crane, Deck Flood Light, Light and GPS/VHF Antenna Mounts

SCANPOD

Instrument Mounting Pods

For mounting chartplotters, radar displays, instruments and autopilot controls, manufactured from acrylic capped ABS plastic in high gloss silver or white.

HELM PODS

- **NEW** System Pod - install displays and instruments in one mounting
- Universal fit to both 9.5in and 12in centre pedestal guards

FLEX-MOUNT SYSTEM

- Tilt display forward / back and side to side for best viewing angle
- Clamp onto existing rail or steering binnacle - install Helm Pod as normal



MAST PODS

- Universal mounting system fits a wide range of mast sizes (76 - 223mm)
- **NEW** Lightweight Carbon Mast Pod to fit 3 or 4 maxi instruments



DECK PODS

- Deck Pod models can be overhead mounted
- Quick release lever to alter the angle of the screen quickly
- Adjustable base allows a range of movement and multiple mounting angles

DECK SEAL

Waterproof Cable Routing

Provides waterproof cable routing with options for 16mm to 40mm connectors. All models have passed IPX6 and IPX7 waterproofing tests.

KEY FEATURES

- Aesthetic dome-shaped profile provides a stronger, impact-resistant design
- Split-seal option does not require connector removal during install
- Tapered bung forms watertight seal
- Supplied with both pre-drilled and blank inner seals
- Long life stainless fastenings with captive nuts
- Outer dome provides additional water shield
- Available in 30% Glass-filled Nylon or 316 stainless steel



NEW FOR 2010

POWERTOWER® RANGE

Antenna Mounts

POWERTOWER®

For 2kW & 4kW radomes and small satcom antenna.



EDITOR'S CHOICE

TYPE	PROFILE	HEIGHTS	FOOTPRINT	MATERIAL
COMPOSITE	30° aft lean	150 / 350mm	200mm²	Single piece composite moulding
STAINLESS	30° aft lean	150mm	150mm²	316 Stainless Steel
ALUMINIUM	25° fwd lean (radomes) 30° aft lean (open array)	130/ 250mm	180mm²	6082 aluminium, polyester powder coated

DUAL POWERTOWER®

For radomes or open-array antenna and 30cm, 40cm or 60cm satcom antennas

- Installs satcom antenna above the radar - eliminates antenna interference and ensures maximum performance
- Compact option available for 30cm satcom - lightweight mount and low profile, ideal installation for smaller boats



SATCOM POWERTOWER®

- For 30cm, 40cm and 60cm satcom antennas
- Raises antenna by 300mm for maximum performance
- Two models available - 30° aft leaning Stainless and vertical profile Aluminum

POWERTOWER® ACCESSORIES

Gantry Mount, Light GPS & VHF Antenna Mounts and 4° Base Wedge.

NEW - Powered or Unpowered Hinge System, lower electronics installation to reduce height for passing under bridges, winter storage, etc.

SATCOM ANTENNA MOUNTS

Satcom Dome Mounts

For 30cm, 40cm and 60cm satcom/tv antenna.

KEY FEATURES

- Reduce antenna footprint by up to 60%, providing greater choice of antenna position
- Adapter mount fixings hidden internally
- Watertight installation, watertight seal and gland systems

ACCESSORIES

Adjustable Base Wedge (provides level mounting platform for antenna)



Turn to the back page for pricing and ordering info NOW!



INTELLIAN

Satellite TV & Satellite Communication Systems

The advanced technology of Intellian's satellite antennas has long delivered the sharpest, most reliable satellite television reception at sea. In fact, Intellian's proven satellite television antenna systems can be found today on some of the finest yachts and vessels in more than 40 countries around the world.

Exclusive Intellian satellite TV antenna system features include patent-pending Wide Range Search (WRS) algorithm for faster signal acquisition, Advanced Dynamic Beam Tilting (DBT) for optimum signal stability in heavy seas, an innovative built-in GPS on Intellian i3, i4, i6 and i9 series which automatically uploads data and Auto Skew Angle Control System (i4P version only). The complete system includes Antenna, Radome and Antenna Control Unit (ACU) for simple installation and easy control.

For 2010, Intellian brings boaters a full line of high-performance satellite systems for a range of power and sailboats worldwide including Fleet Broadband communications systems, so now Intellian can fulfill all your Sat TV AND Satcom needs.

INTELLIAN i1

11in Satellite TV Antenna System

The Intellian i1 system has the world's smallest in-motion marine satellite TV antenna ever, perfect for small boats. It brings the boaters an affordable, yet luxurious entertainment system to access their favourite satellite TV channels freely whether in port or cruising coastal waters. Wide Range Search (WRS) and Dynamic Beam Tilting (DBT) technologies make fragile motion sensors unnecessary with the most precise tracking capability and superior satellite signal reception at high speed or in rough sea conditions. The more up-to-date design of the i1 has an intelligent, built-in TriSat module in its control unit that offers boaters satellite TV broadcasts automatically without any extra conversion boxes and wiring.

KEY FEATURES

- High quality antenna with 2-axis step motor
- Fully automated satellite search
- LHCP/RHCP or Horizontal/Vertical polarisation
- Superior dynamic tracking
- Fastest Wide Range Search (WRS) algorithm
- DVB signal identification
- Inbuilt NMEA 0183 GPS interface
- Easy satellite information change and update
- Easy antenna status check and automatic diagnosis
- Easy antenna control using PC interface
- Reliable power supply to the antenna
- Embedded TriSat function
- Easy installation - single cable from the ACU to the antenna



INTELLIAN i3

15in Satellite TV Antenna System

The Intellian i3 gives superior tracking performance and efficiency over systems of a similar size and is ideal for boats over 25ft whether cruising in coastal waters or offshore. The i3 offers the highest signal strength available - its innovations in Wide Range Search (WRS) and Dynamic Beam Tilting (DBT) technologies meaning there is no compromise in reception quality even in rough seas. Integrated smart HD and TriSat modules allow access to HDTV channels just like at home. Its single cable design between the antenna and the control unit means trouble-free installation and operation.

KEY FEATURES

- 15in antenna with 2-axis step motor
- Fully automated satellite search
- LHCP/RHCP or Horizontal/Vertical polarisation
- DVB signal identification
- Inbuilt GPS for fast satellite acquisition
- Inbuilt NMEA 0183 GPS interface
- Easy satellite change and update
- Antenna status check and automatic diagnosis
- Easy antenna control using PC interface



INTELLIAN i2

13in Satellite TV Antenna System

The Intellian i2 is the world's first high-performance and compact satellite TV system with integrated HD and TriSat modules. The i2 is an absolute choice for boats as small as 25ft with its small, simple and powerful designs. WRS and DBT technologies maintain the highest signal strength available for crystal-clear TV reception even in rough conditions. The new intelligent Antenna Control Unit (ACU) offers a complete turnkey solution designed for simplicity and ease. To enjoy as many as three different satellites, the ACU supports automatic satellite switching right from your remote control just like home.

KEY FEATURES

- High quality antenna with 2-axis step motor
- Fully automated satellite search
- LHCP/RHCP or Horizontal/Vertical polarisation
- Antenna weighs less than 10lbs (4.5kg)
- DVB signal identification
- Inbuilt GPS system for fast satellite acquisition
- Inbuilt NMEA 0183 GPS interface
- Easy satellite information change and update
- Antenna status check and automatic diagnosis
- Easy antenna control using PC interface
- Built-in MIM (Multi-satellite Interface Module)
- Up to six receivers can be connected to ACU directly
- Every receiver connected to ACU can be a master receiver which can change the satellite freely by TV remote control



INTELLIAN i4

18in Satellite TV Antenna System

With its rugged, reliable and durable design, the Intellian i4 provides outstanding performance while the vessels cruising at high speed or in rough sea conditions. The i4 offers all the features of the i3 system and is ideal for boats over 50ft.



We accept most major credit and debit cards



Satcoms

THRANE & THRANE SAILOR FLEETBROADBAND 250 & 500

Voice & Broadband Internet Access

Sailor FleetBroadband is the new benchmark for broadband Internet at sea and standard IP applications. Reliable high-speed IP communication is now available to all vessels, providing broadband data and voice simultaneously on the latest generation of Inmarsat satellites.

These unique solutions give you faster, more cost-effective access to data services than ever before. Simultaneously having access to voice and high-speed data services on a global basis will revolutionise data access on vessels. Sea chart information, online weather data, route planning and crew calling can all be undertaken at the same time.

KEY FEATURES

- IP connection for e-mail and internet/intranet access including secure VPN
- Streaming IP, guaranteed bandwidth
- ISDN (Sailor 500 FleetBroadband only)
- Sailor 250 - data up to 284Kbps
- Sailor 500 - data up to 432Kbps
- Voice and data simultaneously
- Compact hardware
- Sailor 250 dome 33cm diameter,
- Sailor 500 60.5cm diameter



THRANE & THRANE TT-3026D

Mini-C System

The world's first Inmarsat Mini-C system, comprising transceiver, antenna, and 12-channel GPS receiver in a single unit. The compact design and power conserving features make it very attractive for tracking and e-mail applications. It ensures fast and reliable transfer of vital information, e.g. position reporting, data monitoring, messaging, loading and unloading information, route planning, etc. It also features an advanced sleep mode function and includes a number of port options supporting interfacing requirements as well as six configurable I/O pins which can be connected to remote sensors, relays, or switches.

KEY FEATURES

- Extremely low power consumption
- Send and receive internet, e-mail, telex, Inmarsat-C, X-25, SMS (depending on applications)
- Optional message terminals available if no PC used
- Type approved for maritime applications
- Receives Enhanced Group Call (EGC) messages for SafetyNet and FleetNet



SUPPLIED WITH

EasyMail communication software for Windows

IRIDIUM 9555

Iridium Satellite Phone

The smallest and most powerful phone Iridium has ever made. Its compact, light and easy to use, featuring a brighter screen, a speaker phone, improved Short Messaging Service (SMS) and email capabilities and an upgraded mini-USB data port. The new phone is engineered to withstand and perform well in the world's most rugged, remote and industrial environment, including being water and shock-resistant. Combined with the only communications network offering truly global coverage, the 9555 delivers the reliable, secure, real-time, mission-critical communications service that Iridium users have come to expect.

KEY FEATURES

- 27% lighter and 30% smaller than the old 9505A handset
 - Retractable antenna for compact carrying
 - Illuminated, weather-resistant keypad redesigned for ease-of-use
 - Menu configurable in any of 21 languages
 - Additional address book fields for phone numbers, email addresses and notes
 - Programmable international codes for automatic dialling
 - Built-in help function
 - Integrated speakerphone
 - Mini-USB data port
- Standby time up to 30 hours, talk time up to 4 hours



SUPPLIED WITH

Battery, AC charger, DC car charger, holster, handsfree kit, external antenna

THURAYA SO-2510

Satellite Phone

The world's smallest satphone!

At only 130g, this lightweight pocket sized phone is designed to be highly portable and user friendly.

KEY FEATURES

- 1.5in 128x128 pixel display
- SMS, polyphonic ring tones
- Enhanced GPS Services
- Internal memory - up to 32Mb
- Connectivity - USB
- GmPRS equipped - up to 60kbps
- Fax and Data at 9.6kbps (Circuit Switched)
- Talk time up to 2.4 hrs



THURAYA SG-2520

Triband Smartphone

Satphone, GSM phone and GPS in one handset with a 177x200 pixel colour display and 1.3 megapixel camera with 5x digital zoom.

The SG-2520 is the only satellite tri-band phone in the market that allows operation on three different types of GSM networks: 900, 1800 and 1900MHz offering greater flexibility in high traffic GSM environments with increased phone usability and voice quality in Asia, Africa, Australia, Europe and North America.

KEY FEATURES

- World's smallest dual mode satellite phone
- Enhanced GPS Services
- Internal memory - up to 128Mb
- External memory - SD memory card
- GmPRS equipped - up to 85.6kbps (GSM), up to 60kbps satellite mode
- Fax and data at 9.6kbps (Circuit Switched)
- Talk time up to 2.4hrs (satellite) up to 4hrs (GSM)



IRIDIUM SAILOR SC4000

Fixed Iridium Satellite Phone

Suitable for any size of vessel, comprises transceiver, intelligent handset and small marinised antenna. Ideal for crew calling use with pre-paid scratch cards.



KEY FEATURES

- True global coverage - voice and data
- Data rate 9.6kps when compressed
- Rugged construction, lightweight waterproof antenna
- Flexible installation - up to 50m between handset and transceiver, up to 30m coax cable available
- RJ11 port for secondary analogue telephone

SUPPLIED WITH

Transceiver, antenna, handset. Antenna cable sold separately (10, 15, 20 & 30m sizes)

Turn to the back page for pricing and ordering info NOW!



KVH TRACPHONE FB150

Broadband Internet Access

Now, even small vessel owners can afford to have access to weather data, sea conditions, chart updates, as well as communication with family, friends, and the office when at sea! Low cost airtime packages and affordable hardware/airtime bundles.



NEW FOR 2010

KEY FEATURES

- Designed for the harsh marine environment
- Always-available 150 Kbps data connection with outstanding quality voice and text messaging
- Rugged, compact antenna is reliable, simple to install, and easy to integrate with your computer or phone network
- Global coverage via Inmarsat's I-4 satellite network

KVH TRACPHONE V7

Broadband Internet Access

The perfect solution if you're looking for data-only communications at broadband speeds. Consistent, high quality data connections, crystal clear multiple VoIP telephone lines and reasonable always-on, fixed price or per-Mb subscription plans.



KEY FEATURES

- Seamless regional roaming
- Ideal for heavy data use
- 85% smaller, 75% lighter than standard VSAT antennas, with dynamic, gyro-stabilised tracking
- Integrated WiFi and Ethernet hub
- Up to 512Kbps for ship-to-shore transmissions
- Up to 2Mbps for shore-to-ship downloads
- Military-grade modem for outstanding performance

KVH TRACPHONE FB250/FB500

Voice and Broadband Internet Access

The perfect solution for boat owners who want the same Internet speeds they enjoy at home, with "always on" broadband access to email, the internet and Virtual Private Networks (VPNs) as well as simultaneous, reliable telephone service at an affordable rate.



HOT PRODUCT

KEY FEATURES

- Fully automatic operation and dynamic stabilisation, even in the roughest seas
- No monthly fees, affordable pay-as-you-go service
- Convenient shipwide integration with PABX systems
- FB250 up to 284Kbps standard, 128Kbps streaming
- FB500 up to 432Kbps standard, 256Kbps streaming

KVH TRACVISION M2

"At Anchor" Satellite TV System

A great choice for those who want to watch Satellite TV while at anchor or at the dock, offering the highest signal strength available for "at-anchor" systems. The high-efficiency antenna features Ring

Fire™ technology, which offers reception and signal gain previously only available in 18in diameter systems! Enjoy KVH's award-winning quality and reliability at an affordable price thanks to this fully automatic system.



KEY FEATURES

- Ideal for use on boats as small as 25 feet
- Fully automatic satellite acquisition and satellite
- Ultra-quiet motors, no cable wrap, single-cable install, and exclusive, user-friendly onscreen system set-up and control
- Height 45cm, diameter 40cm

SUPPLIED WITH

Deluxe integrated 12V mobile receiver, backlit RF/IR remote control, 15m Antenna cable. Requires a digi-box or satellite decoder (eg Sky box)

HOT PRODUCT

KVH TRACVISION M3DX

Compact Satellite TV System

If you thought your boat was too small for satellite TV then think again! The world's smallest, fully stabilised mobile satellite television antenna system is ideal for boats as small as 25ft! The ultra-compact



KEY FEATURES

- Great offshore coverage (100-200 miles)
- Fast, powerful, ultra-quiet motors
- Fully automatic satellite acquisition
- Single LNB - simple single cable installation
- Voltage 9-16V DC, power consumption 50W
- Height 45cm, diameter 40cm

SUPPLIED WITH

Deluxe integrated 12V mobile receiver, backlit RF/IR remote control, 15m Antenna cable. Requires a digi-box or satellite decoder (eg Sky box)

KVH TRACVISION M5, M7 & M9

HDTV Satellite TV Systems

Enjoy HD programming from any leading provider with automatic satellite switching directly from the remote control! Unsurpassed High-Performance DVB® tracking.



KEY FEATURES

- **Tracvision M5** - 45cm system ideal for 40-60ft boats, weight 13.6Kg, power consumption 50W
- **Tracvision M7** - 60cm system ideal for 60-80ft boats, weight 25Kg, power consumption 55W
- **Tracvision M9** - 82cm system with integral Gyro/GPS and Remote Service Modem ideal for 80ft+ boats, weight 38.5Kg, power consumption 120W
- RingFire technology gives 30% greater reception and range than any other comparably sized system
- Superior offshore performance
- M5 & M7 - optional GyroTrac gyrocompass upgrade
- Supports multiple TVs and receivers

SUPPLIED WITH

Tri-Sat controller, remote service modem (M7/M9) Requires a digibox or satellite decoder (eg Sky box)

NAUTICOMP INFINITY II

15in & 19in LCD Displays

The new cost effective Infinity II has arrived! With highly efficient CCFL or LED backlight technology, it combines the best cutting edge technology with ease of use and a slim case design.

KEY FEATURES

- Sunlight viewable
- Waterproof to IP67
- Bonded glass - optically enhanced for clarity
- Deep dimming - 0 to 100%
- Superior image - scalable resolution up to SXGA
- Extended temperature range
- DVI, VGA and composite (optional) inputs
- Picture in Picture - designed to display all inputs (requires composite input)

NEW FOR 2010



NAUTICOMP INFINITY PRO

15in & 19in LCD Displays

With the smallest chassis frame and user friendly controls, all functions are easily accessed via the compact external keypad allowing the user to quickly and easily switch between inputs, and even switch between auto or manual input selection. Up to 3 inputs per screen.

KEY FEATURES

- Sunlight viewable
- Waterproof to IP67
- Bonded glass - optically enhanced for clarity
- Deep dimming - 0 to 100%
- Extended temperature range
- Superior image - scalable resolution up to SXGA
- DVI, VGA and composite (optional) inputs
- Picture in Picture - designed to display all inputs (requires composite input)

NEW FOR 2010



We accept most major credit and debit cards





WHY NO PRICES?

People often ask why we don't print prices in our Buyer's Guide, the reason is simple -

- The Buyer's Guide comes out once a year, but prices change daily.
- At any one time there will be a number of special offers or mega deals on particular items.
- Some of our suppliers don't like us advertising low prices as it upsets the other dealers who don't have our volume and can't compete!

If you want to find out our latest prices why not visit our online store www.mesltd.co.uk where you can shop securely online, 24hrs a day. Getting an account is easy and free of charge - simply visit our site, register and you can immediately benefit from our megadeals, bundle package specials and other great offers - it even remembers what you've put in your basket for when you return next time!

If you wish we can also provide you with our complete price list as PDF file on request -

- **email us** on sales@mesltd.co.uk,
- **call us** on 01179 114111 or
- **fax us** on 01179 556289



PAYMENT

We accept the following methods of payment - cash, cheque and most credit and debit cards -



- MES will not charge your credit/debit card until the goods are shipped unless it is a highly specialised item, in which case we may ask for a small deposit at the time of order.
- MES also accept Euro and US Dollar payments and bank transfers.



EXPERT INSTALLATION & SUPPORT

Whilst all of the products we offer come with detailed installation instructions, you can't beat the performance you will get from a professional installation. Ocean Install - a sister company of MES - provides specialist marine electronics design, consultancy, installation and service.

- With installation bases in Southampton, Poole, Bristol, London, Falmouth, Palma and Antibes, we offer a pan European service at extremely competitive prices. Our team of highly trained technicians offer an unrivalled degree of quality, know-how and craftsmanship.
- Ocean Install's services start at the outset of any project. Our design and consultancy division will put together a detailed electronic system design - ideal for large scale projects where equipment is to be installed by 3rd parties or by a boat builder.
- Our unique **Kre-8!** design solution gives you a single document to allow a sophisticated electrical and electronics system to be implemented in a cost effective manner - and to deliver the required technology effectively. The **Kre-8!** package can include kitting and tendering lists allowing you to shop for the best value solution.
- Our engineers are all factory trained electronic technicians as well as having intimate knowledge of boats. This winning combination of knowledge and practical experience means you'll get a truly professional installation and get the most out of your equipment. Whether it is a simple radar system or a complex computer network, we'll be happy to offer a competitive quote.
- If you prefer to fit yourself, then you may like to take advantage of our commissioning service - our team will pick up where you leave off, carrying out final connections and setting up the system. You may also be able to take advantage of extended warranty options where we commission the equipment.
- Service - we also offer on board and bench service repair for electronic equipment.
- Support & Training - a few hours spent on professional training can really reap rewards in terms of product operation and usability. Ocean Install has a team of people happy to offer friendly and easy to understand product training and help you get the best out of your system.
- Sophisticated products need sophisticated and specialist support. We're here to provide the support you need by phone, fax and e-mail. The fastest route to a support solution is to e-mail our team of technicians at tellmehow@oceaninstall.com with your customer reference number and details of your query and we'll have you up and running in no time.
- We offer a range of extended warranty packages with onboard and world wide support



PROFESSIONAL TRAINING

With loads of extra functionality and a whole host of new features built into the latest electronic products, it makes sense to get up to speed on your system and get professional training.

Our training facility at our Bristol office runs a series of short, 1 day intensive courses on some of the most popular systems we sell. They aim to provide you with the techniques to get the best from your system and can also cover installation and interfacing for DIY installers.

Courses are endorsed by the manufacturers and are designed around small user groups to get the best possible knowledge transfer. Book today by calling 01179 114111 or email sales@mesltd.co.uk



UK Head Office -
Marine Electronic Services Ltd
 Marine House
 Unit 10, City Business Park
 Easton Road
 Bristol BS5 0SP
 Tel 01179 114111
 Fax: 01179 556289
 Email: sales@mesltd.co.uk
 Web www.mesltd.co.uk



Poole Sales Office -
 Unit 2
 Vitrage Technical Park
 Nuffield Industrial Estate
 Witney Rd
 Poole BH17 0GL
 Tel 01202 666066

Please call for European offices

HUMMINBIRD 800 & 900 SERIES

New 7 & 8in widescreen colour combi chartplotter/fishfinders



UNMISSABLE DEAL!

This superb black box 15in TOUCHSCREEN combi display was £6500, you can get it from us for only £1500!*

PAGE 26



* While stocks last

NEW MARINE PCs

DigitalYacht's powerful new Aqua range of PCs are designed for onboard use



©2010 Marine Electronic Services Ltd

Created by  Avalyn Design avalyn.co.uk

01179 114111 • www.mesltd.co.uk