

*CLIPPER*

**SPEED AND  
DISTANCE LOG  
REPEATER**

## INTRODUCTION

Clipper Log Repeater units are supplied with a standard mounting kit. They are also supplied with an attached 5-metre lead which plugs into the rear socket on the master unit. They require no other connections, because they get their power and signals from the master unit, which are in turn powered by the vessel's power supply. Clipper Log Repeater units work only with a Clipper Log Master Unit.

## PRE-TEST OF INSTRUMENT

Before mounting the repeater unit, check that the instrument is complete and undamaged. Plug the lead from the repeater into the back of the master unit and apply 12 volts. Confirm that a reading is shown on both the displays.

## INSTALLING THE REPEATER UNIT

Select a convenient position for the repeater on a panel or bulk-head. The site must be flat and the cavity behind the panel must remain dry at all times. (The cable entry is deliberately not sealed to ensure adequate ventilation. This prevents misting of the display).

Cut a hole in the panel 67mm high and 87mm wide. Pass the attached cable through the hole ready for routing to the master unit.

Unscrew and remove the two wing nuts from the rear of the instrument and remove the stainless steel clamping bracket. Fit the "O" ring seal into the groove in the panel mounting face of the instrument. Ensure that it is correctly lying in its groove before fitting the instrument to the panel, which provides the watertight seal for the display.

Fit the instrument into the panel, fit the stainless clamp over the studs, fit and tighten the two wing nuts finger tight only.

It is important that the O-ring rubber seal makes good contact with the panel to prevent water getting behind the unit and entering the cavity behind the panel.

It is good practice to run the cables vertically downwards from the unit, even if they later have to rise to connect to the master unit. Doing so prevents any water that might get onto the cables from running back along the cables and into the unit.

## GETTING STARTED

When the Clipper Log is first turned on with the Repeater connected, it automatically performs a number of self-test processes, and after a brief delay switches on the backlight illumination at the factory pre-set level. The Repeater then displays the word "On" until it acquires data from the master unit.

Under normal circumstances, the display then almost immediately shows the same readings as the master unit, beginning with the Total distance and then the master's selected readings. Under all normal circumstances, the Repeater shows the same as the master unit, using the same values for speed and distance.

If Engineering is being done on the master unit, the repeater displays the progress. No Engineering settings are available on the Log Repeater.

## **CHANGING THE BACKLIGHT SETTING**

Backlighting is provided to allow the unit to be seen at night. In the same way as for the master units, the backlit area is restricted in the top corners of the display to concentrate the lighting in the areas of interest. The brightness of the backlighting can be adjusted at any time independently of the backlight setting of the master unit. The brightness is adjusted by pressing the ILLUM button. Each press of the button increases the brightness by one in the range 0 to 7, shown by the backlight indicator in the bottom left of the Repeater display.

A setting of zero switches the backlighting off, and a setting of 7 is maximum. In common with the other settings in the unit, the backlight setting is stored even when the unit is off, so that it returns to the chosen setting whenever the unit is powered up again.

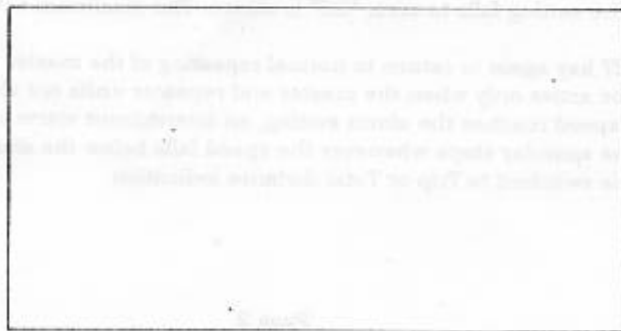
## **SETTING A SPEED ALARM**

At any time during normal operation of the unit, if the speed (or Trip or Total distance, or Trip) is being displayed, it is a simple matter to set a speed alarm. When the vessel's speed reaches or exceeds the selected speed

Press the SET key to enter speed alarm setting mode. The present setting is shown. If no alarm is set, the word "OFF" is displayed. If a value is shown, it is the present speed at which it will sound. Press INC to increase the setting, and DEC to decrease it. Keeping either key pressed continues to increase or decrease the setting until it is released. If the setting falls to zero, "OFF" is shown. The maximum setting is 99.9

Press the SET key again to return to normal repeating of the master unit's displays. Alarms will be active only when the master and repeater units are showing speed. If the vessel's speed reaches the alarm setting, an intermittent alarm sounder is activated. The sounder stops whenever the speed falls below the alarm setting, or the Master unit is switched to Trip or Total distance indication.

DESIGNED AND  
MANUFACTURED  
IN ENGLAND



© FRANK EVEREST